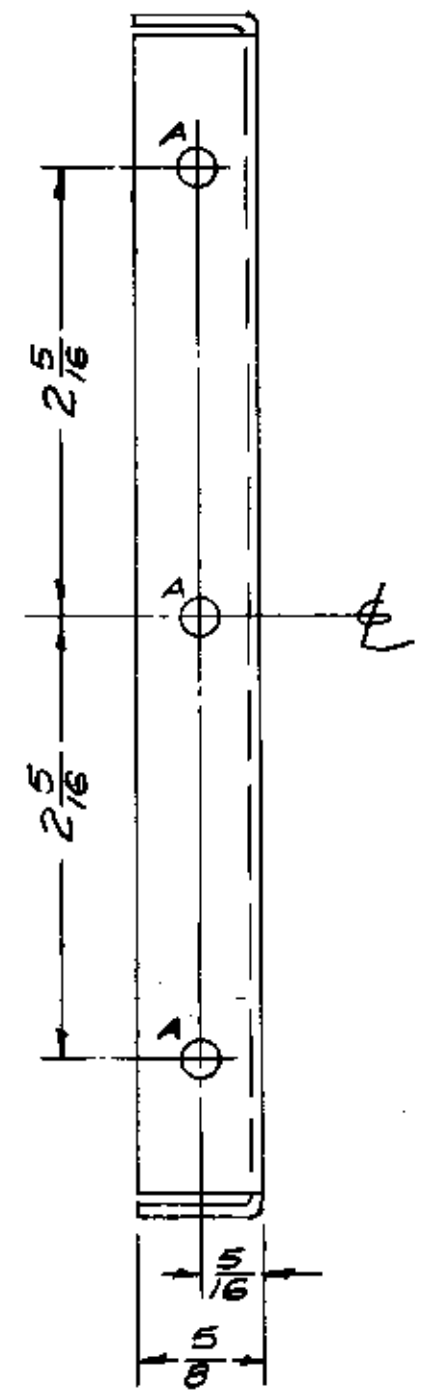
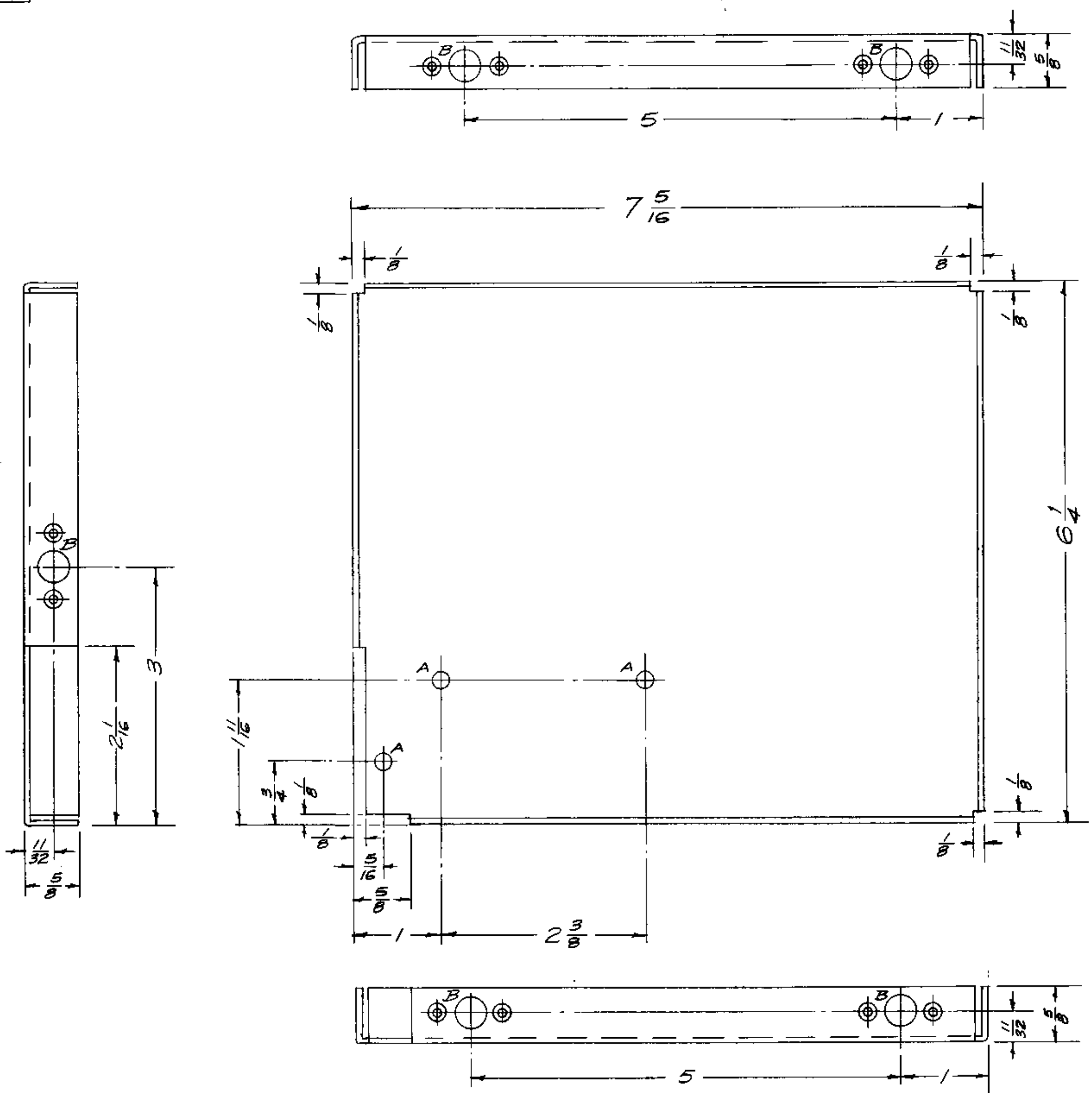
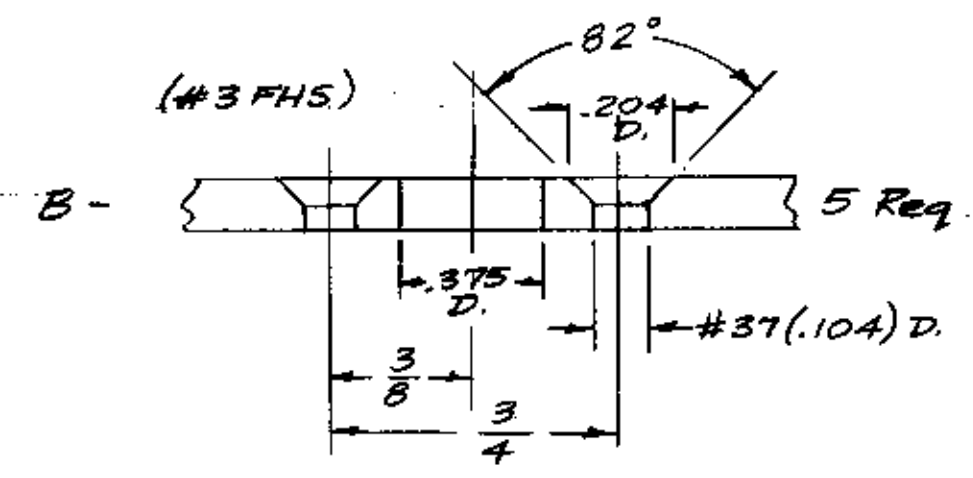


IF IT IS FOUND DESIRABLE TO CHANGE ANY TOLERANCE OR OTHER DETAIL SPECIFIED ON THIS DRAWING NOTIFY THE PURCHASER PROMPTLY.
 MAXIMUM ALLOWABLE TOLERANCES HAVE BEEN DETERMINED AND DEVIATIONS WILL BE CAUSE FOR REJECTION. REMOVE ALL BURRS AND SHARP EDGES

A- $1\frac{3}{64}$ (.203) D. 6 Req.



MS-1190 B

NOTICE TO PERSONS RECEIVING THIS DRAWING

THE TECHNICAL MATERIEL CORPORATION claims proprietary right in the material disclosed hereon. This drawing is issued in confidence for engineering information only and may not be reproduced or used to manufacture anything shown hereon without permission from THE TECHNICAL MATERIEL CORPORATION to the user. This drawing is loaned for mutual assistance and is subject to recall at any time.

Property of:
 THE TECHNICAL MATERIEL CORPORATION
 MAMARONECK, NEW YORK

B	1	CLERICAL CHANGE	14.65	-	EMN	
A	1	5408 - IRIDITE WAS 3107 - CAUSTIC PID	12-8-59	1001	EMN	
ISSUE	ITEM	CHANGED FROM	DATE	CH. NO.	DRAFTER	CHK. APP.
TOLERANCES		SCALE: FULL				
ALL OTHERS	DEC. DIM. \pm	DRILL PUNCH, COMMERCIAL STOCK				
	FRAC. DIM. \pm 1/64	SIZES AND MANUFACTURERS				
	ANGULAR DIM. \pm	TOLERANCES ARE NOT INCLUDED.				

1	SWR-10K-RM			12/10/64
1	ATS-MCU-2			7-8-59
1	SWR-3000RM			5-19-58
1	ATS-MCU			2-4-58
REQ. PER UNIT	MODEL	PROJECT NO.	ASBY. NO.	DATE
				USED ON

REQ. ITEM	PART NO.	DESCRIPTION	SYMBOL
	.064 THK.	THE TECHNICAL MATERIEL CORP.	
	STOCK SIZE	MAMARONECK, NEW YORK	
ALUMINUM	4	PLATE, SIDE, RIGHT	
MATERIAL	WEIGHT PER PC.		
	5052-H32		
	TYPE & TEMPER	64/100	REB
	DRAWN	JMD	MECH. DES. APP.
	CHECKED		FINAL APPROVAL
	HEAT TREAT. SPEC.		
	FINISH & SPEC. NO.		
			MS-1190 B