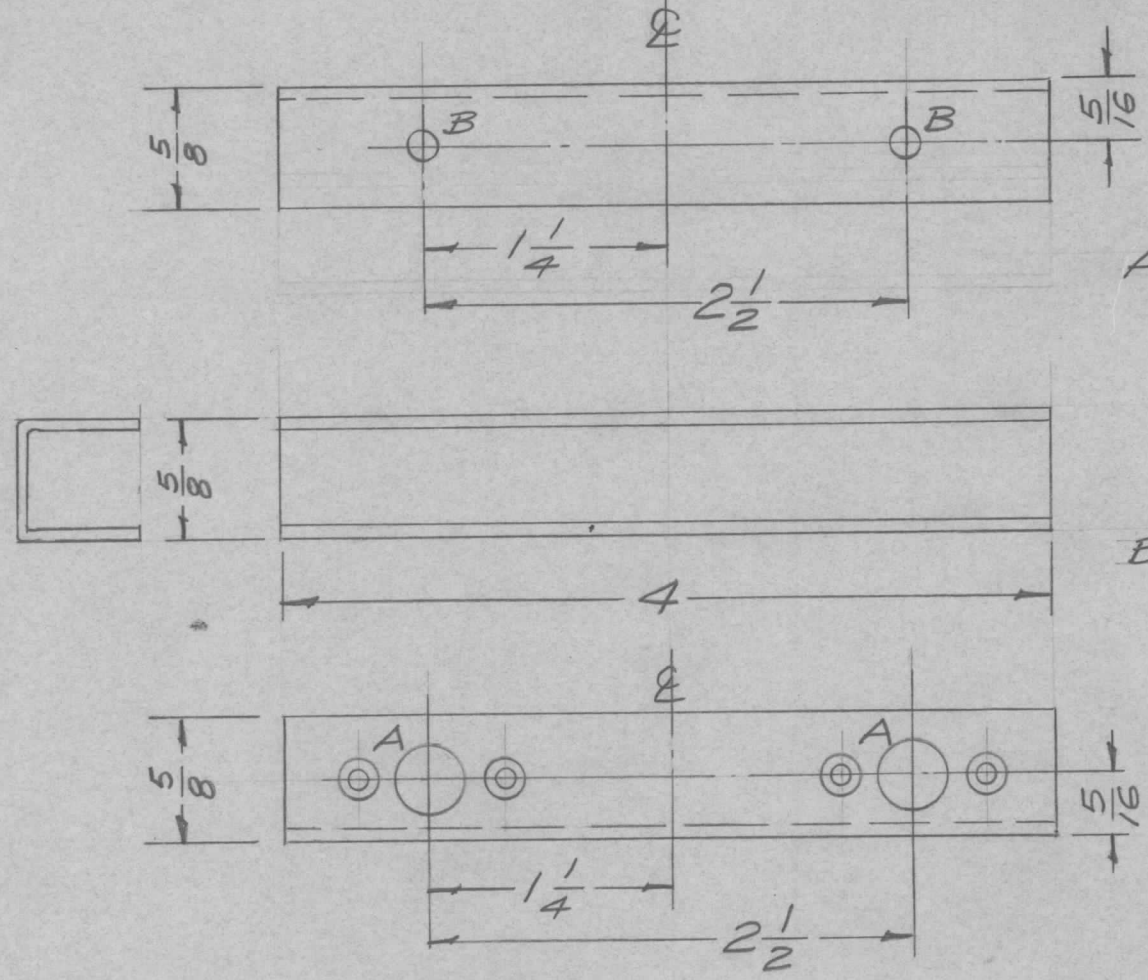


| REQ. PER UNIT | USED ON | | |
|---------------|----------|------------|---------|
| | MODEL | ASS'Y. NO. | DATE |
| 1 | ATS-50TU | | 2-24-58 |
| 1 | ATS-70TU | | 2-24-58 |

MS-1161 A



A - 2 Req. -
 #37 (.104) D. Dr.
 .204 D.
 82°
 .375 D.
 3/8
 3/4
 B - 1/64 (.171) Diam. 2 Req.

| ISSUE | ITEM | CHANGED FROM | DATE | CH. NO. | DRAFTS | CHECKER | ENG. APP. | REQ. ITEM | PART NO. | DESCRIPTION | SYMBOL | |
|--|------|--|------------|---------|--------|---------|-----------|---|-------------------|--|----------------------------------|----------------|
| | | | | | | | | | .064 Thk. | THE TECHNICAL MATERIEL CORP. MAMARONECK, NEW YORK | BRACKET, MTG, DESICCANT COVER | |
| | | | | | | | | | Aluminum | | | |
| A | 1 | 5404 - IRIDITE WAS 5101 - CAUSTIC DIP | 12-8 59 | 1001 | P | | EMN | | | | | |
| TOLERANCES | | | | | | | | SCALE: FULL | | | | |
| DEC. DIM. ± FRAC. DIM. ± 1/64 ANGULAR DIM. ± | | | | | | | | MAXIMUM ALLOWABLE TOLERANCES HAVE BEEN DETERMINED AND ANY DEVIATIONS WILL BE CAUSE FOR REJECTION. REMOVE ALL BURRS AND SHARP EDGES | | | | |
| | | | | | | | | 5052-H32 | 16 2/24/58 | JAW | JBR | |
| | | | | | | | | TYPE & TEMPER | HEAT TREAT. SPEC. | DRAWN | CHECKED | FINAL APPROVAL |
| | | | | | | | | 5404-IRIDITE | | | | MS-1161 A |
| | | | | | | | | FINISH & SPEC. NO. | ELEC. DES. APP. | MECH. DES. APP. | | |