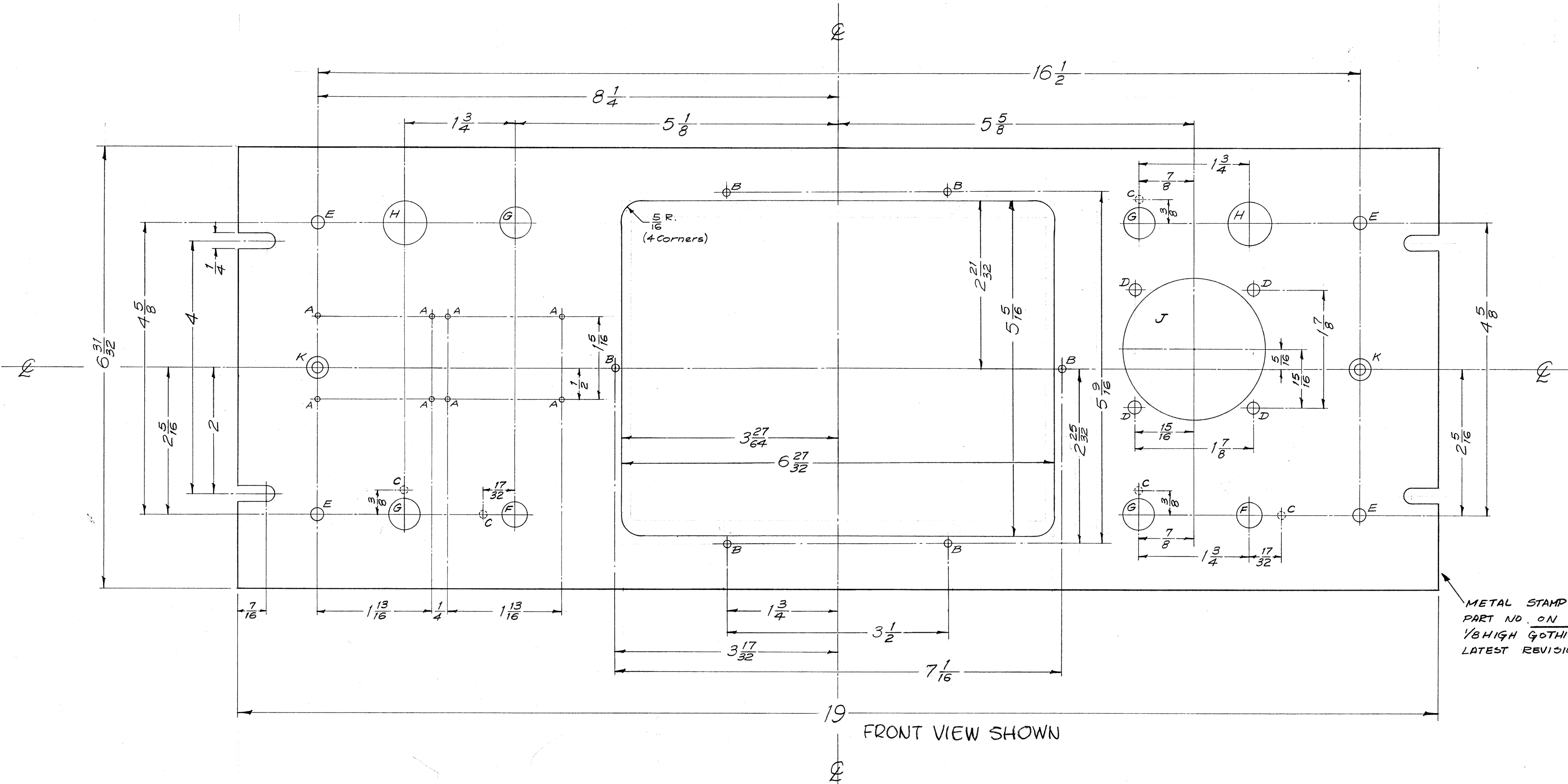


IF IT IS FOUND DESIRABLE TO CHANGE ANY TOLERANCE OR OTHER DETAIL, SPECIFIED ON THIS DRAWING NOTIFY THE PURCHASER PROMPTLY.  
 MAXIMUM ALLOWABLE TOLERANCES HAVE BEEN DETERMINED AND DEVIATIONS WILL BE CAUSE FOR REJECTION. REMOVE ALL BURRS AND SHARP EDGES

NOTICE TO PERSONS RECEIVING THIS DRAWING  
 THE TECHNICAL MATERIEL CORPORATION claims proprietary right in the material disclosed herein. This drawing is issued in confidence for engineering information only and may not be reproduced or used to manufacture anything shown herein without permission from THE TECHNICAL MATERIEL CORPORATION to the user. This drawing is loaned for mutual assistance and is subject to recall at any time.  
 Property of:  
 THE TECHNICAL MATERIEL CORPORATION  
 MAMARONECK, NEW YORK

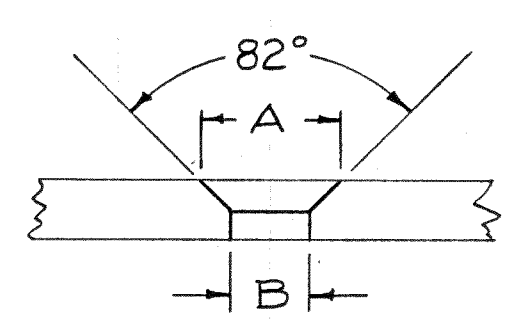


METAL STAMP THE PART NO. ON REAR 1/8 HIGH GOTHIC, WITH LATEST REVISION LETTER

FRONT VIEW SHOWN

- A — No. 47 Drill (.078) Diam. 8 Req.
- B — 1/8 (.125) Diam. 6 Req.
- C — 1/8 (.125) Diam. X 1/8 Deep Drill from Rear 5 Req.
- D — 3/16 (.187) Diam. 4 Req.
- E — 13/64 (.203) Diam. 4 Req.
- F — 13/32 (.406) Diam. 2 Req.
- G — 1/2 (.500) Diam. 4 Req.
- H — 1/16 (.687) Diam. 2 Req.
- J — 2.220 Diam 1 Req.
- K — Drill & C'sink. for 8-32 FHS. 2 Req. See Detail at right

DIM.	8-32 FHS
A	.337
B	#18 (.169)



FINISH-  
 S404 YELLOW IRIDITE  
 S114 Zinc Chromate Primer } Front & Edges Only  
 S115 Smooth Grey Enamel }  
 (or Prime & Paint to Cust. Spec.)

Ref- LD-372 (8) Engraving

D	2	1	1	1	2-1-45	1338	1001	1001	1001	1001	1001	1001	1001	1001	1001	1001	1001	1001	1001
C	1	1	1	1	12/49	1001	1001	1001	1001	1001	1001	1001	1001	1001	1001	1001	1001	1001	1001
B	1	1	1	1	4/58	2	16	16	16	16	16	16	16	16	16	16	16	16	16
A	1	1	1	1	7/58	1	16	16	16	16	16	16	16	16	16	16	16	16	16

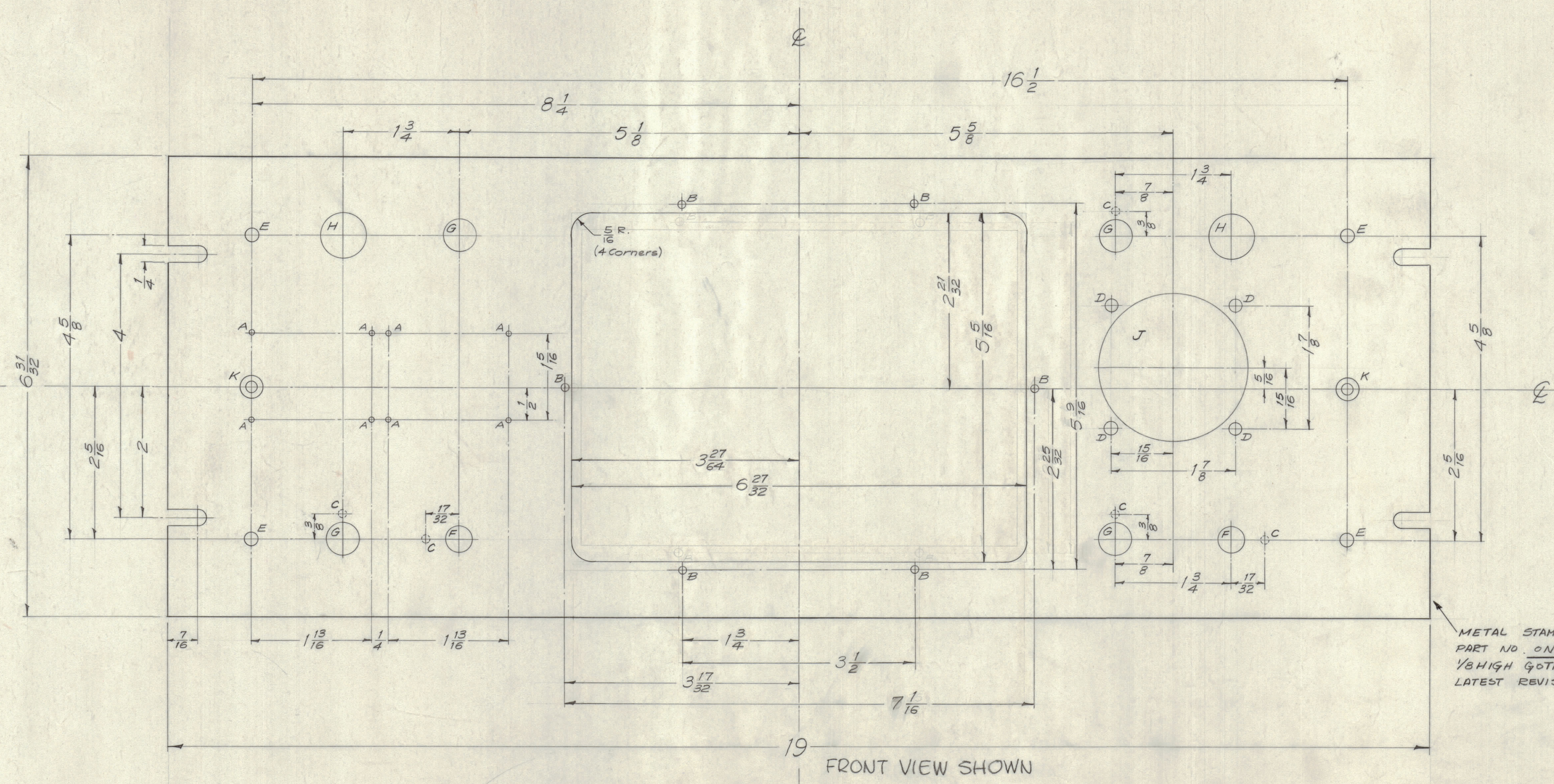
REQ. ITEM	PART NO.	DESCRIPTION	SYMBOL
3/16 THK.		THE TECHNICAL MATERIEL CORP. MAMARONECK, NEW YORK	
Aluminum	N	FRONT PANEL,	
MATERIAL	WEIGHT PER C.	AT5-MCU	
2024-T3			
TYPE & TEMPER	161-31-58	MECH. DES. APP.	
N		MECH. DES. APP.	
HEAT TREAT. SPEC.		MECH. DES. APP.	
SEE NOTE		MECH. DES. APP.	
FINISH & SPEC. NO.		MECH. DES. APP.	

1	AT5-MCU	PROJECT NO.	ABBY. NO.	1-31-58	DATE
REQ. PER UNIT	MODEL	PROJECT NO.	ABBY. NO.	DATE	USED ON

MS-1159 D

IF IT IS FOUND DESIRABLE TO CHANGE ANY TOLERANCE OR OTHER DETAIL SPECIFIED ON THIS DRAWING NOTIFY THE PURCHASER PROMPTLY.  
 MAXIMUM ALLOWABLE TOLERANCES HAVE BEEN DETERMINED AND DEVIATIONS WILL BE CAUSE FOR REJECTION. REMOVE ALL BURRS AND SHARP EDGES.

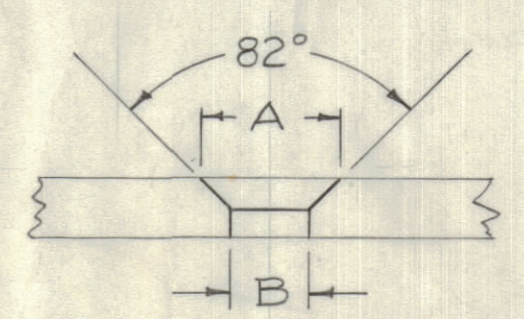
NOTICE TO PERSONS RECEIVING THIS DRAWING  
 THE TECHNICAL MATERIEL CORPORATION claims proprietary right in the material disclosed herein. This drawing is issued in confidence for engineering information only and may not be reproduced or used to manufacture anything shown herein without permission from THE TECHNICAL MATERIEL CORPORATION to the user. This drawing is loaned for mutual assistance and is subject to recall at any time.  
 Property of:  
 THE TECHNICAL MATERIEL CORPORATION  
 MAMARONECK, NEW YORK



METAL STAMP THE PART NO. ON REAR 1/8 HIGH GOTHIC, WITH LATEST REVISION LETTER

- A—No. 47 Drill (.078) Diam. 8 Req.
- B—1/8 (.125) Diam. 6 Req.
- C—1/8 (.125) Diam. X 1/8 Deep 5 Req.  
Drill from Rear
- D—3/16 (.187) Diam. 4 Req.
- E—13/64 (.203) Diam. 4 Req.
- F—13/32 (.406) Diam. 2 Req.
- G—1/2 (.500) Diam. 4 Req.
- H—1/16 (.687) Diam. 2 Req.
- J—2.220 Diam. 1 Req.
- K—Drill & Sink for 8-32 F.H.S. 2 Req.  
See Detail at right

DIM.	8-32 F.H.S.
A	.337
B	#18 (.169)



FINISH—  
 S404 YELLOW IRIDITE  
 S114 Zinc Chromate Primer } Front & Edges Only  
 S115 Smooth Grey Enamel }  
 (or Prime & Paint to Cust. Spec.)

Ref- LD-372 (8) Engraving

D	1	IF HOLE WAS 2 1/4 DIA METAL STAMPING ADDED	2-1-45	1338				
C	1	S-404 YEL. IRIDITE WAS	1/1/59	1001				
B	1	S-101 CAUSTIC DIP CENTERS CUTOUT CORNER RADIUS ADDED (5/16 R)	4/1/58	2	16			
A	1	CENTER METER MTS. CUT-OUT & ASSOCIATED MTS. HOLES CHANGED	7/3/58	1	16			

ISSUE	ITEM	CHANGED FROM	DATE	CN. NO.	DRAFTS	CHECKER	ENG. APP.
TOLERANCES		SCALE: FULL					
ALL OTHERS	DEC. DIM. ±	DRILL, PUNCH, COMMERCIAL STOCK SIZES AND MANUFACTURERS TOLERANCES ARE NOT INCLUDED.					
	FRAC. DIM. ± 1/64						
	ANGULAR DIM. ±						

1	ATS-MCU	PROJECT NO.	ASS'Y. NO.	DATE
REQ PER UNIT	MODEL			
USED ON				

REQ. ITEM	PART NO.	DESCRIPTION	SYMBOL
	3/16 THK.	THE TECHNICAL MATERIEL CORP. MAMARONECK, NEW YORK	
STOCK SIZE		FRONT PANEL,	
MATERIAL	WEIGHT PER FC.	ATS-MCU	
2024-T3			
TYPE & TEMPER	161-31-58		
	DRAWN	ELEC. DES. APP.	MECH. DES. APP.
		H. J. J.	
HEAT TREAT. SPEC.	CHECKED	FINAL APPROVAL	
FINISH & SPEC. NO.			MS-1159 D

MS-1159 D