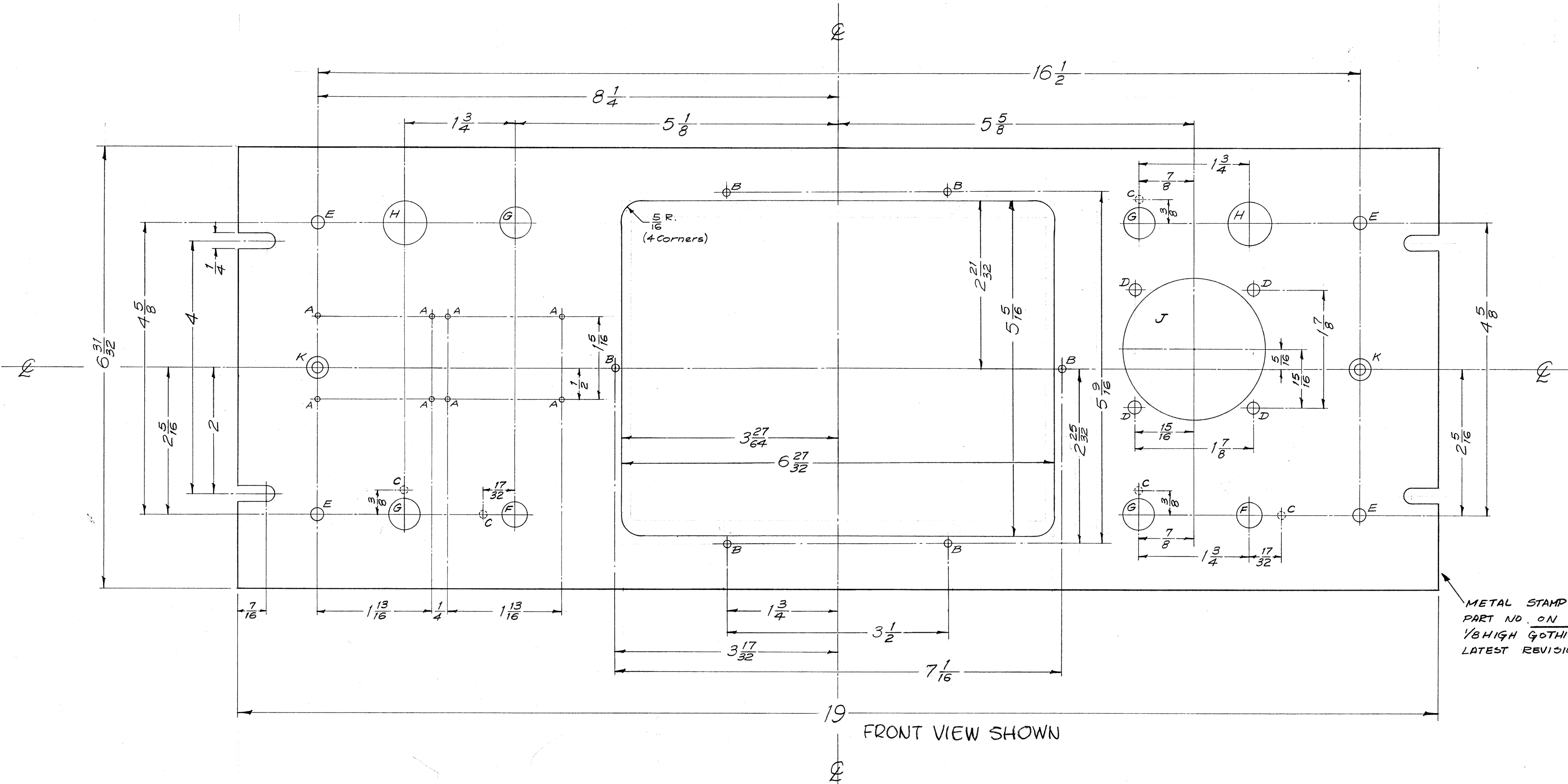


IF IT IS FOUND DESIRABLE TO CHANGE ANY TOLERANCE OR OTHER DETAIL, SPECIFIED ON THIS DRAWING NOTIFY THE PURCHASER PROMPTLY.
 MAXIMUM ALLOWABLE TOLERANCES HAVE BEEN DETERMINED AND DEVIATIONS WILL BE CAUSE FOR REJECTION. REMOVE ALL BURRS AND SHARP EDGES

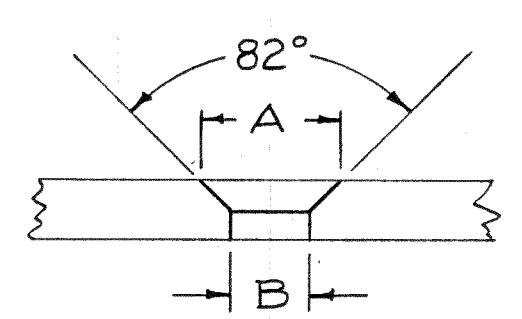
NOTICE TO PERSONS RECEIVING THIS DRAWING
 THE TECHNICAL MATERIEL CORPORATION claims proprietary right in the material disclosed herein. This drawing is issued in confidence for engineering information only and may not be reproduced or used to manufacture anything shown herein without permission from THE TECHNICAL MATERIEL CORPORATION to the user. This drawing is loaned for mutual assistance and is subject to recall at any time.
 Property of:
 THE TECHNICAL MATERIEL CORPORATION
 MAMARONECK, NEW YORK



METAL STAMP THE PART NO. ON REAR 1/8 HIGH GOTHIC, WITH LATEST REVISION LETTER

- A — No. 47 Drill (.078) Diam. 8 Req.
- B — 1/8 (.125) Diam. 6 Req.
- C — 1/8 (.125) Diam. X 1/8 Deep Drill from Rear 5 Req.
- D — 3/16 (.187) Diam. 4 Req.
- E — 13/64 (.203) Diam. 4 Req.
- F — 13/32 (.406) Diam. 2 Req.
- G — 1/2 (.500) Diam. 4 Req.
- H — 1/16 (.687) Diam. 2 Req.
- J — 2.220 Diam 1 Req.
- K — Drill & C'sink. for 8-32 FHS. 2 Req. See Detail at right

DIM.	8-32 FHS
A	.337
B	#18 (.169)



FINISH-
 S404 YELLOW IRIDITE
 S114 Zinc Chromate Primer } Front & Edges Only
 S115 Smooth Grey Enamel }
 (or Prime & Paint to Cust. Spec.)

Ref- LD-372 (8) Engraving

REQ. ITEM	PART NO.	DESCRIPTION	SYMBOL
1	AT5-MCU	FRONT PANEL	D

REQ. PER UNIT	MODEL	PROJECT NO.	ASBY. NO.	DATE	FINISH & SPEC. NO.
1	AT5-MCU			1-31-58	SEE NOTE

REQ. ITEM	PART NO.	DESCRIPTION	SYMBOL
1	AT5-MCU	FRONT PANEL	D

ISSUE ITEM	CHANGED FROM	DATE	CN. NO.	DRAFTS	CHECKER	ENG. APP.
D	2 HOLE WAS 2 1/4 DIA METAL STAMPING ADDED	2-1-45	1338			
C	S-404 YEL. IRIDITE WAS S-101 CAUSTIC DIP	12/4/57	1001			
B	CENTER CUTOUT CORNER RADII ADDED (R. 1/16)	4/1/58	2			
A	CENTER HOLE MTS. CUT-OUT & ASSOCIATED MTS. HOLES CHANGED	7/3/58	1			

ALL DEC. DIM. ± 1/64	SCALE: FULL
OTHERS ANGULAR DIM. ±	DRILL, PUNCH, COMMERCIAL STOCK SIZES AND MANUFACTURERS TOLERANCES ARE NOT INCLUDED.

MS-1159 D