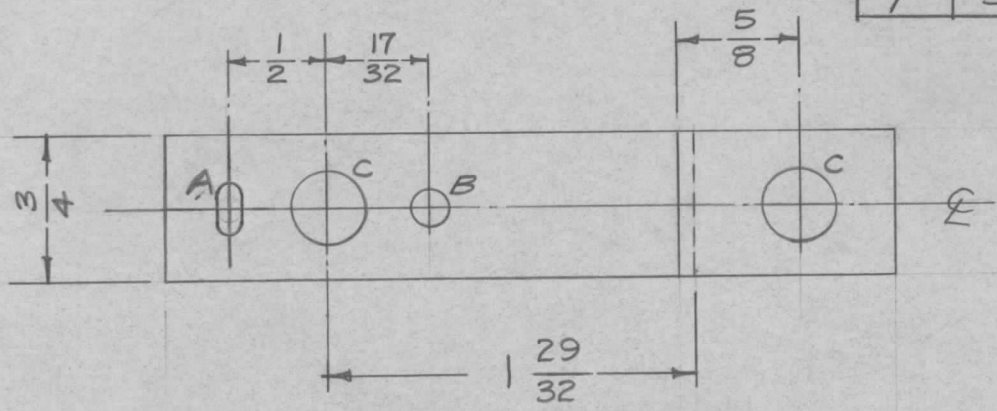
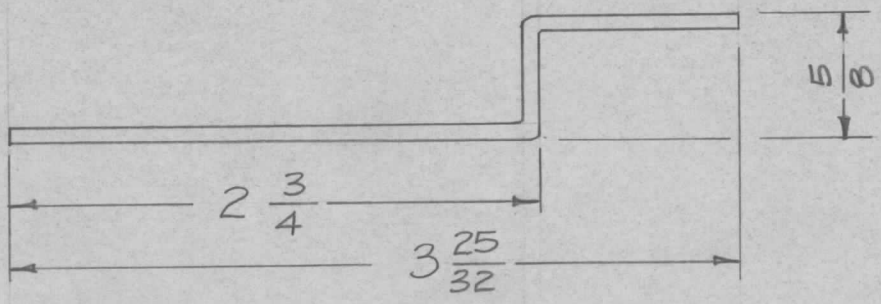


REQ. PER UNIT	USED ON		
	MODEL	ASS'Y. NO.	DATE
1	SBE-1		10-10-57
1	SBE-2		5-5-58
1	SBE-3	AP-101	11-30-59

MS-1155 A



- A - $\frac{1}{8} \times \frac{1}{4}$ SLOT. 1 Req.
- B - $\frac{3}{16}$ (.187) D. 1 Req.
- C - $\frac{13}{32}$ (.406) D. 2 Req.



UNLESS OTHERWISE SPECIFIED
DIMENSIONS ARE IN INCHES AND INCLUDE
CHEMICALLY APPLIED OR PLATED FINISHES

DECIMALS	TOLERANCES	FRACTIONS
.X ± .05		± 1/64
.XX ± .01		ANGLES
.XXX ± .005		± 0° 30'

CUT HERE
GUARANTEED
2-66

ISSUE	ITEM	CHANGED FROM	DATE	CH. NO.	DRAFTS	CHECKER	ENG. APP.	REQ. ITEM	PART NO.	DESCRIPTION	SYMBOL			
									.081 THK STOCK SIZE	THE TECHNICAL MATERIEL CORP. MAMARONECK, NEW YORK				
A	1	S404-IRIDITE WAS S101-CAUSTIC DIP	12-8 59	1001	P		EMN		Aluminum	BRACKET, POTENTIOMETER, R135 (SBE-1)				
TOLERANCES								SCALE: FULL		5052-H32	1610-10-57	APB		
DEC. DIM. ± FRAC. DIM. ± ANGULAR DIM. ±								MAXIMUM ALLOWABLE TOLERANCES HAVE BEEN DETERMINED AND ANY DEVIATIONS WILL BE CAUSE FOR REJECTION. REMOVE ALL BURRS AND SHARP EDGES		TYPE & TEMPER	HEAT TREAT. SPEC.	DRAWN	CHECKED	FINAL APPROVAL
								S404-IRIDITE						
								FINISH & SPEC. NO.		ELEC. DES. APP.	MECH. DES. APP.	MS-1155 A		