

IF IT IS FOUND DESIRABLE TO CHANGE ANY TOLERANCE OR OTHER DETAIL SPECIFIED ON THIS DRAWING NOTIFY THE PURCHASER PROMPTLY.

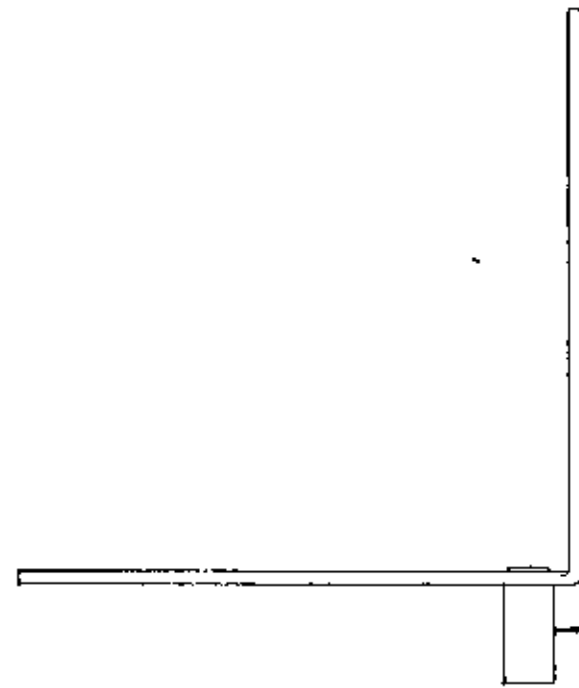
MAXIMUM ALLOWABLE TOLERANCES HAVE BEEN DETERMINED AND DEVIATIONS WILL BE CAUSE FOR REJECTION. REMOVE ALL BURRS AND SHARP EDGES

REVISIONS RECEIVING THIS DRAWING

THE TECHNICAL MATERIEL CORPORATION claims copyright in the material disclosed herein. This drawing is issued in confidence for engineering purposes only and may not be reduced or used to manufacture anything shown hereon without permission from THE TECHNICAL MATERIEL CORPORATION to the user. This drawing is loaned for mutual assistance and is subject to recall at any time.

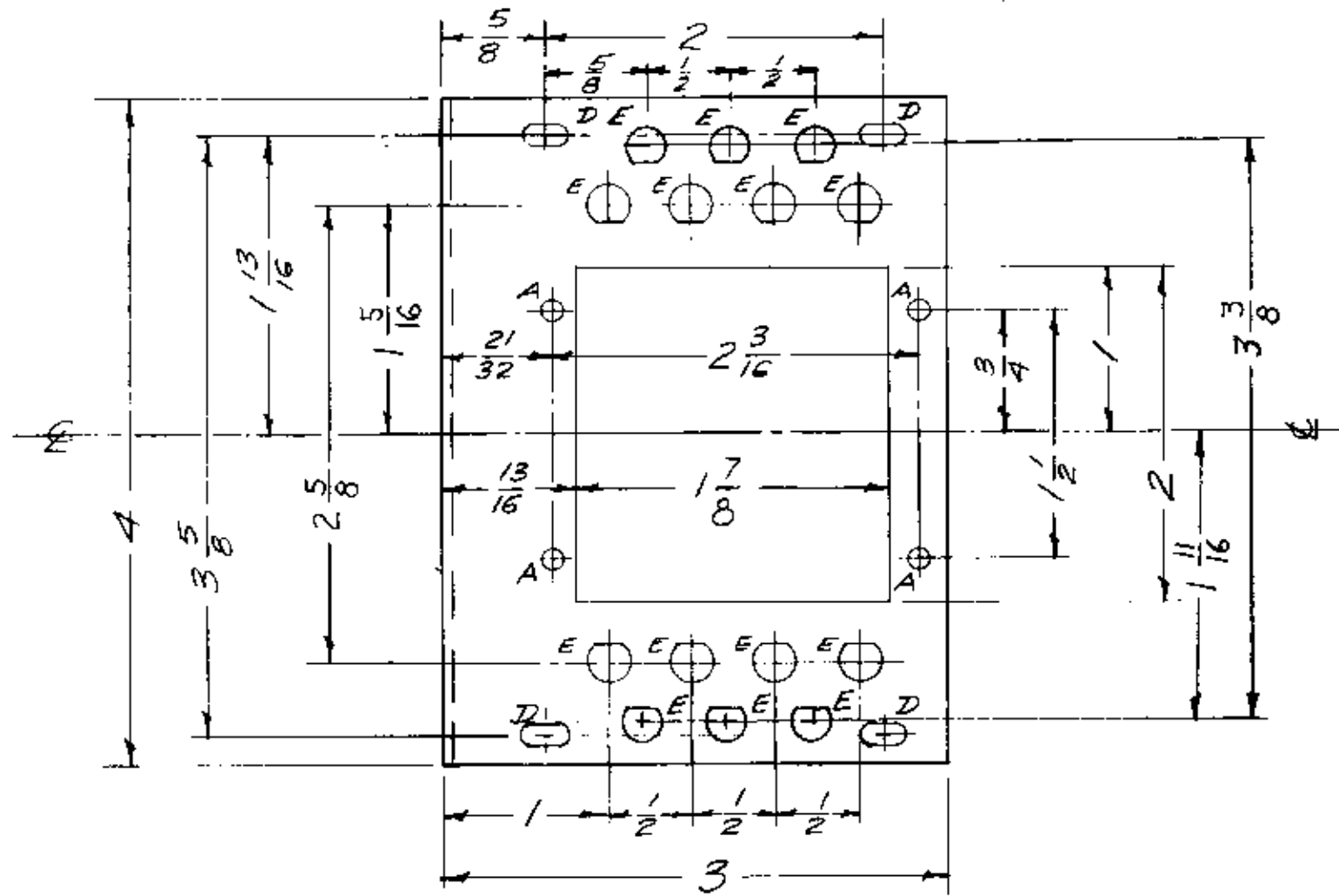
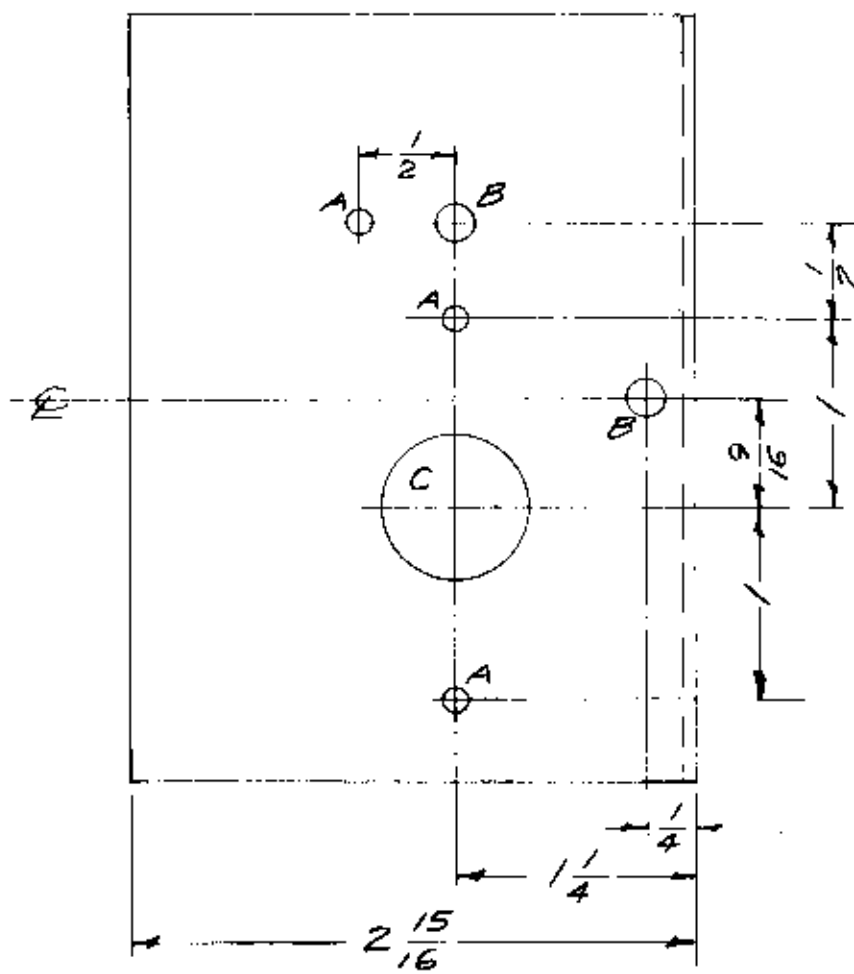
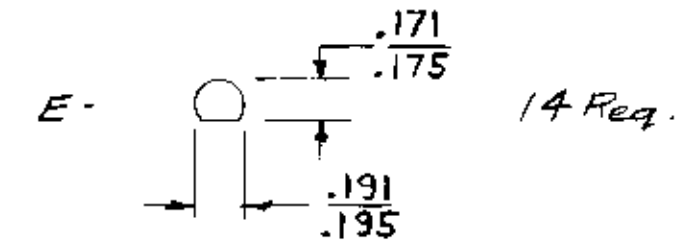
Proprietor:

THE TECHNICAL MATERIEL CORPORATION
MAMARONECK, NEW YORK



TE-108-19 Position as shown in "B" Hole. 1 Req.

- A - $\frac{1}{8}$ (.125) D. 7 Req.
- B - $\frac{3}{16}$ (.187) D. 2 Req.
- C - $\frac{3}{4}$ (.750) D. 1 Req.
- D - $\frac{1}{8} \times \frac{1}{4}$ SLOT 4 Req.



MS-1139 E

Ref - MS-1110 Inner Shell, Top
MS-1109 Cover, Inner Shell
LD-365-2 Stamping

| | | | | | | | |
|------------|--|---|-------|---------|--------|---------|-----------|
| E | E HOLES RELOCATED & UPDATED. | 6-29-67 | 18313 | L.A.K. | 1/17 | | |
| D | 6 E HOLES ADDED | 11-26-66 | 5562 | A.L.V. | 1/10 | | |
| C | 1 1/2" DIM. WAS 2 | 7-18-66 | 5286 | G.D.L. | RU | | |
| B | 2" X 2" CUTOUT WAS 1-7/8" X 2" CUTOUT | 3-7-60 | 2834 | RU | JCS | | |
| A | S404 - IRIDITE WAS S101 - CAUSTIC DIP | 1-9-59 | 1001 | CP | | | EMN |
| ISSUE | ITEM | CHANGED FROM | DATE | CN. NO. | DRAFTS | CHECKER | ENG. APP. |
| TOLERANCES | | SCALE: FULL | | | | | |
| ALL OTHERS | DEC. DIM. $\pm 1/64$ FRAC. DIM. \pm ANGULAR DIM. \pm | DRILL, PUNCH, COMMERCIAL STOCK SIZES AND MANUFACTURERS TOLERANCES ARE NOT INCLUDED. | | | | | |

| | | | | |
|--------------|------------|-------------|-----------|------|
| 1 | SBE-8-9-10 | AX621 | | |
| 1 | SBE-3 | AO-102 | | |
| 1 | SBE-2 | | | |
| 1 | SBE-1 | | | |
| REQ PER UNIT | MODEL | PROJECT NO. | ABBY. NO. | DATE |
| USED ON | | | | |

| | | | | |
|-----|------|--------------------|--|----------------|
| REQ | ITEM | PART NO. | DESCRIPTION | SYMBOL |
| | | .064 | THE TECHNICAL MATERIEL CORP. MAMARONECK, NEW YORK | |
| | | STOCK SIZE | | |
| | | ALUMINIUM | INNER SHELL, BOTTOM, | |
| | | MATERIAL | XTAL OVEN | |
| | | 5052-H32 | | |
| | | TYPE & TEMPER | 16 9/30/57 | |
| | | HEAT TREAT. SPEC. | | |
| | | S404-YEL-IRIDITE | | |
| | | FINISH & SPEC. NO. | | |
| | | | CHECKED | FINAL APPROVAL |
| | | | | MS-1139 E |