

IF IT IS FOUND DESIRABLE TO CHANGE ANY TOLERANCE OR OTHER DETAIL SPECIFIED ON THIS DRAWING NOTIFY THE PURCHASER PROMPTLY.

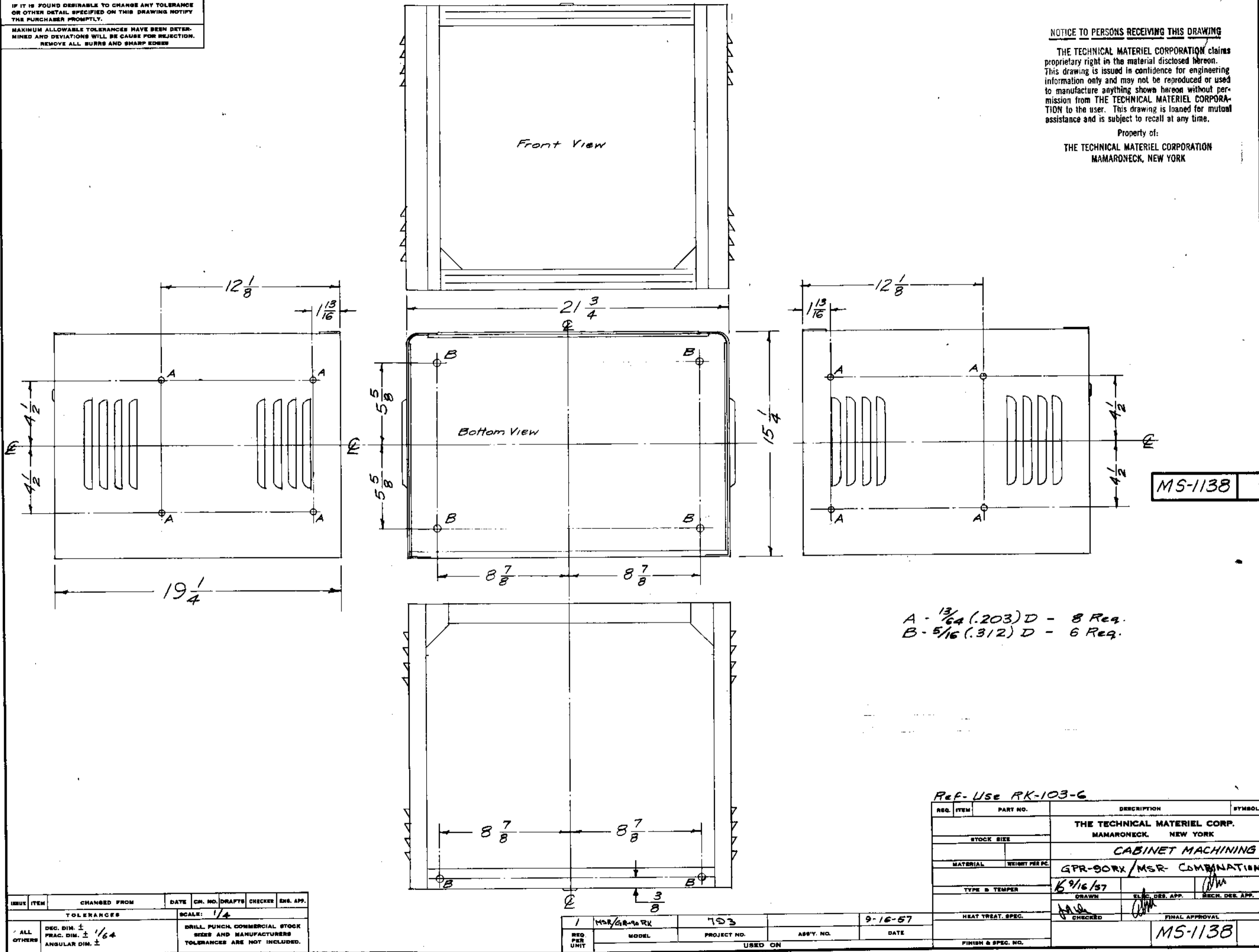
MAXIMUM ALLOWABLE TOLERANCES HAVE BEEN DETERMINED AND DEVIATIONS WILL BE CAUSE FOR REJECTION. REMOVE ALL BURRS AND SHARP EDGES

NOTICE TO PERSONS RECEIVING THIS DRAWING

THE TECHNICAL MATERIEL CORPORATION claims proprietary right in the material disclosed hereon. This drawing is issued in confidence for engineering information only and may not be reproduced or used to manufacture anything shown hereon without permission from THE TECHNICAL MATERIEL CORPORATION to the user. This drawing is loaned for mutual assistance and is subject to recall at any time.

Property of:

THE TECHNICAL MATERIEL CORPORATION
MAMARONECK, NEW YORK



MS-1138

A - $\frac{13}{64}$ (.203) D - 8 Req.
B - $\frac{5}{16}$ (.312) D - 6 Req.

Ref-Use RK-103-6

ISSUE	ITEM	CHANGED FROM	DATE	CR. NO.	DRAFTS	CHECKER	ENG. APP.
TOLERANCES							
SCALE: $\frac{1}{4}$							
ALL OTHERS				DEC. DIM. $\pm \frac{1}{64}$			
				FRAC. DIM. $\pm \frac{1}{64}$			
				ANGULAR DIM. \pm			
DRILL PUNCH, COMMERCIAL STOCK SIZES AND MANUFACTURERS TOLERANCES ARE NOT INCLUDED.							

REQ. PER UNIT	MODEL	PROJECT NO.	ASS'Y. NO.	DATE
1	MSR/GR-96 RK	793		9-16-57
USED ON				

REQ. ITEM	PART NO.	DESCRIPTION	SYMBOL
THE TECHNICAL MATERIEL CORP. MAMARONECK, NEW YORK			
STOCK SIZE			
CABINET MACHINING			
MATERIAL WEIGHT PER SQ.			
GPR-90RX/MSR COMBINATION			
TYPE & TEMPER			
69/16/57			
HEAT TREAT. SPEC.			
CHECKED			
FINAL APPROVAL			
MS-1138			