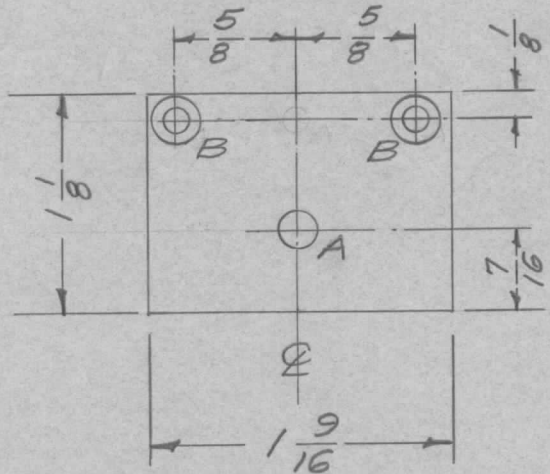


REQ. PER UNIT	USED ON			MS-1135	A
	MODEL	ASS'Y. NO.	DATE		
1	A-1461	A-1461	9-10-57		



A - $\frac{1}{2}$ (.125) D. 2 Req.

A - .189 D. 1 Req. for mtg. of TE-108-18

B - $\left\{ \begin{array}{l} 82^\circ \\ \pm .230 \end{array} \right\}$ - 2 Req. (for #4 FHS)

$\left\{ \begin{array}{l} \pm \\ \pm \end{array} \right\}$ #31 Dr. (.120)

ISSUE	ITEM	CHANGED FROM	DATE	CH. NO.	DRAFTS	CHECKER	ENG. APP.	REQ. ITEM	PART NO.	DESCRIPTION	SYMBOL						
									.064 THK.	THE TECHNICAL MATERIEL CORP.							
									STOCK SIZE	MAMARONECK, NEW YORK							
									Aluminum	CHASSIS, REJECTION NETWORK							
									MATERIAL								
A	1	S404-IRIDITE WAS S101-CAUSTIC DIP	12-8 59	1001	Ⓟ		EMN	5052-H32		16 9/10/57	ADe	CRB					
TOLERANCES								SCALE: FULL									
DEC. DIM. \pm								MAXIMUM ALLOWABLE TOLERANCES HAVE BEEN DETERMINED AND ANY DEVIATIONS WILL BE CAUSE FOR REJECTION.									
FRAC. DIM. \pm 1/64								REMOVE ALL BURRS AND SHARP EDGES									
ANGULAR DIM. \pm																	
								TYPE & TEMPER		HEAT TREAT. SPEC.		DRAWN		CHECKED		FINAL APPROVAL	
								S404-IRIDITE				Ⓟ		Ⓟ		MS-1135 A	
								FINISH & SPEC. NO.		ELEC. DES. APP.		MECH. DES. APP.					