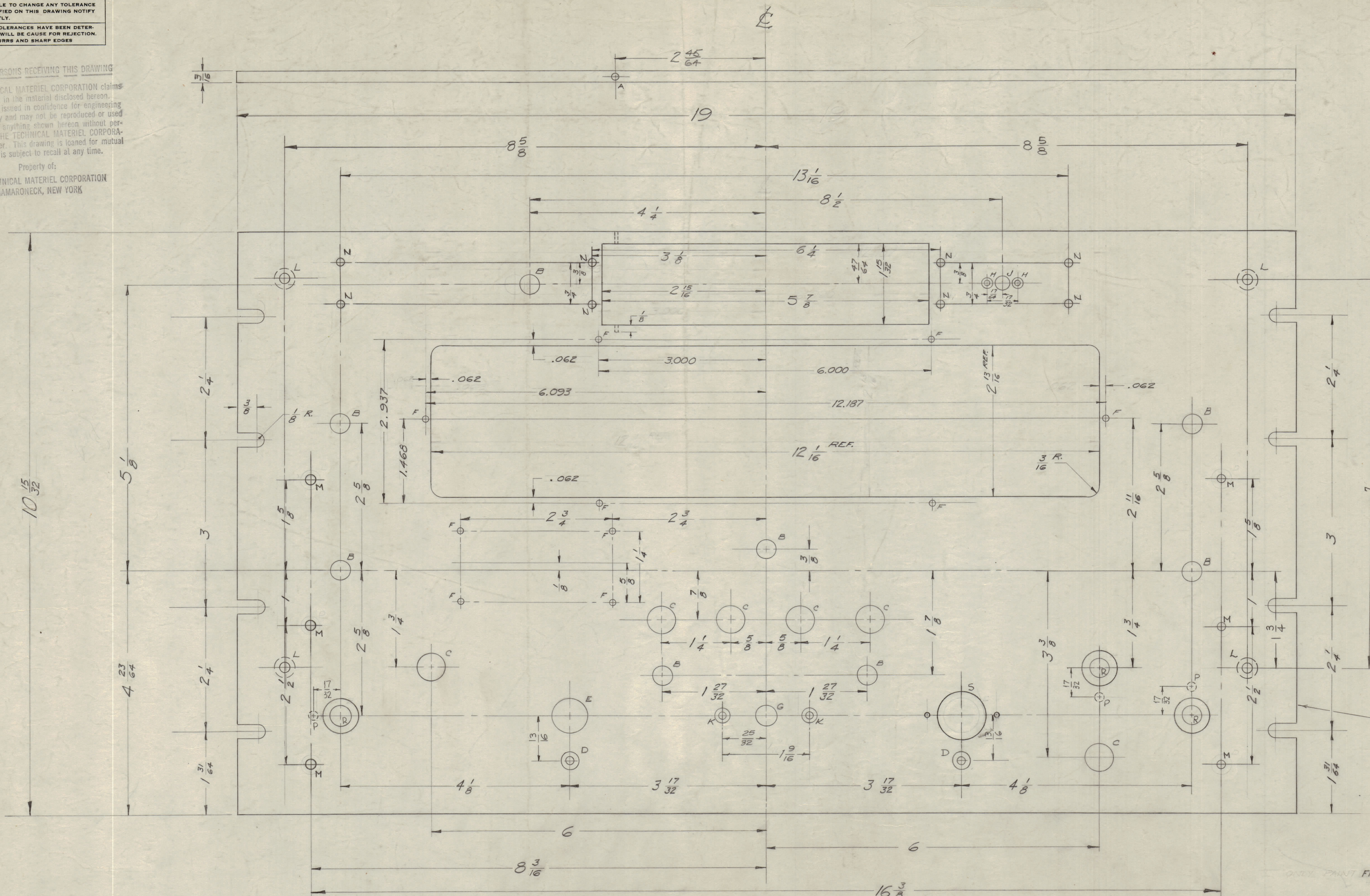


IF IT IS FOUND DESIRABLE TO CHANGE ANY TOLERANCE OR OTHER DETAIL SPECIFIED ON THIS DRAWING NOTIFY THE PURCHASER PROMPTLY.
 MAXIMUM ALLOWABLE TOLERANCES HAVE BEEN DETERMINED AND DEVIATIONS WILL BE CAUSE FOR REJECTION. REMOVE ALL BURRS AND SHARP EDGES

NOTICE TO PERSONS RECEIVING THIS DRAWING

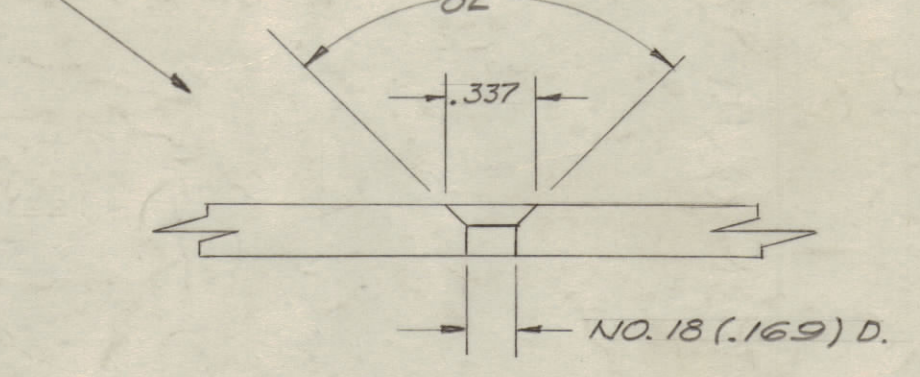
THE TECHNICAL MATERIEL CORPORATION claims proprietary right in the material disclosed herein. This drawing is issued in confidence for engineering information only and may not be reproduced or used to manufacture anything shown herein without permission from THE TECHNICAL MATERIEL CORPORATION to the user. This drawing is loaned for mutual assistance and is subject to recall at any time.

Property of:
 THE TECHNICAL MATERIEL CORPORATION
 MAMARONECK, NEW YORK

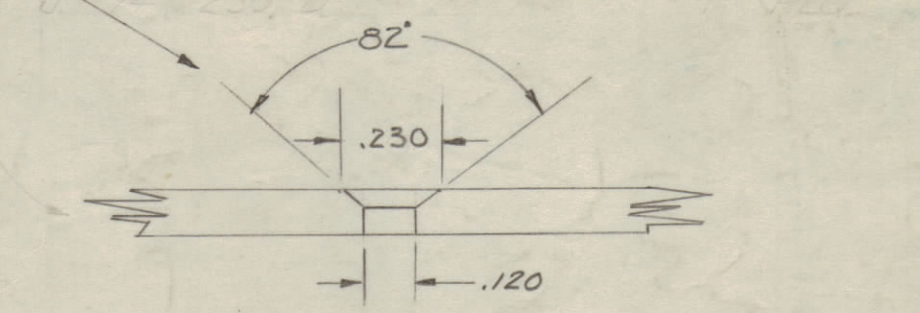


FRONT OF PANEL

- A. NO. 1/8 (.125) DRILL 1 REQ.
- B. 25/64 (.390) D. 8 REQ.
- C. 3/64 (.484) D. 5 REQ.
- D. SEE DETAIL 2 REQ.

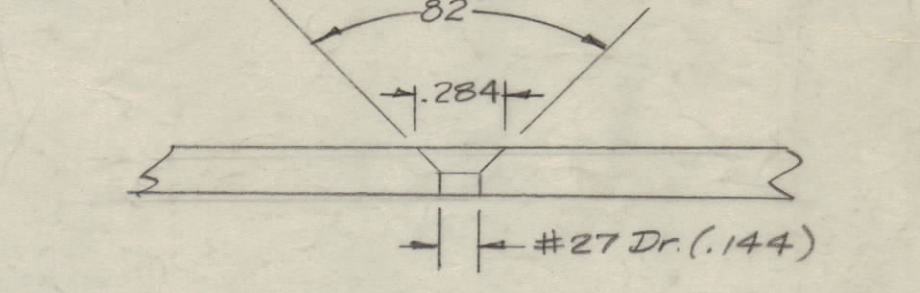


- E. 5/8 (.625) D. 1 REQ.
- F. NO. 47 (.078) D. 10 REQ.
- G. 11/32 (.531) D. 1 REQ.
- H. DRILL & C'SINK FOR 4/40 2 REQ.



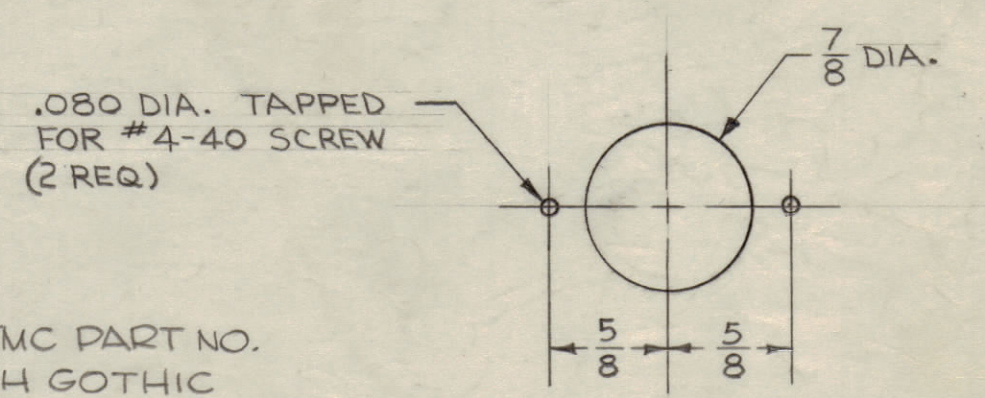
- J. 9/32 (.281) D. 1 REQ.

- K. Drill & C'sink for 6-32 FHS - 2 REQ.



- L. .196 DIA. C'SK 82° X 390 DIA. - 4 REQ (FROM REAR OF PANEL)

- M- NO. 18 (.169) DIA - 6 REQ.
- N- NO. 31 (.120) DIA - 8 REQ.
- P- 5/32 DIA. X 1/8 DP FROM REAR - 3 REQ.
- R- 25/64 DIA. C'BORE 5/8 DIA. X 3/32 DP. - 3 REQ.



MARK TMC PART NO. 1/8 HIGH GOTHIC W/LATEST REVISION LETTER ON REAR OF PANEL.

DETAIL "S" (1REQ)

NOTE - FINISH
 S-404 YEL. IRIDITE
 S-114 ZINC CHROMATE PRIMER
 S-115 SMOOTH GRAY ENAMEL
 OR PRIME & PAINT TO CUSTOMERS SPECIFICATION.

H	10" HOLE REQ WAS 6" E HOLE REQ WAS 2. CHG'D E HOLE TO 'S'. ADD 'S' DETAIL	10-14-66	10-14-66	R	85	
G	3 TMC PT. NO. ADD TO REAR					
F	2 PER HOLES ADDED 3 B HOLES DELETED	5-18-64	16259			
E	4 MODEL GPR-90 RXD ADDED 3 (B) 'H' & (C) 'D' HOLES DELETED 2 (B) 'N' HOLES ADDED 1 (C) 'M' HOLES ADDED	1/21-64	11832			
D	4 'L' HOLES ADDED 4 'NOTE ADDED	7/29-64	10172			
C	1 (2) 'D' HOLES ADDED	8-30-64	2880			
B	1 S-404 YEL. IRIDITE WAS S-101 CAUSTIC DIP	2/9-59	1001	bb		
A	1 2 5/16 WAS 2 11/16 TWO 'K' HOLES ADDED TO ACCORD NEW LOCATION OF DETENT/B WAS 13/32	3/21-59	899			

ISSUE	ITEM	CHANGED FROM	DATE	CN. NO.	DRAFTS	CHECKER	ENG. APP.
TOLERANCES							
ALL OTHERS	DEC. DIM. ± FRAC. DIM. ± 1/64 ANGULAR DIM. ±		DRILL, PUNCH, COMMERCIAL STOCK SIZES AND MANUFACTURERS TOLERANCES ARE NOT INCLUDED.				

1	GPR-90RXD		10-23-63
1	GPR-90 RX		8-13-57
REQ PER UNIT	MODEL	PROJECT NO.	ASBY. NO.
			DATE
			USED ON

REF. LD. 363 & MS-1127			
REQ. ITEM	PART NO.	DESCRIPTION	SYMBOL
3/16		THE TECHNICAL MATERIEL CORP. MAMARONECK, NEW YORK	
ALUMINUM		FRONT PANEL	
MATERIAL	WEIGHT PER FC.	GPR 90 RX	
245-73		8-13-57	P.R.K.
TYPE & TEMPER			
HEAT TREAT. SPEC.			
SEE NOTE			
FINISH & SPEC. NO.			

MS 1128 H