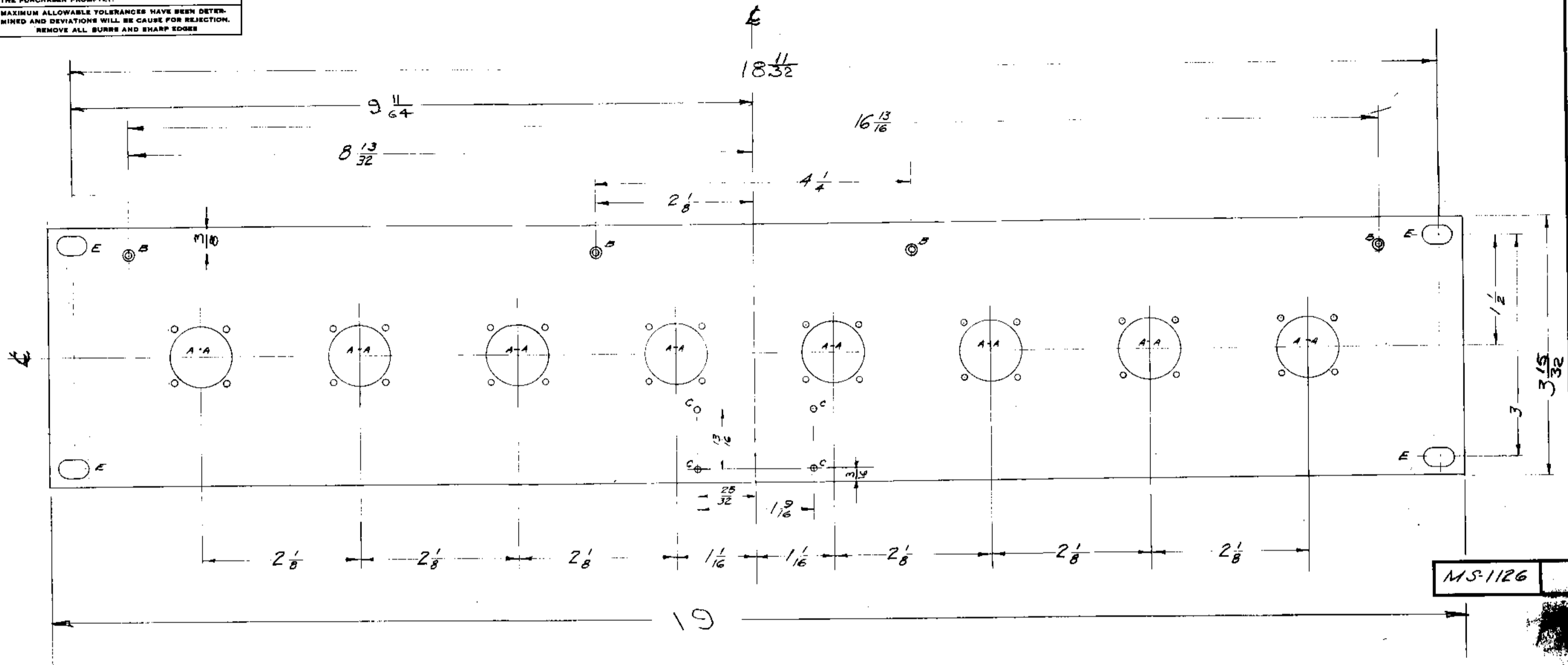


IF IT IS FOUND DESIRABLE TO CHANGE ANY TOLERANCE OR OTHER DETAIL SPECIFIED ON THIS DRAWING NOTIFY THE PURCHASER PROMPTLY.

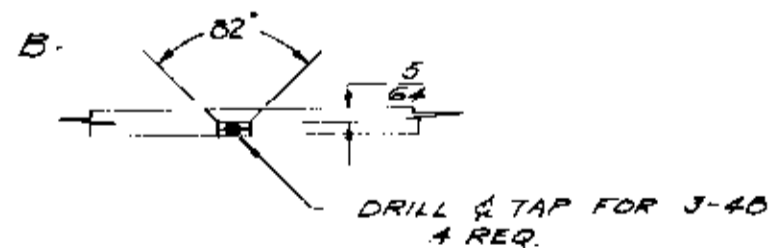
MAXIMUM ALLOWABLE TOLERANCES HAVE BEEN DETERMINED AND DEVIATIONS WILL BE CAUSE FOR REJECTION. REMOVE ALL BURRS AND SHARP EDGES



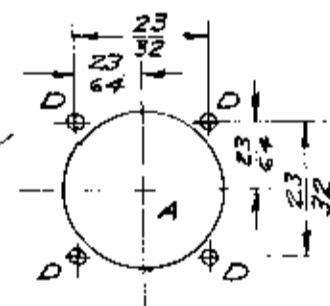
MS-1126

**LEGEND**

A- 13/16 (Ø) D. 8 REQ.



- C- DRILL # 47 DRILL 4 REQ.
- D- DRILL FOR 4-40 32 REQ.
- E- 13/32 X 1/4 4 SLOTS REQ.



**NOTE**

S-404 YEL-IRIDITE  
 S-114 ZINC CHROMATE PRIMER  
 S-115 SMOOTH GRAY ENAMEL  
 OR PRIME & PAINT TO CUSTOMERS SPECIFICATION.  
 PAINT FRONT & EDGES ONLY.

**NOTICE TO PERSONS RECEIVING THIS DRAWING**

THE TECHNICAL MATERIEL CORPORATION claims proprietary right in the material disclosed hereon. This drawing is issued in confidence for engineering information only and may not be reproduced or used to manufacture anything shown hereon without permission from THE TECHNICAL MATERIEL CORPORATION to the user. This drawing is loaned for mutual assistance and is subject to recall at any time.

Property of:  
 THE TECHNICAL MATERIEL CORPORATION  
 MAMARONECK, NEW YORK

ISSUE	ITEM	CHANGED FROM	DATE	GN. NO.	DRAFTER	CHECKER	ENG. APP.
A	1	S-404 IRIDITE WAS S/D/ CAUSTIC DIP	12-9-57	1001	P		EMM
TOLERANCES		SCALE:					
ALL OTHERS	DEC. DIM. ±	FRAC. DIM. ±	ANGULAR DIM. ±	DRILL PUNCH, COMMERCIAL STOCK SIZES AND MANUFACTURERS TOLERANCES ARE NOT INCLUDED.			
		± 1/64					

REQ PER UNIT	MODEL	PROJECT NO.	ASSY. NO.	DATE
1	QDP-68		A-2203	10-18-61
1	QDP-48		A-1452	8-12-57
1	QDP-38		A-1452	8-12-57
USED ON				

REQ. ITEM	PART NO.	DESCRIPTION	SYMBOL
3/16		THE TECHNICAL MATERIEL CORP. MAMARONECK, NEW YORK	
ALUMINUM	#	FRONT PANEL, MACHINING	
MATERIAL	WEIGHT PER PC.	QDP-	
5052-H32			
TYPE & TEMPER	8c.	8-12-57	
HEAT TREAT. SPEC.			
FINISH & SPEC. NO.			
SEE NOTE			
		MS-1126	A