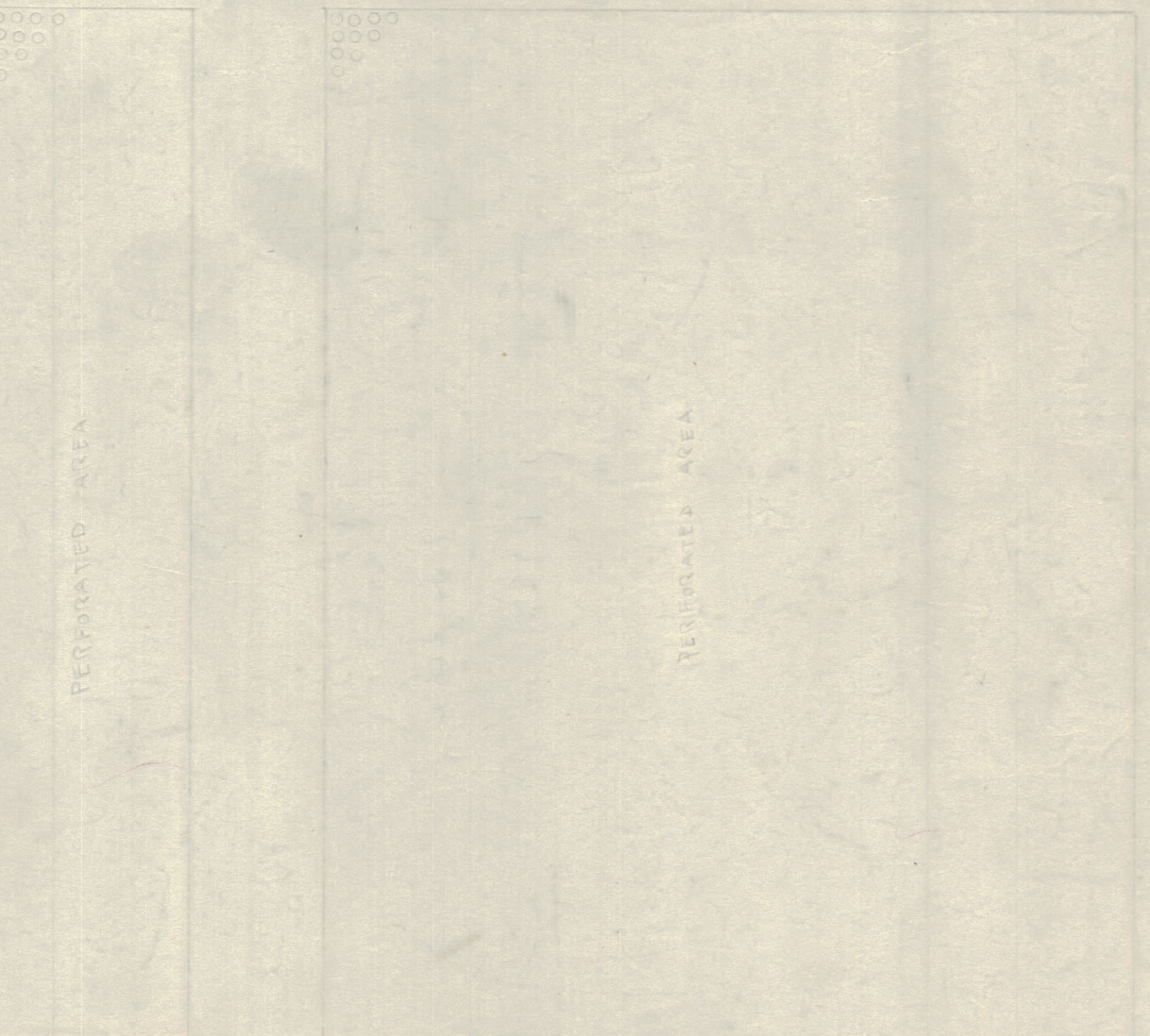
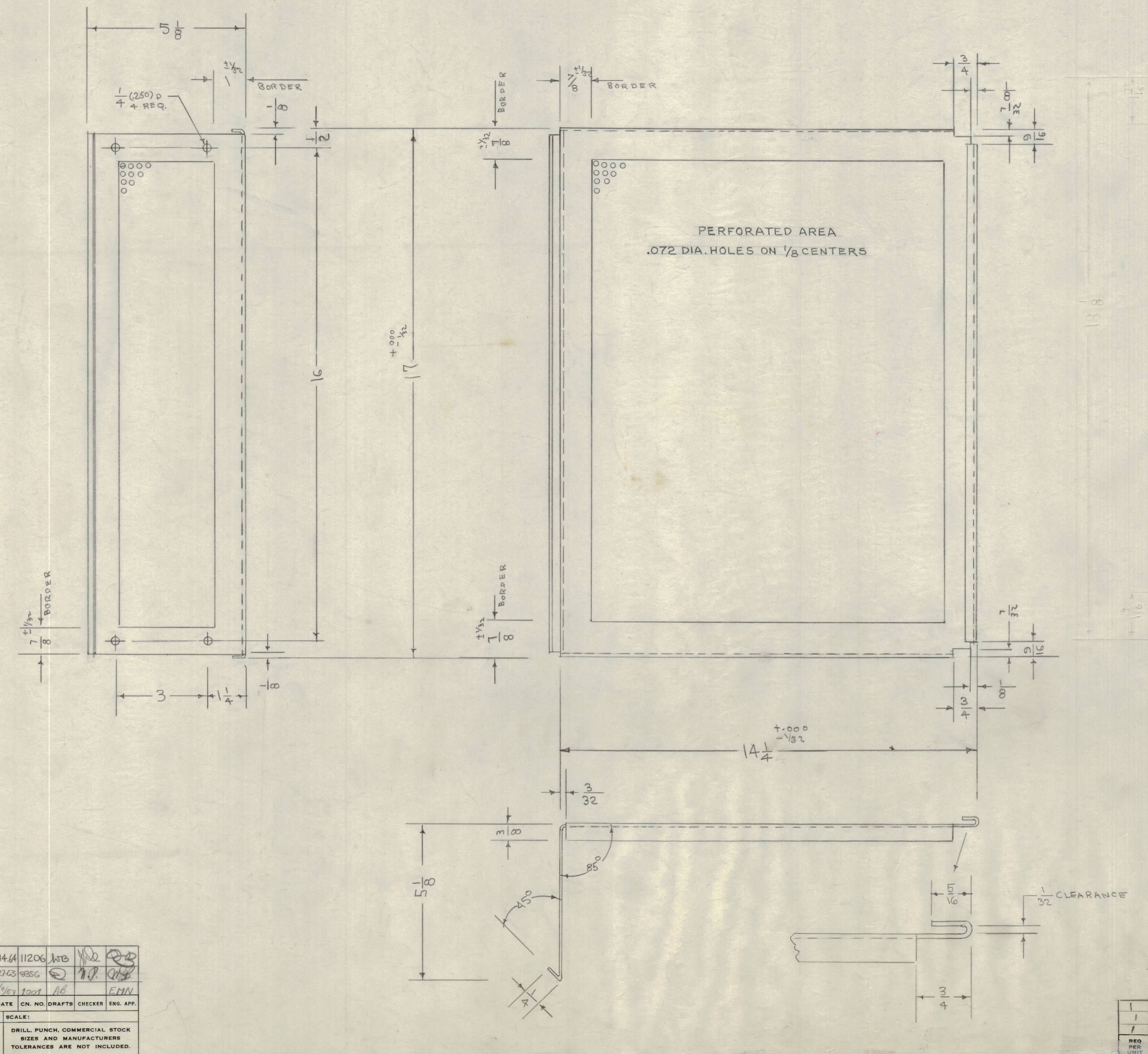


IF IT IS FOUND DESIRABLE TO CHANGE ANY TOLERANCE OR OTHER DETAIL SPECIFIED ON THIS DRAWING NOTIFY THE PURCHASER PROMPTLY.
 MAXIMUM ALLOWABLE TOLERANCES HAVE BEEN DETERMINED AND DEVIATIONS WILL BE CAUSE FOR REJECTION. REMOVE ALL BURRS AND SHARP EDGES.

NOTICE TO PERSONS RECEIVING THIS DRAWING
 THE TECHNICAL MATERIEL CORPORATION claims proprietary right in the material disclosed hereon. This drawing is issued in confidence for engineering information only and may not be reproduced or used to manufacture anything shown hereon without permission from THE TECHNICAL MATERIEL CORPORATION to the user. This drawing is loaned for mutual assistance and is subject to recall at any time.
 Property of:
 THE TECHNICAL MATERIEL CORPORATION
 MAMARONECK, NEW YORK



ISSUE	ITEM	CHANGED FROM	DATE	CN. NO.	DRAFTS	CHECKER	ENG. APP.
C	2	BLANK SIZE DELETED	4-14-54	11206	JTB	<i>[Signature]</i>	<i>[Signature]</i>
B	1	PERFORATED NOTE ADDED					
B	1	ADDED BLANK SIZE NOTE	6-24-53	938G	<i>[Signature]</i>	<i>[Signature]</i>	<i>[Signature]</i>
A	1	DELETED BLANK LAYOUT PICK					
A	1	1-.407 YEL IRIDITE WAS	11-15-52	1007	AB		EMN
A	1	5-101 CAUSTIC DIP					

TOLERANCES
 SCALE:
 DRILL, PUNCH, COMMERCIAL STOCK SIZES AND MANUFACTURERS TOLERANCES ARE NOT INCLUDED.

REQ. PER UNIT	MODEL	PROJECT NO.	ASSY. NO.	DATE
1	SBE-3		AD-101	11-23-50
1	SBE-2		A-1516	5-2-58
1	SBE-1			7-25-52

REQ. ITEM	PART NO.	DESCRIPTION	SYMBOL
-	-051	THE TECHNICAL MATERIEL CORP. MAMARONECK, NEW YORK	
	ALUMINUM	TOP COVER	
	MATERIAL	WEIGHT PER PC	
	525H32		
	TYPE & TEMPER		
	HEAT TREAT. SPEC.		
	CHECKED	FINAL APPROVAL	

FINISH & SPEC. NO.
 5-404 YEL IRIDITE
 MS-1116

MS-1116 C