

IF IT IS FOUND DESIRABLE TO CHANGE ANY TOLERANCE OR OTHER DETAIL SPECIFIED ON THIS DRAWING NOTIFY THE PURCHASER PROMPTLY.

MAXIMUM ALLOWABLE TOLERANCES HAVE BEEN DETERMINED AND DEVIATIONS WILL BE CAUSE FOR REJECTION. REMOVE ALL BURRS AND SHARP EDGES

PERSONS RECEIVING THIS DRAWING  
 THE TECHNICAL MATERIEL CORPORATION claims  
 copyright in the material disclosed hereon.  
 This drawing is issued in confidence for engineering  
 information only and may not be reproduced or used  
 to manufacture anything shown hereon without per-  
 mission from THE TECHNICAL MATERIEL CORPORA-  
 TION to the user. This drawing is loaned for individ-  
 ual assistance and is subject to recall at any time.

Property of:  
 THE TECHNICAL MATERIEL CORPORATION  
 MAMARONECK, NEW YORK

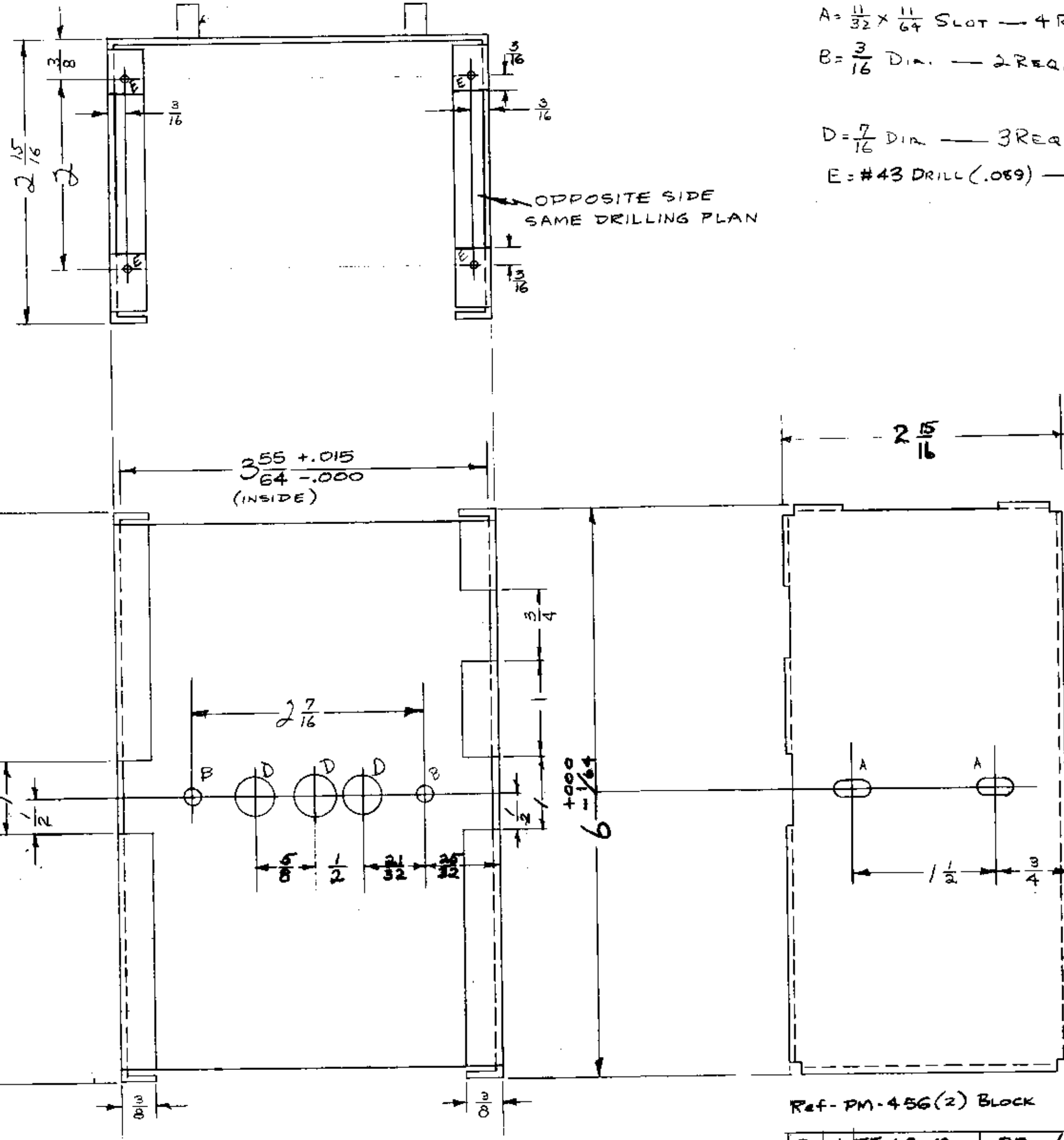
① TE-108-18- 2 Req.

A =  $\frac{1}{32} \times \frac{1}{64}$  SLOT - 4 REQ.

B =  $\frac{3}{16}$  DIA. - 2 REQ. See item ①

D =  $\frac{7}{16}$  DIA. - 3 REQ.

E = #43 DRILL (.059) - 8 REQ.



MS-1109 F

Ref-PM-456(2) Block

ISSUE ITEM	CHANGED FROM	DATE	EN. NO.	DRAFTER	CHECKER	ENG. APP.
F	NOTCH ADDED (3/4")	6/20/66	16439	WHD	QCB	
E	NOTCH ADDED (2 PLS)	3/27/65	15502	ZLK	WHD	
D	D HOLE WAS 1 REQD	2/20/64	10920	AM	QCB	
C	CUTOUT & 3/4 DIA. SLOTTED FROM INSIDE	11/15/58	10335	ZLK	WHD	
B	INSIDE DIM. ADDED	11/15/58	2	16	WHD	
A	"E" HOLE WAS #45 DR.	3/20/59	1	16	2R	

TOLERANCES	SCALE:
ALL DEC. DIM. ± FRACTIONAL DIM. ± ANGULAR DIM. ±	DRAWN: QCB CHECKED: WHD FINAL APPROVAL: WHD
	DRILL, PUNCH, COMMERCIAL STOCK SIZES AND MANUFACTURERS TOLERANCES ARE NOT INCLUDED.

REQ. PER UNIT	MODEL	PROJECT NO.	ASBY. NO.	DATE
1	SBE-3	10-102	12-2-59	
1	SBE-2	A-1516	5-2-59	
	SBE-1	380	7/22/57	

REQ. ITEM	PART NO.	DESCRIPTION	SYMBOL
2	TE-108-18	Standoff Rivet Type	
		.064 GA	
		ALUMINUM	
		5052-H32	
		COVER, XTAL OVEN INNER SHELL	
		E&L	
		MS-1109 F	