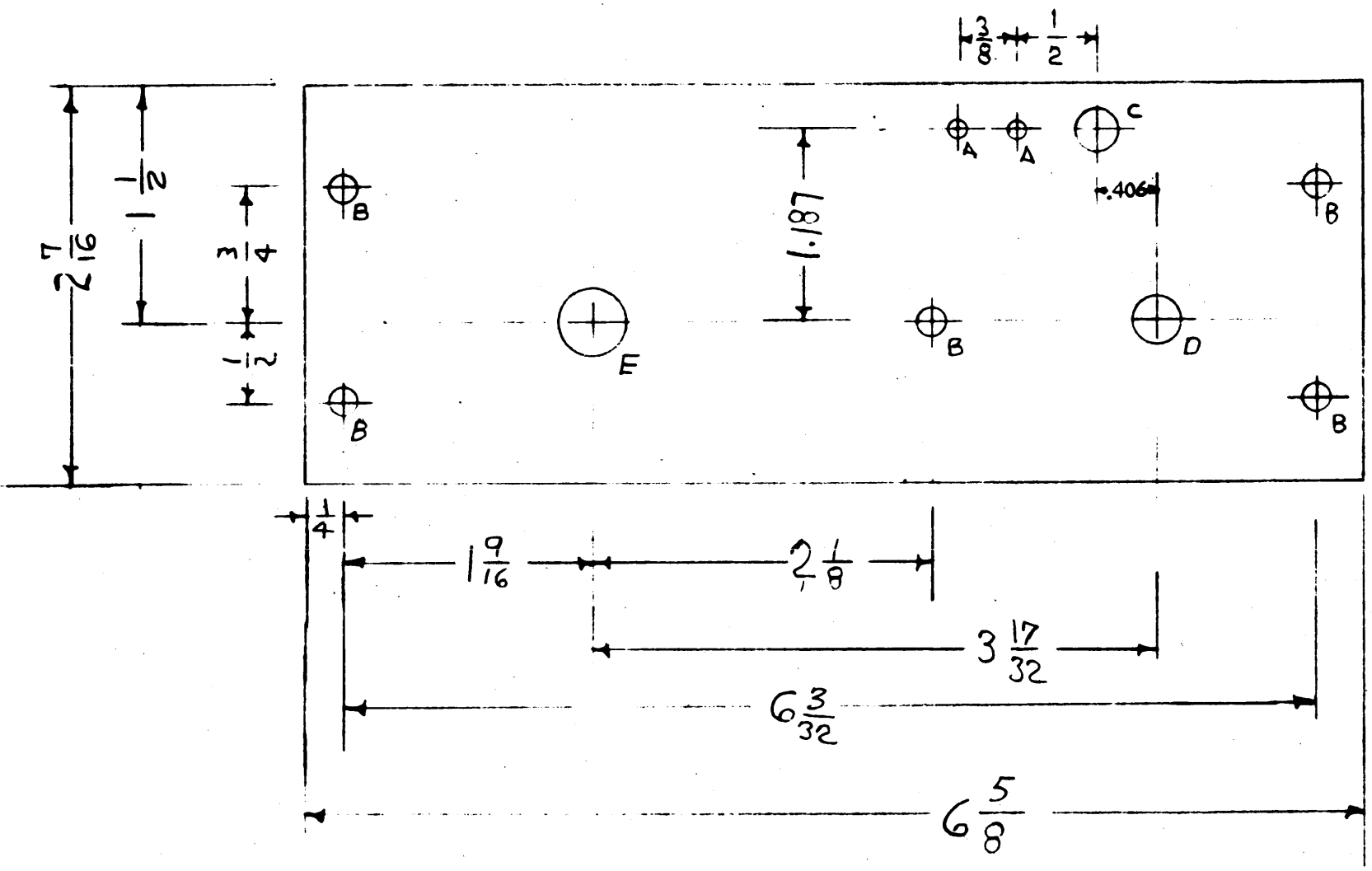


MS-1104 B



A = 1/8 D 2 REQ.

B = 11/64 5 REQ

C = 9/32 1 REQ

D = 5/16 AFTER ETCH HOLD

E = 7/16 " " " " "

NOTICE TO PERSONS RECEIVING THIS DRAWING

THE TECHNICAL MATERIEL CORPORATION claims proprietary right in the material disclosed hereon. This drawing is issued in confidence for engineering information only and may not be reproduced or used to manufacture anything shown hereon without permission from THE TECHNICAL MATERIEL CORPORATION to the user. This drawing is loaned for mutual assistance and is subject to recall at any time.

Property of:
THE TECHNICAL MATERIEL CORPORATION
MAMARONECK, NEW YORK

DEC. DIM. ±	MAXIMUM ALLOWABLE TOLERANCES HAVE BEEN DETERMINED AND ANY DEVIATIONS WILL BE CAUSE FOR REJECTION.					
FRAC. DIM. ±	REMOVE ALL BURRS AND SHARP EDGES					
ANGULAR DIM. ±						
ISSUE ITEM	MAN ED FROM	DATE	CH. NO.	DRAFTS	CHECKER	ENG. APP.
B 1	S-404 WAS S-101	12/14/59	1001	#13		EMN
A 1	2 7/16 WAS 2 1/2 .406 WAS .375	8/2/57	1	16	DB	EMN
TOLERANCES		SCALE: 2-1022				

REQ. PER UNIT	MODEL	PROJECT NO.	ASS'Y. NO.	DATE
USED ON				

REQ. ITEM	PART NO.	DESCRIPTION	SYMBOL
	1/8 THICK	THE TECHNICAL MATERIEL CORP. MAMARONECK, NEW YORK	
	STOCK SIZE		
	ALUMINUM	GEAR PLATE, SUB	
	MATERIAL	SBE-1	
2024-73		DB	EMN
TYPE & TEMPER	HEAT TREAT. SPEC.	DRAWN	HECKED
S-404 YELLOW IRIDITE		DB	EMN
FINISH & SPEC. N.		ELEC. DES. APP.	MECH. DES. APP.
			MS-1104 B