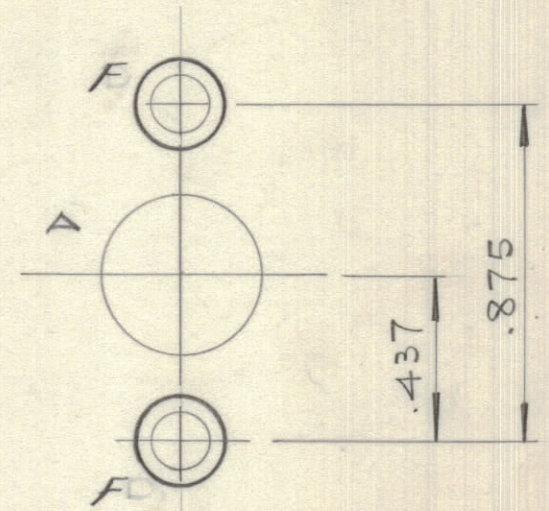
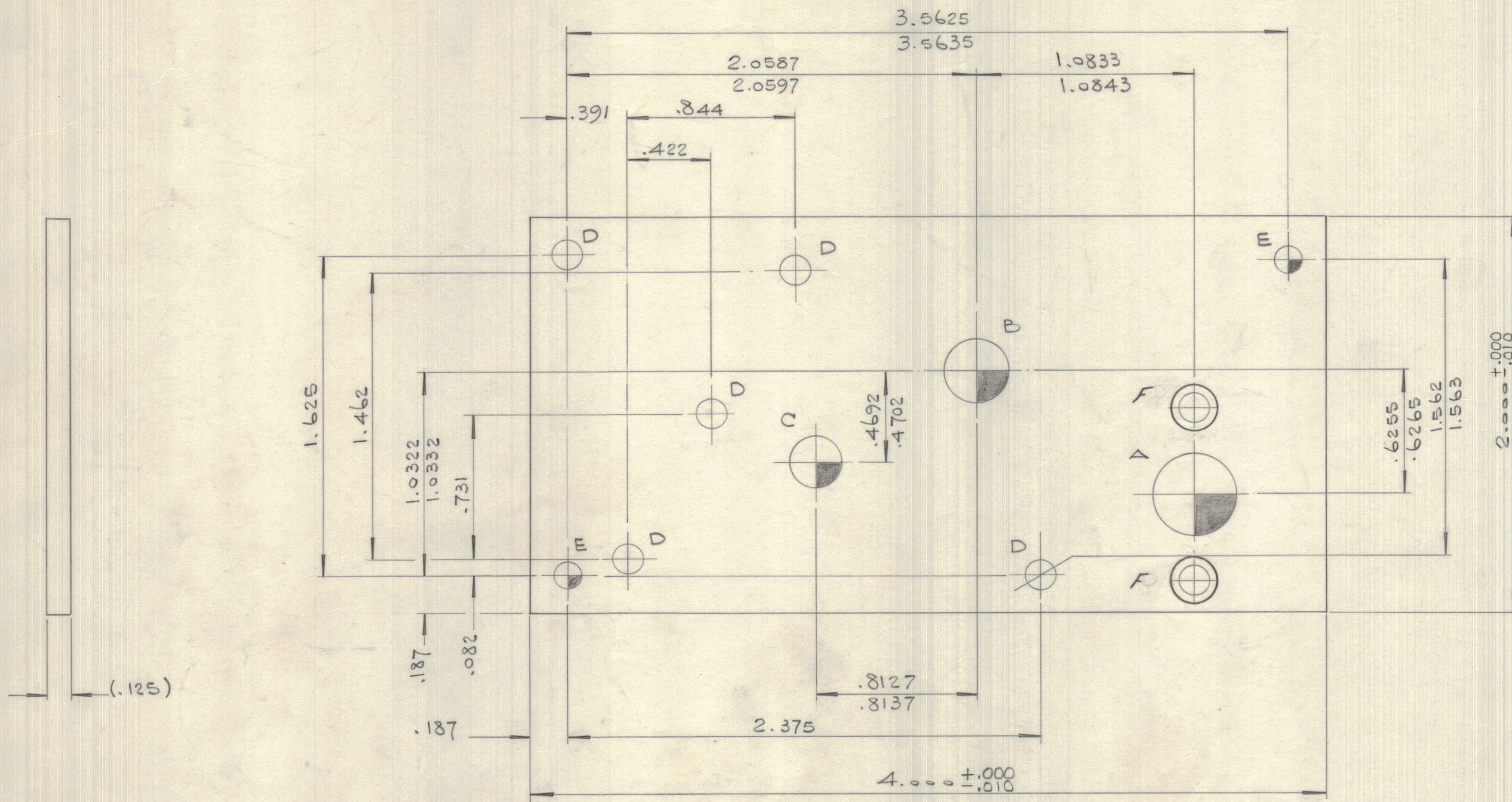


IF IT IS FOUND DESIRABLE TO CHANGE ANY TOLERANCE OR OTHER DETAIL SPECIFIED ON THIS DRAWING NOTIFY THE PURCHASER PROMPTLY.				DIMENSIONS IN INCHES UNLESS OTHERWISE SPECIFIED			
MAXIMUM ALLOWABLE TOLERANCES HAVE BEEN DETERMINED AND DEVIATIONS WILL BE CAUSE FOR REJECTION. REMOVE ALL BURRS AND SHARP EDGES.							
ISSUE	ITEM	CHANGED FROM	DATE	CH. NO.	DRAFTS	CHECKER	ENG. APP.
Ø		REL TO PROD.	AUG 1-69		AHa		
A		REVISED PER CEMN	AUG 8/69	519	RA		
B		REV PER CEMN	21 FEB 70	724	RW		
C		REV PER CEMN	OCT 6/71	1066	DR		

REQ.	ITEM	PART NO.	DESCRIPTION	SYMBOL
------	------	----------	-------------	--------



MS 11029 C

1. HOLES MARKED MUST BE HELD TO MATE WITH MS 11028
NOTE:

HOLE	DESCRIPTION	Q'TY
A	.377/.380 DIA.	1
B	.3125 DIA	1
C	.251/.252 DIA.	1
D	.140 DIA	5
E	.1240/.1249	2
F	MODIFIED BORE .234 DIA X .095 ±.005 DP	2

TOLERANCES		SCALE: 2:1
ALL OTHERS	DEC. DIM. ± .015 FRAC. DIM. ± 1/64 ANGULAR DIM. ± 0° 30'	.XX+.08 .XX+.01 .XXX+.005
DRILL, PUNCH, COMMERCIAL STOCK SIZES AND MANUFACTURERS TOLERANCES ARE NOT INCLUDED.		

MTR	087/69	JUL 14-69
LPA	088/69	JUL 14-69
MODEL	PROJECT NO.	ASS'Y. NO.
		DATE

.125 THK	TMC (Canada) LIMITED OTTAWA ONTARIO		
STOCK SIZE	GEAR PLATE, REAR		
AL ALLOY	MATERIAL WEIGHT PER PC.		
57S H34	TYPE & TEMPER		
	AHa		SMP
	DRAWN	ELEC. DES. APP.	MECH. DES. APP.
	CHECKED	FINAL APPROVAL	
HEAT TREAT. SPEC.	1R DITE S404		
FINISH & SPEC. NO.	MS 11029 C		