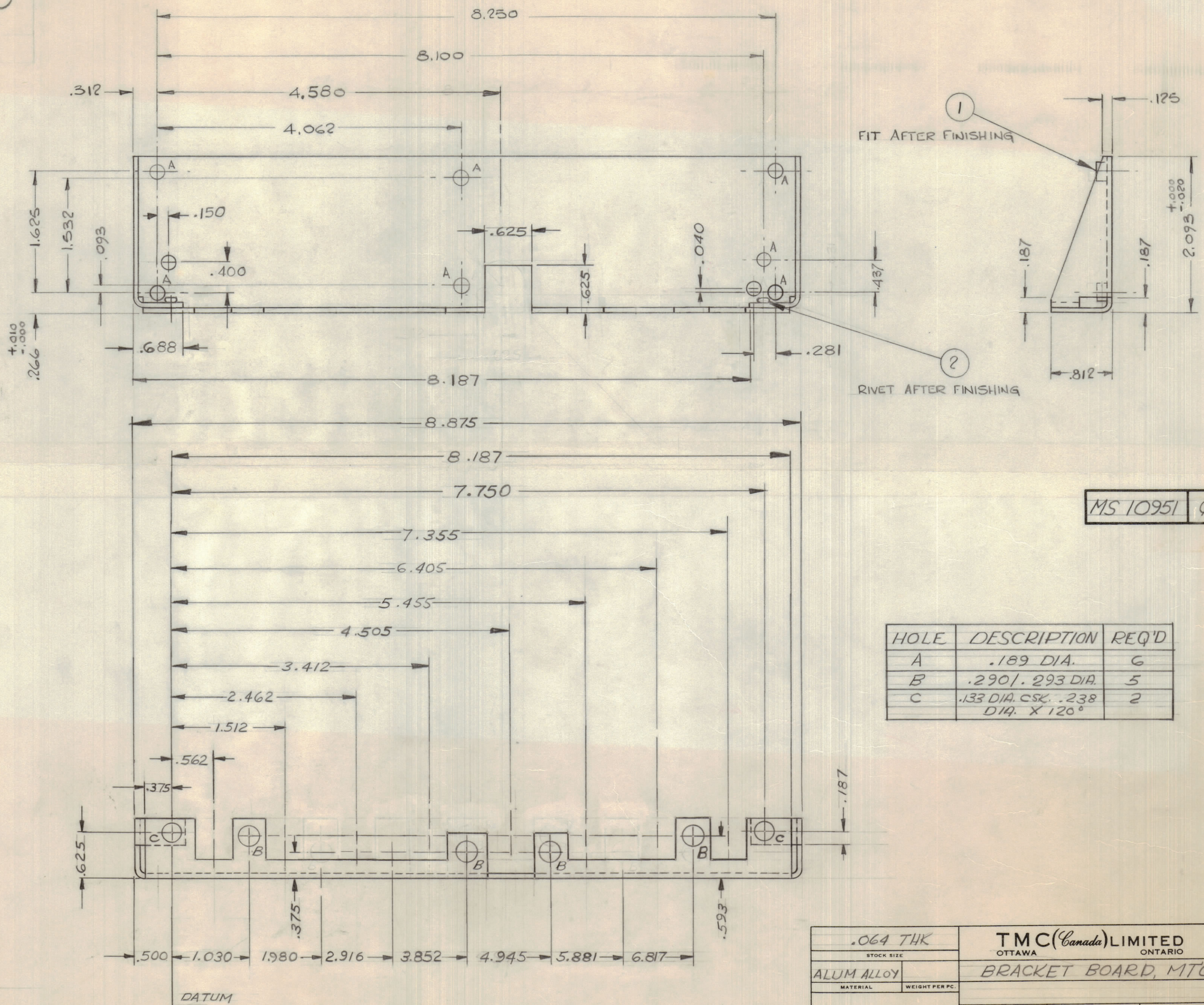


| IF IT IS FOUND DESIRABLE TO CHANGE ANY TOLERANCE OR OTHER DETAIL SPECIFIED ON THIS DRAWING NOTIFY THE PURCHASER PROMPTLY.       |      |              |          |         |        |         | DIMENSIONS IN INCHES UNLESS OTHERWISE SPECIFIED |  |
|---|------|--------------|----------|---------|--------|---------|---|--|
| MAXIMUM ALLOWABLE TOLERANCES HAVE BEEN DETERMINED AND DEVIATIONS WILL BE CAUSE FOR REJECTION. REMOVE ALL BURRS AND SHARP EDGES. |      |              |          |         |        |         |   |  |
| ISSUE   | ITEM | CHANGED FROM | DATE     | CN. NO. | DRAFTS | CHECKER | ENG. APP.                                       |  |
| Ø   |      | REL TO PROD  | MAR 6/69 |         | AD     |         |   |  |

| REQ. | ITEM | PART NO.    | DESCRIPTION               | SYMBOL |
|------|------|-------------|---------------------------|--------|
| 6    | 1    | TE164-6     | NUT PLAIN CLINCH          | A      |
| 2    | 2    | RI10001-423 | RIVET, POP (CSK HD)       | C      |
| 5    | 3    | NT10004-2   | FLOATING INSERT SELF LOCK | B      |



MS 10951 Ø

| HOLE | DESCRIPTION                    | REQ'D |
|------|--------------------------------|-------|
| A    | .189 DIA.                      | 6     |
| B    | .290/.293 DIA.                 | 5     |
| C    | .133 DIA. CSK .238 DIA. X 120° | 2     |

1. ALL BENDS .06 INT RAD.

NOTE:

|            |  |   |
|------------|--|---|
| TOLERANCES |  | SCALE: 1:1  |
| ALL OTHERS | DEC. DIM. ± .015<br>FRAC. DIM. ± 1/64<br>ANGULAR DIM. ± 0° 30' | DRILL, PUNCH, COMMERCIAL STOCK<br>SIZES AND MANUFACTURERS<br>TOLERANCES ARE NOT INCLUDED. |

|        |             |           |
|--------|-------------|-----------|
| AMC 32 | 074/69      | 22 FEB 69 |
| MODEL  | PROJECT NO. | DATE      |

|                    |                |                      |                                 |
|--------------------|----------------|----------------------|---------------------------------|
| .064 THK           |                | TMC (Canada) LIMITED |                                 |
| STOCK SIZE         |                | OTTAWA ONTARIO       |                                 |
| ALUM ALLOY         |                | BRACKET BOARD, MTG   |                                 |
| MATERIAL           | WEIGHT PER PC. |                      |                                 |
| TYPE & TEMPER      |                | SIMPSON              |                                 |
|                    |                | DRAWN                | ELEC. DES. APP. MECH. DES. APP. |
| HEAT TREAT. SPEC.  |                | CHECKED              | FINAL APPROVAL                  |
| IRIDITE 5 404      |                | MS 10951 Ø           |                                 |
| FINISH & SPEC. NO. |                |                      |                                 |