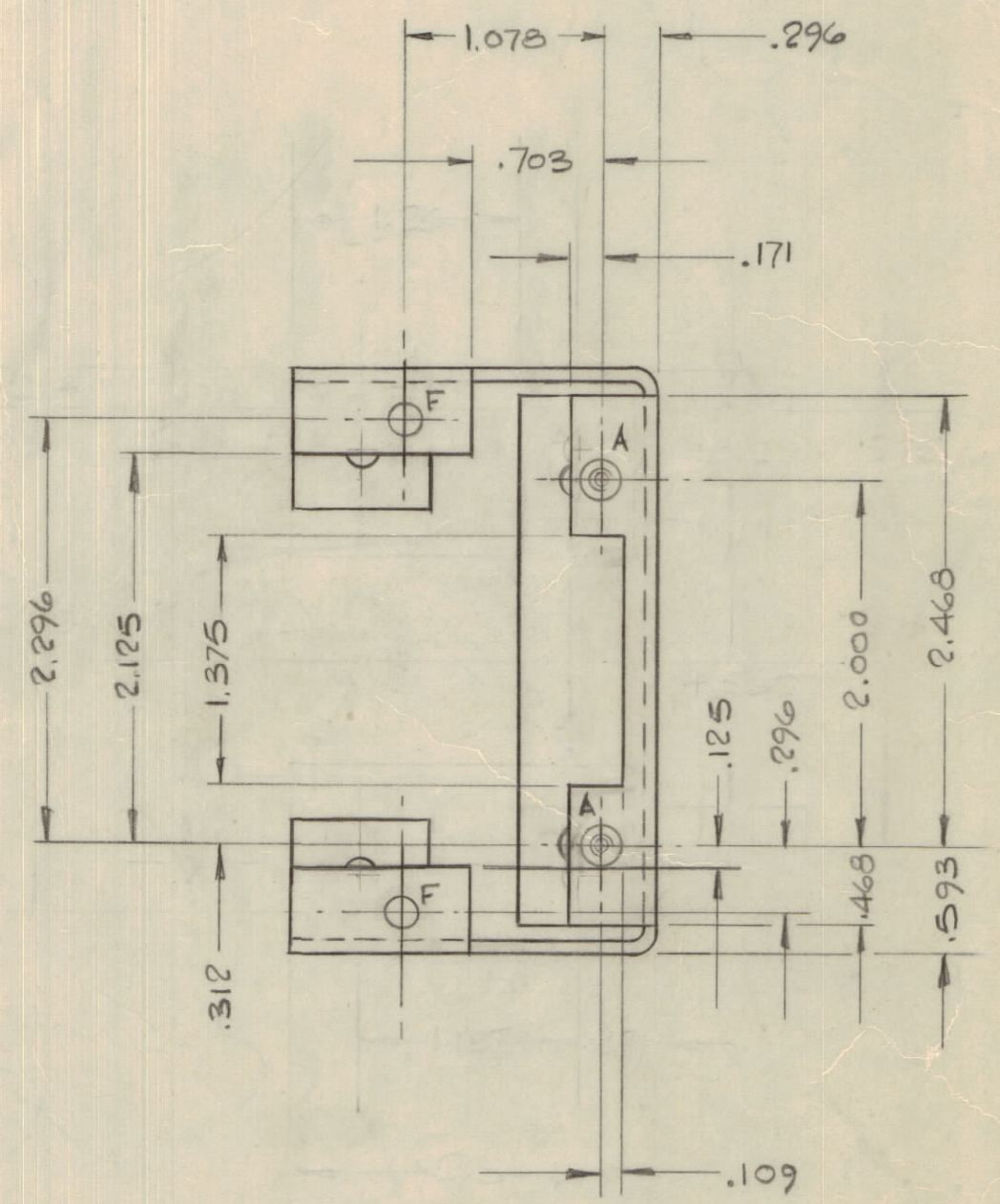
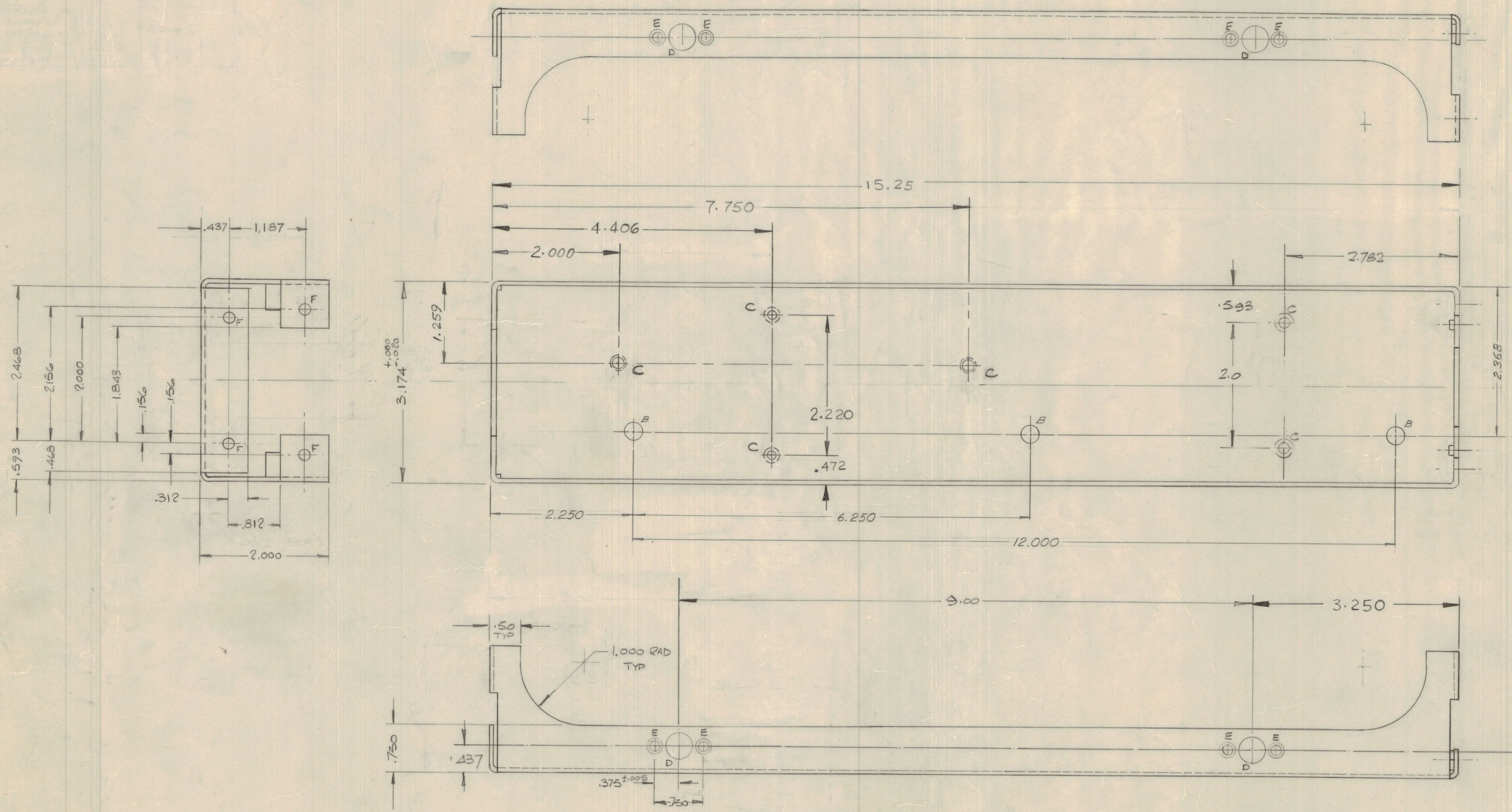


IF IT IS FOUND DESIRABLE TO CHANGE ANY TOLERANCE OR OTHER DETAIL SPECIFIED ON THIS DRAWING NOTIFY THE PURCHASER PROMPTLY.				DIMENSIONS IN INCHES UNLESS OTHERWISE SPECIFIED			
MAXIMUM ALLOWABLE TOLERANCES HAVE BEEN DETERMINED AND DEVIATIONS WILL BE CAUSE FOR REJECTION REMOVE ALL BURRS AND SHARP EDGES.				OTHERWISE SPECIFIED			
ISSUE	ITEM	CHANGED FROM	DATE	CN. NO.	DRAFTS	CHECKER	ENG. APP.
Ø		REL TO PROD	MAR 6 1968		AP		
A		REV PER CEMU	OCT 2 72	1196	C.C.		
B		REV PER EMN	APRIL 7 1971	21524	N.B.		K.P.
C		NOTE: NO LONGER REQ'D ADD	NOV 15 77	21728	GOL		

MS 10347-2 C
SHEET 2 OF 2

REQ	ITEM	PART NO.	DESCRIPTION	USED ON	REMARKS
2	1	MT 10002-2	MW. FASTENER SELF-LOCK		'A' HOLES
3	2	MT 129-1032-4	MUT ROUND SWAGE		'B' HOLES



NOTE -
NO LONGER REQUIRED
REPLACED BY MS 6971

HOLE DETAILS ~

DEF	QTY	DETAIL
A	2	.213/.216 DIA
B	3	.250 DIA
C	6	.171 DIA CSK TO .281 x 82°
D	4	.375 DIA
E	8	.101 DIA BORE .218 DIA X .025 DP.
F	6	.171 DIA

1. ALL BENDS .062 INT RAD

NOTE

TOLERANCES UNLESS OTHERWISE SPECIFIED	SCALE: 1/1
ALL DEC DIM ±.015	DRILL PUNCH COMMERCIAL STOCK
OTHERS FRACTIONAL DIM ±.01	SIZES AND MANUFACTURERS
ANGULAR DIM ± 0° 30'	TOLERANCES ARE NOT INCLUDED

MODEL	PROJECT NO.	ASS'Y. NO.	DATE
AMC 33	074/69		18 NOV 1968

STOCK SIZE: .062 THICK

TMC (Canada) LIMITED
OTTAWA ONTARIO

MATERIAL: ALUM. ALLOY
WEIGHT PER PC: 575-314

TYPE & TEMPER: BARTLETT

HEAT TREAT SPEC: 1R1DITE S404

CHECKED: [Signature]

FINISH & SPEC. NO.: SHEET 2 OF 2 MS 10347-2 C