

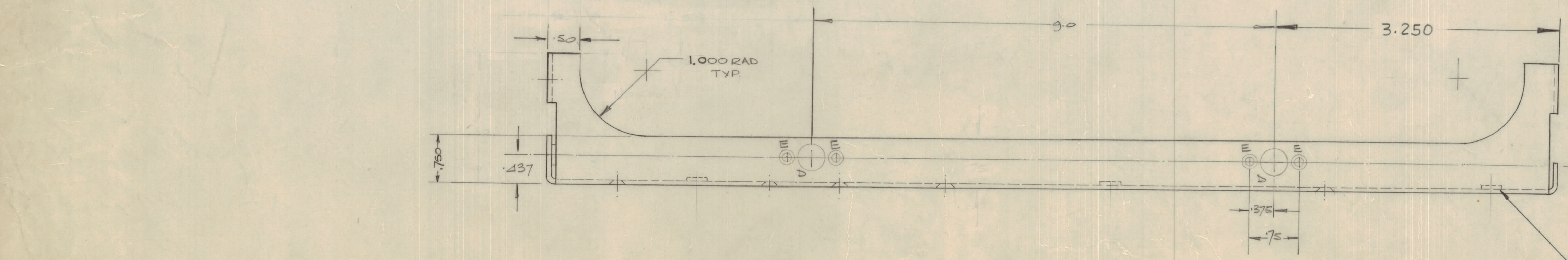
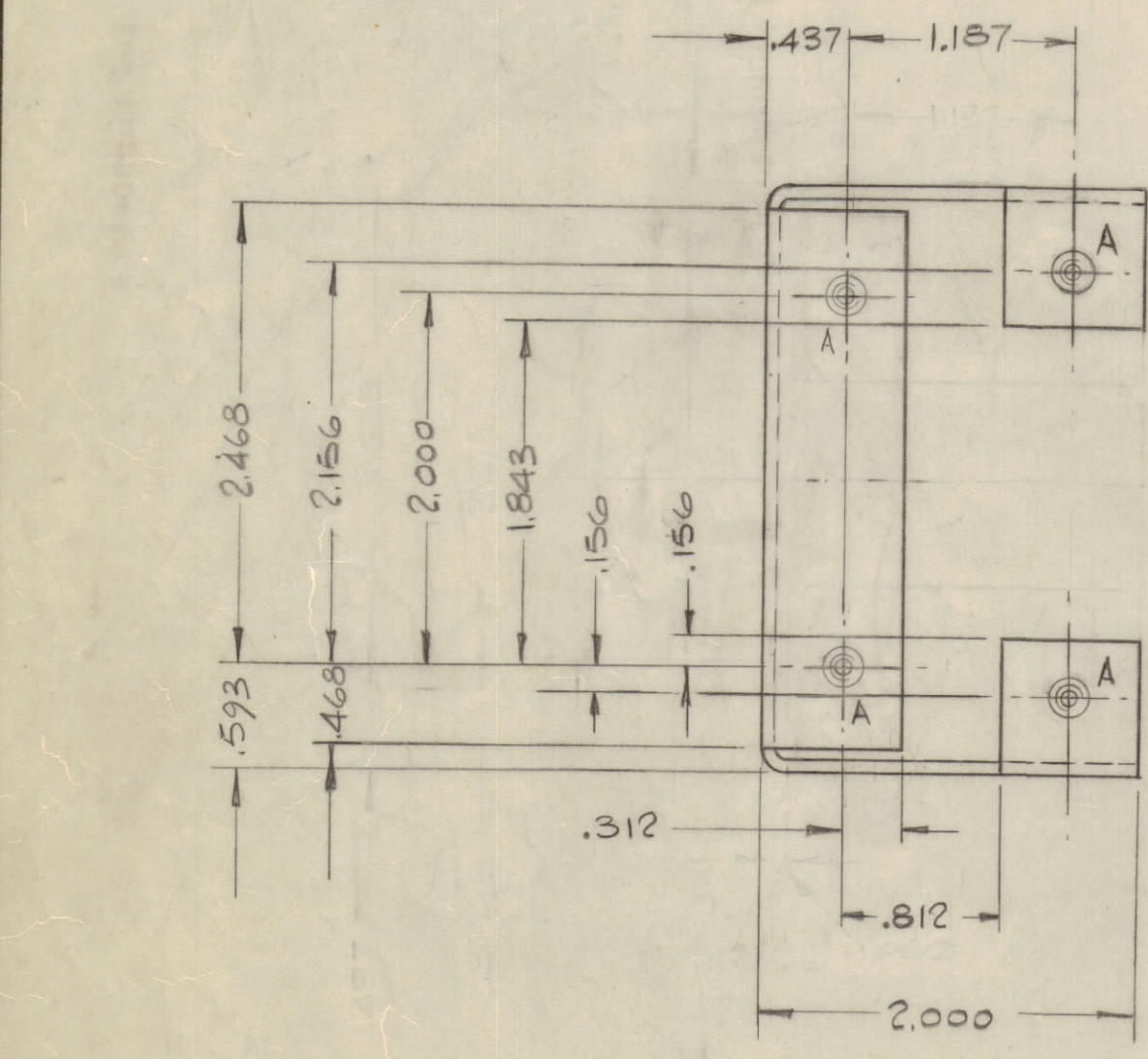
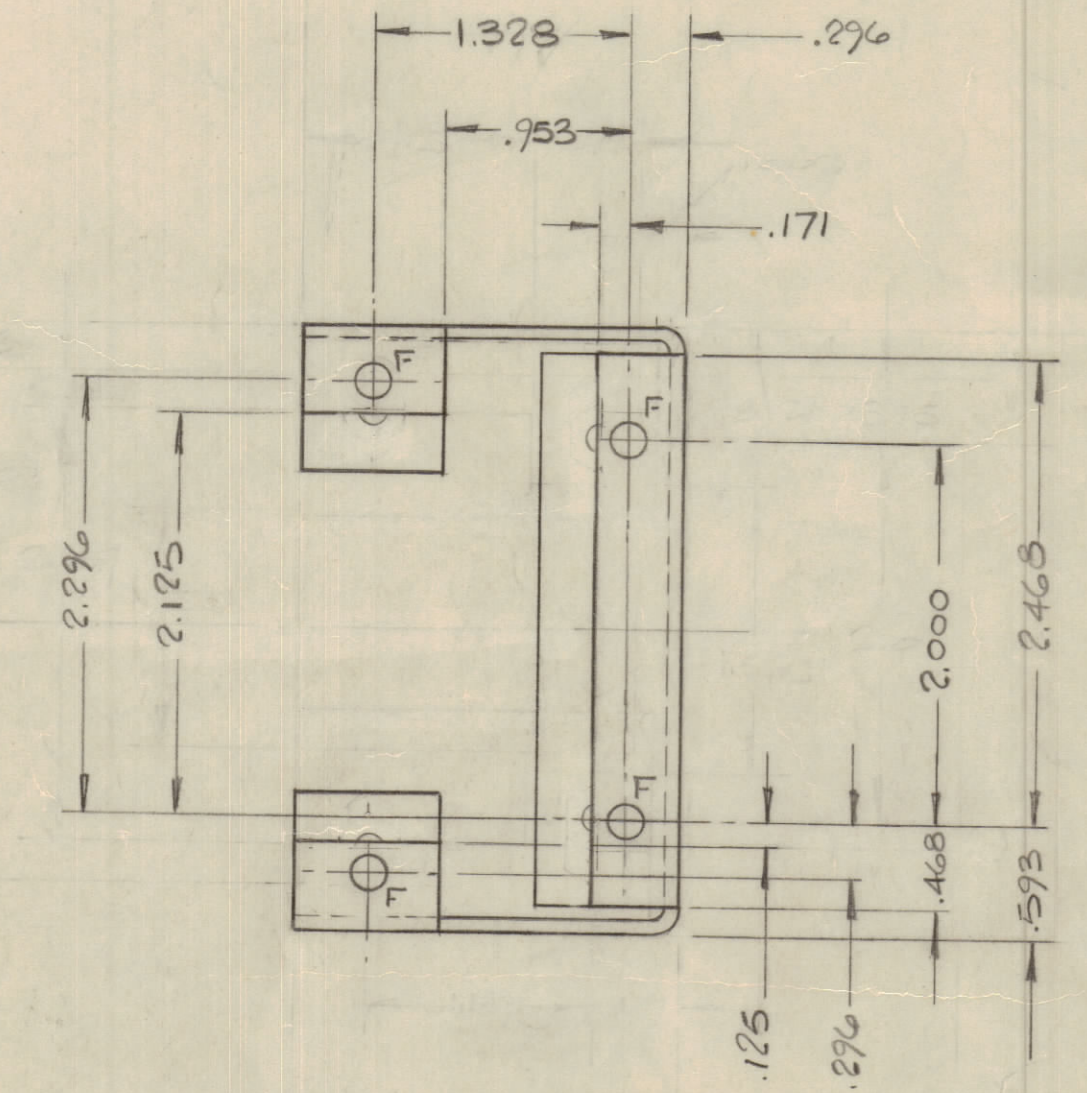
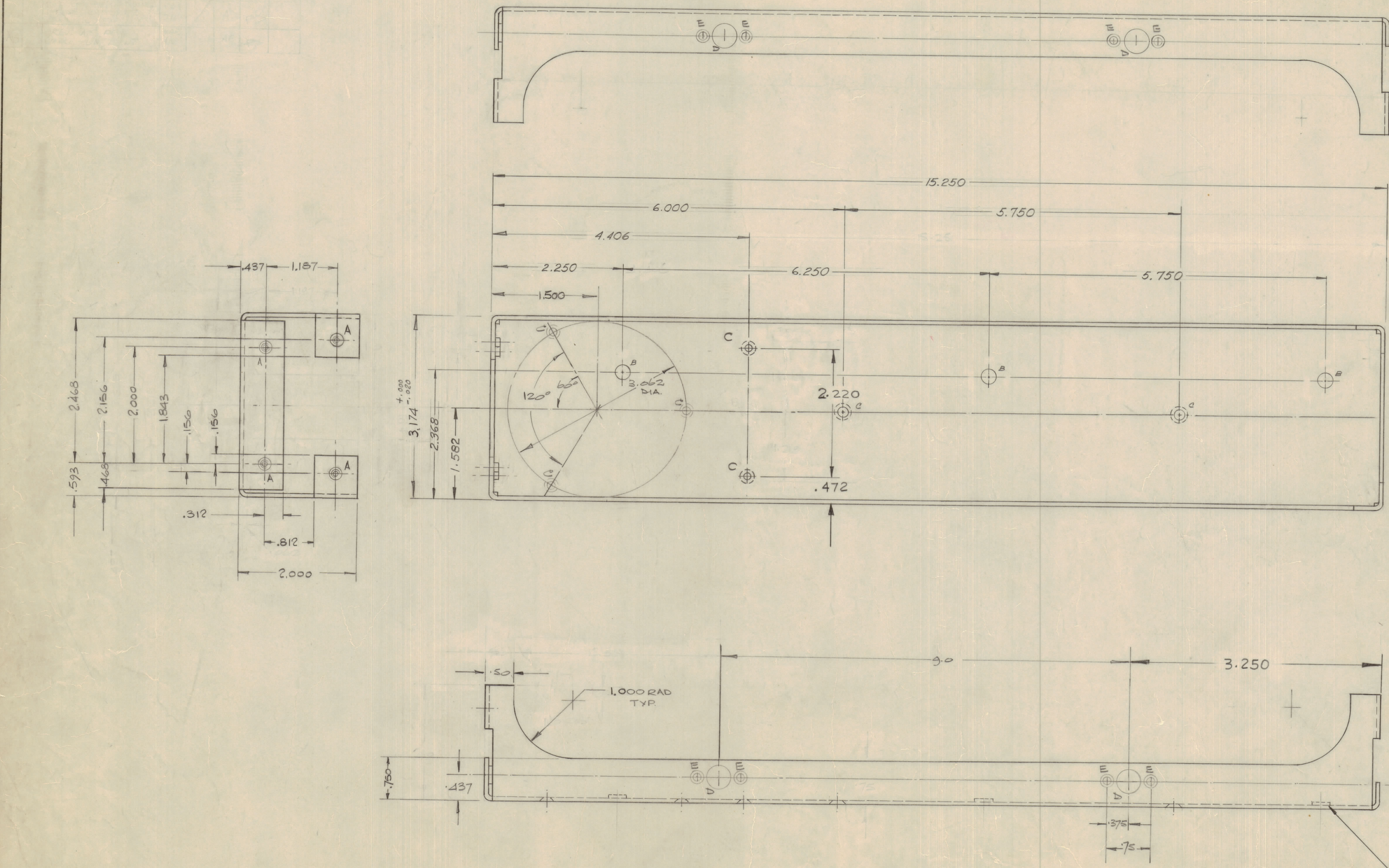
IF IT IS FOUND DESIRABLE TO CHANGE ANY TOLERANCE OR OTHER DETAIL SPECIFIED ON THIS DRAWING NOTIFY THE PURCHASER PROMPTLY.  
 MAXIMUM ALLOWABLE TOLERANCES HAVE BEEN DETERMINED AND DEVIATIONS WILL BE CAUSE FOR REJECTION. REMOVE ALL BURRS AND SHARP EDGES.

DIMENSIONS IN INCHES UNLESS OTHERWISE SPECIFIED

MS 10347-1 C  
 SHEET 1 OF 2

REQ	ITEM	PART NO.	DESCRIPTION	USED ON	REMARKS
1	1	MT-10002-2	MIN. FASTENER, SELF/LOCK		A HOLES
3	2	MT-129-1032-4	MIN. ROUND SWAGE		B HOLES

ISSUE	ITEM	CHANGED FROM	DATE	CN. NO.	DRAFTS	CHECKER	ENG APP.
Ø		REL TO PROD	MAR 68			AP	
A		REV PER CEMU	MAR 72	1196	CC		Agg
B		REVISED PER ENN	APR 73	21529	W.B.		RP
C		NOTE: NO LONGER REQ'D ADD	1-5-79	21728	GDL		MC



HOLE DETAILS ~

DEF	Nº	DETAIL
A	4	.213 / .216 DIA
B	3	.250 DIA.
C	7	.171 DIA CSK TO .281 x 82°
D	1	.375 DIA
E	3	.101 DIA C'BORE .218 x .025 DP
F	4	.171 DIA.

NOTE:  
 NO LONGER REQUIRED  
 REPLACED BY MS6972

2. INSTALL AFTER FINISHING
1. ALL BENDS .062 INT RAD
- NOTES

TOLERANCES UNLESS OTHERWISE SPECIFIED	SCALE: 1/1
ALL DEC DIM ± .015 → X-05	DRILL, PUNCH, COMMERCIAL STOCK
OTHERS FRAC DIM ± .005 → XX-01	SIZES AND MANUFACTURERS
ANGULAR DIM ± 0° 30' → XXX-005	TOLERANCES ARE NOT INCLUDED

MODEL	PROJECT NO.	ASS'Y NO.	DATE
AMC 32	07A/69		6 NOV 1968

1064 THICK STOCK SIZE  
 ALUM. ALLOY MATERIAL WEIGHT PER PC  
 57 S - H 34 TYPE & TEMPER

TMC (Canada) LIMITED  
 OTTAWA ONTARIO  
 SIDE MEMBER, LEFT HAND

DRAWN: BARTLETT  
 ELEC. DES. APP: [Signature]  
 MECH. DES. APP: [Signature]

HEAT TREAT SPEC. CHECKED: [Signature]  
 FINAL APPROVAL: [Signature]

FINISH & SPEC. NO. JDATE \$404 SHEET 1 OF 2 MS 10347-1 C