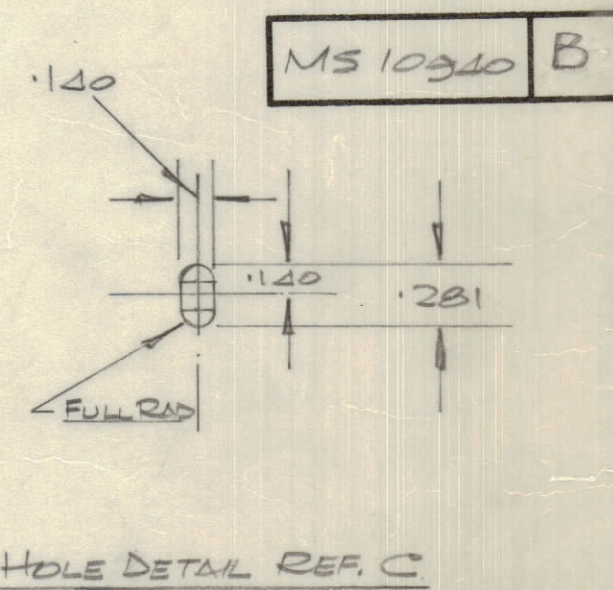
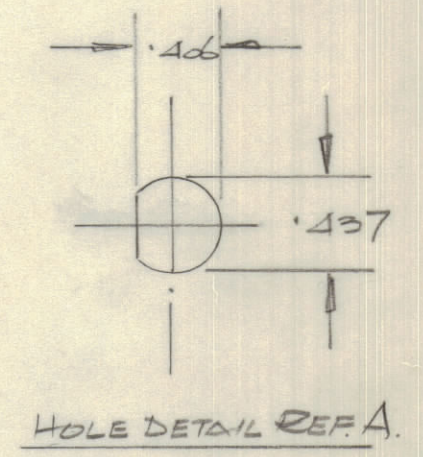
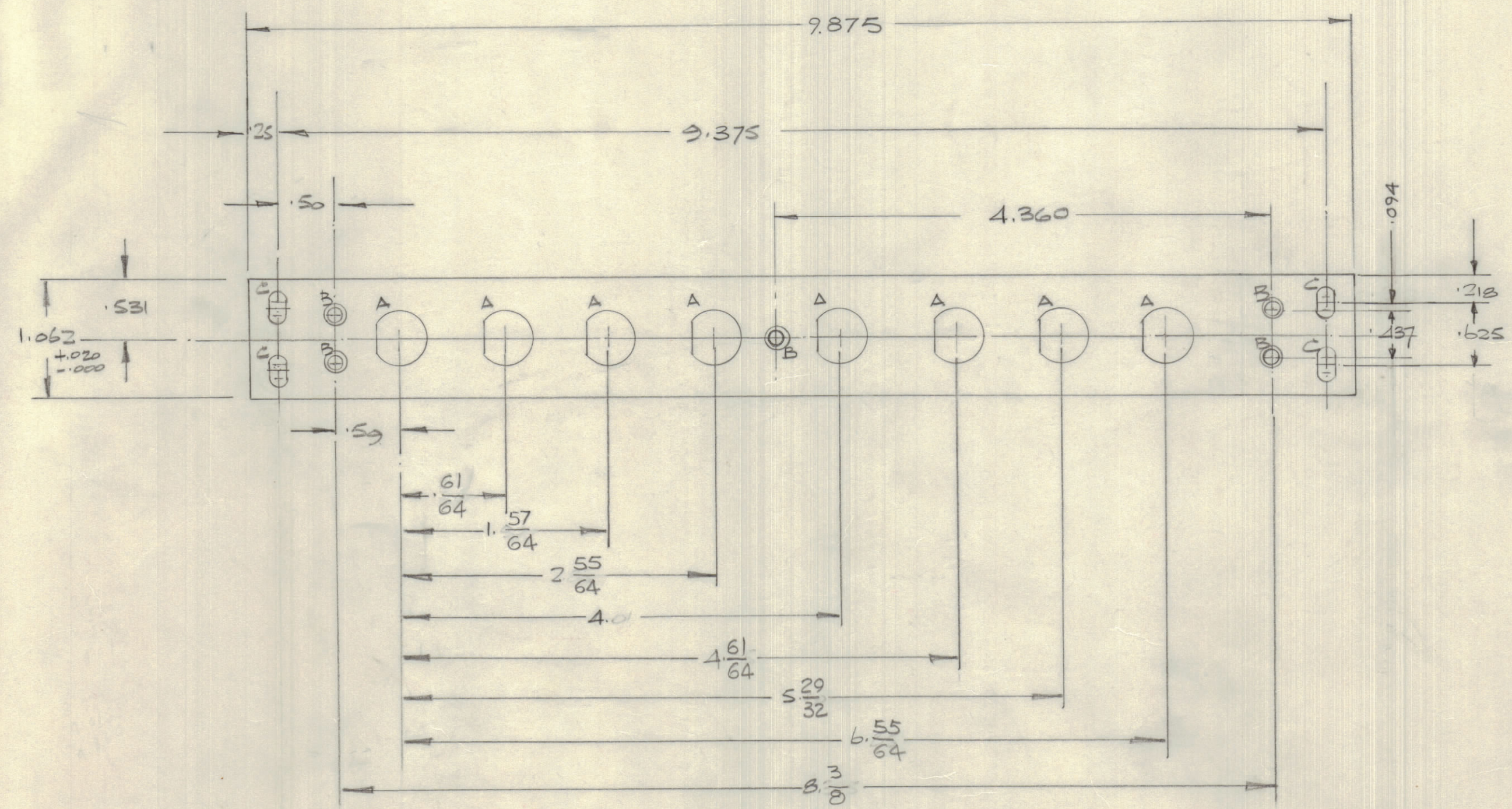


IF IT IS FOUND DESIRABLE TO CHANGE ANY TOLERANCE OR OTHER DETAIL SPECIFIED ON THIS DRAWING NOTIFY THE PURCHASER PROMPTLY.

MAXIMUM ALLOWABLE TOLERANCES HAVE BEEN DETERMINED AND DEVIATIONS WILL BE CAUSE FOR REJECTION. REMOVE ALL BURRS AND SHARP EDGES.

| ISSUE | ITEM | CHANGED FROM | DATE | CH. NO. | DRAFTS | CHECKER | ENG. APP. |
|-------|------|-----------------------|------------|---------|--------|---------|--------------------|
| Ø | | REL TO PROD | NOV 29/68 | | AP | | <i>[Signature]</i> |
| A | | CHANGED PER CEMN | 7 DEC 1968 | 413 | B | | <i>[Signature]</i> |
| B | | "B" HOLE WAS .133 DIA | DEC 5 '79 | 21761 | CDL | | F.P. |



HOLE DETAILS ~

| REF. N° | DETAIL |
|---------|---------------------------------|
| A | B SEE DETAIL |
| B | B .120 DIA CSHK 82° TO .230 DIA |
| C | 4 SEE DETAIL |

NO LONGER REQ'D
USE FOR SPARE PART ONLY

REF. LD 10312

TOLERANCE ~
± .015 UNLESS
OTHERWISE STATED

| | | | | | |
|--------------------|--|---------------|--|--|--|
| .062 THICK | | STOCK SIZE | | TMC (Canada) LIMITED OTTAWA ONTARIO | |
| ALUM. ALLOY | | MATERIAL | | PANEL, JACK | |
| 57S - H34 | | TYPE & TEMPER | | BARTLETT | |
| HEAT TREAT. SPEC. | | DRAWN | | ELEC. DES. APP. | |
| IRIDITE S404 | | CHECKED | | FINAL APPROVAL | |
| FINISH & SPEC. NO. | | MS 10340 | | B | |

| | | |
|---------------|-------------|-------------|
| AMC 8 50275 Ω | LD 10312 | 10 OCT 1968 |
| MODEL | PROJECT NO. | DATE |

| | | |
|------------|--|---|
| TOLERANCES | | SCALE: FULL |
| ALL OTHERS | DEC. DIM. ± 1/64 FRAC. DIM. ± 1/64 ANGULAR DIM. ± 0° 30' | DRILL, PUNCH, COMMERCIAL STOCK SIZES AND MANUFACTURERS TOLERANCES ARE NOT INCLUDED. |