

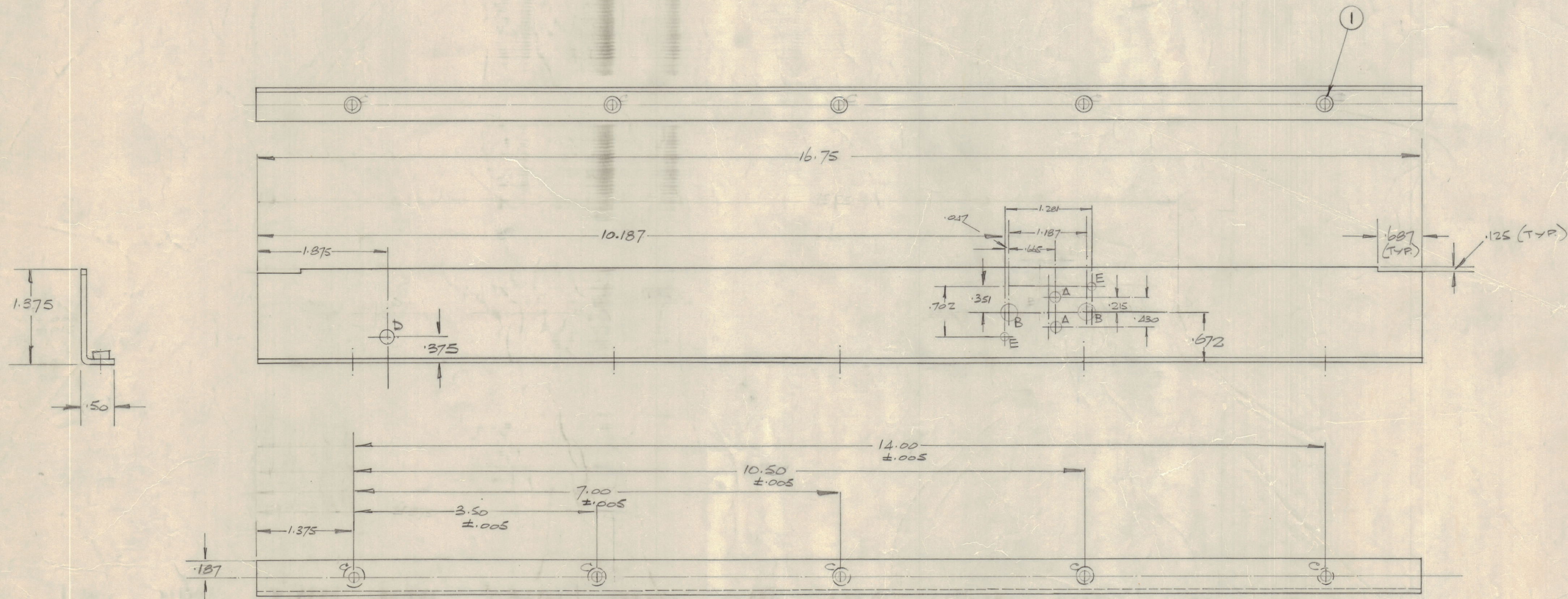
IF IT IS FOUND DESIRABLE TO CHANGE ANY TOLERANCE OR OTHER DETAIL SPECIFIED ON THIS DRAWING NOTIFY THE PURCHASER PROMPTLY.

MAXIMUM ALLOWABLE TOLERANCES HAVE BEEN DETERMINED AND DEVIATIONS WILL BE CAUSE FOR REJECTION. REMOVE ALL BURRS AND SHARP EDGES.

ISSUE	ITEM	CHANGED FROM	DATE	CN. NO.	DRAFTS	CHECKER	ENG. APP.
0		RELEASED TO PRODUCTION	DEC 21 1968		JB		
A		REV TO CEMN	DEC 7 1968	413	AP		
B		ITEM 1 ADD.	12-28-68				

MS 10937 A

REQ	ITEM	PART NO.	DESCRIPTION	SYMBOL
5	1	NT 129-0440	NUT, ROUND	C



HOLE DETAILS ~

REF. NO.	DETAIL
A	2 DRILL .162 DIA.
B	4 DRILL .218 DIA.
C	5 DRILL .164 DIA.
D	1 DRILL .312 DIA.
E	2 DRILL .103 DIA.

TOLERANCES
± .015 UNLESS
OTHERWISE STATED
BEND - .06 INT. RAD.

TOLERANCES UNLESS OTHERWISE SPECIFIED	SCALE: FULL
ALL DEC. DIM. ± .015	DRILL, PUNCH, COMMERCIAL STOCK
OTHERS FRACTIONAL DIM. ± .015	SIZES AND MANUFACTURERS
ANGULAR DIM. ± 0° 30'	TOLERANCES ARE NOT INCLUDED

.062 THICK	TMC (Canada) LIMITED		
STOCK SIZE	OTTAWA ONTARIO		
ALUM. ALLOY	SHIELD		
MATERIAL	WEIGHT PER PC	DRAWN	ELEC. DES. APP.
575 - H 31		SIMPSON	
TYPE & TEMPER	HEAT TREAT. SPEC.	CHECKED	FINAL APPROVAL
AMC B 50875-D	PROJECT NO. A10743	DATE 22 OCT 68	MS 10937 B
MODEL	ASS'Y. NO.	DATE	FINISH & SPEC. NO.