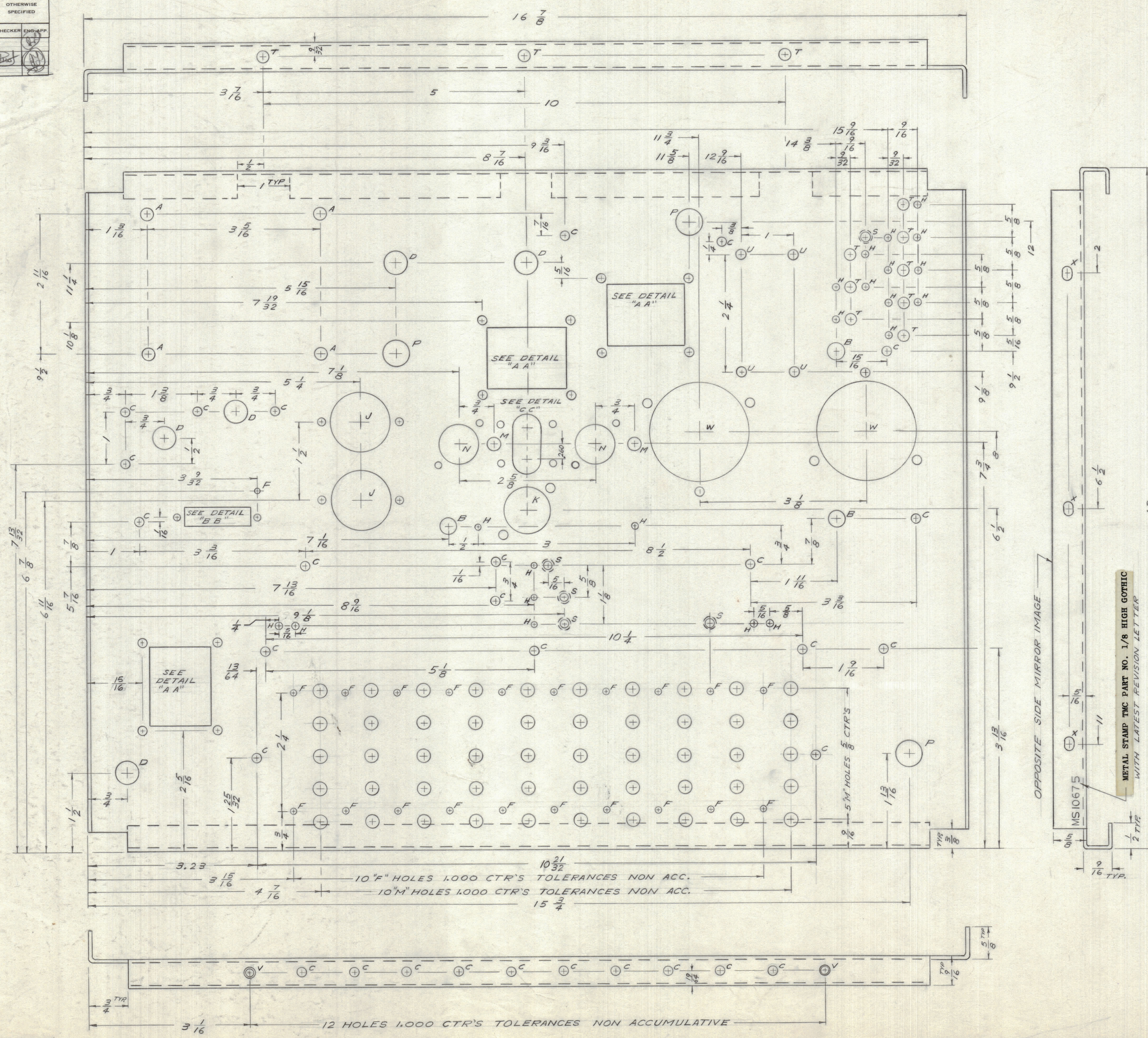
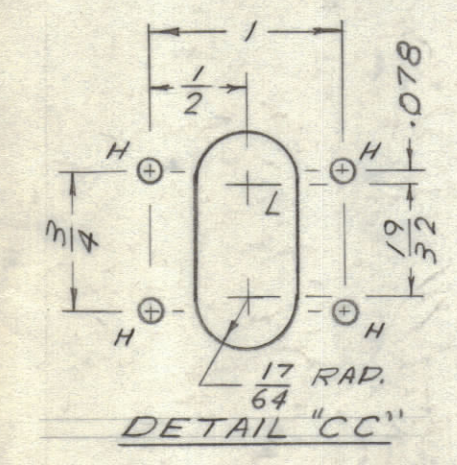
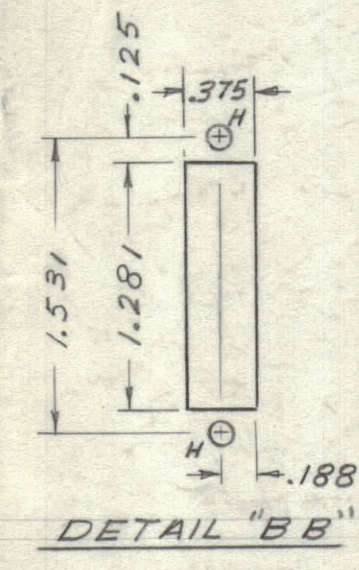
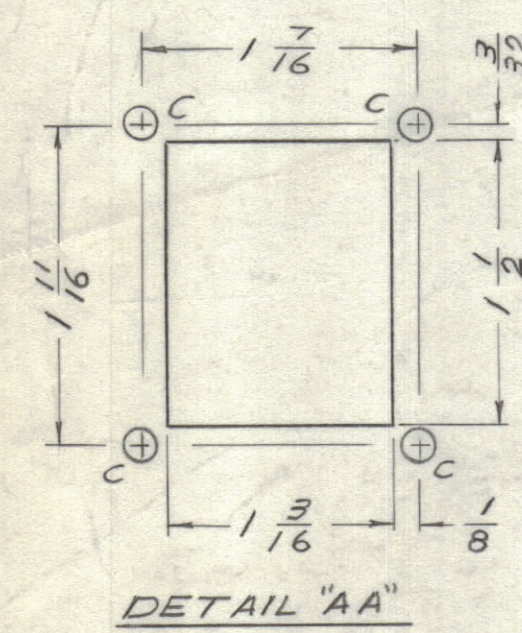


IF IT IS FOUND DESIRABLE TO CHANGE ANY TOLERANCE OR OTHER DETAIL SPECIFIED ON THIS DRAWING NOTIFY THE PURCHASER PROMPTLY.

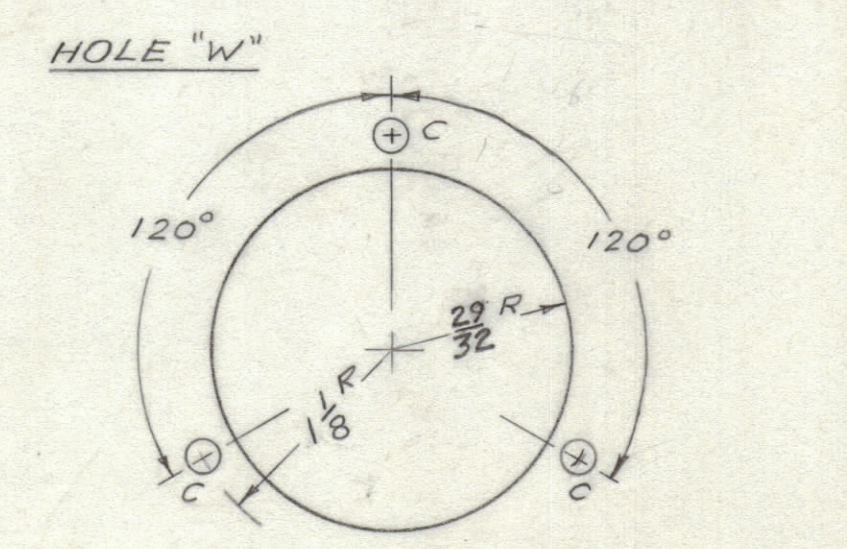
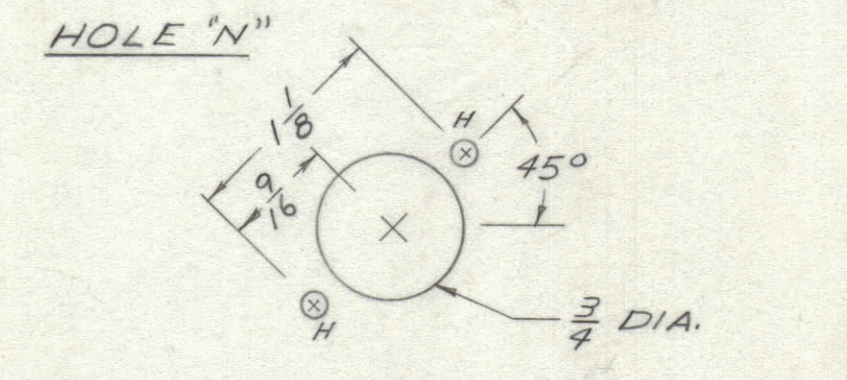
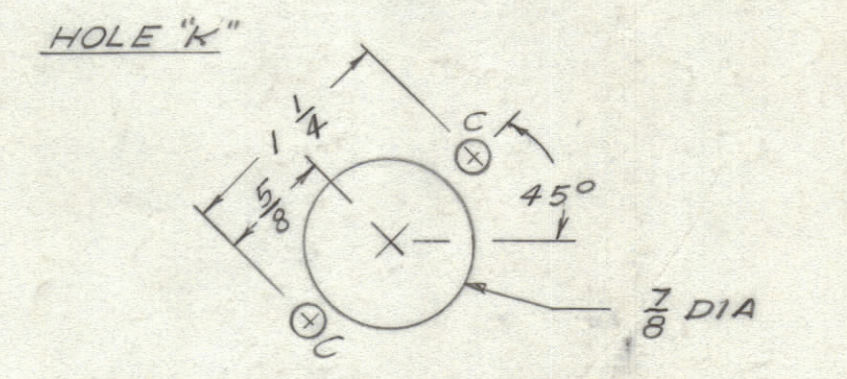
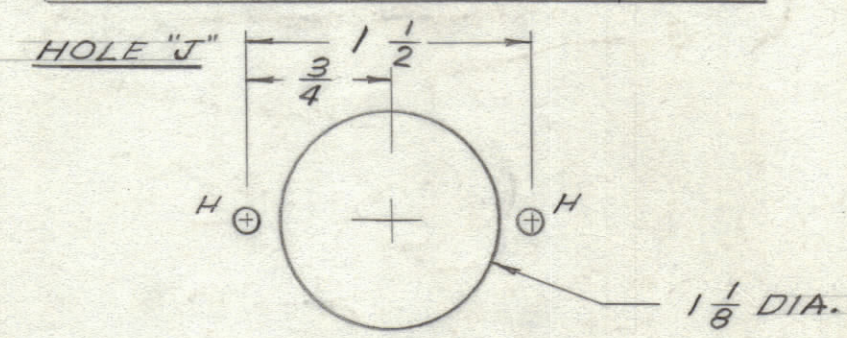
MAXIMUM ALLOWABLE TOLERANCES HAVE BEEN DETERMINED AND DEVIATIONS WILL BE CAUSE FOR REJECTION. REMOVE ALL BURRS AND SHARP EDGES.

ISSUE	ITEM	CHANGED FROM	DATE	CN. NO.	DRAFTS	CHECKER	ENGR/APP
0		RELEASED FOR PROD.	MARCH 1964				
A		27/32 WAS 13/16	MAY 10/64	CEMN	011	GM	
B		15/16 WAS 1 1/16	MAY 10/64	CEMN	011	RD	
		REV PER CEMN	22-11-66	131			

DIMENSIONS IN INCHES UNLESS OTHERWISE SPECIFIED



HOLE	DESCRIPTION	REQ
A	15/64 DIA.	4
B	5/16 DIA.	3
C	11/64 DIA.	49
D	3/16 DIA.	5
F	3/32 DIA.	17
H	1/8 DIA.	31
J	SEE DETAIL	2
K	SEE DETAIL	1
L	SLOT SEE DETAIL "CC"	1
M	1/4 DIA.	52
N	SEE DETAIL	2
P	1/2 DIA.	3
S	1/16 ± .002 CSK TO .175	5
T	13/64 DIA.	11
U	1/8 DIA.	4
V	1/8 DIA. CSK 4-40	2
W	SEE DETAIL	2
X	3/16 X 1/4 SLOT	6



OPPOSITE SIDE MIRROR IMAGE

Metal Stamp TMC Part No. 1/8 High Gothic with latest revision letter

- UNLESS OTHERWISE SPECIFIED:
- USE MATERIAL THICKNESS FOR MAXIMUM RADIUS ON ALL BENDS
 - ALL ANGULAR BENDS 90 DEGREES
 - REMOVE ALL BURRS AND SHARP EDGES
 - MOUNT INSERTS AFTER FINISHING

REF: LD10207

TOLERANCES		SCALE: 1:1
ALL OTHERS	DEC. DIM. ± .005 FRAC. DIM. ± 1/64 ANGULAR DIM. ± 0°30'	DRILL, PUNCH, COMMERCIAL STOCK SIZES AND MANUFACTURERS TOLERANCES ARE NOT INCLUDED

AMC 20-20	039/66	24 FEB 66
MODEL	PROJECT NO.	ASS'Y. NO. DATE

.064	STOCK SIZE	TMC (Canada) LIMITED
ALUM	MATERIAL	OTTAWA ONTARIO
575-H32	WEIGHT PER PC	MAIN CHASSIS
	TYPE & TEMPER	AMC 20-20
	HEAT TREAT SPEC.	RD
5404 YELLOW IRIDITE	FINISH & SPEC. NO.	MECH. DES. APP.
		ELEC. DES. APP.
		MECH. DES. APP.
		FINAL APPROVAL
		MS10675B