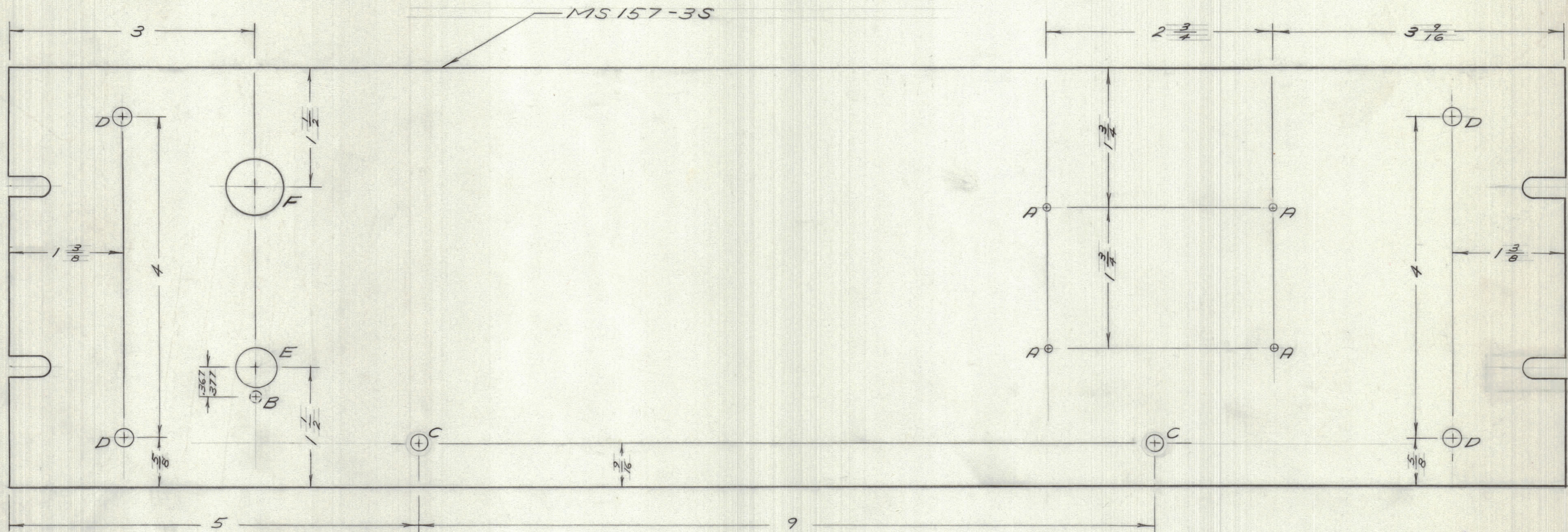


IF IT IS FOUND DESIRABLE TO CHANGE ANY TOLERANCE OR OTHER DETAIL SPECIFIED ON THIS DRAWING NOTIFY THE PURCHASER PROMPTLY.		DIMENSIONS IN INCHES UNLESS OTHERWISE SPECIFIED					
MAXIMUM ALLOWABLE TOLERANCES HAVE BEEN DETERMINED AND DEVIATIONS WILL BE CAUSE FOR REJECTION. REMOVE ALL BURRS AND SHARP EDGES.							
ISSUE	ITEM	CHANGED FROM	DATE	CN. NO.	DRAFTS	CHECKER	ENG. APP.
0		ORIGINAL RELEASE FOR Prod 4-3-65					

REQ.	ITEM	PART NO.	DESCRIPTION	SYMBOL
------	------	----------	-------------	--------



HOLE	DESCRIPTION	REQ.
A	NO. 47 DRILL	4
B	1/8 DIA: 1/8 DEEP FROM REAR	1
C	3/16 DIA	2
D	13/64 DIA	4
E	3/16 DIA	1
F	1/16 DIA	1

FINISH NOTE:
 5114 - ZINC CHROMATE PRIMER } FRONT &
 5115 - SMOOTH GREY ENAMEL } EDGES ONLY

REF: LD10184

TOLERANCES		SCALE:
ALL OTHERS	DEC. DIM. ± FRAC. DIM. ± ANGULAR DIM. ±	DRILL, PUNCH, COMMERCIAL STOCK SIZES AND MANUFACTURERS TOLERANCES ARE NOT INCLUDED.

BAA-2	023/65	A10358	5-1-65
MODEL	PROJECT NO.	ASSY. NO.	DATE
USED ON			

STOCK SIZE		TMC (Canada) LIMITED OTTAWA ONTARIO	
MATERIAL			
WEIGHT PER PC.		MACHINING FRONT	
TYPE & TEMPER		PANEL	
HEAT TREAT. SPEC.		RD	
DRAWN		ELEC. DES. APP.	MECH. DES. APP.
CHECKED		FINAL APPROVAL	
FINISH & SPEC. NO.		MS10581	