

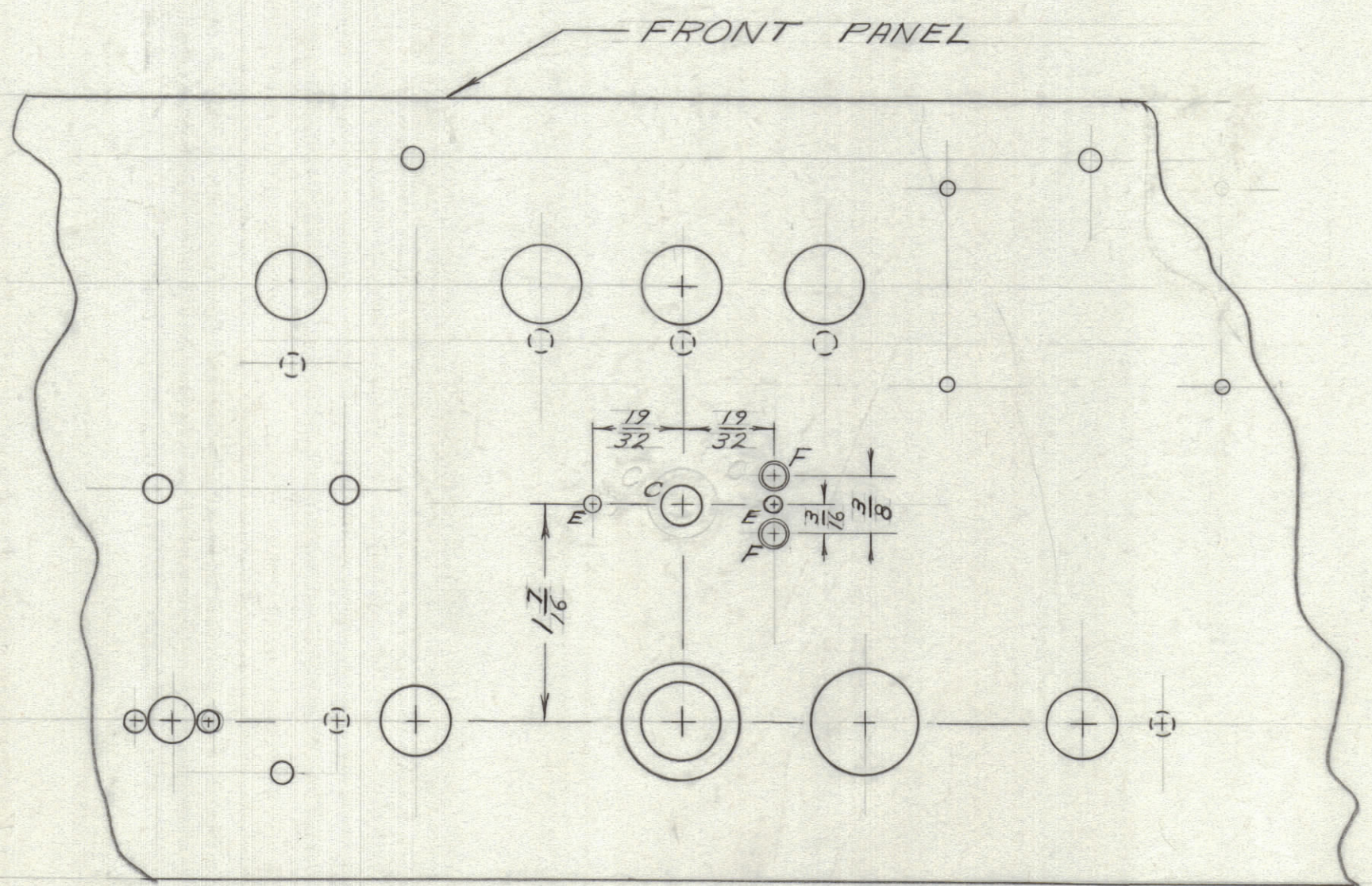
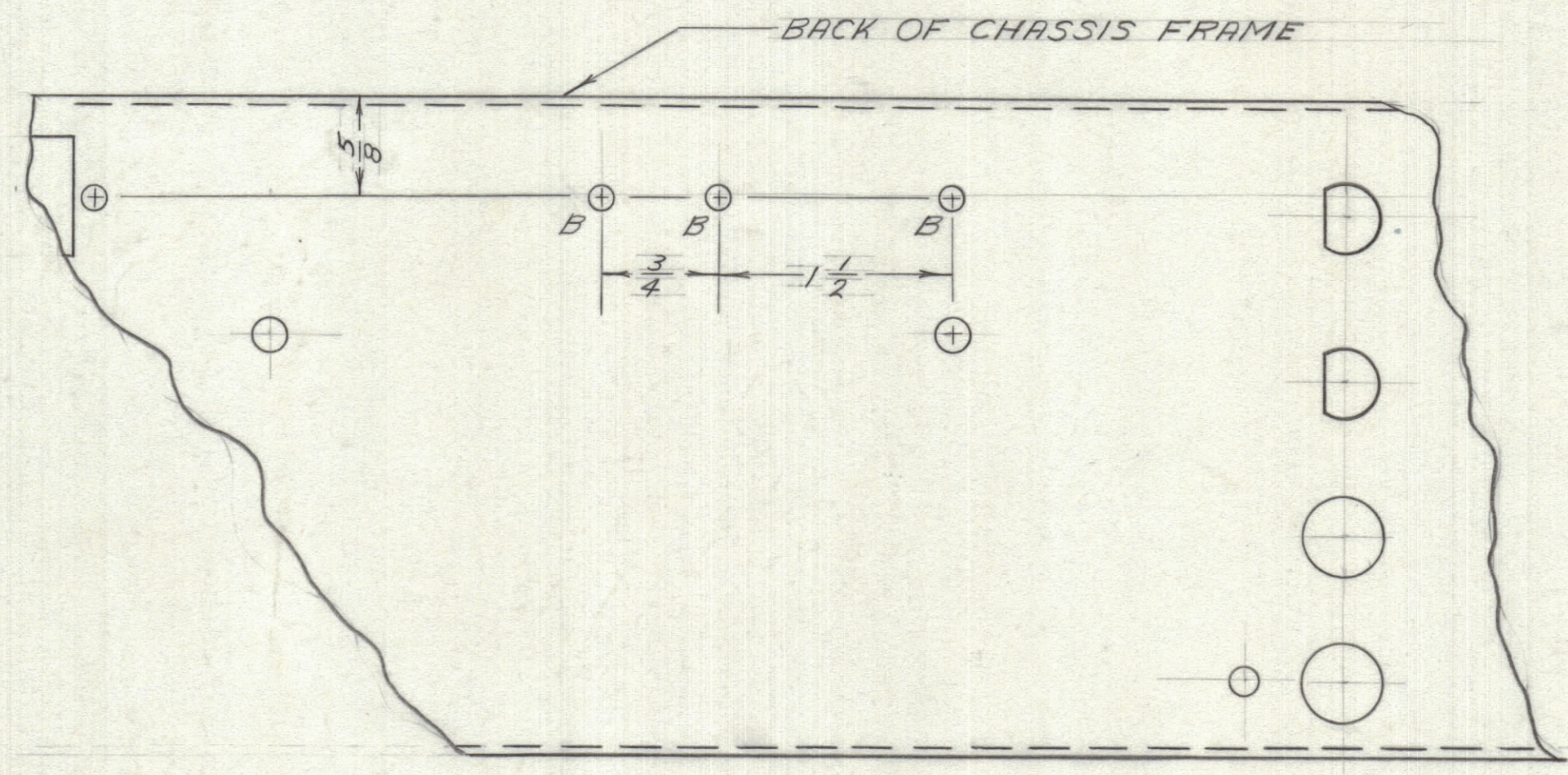
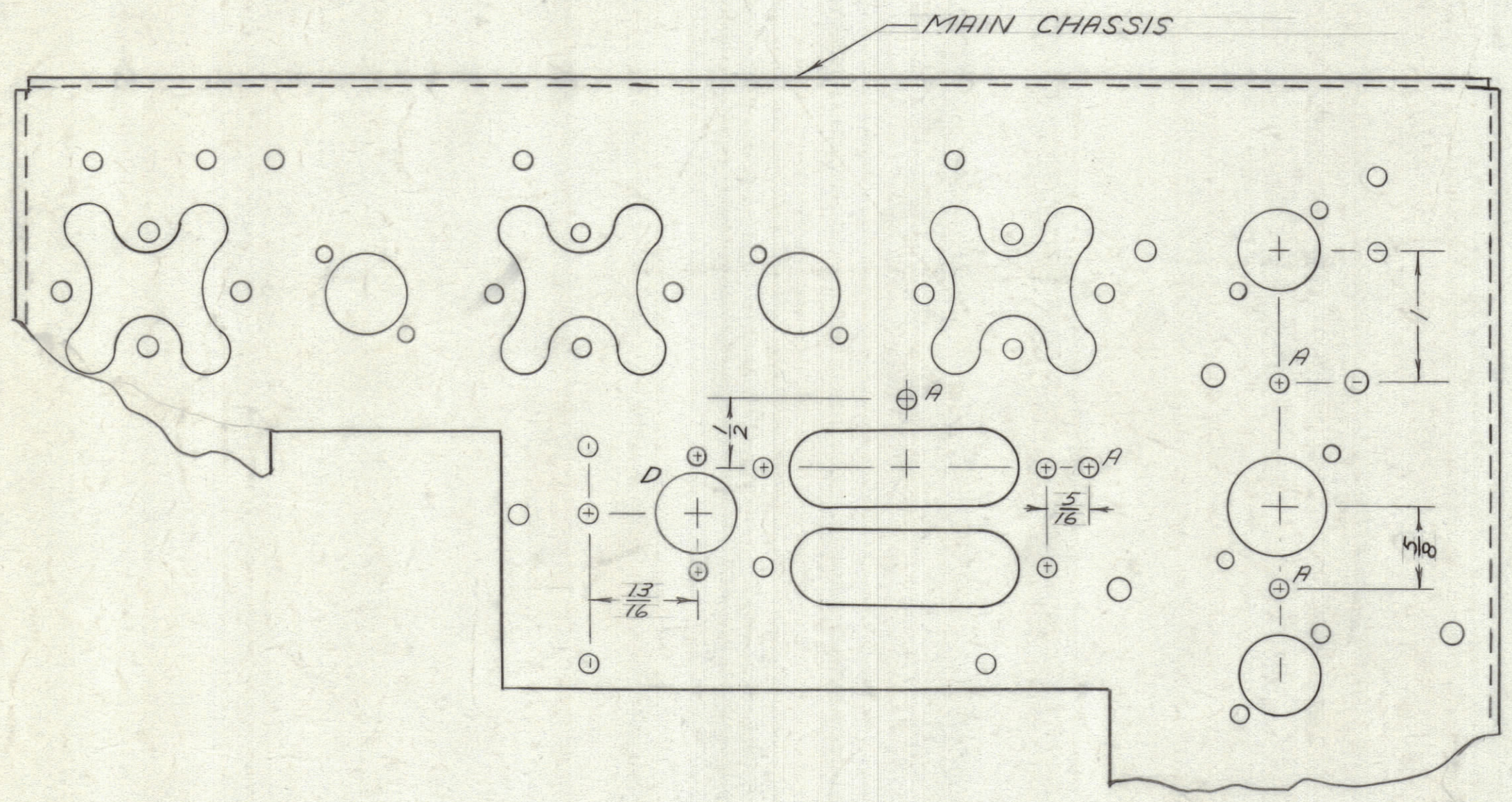
IF IT IS FOUND DESIRABLE TO CHANGE ANY TOLERANCE OR OTHER DETAIL SPECIFIED ON THIS DRAWING NOTIFY THE PURCHASER PROMPTLY.

MAXIMUM ALLOWABLE TOLERANCES HAVE BEEN DETERMINED AND DEVIATIONS WILL BE CAUSE FOR REJECTION. REMOVE ALL BURRS AND SHARP EDGES.

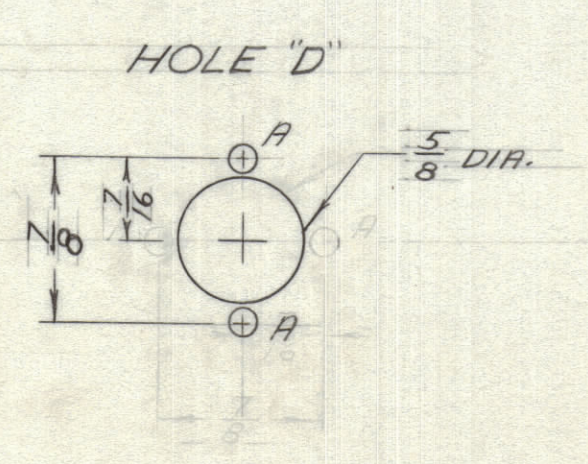
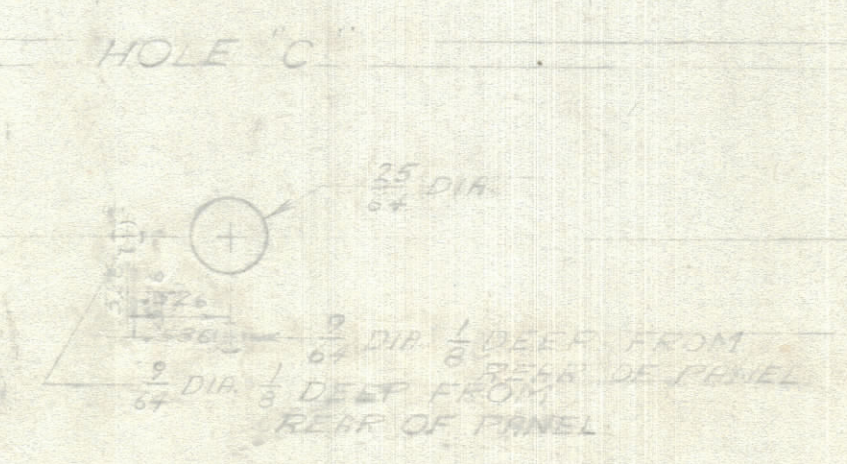
ISSUE ITEM CHANGED FROM DATE CN. NO. DRAFTS CHECKER ENG. APP.

DIMENSIONS IN INCHES UNLESS OTHERWISE SPECIFIED

REQ. ITEM PART NO. DESCRIPTION SYMBOL



HOLE	DESCRIPTION	REQ
A	1/8 DIA	6
B	3/16 DIA	3
C	1/4 DIA	1
D	SEE DETAIL	1
E	3/32 DIA	2
F	#25 DRILL (1495) C'SK FOR 632 SCREW	2



REF: S-10073

TOLERANCES		SCALE:
ALL DEC. DIM. ±	DRILL, FUNCH, COMMERCIAL STOCK SIZES AND MANUFACTURERS TOLERANCES ARE NOT INCLUDED.	
OTHERS FRAC. DIM. ±		
ANGULAR DIM. ±		

MODEL	PROJECT NO.	ASS'Y. NO.	DATE
			10-6-64

STOCK SIZE		TMC (Canada) LIMITED OTTAWA ONTARIO	
MATERIAL		CONVERSION OF "FFR-3"	
WEIGHT PER PC		TO "FFR-3S"	
TYPE & TEMPER		R.DES.	M.DES.
DRAWN		ELEC. DES. APP.	MECH. DES. APP.
HEAT TREAT SPEC.		CHECKED	
FINISH & SPEC. NO.		FINAL APPROVAL	
		MS10572	