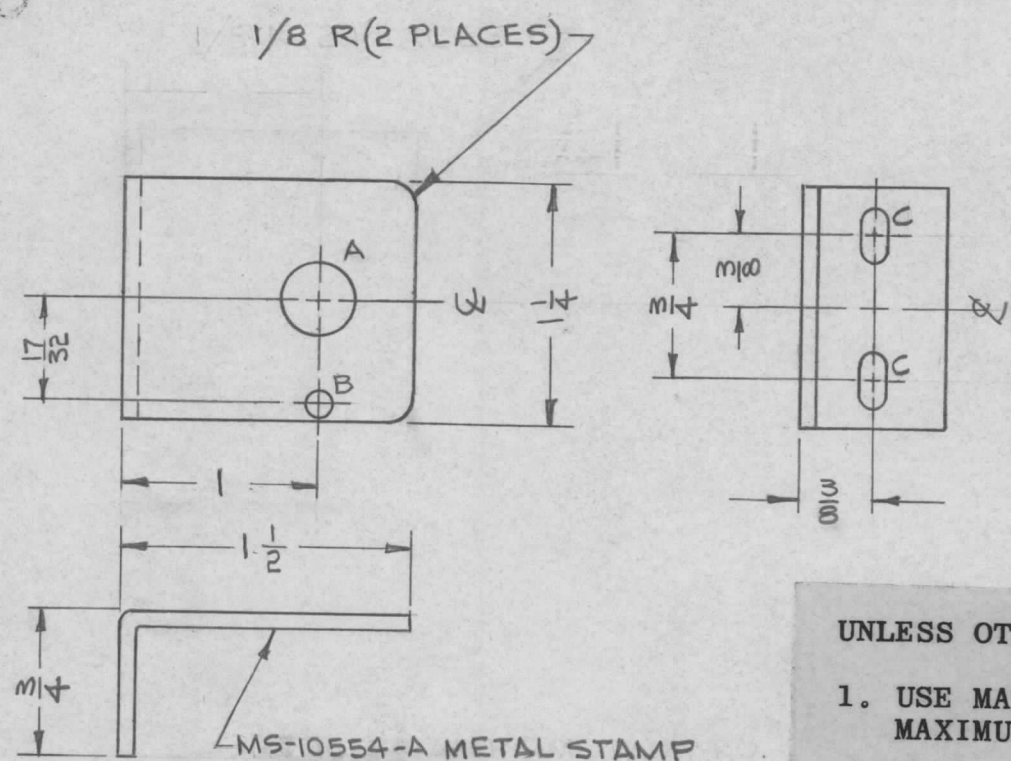


REQ. PER UNIT	USED ON			MS-10554	A
	MODEL	ASS'Y. NO.	DATE		
1	AMC6-2 & -3		9-23-63		



HOLE	DESCRIPTION	REQ'D
A	.375 DIA	1
B	9/64 DIA	1
C	9/64 x 9/32 SLOT	2

MS-10554-A METAL STAMP  
TMC PART NO. 1/8 HIGH  
GOTHIC, ON INSIDE  
AS SHOWN.

UNLESS OTHERWISE SPECIFIED:

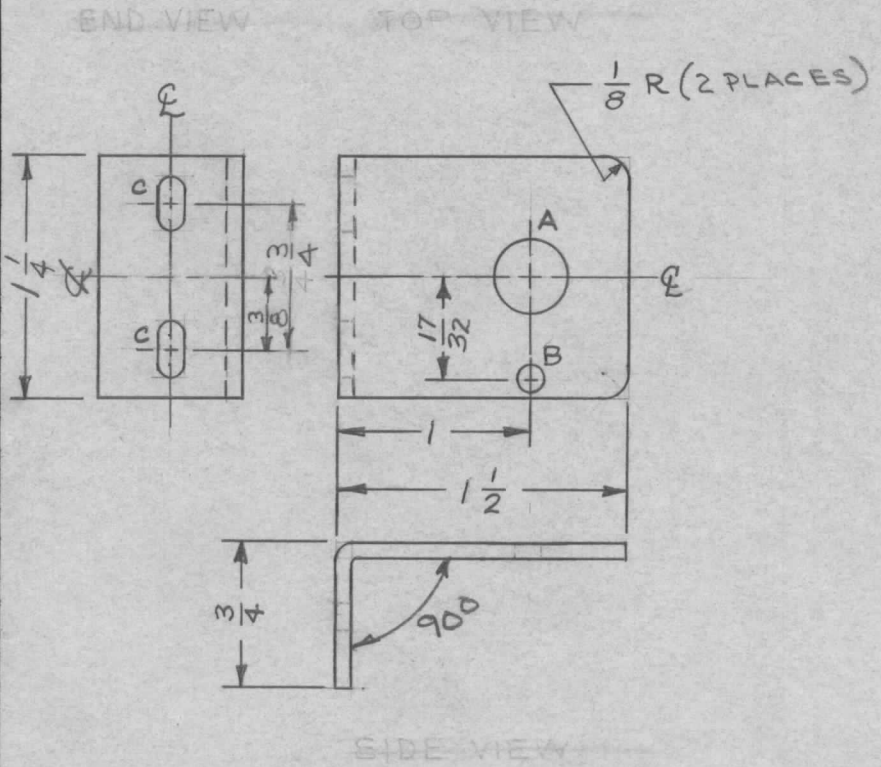
1. USE MATERIAL THICKNESS FOR MAXIMUM RADIUS ON ALL BENDS.
2. ALL ANGULAR BENDS 90°.
3. REMOVE ALL BURRS AND SHARP EDGES.

REF: LD-10168-A

REQ. ITEM	PART NO.	CANADA DESCRIPTION		SYMBOL
	.081 THK STOCK SIZE	THE TECHNICAL MATERIEL CORP. MAMARONECK. NEW YORK		
A	REDRAWN, MARKING NOTES ADDED	BRACKET, SUPPORT, BIAS POTENTIOMETER		
SYM	DESCRIPTION	DATE	CH. NO.	DRAFTS
		10/31/63	10327	1/1
				CHECKER
				ENG. APP.
UNLESS OTHERWISE SPECIFIED DIMENSIONS ARE IN INCHES AND INCLUDE CHEMICALLY APPLIED OR PLATED FINISHES		SCALE		
		1/1		
DECIMALS	FRACTIONS	CODE		
.X ± .05	± 1/64			
.XX ± .01	ANGLES			
.XXX ± .005	± 0° 30'			
TOLERANCES				
5052H32				
TYPE & TEMPER	HEAT TREAT. SPEC.	DRAWN	CHECKED	FINAL APPROVAL
S-404 YEL IRIDITE				
FINISH & SPEC. NO.		ELEC. DES. APP.	MECH. DES. APP.	
		MS-10554		A

THE CONTENTS OF THIS DRAWING ARE THE EXCLUSIVE PROPERTY OF THE TECHNICAL MATERIEL CORP. ITS UNAUTHORIZED USE FOR REPRODUCTION IN WHOLE OR IN PART IS STRICTLY FORBIDDEN.

REQ. PER UNIT 1	USED ON			MS-10554
	MODEL	ASS'Y. NO.	DATE	
AMC 6-2&3		4-4-63		



HOLE DATA

- A - .375 DIA. - 1 REQ
- B - 9/64 DIA. - 1 REQ
- C - 9/64 X 9/32 SLOT - 2 REQ

REF. LD-10168

							REQ. ITEM	PART NO.	DESCRIPTION	SYMBOL	
							.081 GA. ET		THE TECHNICAL MATERIEL CORP. MAMARONECK, NEW YORK		
							STOCK SIZE				
							ALUMINUM		BRACKET, SUPPORT		
							MATERIAL		(BIAS POTENTIOMETER)		
SYM	DESCRIPTION	DATE	CH. NO.	DRAFTS	CHECKER	ENG. APP.	575 1/4 HARD		M.J. TANTILLO <i>HDe</i>	<i>BP</i>	
UNLESS OTHERWISE SPECIFIED DIMENSIONS ARE IN INCHES AND INCLUDE CHEMICALLY APPLIED OR PLATED FINISHES		SCALE	1:1					TYPE & TEMPER	HEAT TREAT. SPEC.	DRAWN	CHECKED
DECIMALS .X ± .05 .XX ± .01 .XXX ± .005	TOLERANCES	FRACTIONS ± 1/64 ANGLES ± 0° 30'	CODE					S 404 YELLOW IRIDITE			
							FINISH & SPEC. NO.	ELEC. DES. APP.	MECH. DES. APP.	MS-10554	