

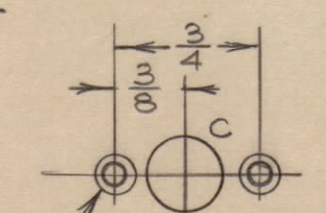
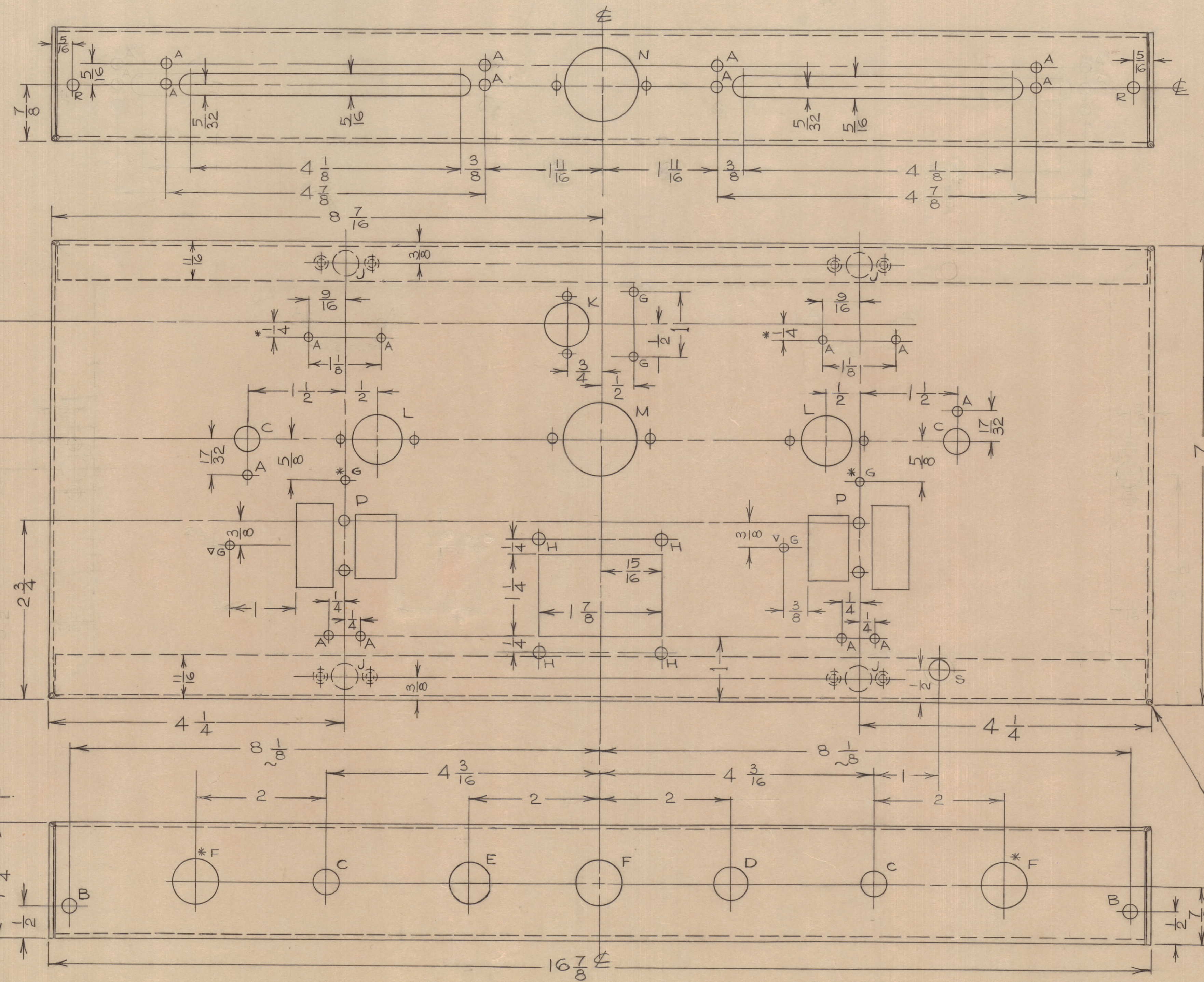
IF IT IS FOUND DESIRABLE TO CHANGE ANY TOLERANCE OR OTHER DETAIL SPECIFIED ON THIS DRAWING NOTIFY THE PURCHASER PROMPTLY.
 MAXIMUM ALLOWABLE TOLERANCES HAVE BEEN DETERMINED AND DEVIATIONS WILL BE CAUSE FOR REJECTION. REMOVE ALL BURRS AND SHARP EDGES

NOTICE TO PERSONS RECEIVING THIS DRAWING

THE TECHNICAL MATERIEL CORPORATION claims proprietary right in the material disclosed hereon. This drawing is issued in confidence for engineering information only and may not be reproduced or used to manufacture anything shown hereon without permission from THE TECHNICAL MATERIEL CORPORATION to the user. This drawing is loaned for mutual assistance and is subject to recall at any time.

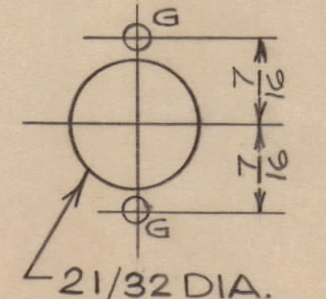
Property of:
 THE TECHNICAL MATERIEL CORPORATION
 MAMARONECK, NEW YORK

- HOLE S - 5/16 DIA.
- HOLE R - 3/16 DIA.
- HOLE Q - 11/64 X 11/32 SLOT
- HOLE A - 9/64 DIA.
- HOLE B - 13/64 DIA.
- HOLE C - 3/8 DIA.
- HOLE D - 1/2 DIA.
- HOLE E - 5/8 DIA. "D"
- HOLE F - 11/16 DIA.
- HOLE G - 1/8 DIA.
- HOLE H - 11/64 DIA.
- HOLE J -

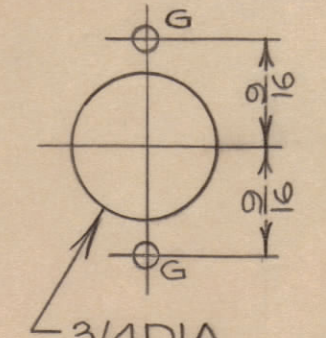


#348 DRILL #CSK AS SHOWN VIEWED FROM BOTTOM. (2 REQ'D.)

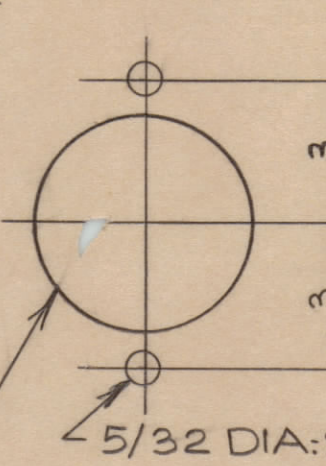
HOLE K -



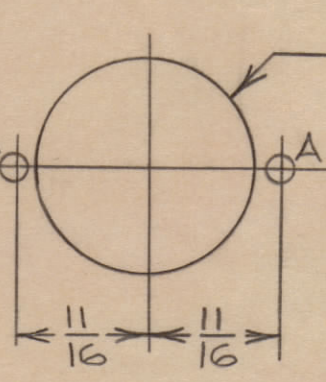
HOLE L -



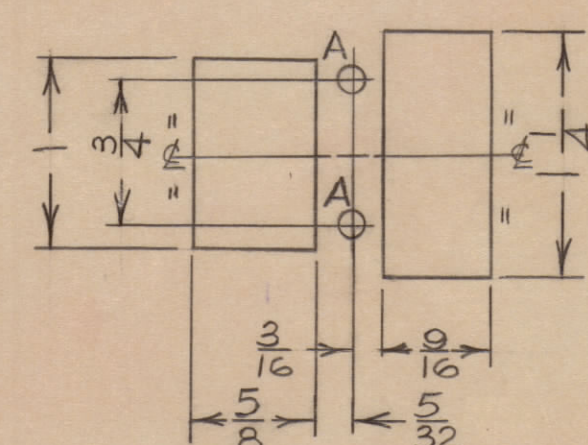
HOLE M -



HOLE N -



HOLE P -



NOTE: DRILL 1/8" HOLE ON INTERSECTION OF EACH BEND LINE.

NOTE: LEFT SIDE DRAWN
 RIGHT SIDE IDENTICAL.

REF: LD10157

D	Δ G HOLES ADDED	12			
	F* HOLES ADDED	11			
	S HOLES ADDED	10	MAY 1 1961	JPC	<i>[Signature]</i>
	4 7/8 WAS 6	9			
	4 3/8 WAS 5 1/4	8			
	1 1/4 WAS 2	7			
C	E HOLES ADDED	6	APR 11 1961	JPC	<i>[Signature]</i>
	SIDE FLANGES DELETED	5			
B	* 1/4 ADDED	4			
	8 7/8 WAS 8 3/16	3		JPC	<i>[Signature]</i>
	SLOTS Q WERE HOLES H	2	APR 11 1961		
A	* G HOLES ADDED	1	APR 11 1961	JPC	<i>[Signature]</i>
ISSUE	ITEM	CHANGED FROM	DATE	CN. NO.	DRAFTS
TOLERANCES					
SCALE: NTS					
ALL OTHERS	DEC. DIM. ±	1/64	DRILL PUNCH, COMMERCIAL STOCK SIZES AND MANUFACTURERS TOLERANCES ARE NOT INCLUDED.		

MID-1	E1147P	3/30/61
MODEL	PROJECT NO.	DATE
USED ON		

REQ. ITEM	PART NO.	DESCRIPTION	SYMBOL
.064 TK		TMC (Canada) LIMITED	
ALUM.		OTTAWA ONTARIO	
MATERIAL	WEIGHT PER PC.	CHASSIS	
TYPE & TEMPER	JPC	MID-1.	
HEAT TREAT. SPEC.			
CHECKED			
FINISH & SPEC. NO.			

MS10526 D

MS10526 D