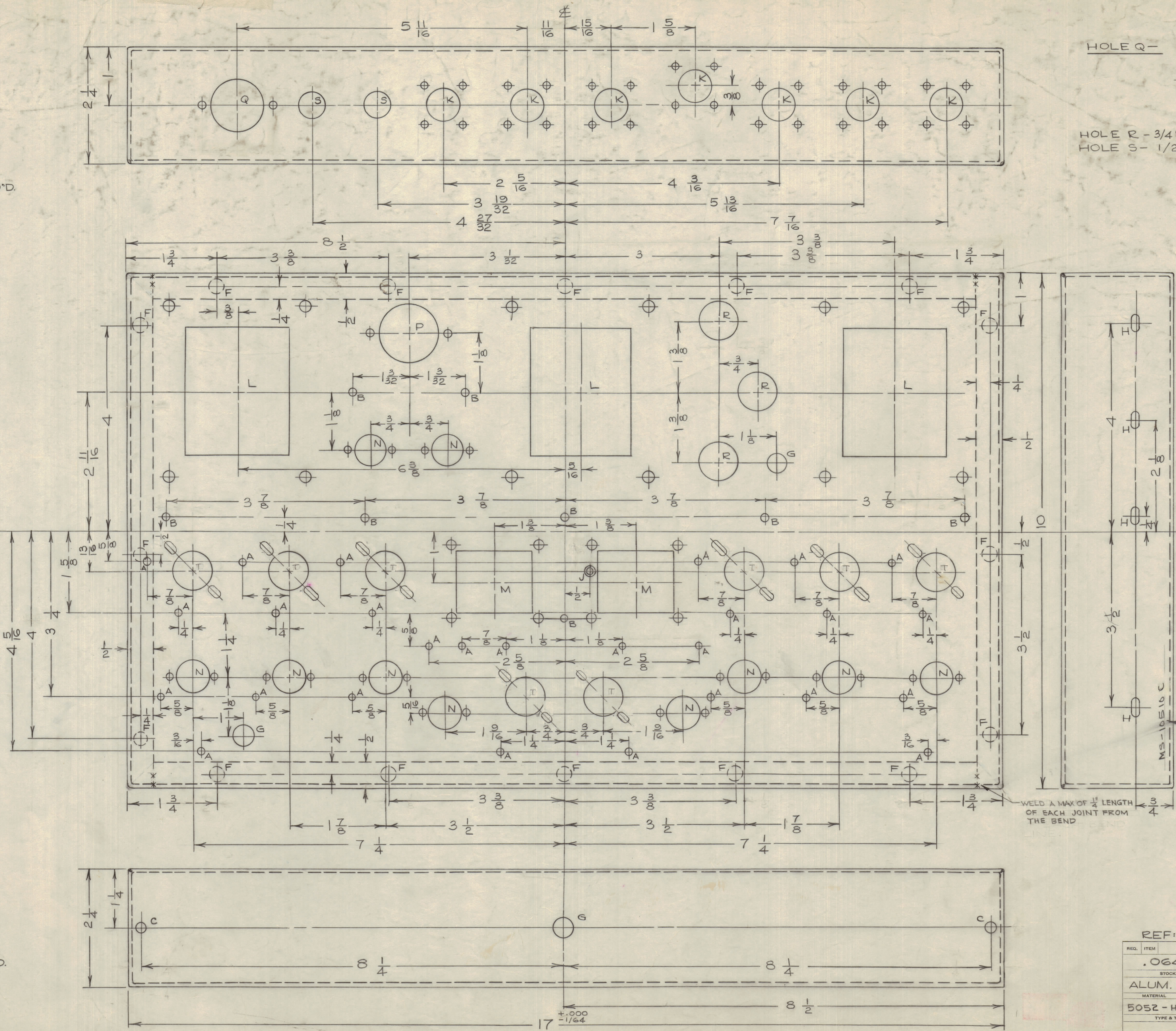
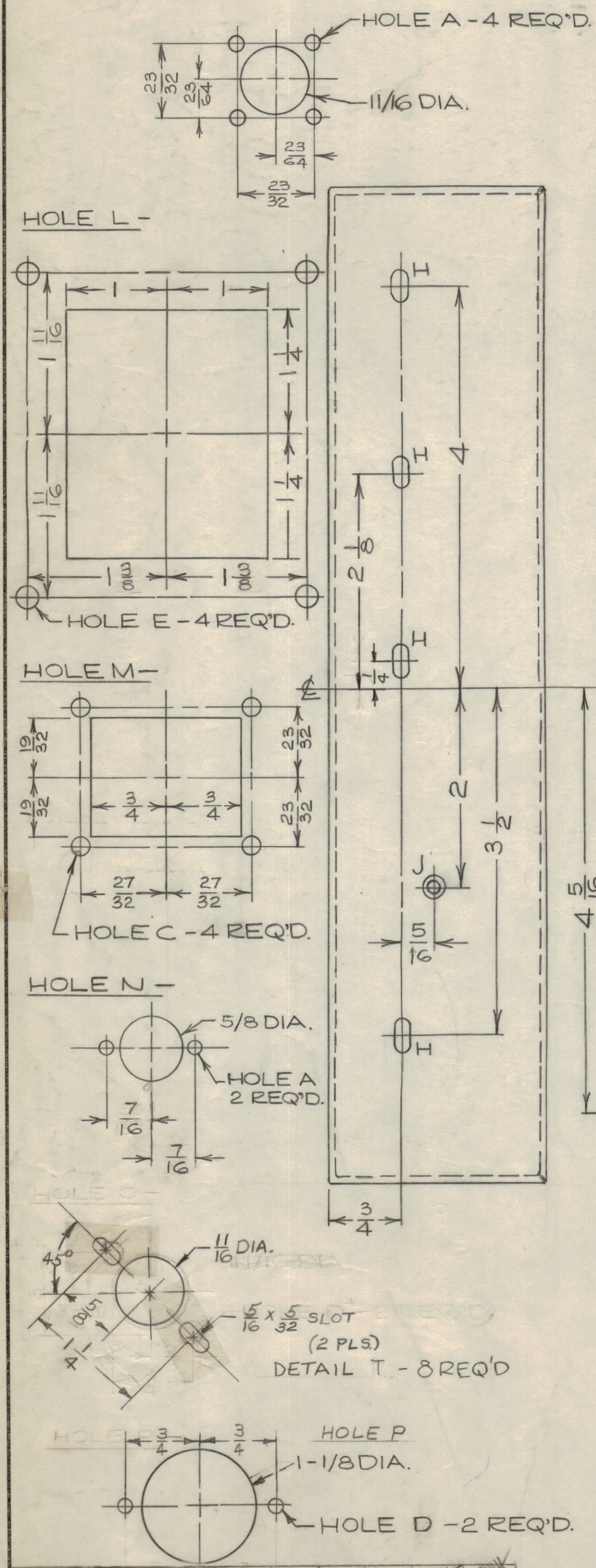


IF IT IS FOUND DESIRABLE TO CHANGE ANY TOLERANCE OR OTHER DETAIL SPECIFIED ON THIS DRAWING NOTIFY THE PURCHASER PROMPTLY.
 MAXIMUM ALLOWABLE TOLERANCES HAVE BEEN DETERMINED AND DEVIATIONS WILL BE CAUSE FOR REJECTION. REMOVE ALL BURRS AND SHARP EDGES.

- HOLE A - 1/8 DIA.
- HOLE B - 9/64 DIA.
- HOLE C - 3/16 DIA.
- HOLE D - 5/32 DIA.
- HOLE E - 7/32 DIA.
- HOLE F - 1/4 DIA.
- HOLE G - 3/8 DIA.
- HOLE H - 1/32 X 11/64 SLOT
- HOLE I - 1/8 DRILL & CSK.
- HOLE J -



NOTICE TO PERSONS RECEIVING THIS DRAWING
 THE TECHNICAL MATERIEL CORPORATION claims proprietary right in the material disclosed herein. This drawing is issued in confidence for engineering information only and may not be reproduced or used to manufacture anything shown herein without permission from THE TECHNICAL MATERIEL CORPORATION to the user. This drawing is loaned for mutual assistance and is subject to recall at any time.
 Property of:
 THE TECHNICAL MATERIEL CORPORATION
 33 AMARONIECK, NEW YORK

D	DETAIL WAS 01 SLIT	1/16	1/32	1/16	1/16	1/16	1/16
C	CORNERS WELD NOTE & FINISH REVISED	1/16	1/32	1/16	1/16	1/16	1/16
B	1/4" RELOCATED ON LEFT SIDE VIEW (CENTER)	1/16	1/32	1/16	1/16	1/16	1/16
ISSUE	CHANGED FROM	DATE	CL. NO.	DRAFTS	CHECKER	ENG. APP.	
TOLERANCES		SCALE: NTS					
ALL OTHERS	DEC. DIM. ±	DRILL PUNCH, COMMERCIAL STOCK SIZES AND MANUFACTURERS TOLERANCES ARE NOT INCLUDED.					

AMC 6-3
 JAN.30/61

REF: LD10010A.		DESCRIPTION	
REQ. ITEM	PART NO.	TMC (Canada) LIMITED	
.064 TK.		OTTAWA ONTARIO	
ALUM.		CHASSIS AMC 6-3	
MATERIAL	WEIGHT PER PC.	JPC	
5052-H32		DRAWN	ELEC. DES. APP.
TYPE & TEMPER		CHECKED	MESH. DES. APP.
HEAT TREAT. SPEC.		FINAL APPROVAL	
S404 YELLOW IRIDITE		MS10510 D	
FINISH & SPEC. NO.			