

IF IT IS FOUND DESIRABLE TO CHANGE ANY TOLERANCE OR OTHER DETAIL SPECIFIED ON THIS DRAWING NOTIFY THE PURCHASER PROMPTLY.

MS10404A

MAXIMUM ALLOWABLE TOLERANCES HAVE BEEN DETERMINED AND DEVIATIONS WILL BE CAUSE FOR REJECTION. REMOVE ALL BURRS AND SHARP EDGES

USED ON

MODEL

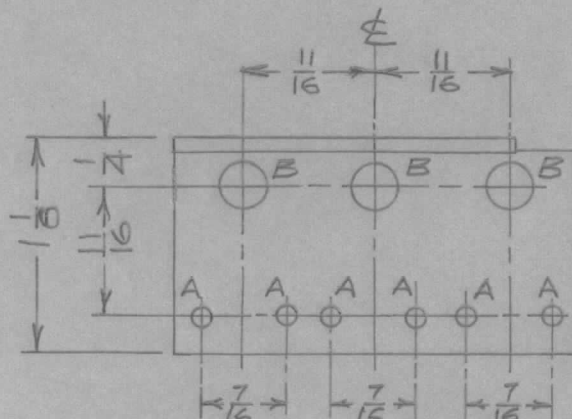
PROJECT NO.

ASS'Y. NO.

DATE

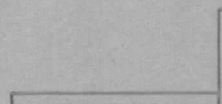
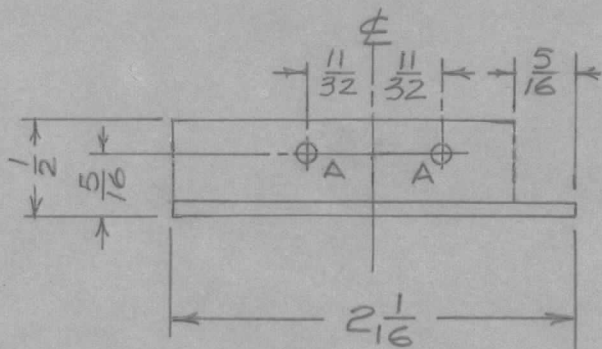
RFA-1 CE1095.

8/12/60.



A - 1/8 (.125) D.

B - 1/4 (.250) D.



REQ.	ITEM	PART NO.	DESCRIPTION	SYMBOL
		.064 TK.	TMC (Canada) LIMITED OTTAWA ONTARIO	
		STOCK SIZE		
		ALUM.	BRACKET, TRIMMER	
		MATERIAL	MTG.	
		5052-H32		
		TYPE & TEMPER	JPC	KA
			DRAWN	ELEC. DES. APP. MECH. DES. APP.
			CHECKED	FINAL APPROVAL
		HEAT TREAT. SPEC.		
		5101 CAUSTIC DIP S404 IRIDITE		
		FINISH & SPEC. NO.		

ISSUE	ITEM	CHANGED FROM	DATE	CN. NO.	DRAFTS	CHECKER	ENG. APP.
A		MS10404 WAS MS1242	8/15/60		JPC	GW	KA

TOLERANCES		SCALE 1:1
ALL OTHERS	DEC. DIM. ± FRAC. DIM. ± 1/64 ANGULAR DIM. ±	DIMENSIONS IN INCHES UNLESS OTHERWISE SPECIFIED DRILL, PUNCH, COMMERCIAL STOCK SIZES AND MANUFACTURERS TOLERANCES ARE NOT INCLUDED.

MS10404 A

IF IT IS FOUND DESIRABLE TO CHANGE ANY TOLERANCE OR OTHER DETAIL SPECIFIED ON THIS DRAWING NOTIFY THE PURCHASER PROMPTLY.

MS10406 B

MAXIMUM ALLOWABLE TOLERANCES HAVE BEEN DETERMINED AND DEVIATIONS WILL BE CAUSE FOR REJECTION. REMOVE ALL BURRS AND SHARP EDGES

USED ON

MODEL

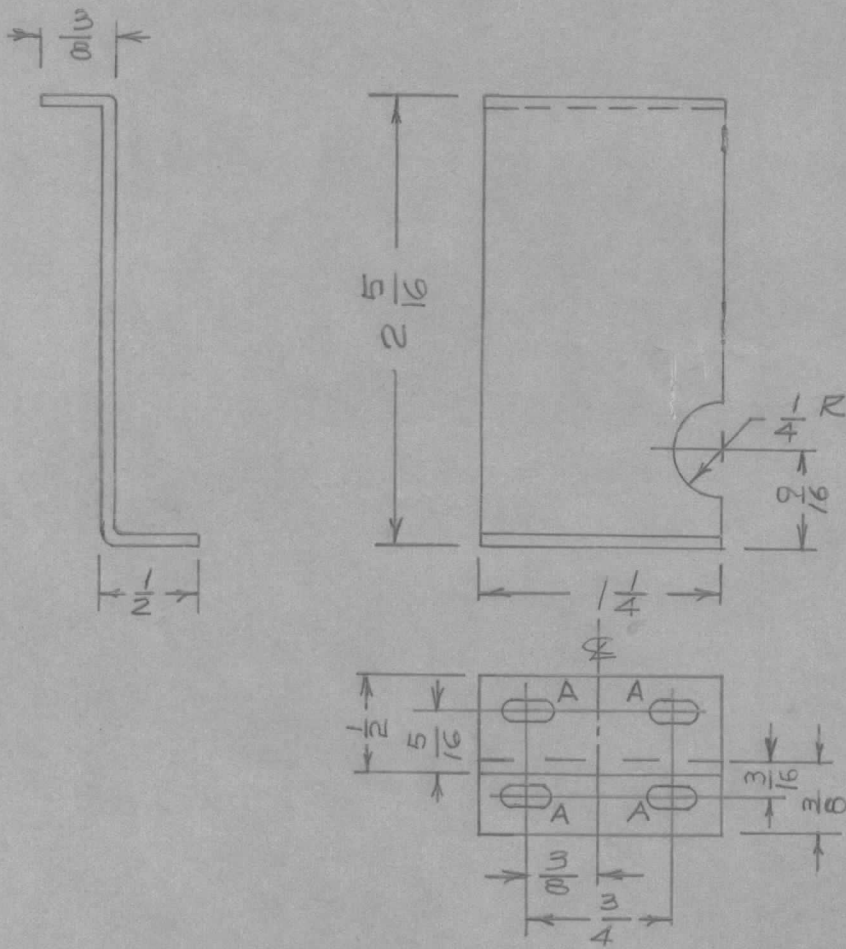
PROJECT NO.

ASS'Y. NO.

DATE

RFA-1 CE1095

8/12/60



A- 1/8 X 1/4 SLOT.

REQ.	ITEM	PART NO.	DESCRIPTION	SYMBOL
		.064TK.	TMC (Canada) LIMITED OTTAWA ONTARIO	
		STOCK SIZE		
		ALUM.	BRACKET CONNECTOR	
		MATERIAL	MTG.	
		5052-H32		
		TYPE & TEMPER	JPC	KA
			DRAWN	ELEC. DES. APP. MECH. DES. APP.
			CHECKED	FINAL APPROVAL
		HEAT TREAT. SPEC.		
		S101 CAUSTIC DIP S404 IRIDITE		
		FINISH & SPEC. NO.		
				MS10406 B

B	9/16 DIM WAS 1/2	2.3.67	17785	4th	QC/S	PB	
A	MS10406 WAS MS1244A	8/15/60		JPC	6-15	KA	
ISSUE	ITEM	CHANGED FROM	DATE	CN. NO.	DRAFTS	CHECKER	ENG. APP.

TOLERANCES		SCALE 1:1
ALL OTHERS	DEC. DIM. ±	DIMENSIONS IN INCHES UNLESS OTHERWISE SPECIFIED
	FRAC. DIM. ± 1/64	DRILL, PUNCH, COMMERCIAL STOCK SIZES AND MANUFACTURERS TOLERANCES ARE NOT INCLUDED.
	ANGULAR DIM. ±	

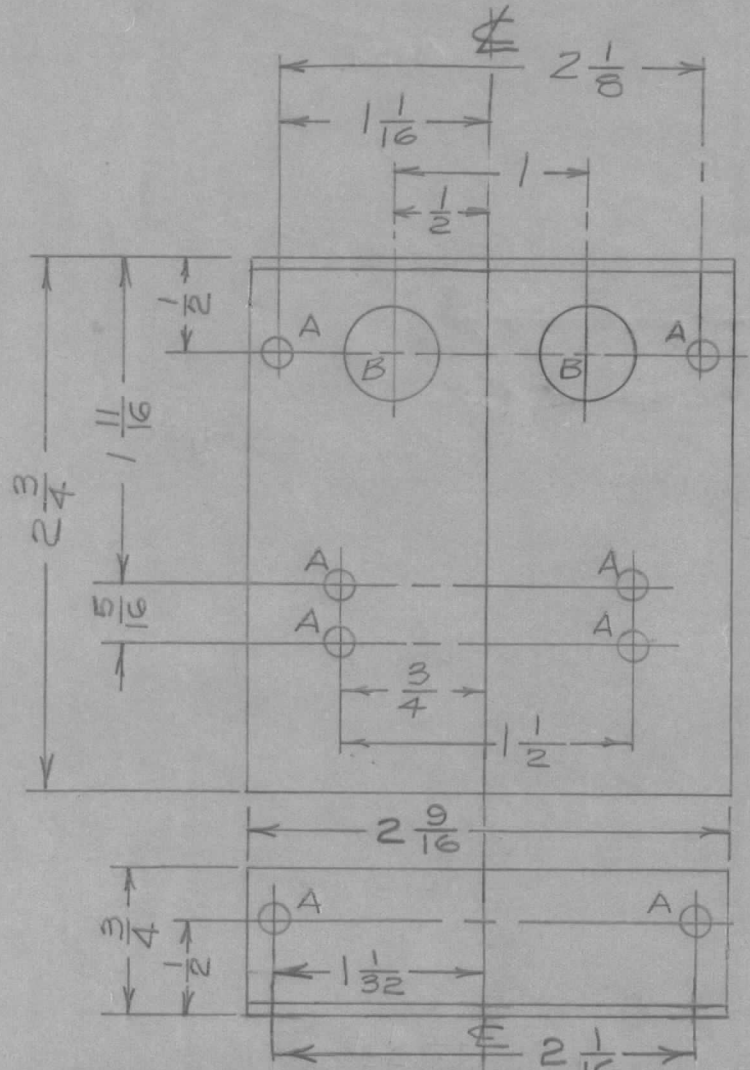
IF IT IS FOUND DESIRABLE TO CHANGE ANY TOLERANCE OR OTHER DETAIL SPECIFIED ON THIS DRAWING NOTIFY THE PURCHASER PROMPTLY.

MS10408B

MAXIMUM ALLOWABLE TOLERANCES HAVE BEEN DETERMINED AND DEVIATIONS WILL BE CAUSE FOR REJECTION. REMOVE ALL BURRS AND SHARP EDGES

USED ON

MODEL	PROJECT NO.	ASS'Y. NO.	DATE
RFA-1	CE1095		8/12/60



A - 1/64 (.171) D.
B - 1/2 (.500) D.

REF: SILKSCREENING LD10097

REQ.	ITEM	PART NO.	DESCRIPTION	SYMBOL
		.064 TK.	TMC (Canada) LIMITED OTTAWA ONTARIO	
		STOCK SIZE		
		ALUM.	BRACKET TERMINAL	
		MATERIAL	STRIP MTG.	
		WEIGHT PER PC.	JPC	
		5052-H32		
		TYPE & TEMPER		
			DRAWN	ELEC. DES. APP.
			MECH. DES. APP.	
			CHECKED	
			FINAL APPROVAL	
		HEAT TREAT. SPEC.	MS10408 B	
		5101 CAUSTIC DIP S404 IRIDITE		
		FINISH & SPEC. NO.		

B	CORRECTED	2/22/61	JPC	JPC	JPC		
A	MS10408 WAS MS1246C	8/15/60	JPC	JPC	JPC		
ISSUE	ITEM	CHANGED FROM	DATE	CN. NO.	DRAFTS	CHECKER	ENG. APP.
TOLERANCES			SCALE 1:1				
ALL OTHERS	DEC. DIM. ±		DIMENSIONS IN INCHES UNLESS OTHERWISE SPECIFIED				
	FRAC. DIM. ± 1/64		DRILL, PUNCH, COMMERCIAL STOCK SIZES AND MANUFACTURERS TOLERANCES ARE NOT INCLUDED.				
	ANGULAR DIM. ±						

IF IT IS FOUND DESIRABLE TO CHANGE ANY TOLERANCE OR OTHER DETAIL SPECIFIED ON THIS DRAWING NOTIFY THE PURCHASER PROMPTLY.

MS10414 C

MAXIMUM ALLOWABLE TOLERANCES HAVE BEEN DETERMINED AND DEVIATIONS WILL BE CAUSE FOR REJECTION. REMOVE ALL BURRS AND SHARP EDGES

USED ON

MODEL

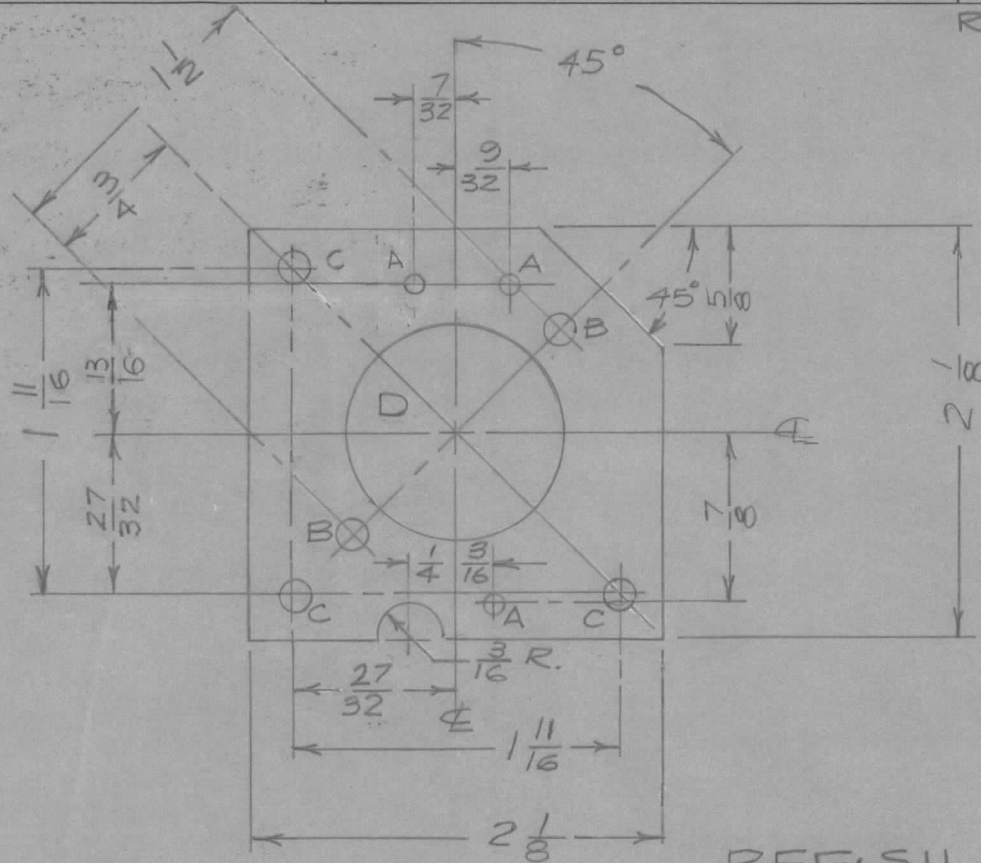
PROJECT NO.

ASS'Y. NO.

DATE

RFA-1 CE1095

8/15/60



- A - 1/8 (.125) D. — 3 REQ.
- B - 1/64 (.0156) D. — 2 REQ.
- C - No. 12 DR. (.189 D.) — 3 REQ.
- D - 1 - 1/8 (1.125) D. — 1 REQ.

MOUNT TE-108-18 IN "C" HOLES AS SHOWN

REF: SILKSCREENING LD10099

REQ.	ITEM	PART NO.	DESCRIPTION	SYMBOL						
		.064 TK.	TMC (Canada) LIMITED OTTAWA ONTARIO							
		STOCK SIZE								
C	1	DIM 13/16 WAS 23/32 - ON FINISH NOTE S101 DELETED	ALUM.	PLATE, DRIVER TUBE						
B	2	23/32 DIM WAS 11/16	MATERIAL	MTG.						
	1	3/32 DIM. WAS 1/16	WEIGHT PER PC.							
A		MS10414 WAS MS12533	5052 - H32							
			TYPE & TEMPER	JPC						
ISSUE	ITEM	CHANGED FROM	DATE	CN. NO.	DRAFTS	CHECKER	ENG. APP.			
		TOLERANCES		SCALE 1:1		DIMENSIONS IN INCHES UNLESS OTHERWISE SPECIFIED		HEAT TREAT. SPEC.		
ALL OTHERS		DEC. DIM. ± FRAC. DIM. ± 1/64 ANGULAR DIM. ±		DRILL, PUNCH, COMMERCIAL STOCK SIZES AND MANUFACTURERS TOLERANCES ARE NOT INCLUDED.		S404 IRIDITE		FINISH & SPEC. NO.		
						DRAWN		ELEC. DES. APP.		MECH. DES. APP.
						CHECKED		FINAL APPROVAL		
								MS10414 C		

IF IT IS FOUND DESIRABLE TO CHANGE ANY TOLERANCE OR OTHER DETAIL SPECIFIED ON THIS DRAWING NOTIFY THE PURCHASER PROMPTLY.

MS10419A

MAXIMUM ALLOWABLE TOLERANCES HAVE BEEN DETERMINED AND DEVIATIONS WILL BE CAUSE FOR REJECTION. REMOVE ALL BURRS AND SHARP EDGES

USED ON

MODEL

PROJECT NO.

ASS'Y. NO.

DATE

RFA-1 CE1095

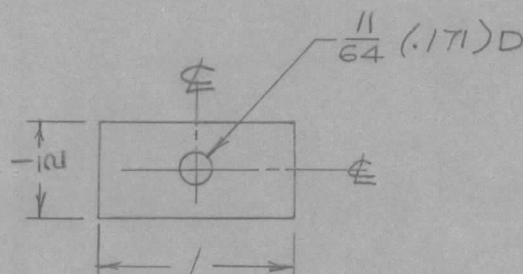
8/15/60

NOTICE TO PERSONS RECEIVING THIS DRAWING

THE TECHNICAL MATERIEL CORPORATION claims proprietary right in the material disclosed hereon. This drawing is issued in confidence for engineering information only and may not be reproduced or used to manufacture anything shown hereon without permission from THE TECHNICAL MATERIEL CORPORATION to the user. This drawing is loaned for mutual assistance and is subject to recall at any time.

Property of:

THE TECHNICAL MATERIEL CORPORATION
MAMARONECK, NEW YORK



REQ.	ITEM	PART NO.	DESCRIPTION	SYMBOL
		3/16 TK.	TMC (Canada) LIMITED OTTAWA ONTARIO	
		STOCK SIZE		
		ALUM.	SPACER, CAPACITOR	
		MATERIAL	WEIGHT PER PC.	
		2024 - T3		
		TYPE & TEMPER	JPC	KH
			DRAWN	ELEC. DES. APP. MECH. DES. APP.
			CHECKED	FINAL APPROVAL
		HEAT TREAT. SPEC.		
		S101 CAUSTIC DIP S404 IRIDITE		
		FINISH & SPEC. NO.		
			MS10419	A

A	MS10419 WAS MS1258	8/15/60	JPC	GH	VH	
ISSUE	ITEM	CHANGED FROM	DATE	CN. NO.	DRAFTS CHECKER	ENG. APP.
TOLERANCES		SCALE 1:1				
ALL OTHERS	DEC. DIM. ±	DIMENSIONS IN INCHES UNLESS OTHERWISE SPECIFIED				
	FRAC. DIM. ± 1/64	DRILL, PUNCH, COMMERCIAL STOCK SIZES AND MANUFACTURERS TOLERANCES ARE NOT INCLUDED.				
	ANGULAR DIM. ±					

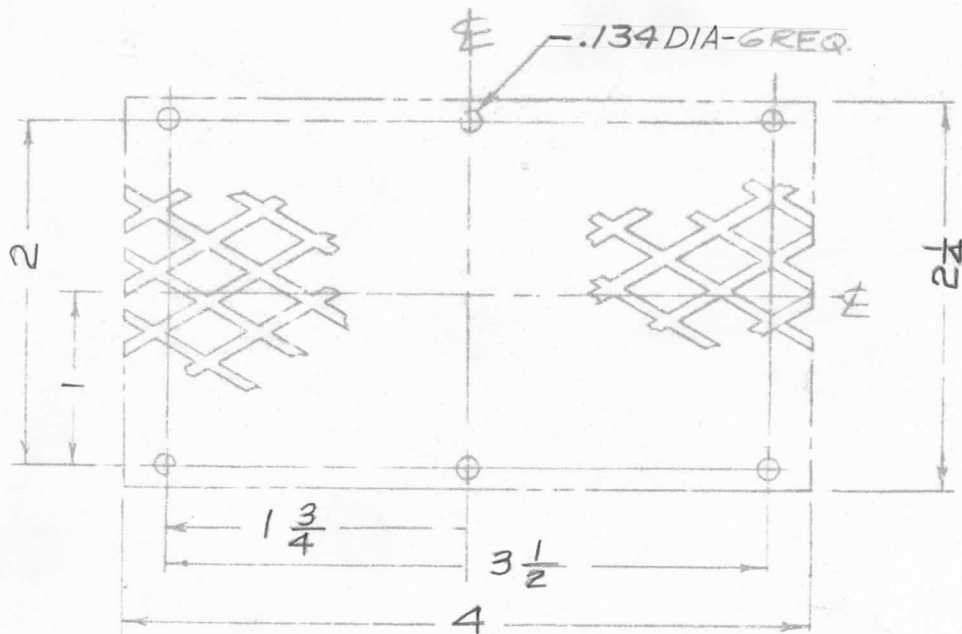
IF IT IS FOUND DESIRABLE TO CHANGE ANY TOLERANCE OR OTHER DETAIL SPECIFIED ON THIS DRAWING NOTIFY THE PURCHASER PROMPTLY.

MS10420C

MAXIMUM ALLOWABLE TOLERANCES HAVE BEEN DETERMINED AND DEVIATIONS WILL BE CAUSE FOR REJECTION. REMOVE ALL BURRS AND SHARP EDGES

USED ON

MODEL	PROJECT NO.	ASSY. NO.	DATE
RFA-1	CE1095		5/24/60
RFE-1		A10461	23 MAR 61



NOTE:

MATERIAL - .032 FLATTENED EXPANDED ALUMINUM, 3/8 X 3/16

REQ.	ITEM	PART NO.	DESCRIPTION	SYMBOL
		SEE NOTE	TMC (Canada) LIMITED OTTAWA ONTARIO	
		STOCK SIZE	VENT. LEFT SIDE,	
		MATERIAL	WRAPAROUND	
		5052-H32	JPC	KHT
		TYPE & TEMPER	DRAWN	ELEC. DES. APP. MECH. DES. APP.
			CHECKED	FINAL APPROVAL
		HEAT TREAT. SPEC.	MS10420 C	
		S101 CAUSTIC DIP		
		S404 IRIDITE		
		FINISH & SPEC. NO.		

ISSUE	ITEM	CHANGED FROM	DATE	CN. NO.	DRAFTS	CHECKER	ENG. APP.
C		REVISED PER CEMN 1153	16/3/72		TH	LB	JW
B		PERFORATION & NOTE REF. DWG. DELETED	11/3/67	1785	4/10		QC/3/4
A		MS10420C WAS MS12B9A	8/24/60		JPC	GIB	JHT

TOLERANCES		SCALE	DIMENSIONS IN INCHES UNLESS OTHERWISE SPECIFIED
ALL	DEC. DIM. ±	1 : 1	DRILL PUNCH COMMERCIAL STOCK SIZES AND MANUFACTURERS TOLERANCES ARE NOT INCLUDED.
OTHERS	FRACTIONAL DIM. ± 1/64		
	ANGULAR D. M. ±		

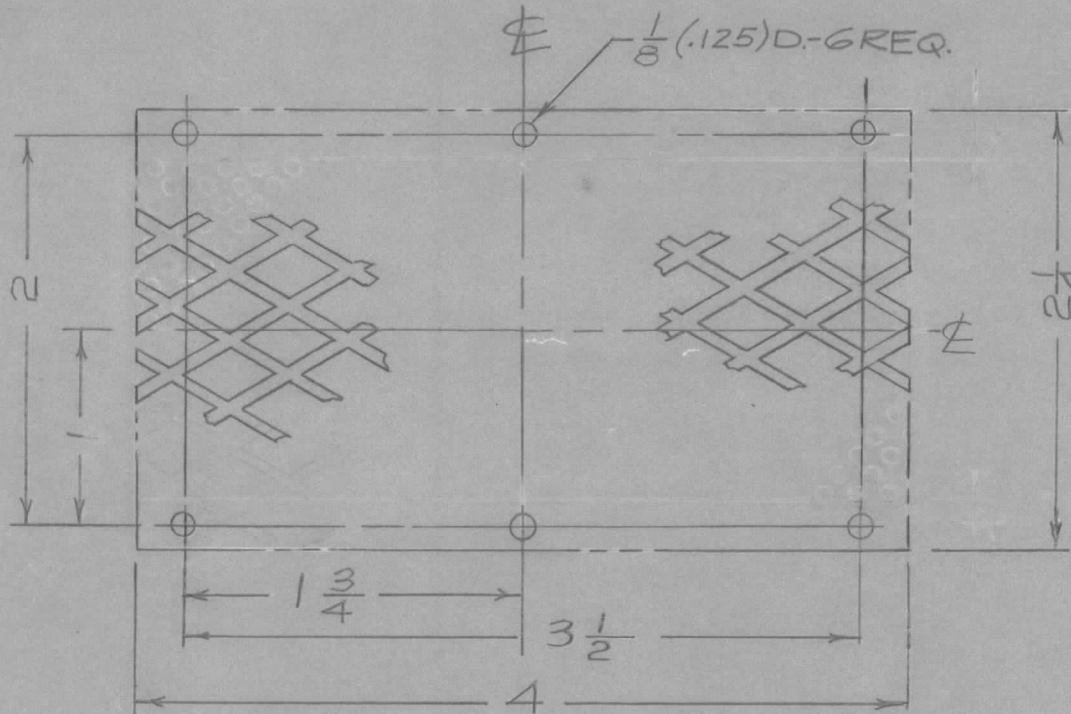
IF IT IS FOUND DESIRABLE TO CHANGE ANY TOLERANCE OR OTHER DETAIL SPECIFIED ON THIS DRAWING NOTIFY THE PURCHASER PROMPTLY.

MS10420B

MAXIMUM ALLOWABLE TOLERANCES HAVE BEEN DETERMINED AND DEVIATIONS WILL BE CAUSE FOR REJECTION. REMOVE ALL BURRS AND SHARP EDGES

USED ON

MODEL	PROJECT NO.	ASS'Y. NO.	DATE
RFA-1	CE1095		8/24/60



NOTE:

MATERIAL - .032 FLATTENED EXPANDED ALUMINUM, 3/8 X 3/16

REQ.	ITEM	PART NO.	DESCRIPTION	SYMBOL
		SEE NOTE	TMC (Canada) LIMITED OTTAWA ONTARIO	
		STOCK SIZE	VENT, LEFT SIDE,	
		SEE NOTE	WRAPAROUND	
		MATERIAL	JPC	
		WEIGHT PER PC.	5052-H32	
		TYPE & TEMPER	JPC	
		HEAT TREAT. SPEC.	S101 CAUSTIC DIP S404 IRIDITE	
		FINISH & SPEC. NO.		

B	PERFORATION & NOTE REF DWG DELETED	2/13/61	17785	W/HO	Q/S JB		
A	MS10420 WAS MS1259A	8/24/60		JPC	GIB [initials]		
ISSUE	ITEM	CHANGED FROM	DATE	CN. NO.	DRAFTS	CHECKER	ENG. APP.

TOLERANCES			SCALE 1:1
ALL OTHERS	DEC. DIM. ±		DIMENSIONS IN INCHES UNLESS OTHERWISE SPECIFIED
	FRAC. DIM. ±	1/64	DRILL, PUNCH, COMMERCIAL STOCK SIZES AND MANUFACTURERS TOLERANCES ARE NOT INCLUDED.
	ANGULAR DIM. ±		

MS10420B

IF IT IS FOUND NECESSARY TO CHANGE ANY TOLERANCES OR OTHER DETAIL SPECIFIED ON THIS DRAWING NOTIFY THE PURCHASER PROMPTLY.

MAXIMUM ALLOWABLE TOLERANCES HAVE BEEN DETERMINED AND DEVIATIONS WILL BE CAUSE FOR REJECTION. REMOVE ALL BURRS AND SHARP EDGES

MS10421C

USED ON

MODEL	PROJECT NO.	ASSY. NO.	DATE
RFA-1	CE1093		3/24/60
RFE-1		A10461	23 MAR 72



NOTE:

MATERIAL - .032 FLATTENED EXPANDED ALUMINUM, 3/8 X 3/16

ISSUE	ITEM	CHANGED FROM	DATE	CN. NO.	DRAFTSMAN	CHECKER	ENG. APP.
C		REVISED PER CEMN 1153	16/3/72		TH	LB	JW
B		PERFORATION NOTES REF DWG DELETED	2.2.67	17785	WHD	JPC	JPC
A		MS10421 WAS MS1260	8/24/60		JPC	J.S	JPC

REQ.	ITEM	PART NO.	DESCRIPTION	SYMBOL
		SEE NOTE	TMC (Canada) LIMITED	
		STOCK SIZE	OTTAWA ONTARIO	
		SEE NOTE	VENT, RIGHT SIDE,	
		MATERIAL	WRAPAROUND	
		5052-H32	JPC	
		TYPE & TEMPER	DRAWN	
			ELEC. DES. APP.	
			MECH. DES. APP.	
			CHECKED	
			FINAL APPROVAL	
			MS10421C	

AL.	OTHERS	DEC. DIM. ±	FRAC. DIM. ±	ANGULAR DIM. ±	SCALE	DIMENSIONS IN INCHES UNLESS OTHERWISE SPECIFIED	DRILL, PUNCH, COMMERCIAL STOCK SIZES AND MANUFACTURERS TOLERANCES ARE NOT INCLUDED.	HEAT TREAT SPEC.	FINISH & SPEC. NO.
			1/64		1:1			S10 CAUSTIC DIP	
								S404 IRIDITE	

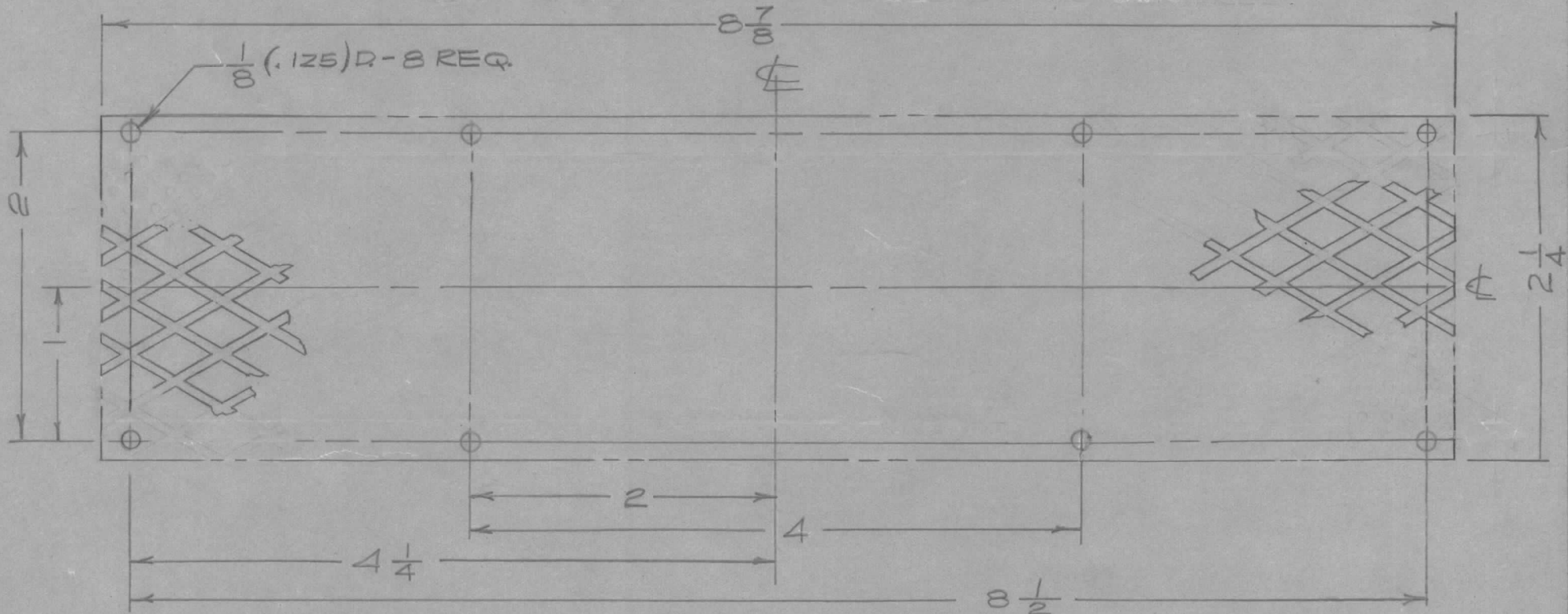
IF IT IS FOUND DESIRABLE TO CHANGE ANY TOLERANCE OR OTHER DETAIL SPECIFIED ON THIS DRAWING NOTIFY THE PURCHASER PROMPTLY.

MS10421B

MAXIMUM ALLOWABLE TOLERANCES HAVE BEEN DETERMINED AND DEVIATIONS WILL BE CAUSE FOR REJECTION. REMOVE ALL BURRS AND SHARP EDGES

USED ON

MODEL	PROJECT NO.	ASS'Y. NO.	DATE
RFA-1	CE1095		8/24/60



NOTE:

MATERIAL - .032 FLATTENED EXPANDED ALUMINUM, 3/8 X 3/16

REQ.	ITEM	PART NO.	DESCRIPTION	SYMBOL
	SEE NOTE		TMC (Canada) LIMITED OTTAWA ONTARIO	
	STOCK SIZE		VENT, RIGHT SIDE,	
	SEE NOTE		WRAPAROUND.	
	MATERIAL	WEIGHT PER PC.	JPC	KA
	5052-H32		DRAWN	ELEC. DES. APP.
	TYPE & TEMPER		MECH. DES. APP.	
			CHECKED	
			FINAL APPROVAL	
			MS10421B	
			HEAT TREAT. SPEC.	
			S101 CAUSTIC DIP	
			S404 IRIDITE	
			FINISH & SPEC. NO.	

B	PERFORATION NOTE REF DWG DELETED	2.3.67	17785	440	JPC	KA	
A	MS10421 WAS MS1260	8/24/60		JPC	KA	KA	
ISSUE	ITEM	CHANGED FROM	DATE	CN. NO.	DRAFTS	CHECKER	ENG. APP.

TOLERANCES		SCALE 1:1
ALL OTHERS	DEC. DIM. ± FRAC. DIM. ± 1/64 ANGULAR DIM. ±	DIMENSIONS IN INCHES UNLESS OTHERWISE SPECIFIED DRILL, PUNCH, COMMERCIAL STOCK SIZES AND MANUFACTURERS TOLERANCES ARE NOT INCLUDED.

IF IT IS FOUND DESIRABLE TO CHANGE ANY TOLERANCE OR OTHER DETAIL SPECIFIED ON THIS DRAWING NOTIFY THE PURCHASER PROMPTLY.

MS10423B

MAXIMUM ALLOWABLE TOLERANCES HAVE BEEN DETERMINED AND DEVIATIONS WILL BE CAUSE FOR REJECTION. REMOVE ALL BURRS AND SHARP EDGES

USED ON

MODEL

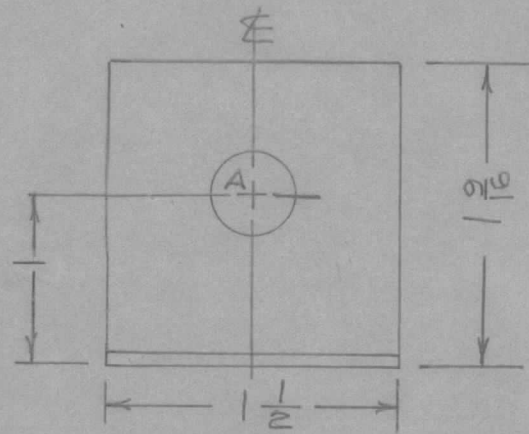
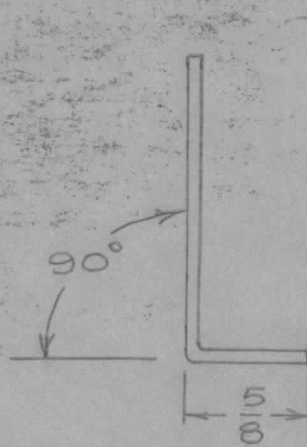
PROJECT NO.

ASS'Y. NO.

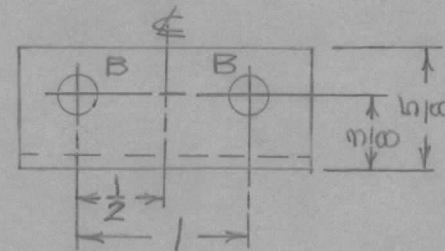
DATE

RFA-1 CE1095

8/16/60



A - $\frac{7}{16}$ (.437) D. - 1 REQ.
 B - $\frac{13}{64}$ D. - 2 REQ.



REQ.	ITEM	PART NO.	DESCRIPTION	SYMBOL			
		.064 TK.	TMC (Canada) LIMITED OTTAWA ONTARIO				
		STOCK SIZE					
		ALUM.	BRACKET, MOUNTING				
		MATERIAL	WEIGHT PER PC.				
B	1	DIM. WAS 7/8 (ON FRONT VIEW)	8/21/61	5458	E. E.	RU.	SM
A	1	MS10423 WAS MS1262A	8/16/60		JPC	GA	KH
ISSUE	ITEM	CHANGED FROM	DATE	CN. NO.	DRAFTS	CHECKER	ENG. APP.
TOLERANCES			SCALE 1:1				
ALL OTHERS	DEC. DIM. ±		DIMENSIONS IN INCHES UNLESS OTHERWISE SPECIFIED				
	FRAC. DIM. ± 1/64		DRILL, PUNCH, COMMERCIAL STOCK SIZES AND MANUFACTURERS TOLERANCES ARE NOT INCLUDED.				
	ANGULAR DIM. ± 1/2°						
HEAT TREAT. SPEC.		S101 CAUSTIC DIP S404 IRIDITE					
FINISH & SPEC. NO.							
DRAWN		ELEC. DES. APP.		MECH. DES. APP.			
CHECKED		FINAL APPROVAL					
		MS10423		B			

IF IT IS FOUND DESIRABLE TO CHANGE ANY TOLERANCE OR OTHER DETAIL SPECIFIED ON THIS DRAWING NOTIFY THE PURCHASER PROMPTLY.

MS10424B

MAXIMUM ALLOWABLE TOLERANCES HAVE BEEN DETERMINED AND DEVIATIONS WILL BE CAUSE FOR REJECTION. REMOVE ALL BURRS AND SHARP EDGES

USED ON

MODEL

PROJECT NO.

ASS'Y. NO.

DATE

RFA-1 CE1095

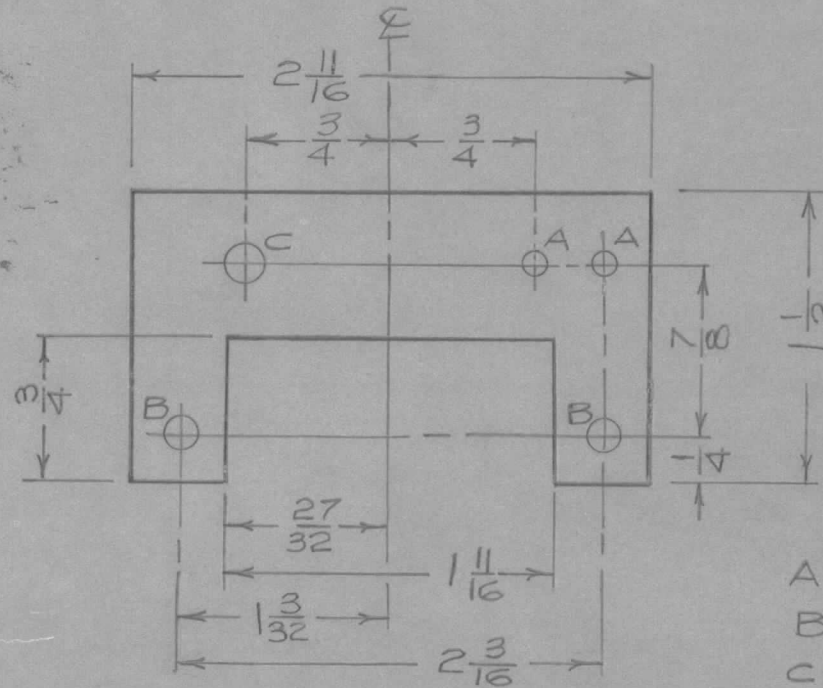
8/16/60

NOTICE TO PERSONS RECEIVING THIS DRAWING

THE TECHNICAL MATERIEL CORPORATION claims proprietary right in the material disclosed hereon. This drawing is issued in confidence for engineering information only and may not be reproduced or used to manufacture anything shown hereon without permission from THE TECHNICAL MATERIEL CORPORATION to the user. This drawing is loaned for mutual assistance and is subject to recall at any time.

Property of:

THE TECHNICAL MATERIEL CORPORATION
MAMARONECK, NEW YORK



- A - .086 DIA. ——— 2 REQ.
- B - 1/64 (.171) D. ——— 2 REQ.
- C - 13/64 (.203) D. ——— 1 REQ.

REF: SILKSCREENING - LD10103

REQ.	ITEM	PART NO.	DESCRIPTION			SYMBOL
		.064 TK.	TMC (Canada) LIMITED OTTAWA ONTARIO			
		STOCK SIZE				
		ALUM.	PLATE CAPACITOR			
		MATERIAL	WEIGHT PER PC.	MTG.		
		5052-H32				
		TYPE & TEMPER	J.P.C.	/	KA	
		HEAT TREAT. SPEC.	DRAWN	ELEC. DES. APP.	MECH. DES. APP.	
		S101 CAUSTIC DIP S404 IRIDITE				
		FINISH & SPEC. NO.	CHECKED	FINAL APPROVAL		
			MS10424			B

ISSUE	ITEM	CHANGED FROM	DATE	CN. NO.	DRAFTS	CHECKER	ENG. APP.
B	1	2X HOLES WERE 1/8 DIA.	8/21/61	5458	A. G.	KU	SW
A	1	MS10425 WAS MS1264A	8/16/60		JPC	GA	KA

TOLERANCES		SCALE
ALL	DEC. DIM. ±	:
OTHERS	FRAC. DIM. ± 1/64	
	ANGULAR DIM. ±	

DIMENSIONS IN INCHES UNLESS OTHERWISE SPECIFIED	
DRILL, PUNCH, COMMERCIAL STOCK SIZES AND MANUFACTURERS TOLERANCES ARE NOT INCLUDED.	

IF IT IS FOUND DESIRABLE TO CHANGE ANY TOLERANCE OR OTHER DETAIL SPECIFIED ON THIS DRAWING NOTIFY THE PURCHASER PROMPTLY.

MS10425B

MAXIMUM ALLOWABLE TOLERANCES HAVE BEEN DETERMINED AND DEVIATIONS WILL BE CAUSE FOR REJECTION. REMOVE ALL BURRS AND SHARP EDGES

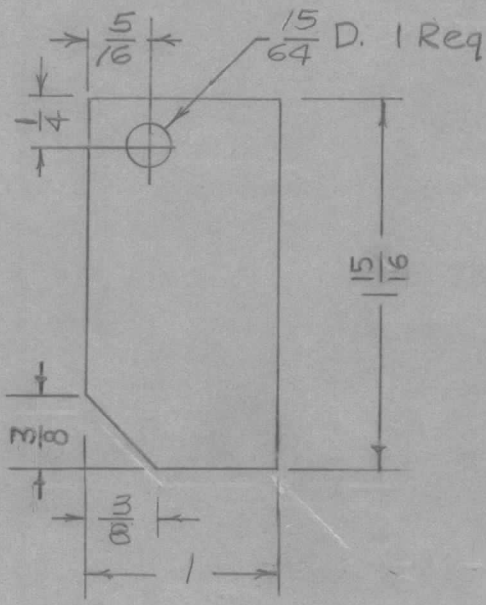
USED ON

MODEL	PROJECT NO.	ASS'Y. NO.	DATE
REA-1	CE1095		8/15/60

NOTICE TO PERSONS RECEIVING THIS DRAWING

THE TECHNICAL MATERIEL CORPORATION claims proprietary right in the material disclosed hereon. This drawing is issued in confidence for engineering information only and may not be reproduced or used to manufacture anything shown hereon without permission from THE TECHNICAL MATERIEL CORPORATION to the user. This drawing is loaned for mutual assistance and is subject to recall at any time.

Property of:
THE TECHNICAL MATERIEL CORPORATION
MAMARONECK, NEW YORK



B	1	1 1/16 DIM. WAS 2	8/21/61	5458	E. A.	RU	SPM
A	1	MS10425 WAS MS1265A	8/15/60		JPC	GH	HH
ISSUE	ITEM	CHANGED FROM	DATE	CN. NO.	DRAFTS	CHECKER	ENG. APP.

REQ.	ITEM	PART NO.	DESCRIPTION	SYMBOL
		.081 TK.	TMC (Canada) LIMITED	
		STOCK SIZE	OTTAWA ONTARIO	
		ALUM.	PLATE, CONNECTOR	
		MATERIAL	LOCKING	
		WEIGHT PER PC.	J.P.C.	KH
		5052-H32	DRAWN	ELEC. DES. APP.
		TYPE & TEMPER	MECH. DES. APP.	
		HEAT TREAT. SPEC.	5052	10/10
		FINISH & SPEC. NO.	CHECKED	FINAL APPROVAL
		S101 CAUSTIC DIP S404 IRIDITE		MS10425 B

TOLERANCES		SCALE	
ALL OTHERS	DEC. DIM. ± FRAC. DIM. ± ANGULAR DIM. ±	DIMENSIONS IN INCHES UNLESS OTHERWISE SPECIFIED DRILL, PUNCH, COMMERCIAL STOCK SIZES AND MANUFACTURERS TOLERANCES ARE NOT INCLUDED.	

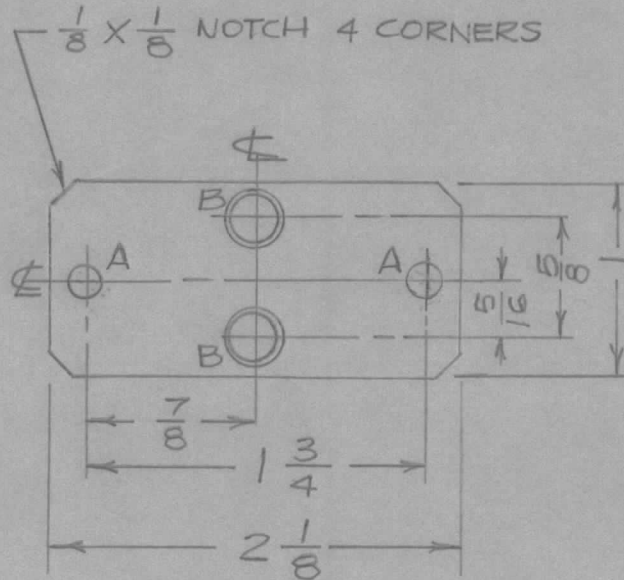
IF IT IS FOUND DESIRABLE TO CHANGE ANY TOLERANCE OR OTHER DETAIL SPECIFIED ON THIS DRAWING NOTIFY THE PURCHASER PROMPTLY.

MS10427A

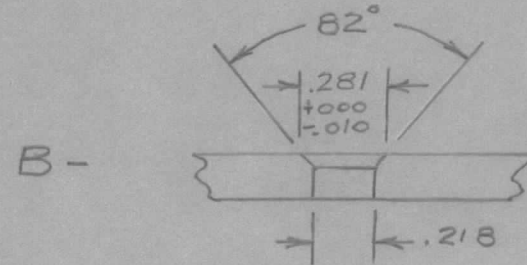
MAXIMUM ALLOWABLE TOLERANCES HAVE BEEN DETERMINED AND DEVIATIONS WILL BE CAUSE FOR REJECTION. REMOVE ALL BURRS AND SHARP EDGES

USED ON

MODEL	PROJECT NO.	ASS'Y. NO.	DATE
RFA-1	CE1095		8/16/60



A - $1\frac{3}{64}$ (.203) D.



MOUNT SM-111-D-206 IN "B" HOLES AS SHOWN.

REQ.	ITEM	PART NO.	DESCRIPTION	SYMBOL
		.081TK.	TMC (Canada) LIMITED OTTAWA ONTARIO	
		STOCK SIZE		
		ALUM.	PLATE, TUBE CLAMP	
		MATERIAL	WTG. PER PC.	
		5052-H32	MTG.	
		TYPE & TEMPER	JPC	
			DRAWN	ELEC. DES. APP. MECH. DES. APP.
			<i>[Signature]</i>	<i>[Signature]</i>
		HEAT TREAT. SPEC.	CHECKED	FINAL APPROVAL
		S101 CAUSTIC DIP S404 IRIDITE		
		FINISH & SPEC. NO.		
			MS10427	A

ISSUE	ITEM	CHANGED FROM	DATE	CN. NO.	DRAFTS	CHECKER	ENG. APP.
A		MS10427 WAS MS1270A	8/16/60		JPC	KH	KH

TOLERANCES		SCALE
ALL OTHERS	DEC. DIM. ± FRAC. DIM. ± 1/64 ANGULAR DIM. ±	1:1
DIMENSIONS IN INCHES UNLESS OTHERWISE SPECIFIED		
DRILL, PUNCH, COMMERCIAL STOCK SIZES AND MANUFACTURERS TOLERANCES ARE NOT INCLUDED.		

IF IT IS FOUND DESIRABLE TO CHANGE ANY TOLERANCE OR OTHER DETAIL SPECIFIED ON THIS DRAWING NOTIFY THE PURCHASER PROMPTLY.

MS10428A

MAXIMUM ALLOWABLE TOLERANCES HAVE BEEN DETERMINED AND DEVIATIONS WILL BE CAUSE FOR REJECTION. REMOVE ALL BURRS AND SHARP EDGES

USED ON

MODEL

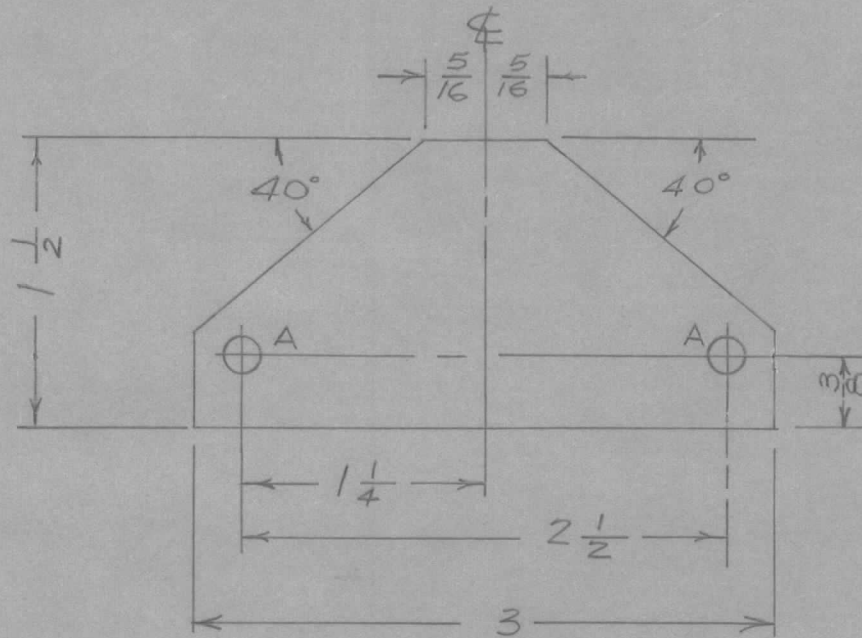
PROJECT NO.

ASS'Y. NO.

DATE

RFA-7 CE1095

8/15/60



A - $\frac{13}{64}$ (.203) D.

REQ.	ITEM	PART NO.	DESCRIPTION	SYMBOL
		.064 TK.	TMC (Canada) LIMITED OTTAWA ONTARIO	A
		STOCK SIZE		
		ALUM.	PLATE, FIXED, CAPACITOR	
		MATERIAL		
		5052-H32		
		TYPE & TEMPER	J.P.C.	KA
		HEAT TREAT. SPEC.	DRAWN	ELEC. DES. APP.
		FINISH & SPEC. NO.	501CAUTIC DIP S404 IRIDITE	MECH. DES. APP.
			CHECKED	FINAL APPROVAL
				MS10428 A

ISSUE	ITEM	CHANGED FROM	DATE	CN. NO.	DRAFTS	CHECKER	ENG. APP.
A		MS10428 WAS MS1272	8/15/60		JPC	Gus	KA

TOLERANCES		SCALE 1:1
ALL OTHERS	DEC. DIM. ± FRAC. DIM. ± 1/64 ANGULAR DIM. ± 2°	DIMENSIONS IN INCHES UNLESS OTHERWISE SPECIFIED DRILL, PUNCH, COMMERCIAL STOCK SIZES AND MANUFACTURERS TOLERANCES ARE NOT INCLUDED.

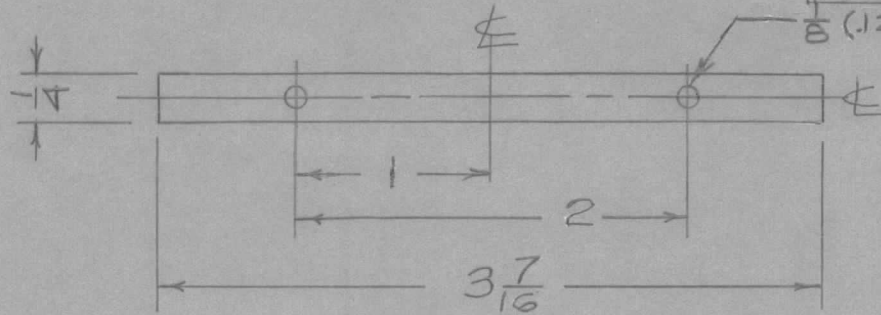
IF IT IS FOUND DESIRABLE TO CHANGE ANY TOLERANCE OR OTHER DETAIL SPECIFIED ON THIS DRAWING NOTIFY THE PURCHASER PROMPTLY.

MS10429C

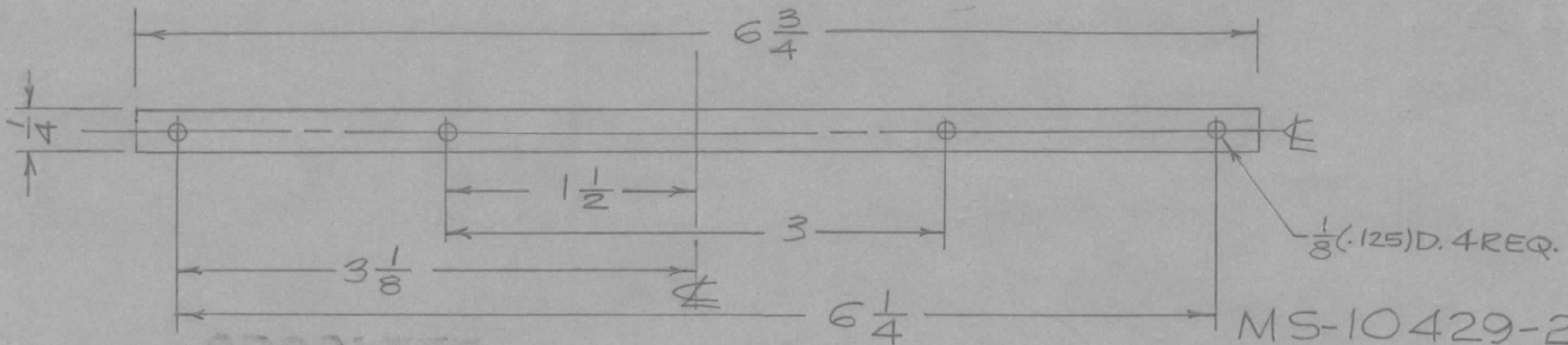
MAXIMUM ALLOWABLE TOLERANCES HAVE BEEN DETERMINED AND DEVIATIONS WILL BE CAUSE FOR REJECTION. REMOVE ALL BURRS AND SHARP EDGES

USED ON

MODEL	PROJECT NO.	ASS'Y. NO.	DATE
RFA-1	CE1095		8/23/60



MS-10429-1



MS-10429-2

OBSCLETE
NO LONGER USED

REQ.	ITEM	PART NO.	DESCRIPTION	SYMBOL
		.051TK.	TMC(Canada)LIMITED OTTAWA ONTARIO	
		STOCK SIZE		
		ALUM.	STRAP, SCREEN RETAINING	
		MATERIAL WEIGHT PER PC.		
		5052-H32	JPC	KA
		TYPE & TEMPER	DRAWN	ELEC. DES. APP.
		HEAT TREAT. SPEC.	FINAL APPROVAL	
		S101 CAUSTIC DIP S404 IRIDITE	CHECKED	MS10429 C
		FINISH & SPEC. NO.		

ISSUE	ITEM	CHANGED FROM	DATE	CN. NO.	DRAFTS	CHECKER	ENG. APP.
C	1	OBSCLETE NOTE DELETED	12-6-62	7820	EX	JPC	JPC
B	1	NO LONGER USED	9-4-62	7176	EX	JPC	JPC
A	1	MS10429 WAS MS1274A	8-23-60			JPC	JPC

TOLERANCES			SCALE 1:1
ALL OTHERS	DEC. DIM. ±		DIMENSIONS IN INCHES UNLESS OTHERWISE SPECIFIED
	FRAC. DIM. ±	1/64	DRILL, PUNCH, COMMERCIAL STOCK SIZES AND MANUFACTURERS TOLERANCES ARE NOT INCLUDED.
	ANGULAR DIM. ±		

IF IT IS FOUND DESIRABLE TO CHANGE ANY TOLERANCE OR OTHER DETAIL SPECIFIED ON THIS DRAWING NOTIFY THE PURCHASER PROMPTLY.

MS-10440

MAXIMUM ALLOWABLE TOLERANCES HAVE BEEN DETERMINED AND DEVIATIONS WILL BE CAUSE FOR REJECTION. REMOVE ALL BURRS AND SHARP EDGES

USED ON

MODEL

PROJECT NO.

ASS'Y. NO.

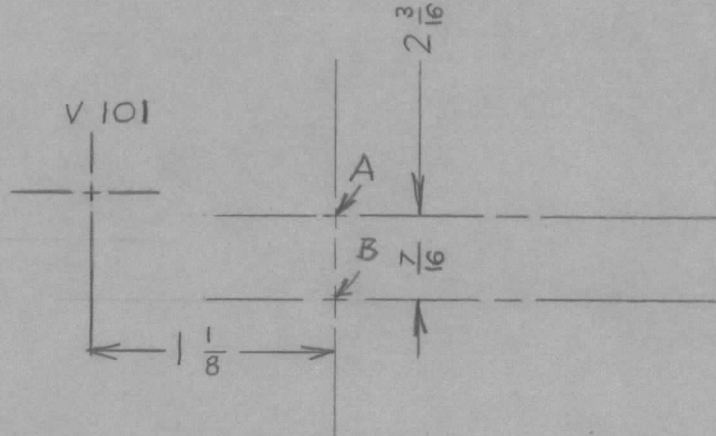
DATE

PSP-350 PAL-350

MARCH 14/60

REAR OF UNIT

SEEN FROM TOP OF UNIT



HOLE A FOR 6/32 SCREW
HOLE B 3/16 DIA

REQ.	ITEM	PART NO.	DESCRIPTION	SYMBOL
			TMC (Canada) LIMITED OTTAWA ONTARIO	
		STOCK SIZE		
			MOUNTING HOLES FOR	
		MATERIAL	RELAY K 103	
		WEIGHT PER PC.		
		TYPE & TEMPER	MK	
			DRAWN	ELEC. DES. APP. MECH. DES. APP.
		HEAT TREAT. SPEC.	CHECKED	FINAL APPROVAL
		FINISH & SPEC. NO.		MS-10440

ISSUE	ITEM	CHANGED FROM	DATE	CN. NO.	DRAFTS	CHECKER	ENG. APP.
TOLERANCES			SCALE NTS				
ALL OTHERS			DIMENSIONS IN INCHES UNLESS OTHERWISE SPECIFIED				
DEC. DIM. ± _____			DRILL, PUNCH, COMMERCIAL STOCK SIZES AND MANUFACTURERS TOLERANCES ARE NOT INCLUDED.				
FRAC. DIM. ± _____							
ANGULAR DIM. ± _____							

IF IT IS FOUND DESIRABLE TO CHANGE ANY TOLERANCE OR OTHER DETAIL SPECIFIED ON THIS DRAWING NOTIFY THE PURCHASER PROMPTLY.

MS10450

MAXIMUM ALLOWABLE TOLERANCES HAVE BEEN DETERMINED AND DEVIATIONS WILL BE CAUSE FOR REJECTION. REMOVE ALL BURRS AND SHARP EDGES

USED ON

MODEL

PROJECT NO.

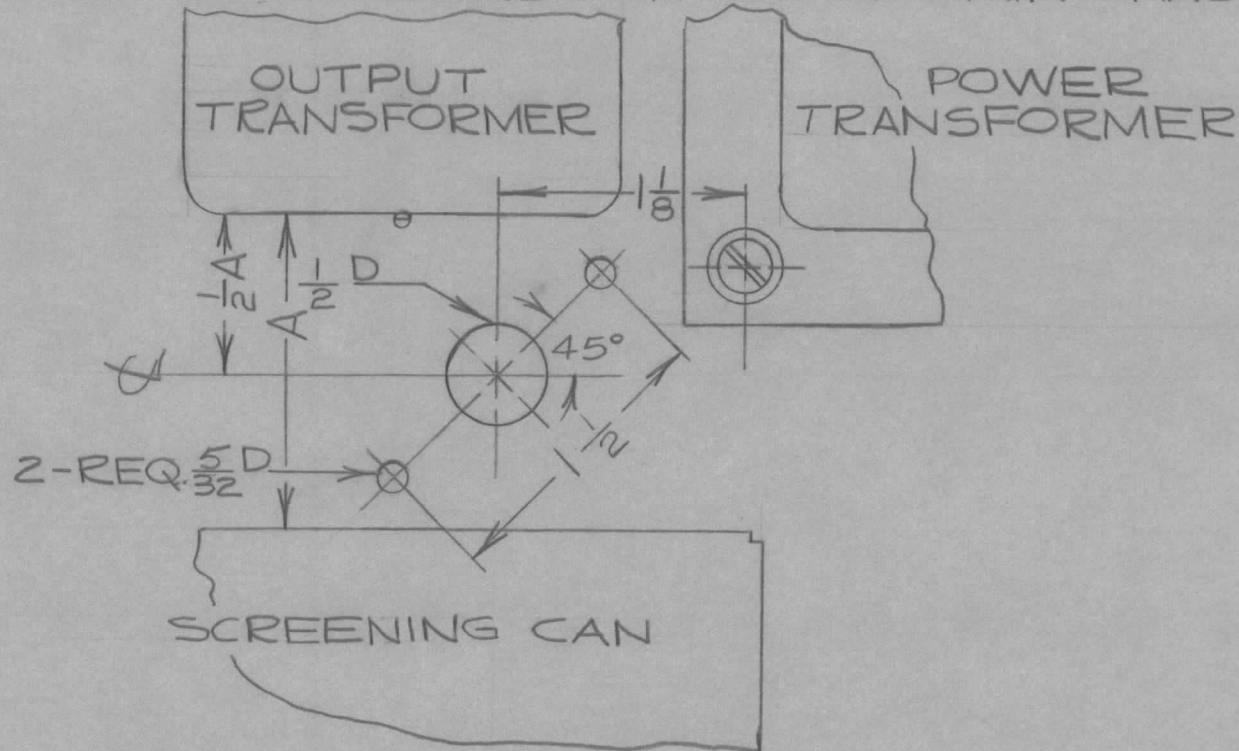
ASS'Y. NO.

DATE

GPR-90-RX.MOD.CAN.1B

APRIL 20/60

RT. HAND BACK CORNER ON TOP OF MAIN CHASSIS



NOTE: DIM. A IS TO BE MEASURED SEPARATELY ON EACH RECEIVER.

REQ.	ITEM	PART NO.	DESCRIPTION	SYMBOL
			TMC (Canada) LIMITED OTTAWA ONTARIO	
STOCK SIZE			POSITIONING OF CRYSTAL	
MATERIAL			BFO. SOCKET MTG. HOLES.	
WEIGHT PER PC.			JPC	
TYPE & TEMPER			DRAWN	
HEAT TREAT. SPEC.			ELEC. DES. APP.	
FINISH & SPEC. NO.			MECH. DES. APP.	
			CHECKED	
			FINAL APPROVAL	
			MS10450	

ISSUE	ITEM	CHANGED FROM	DATE	CN. NO.	DRAFTS	CHECKER	ENG. APP.
TOLERANCES		SCALE 1:1					
ALL OTHERS		DIMENSIONS IN INCHES UNLESS OTHERWISE SPECIFIED					
DEC. DIM. ±		DRILL, PUNCH, COMMERCIAL STOCK SIZES AND MANUFACTURERS TOLERANCES ARE NOT INCLUDED.					
FRAC. DIM. ±							
ANGULAR DIM. ±							

IF IT IS FOUND DESIRABLE TO CHANGE ANY TOLERANCE OR OTHER DETAIL SPECIFIED ON THIS DRAWING NOTIFY THE PURCHASER PROMPTLY.

MS10451

MAXIMUM ALLOWABLE TOLERANCES HAVE BEEN DETERMINED AND DEVIATIONS WILL BE CAUSE FOR REJECTION. REMOVE ALL BURRS AND SHARP EDGES

USED ON

MODEL

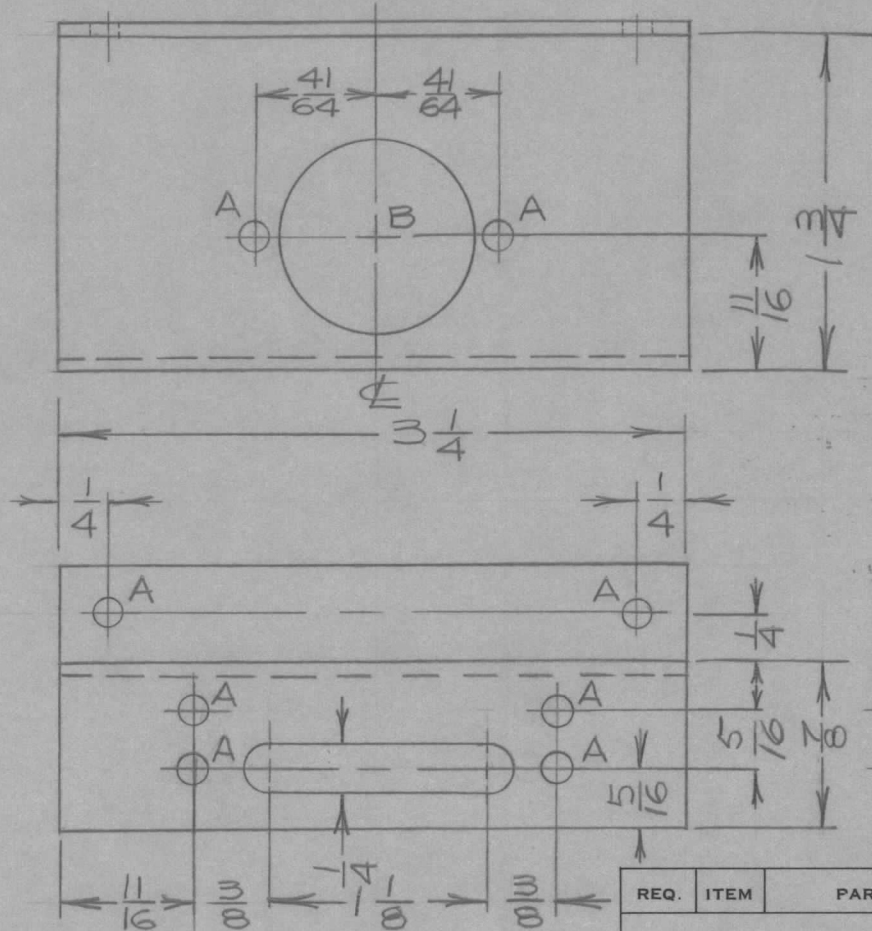
PROJECT NO.

ASS'Y. NO.

DATE

GPR-90\$ MOD. CAN. 2
GPR-90-RX.

APRIL 19/60



HOLE A = 5/32 DIA.
HOLE B = 1 DIA.

REQ.	ITEM	PART NO.	DESCRIPTION	SYMBOL
	16 GA.		TMC (Canada) LIMITED OTTAWA ONTARIO	
	STOCK SIZE			
	ALUM.		AUDIO TRANSFORMER	
	MATERIAL	WEIGHT PER PC.	MOUNTING BKT.	
	TYPE & TEMPER		JPC	R.W. Thomas
			DRAWN	ELEC. DES. APP. MECH. DES. APP.
	HEAT TREAT. SPEC.		<i>[Signature]</i>	
	FINISH & SPEC. NO.		CHECKED	FINAL APPROVAL
			MS10451	

ISSUE	ITEM	CHANGED FROM	DATE	CN. NO.	DRAFTS	CHECKER	ENG. APP.
ALL OTHERS		DEC. DIM. ± FRAC. DIM. ± 1/64 ANGULAR DIM. ±					

SCALE 1:1
DIMENSIONS IN INCHES UNLESS OTHERWISE SPECIFIED
DRILL, PUNCH, COMMERCIAL STOCK SIZES AND MANUFACTURERS TOLERANCES ARE NOT INCLUDED.

IF IT IS FOUND DESIRABLE TO CHANGE ANY TOLERANCE OR OTHER DETAIL SPECIFIED ON THIS DRAWING NOTIFY THE PURCHASER PROMPTLY.

MS10458

MAXIMUM ALLOWABLE TOLERANCES HAVE BEEN DETERMINED AND DEVIATIONS WILL BE CAUSE FOR REJECTION. REMOVE ALL BURRS AND SHARP EDGES

USED ON

MODEL

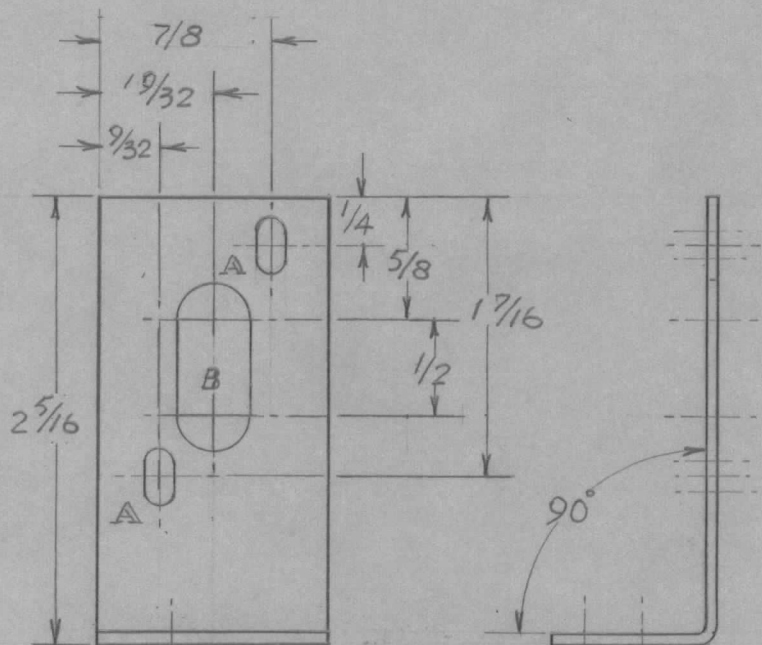
PROJECT NO.

ASS'Y. NO.

DATE

SBE-2 MOD CAN-1

24-5-'60



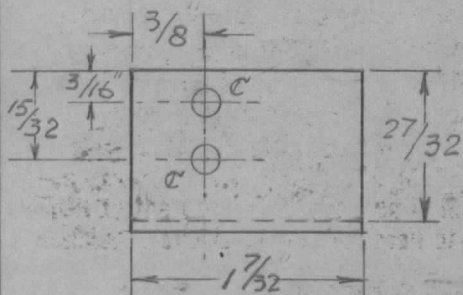
HOLE A = 9/64 x 9/32
 HOLE B = 3/8 x 7/8
 HOLE C = 9/64 DIA.

NOTICE TO PERSONS RECEIVING THIS DRAWING

THE TECHNICAL MATERIEL CORPORATION claims proprietary right in the material disclosed hereon. This drawing is issued in confidence for engineering information only and may not be reproduced or used to manufacture anything shown hereon without permission from THE TECHNICAL MATERIEL CORPORATION to the user. This drawing is loaned for mutual assistance and is subject to recall at any time.

Property of:

THE TECHNICAL MATERIEL CORPORATION
 MAMARONECK, NEW YORK



1	1	MS10458		
REQ.	ITEM	PART NO.	DESCRIPTION	SYMBOL
			-062 THK.	
		STOCK SIZE	TMC (Canada) LIMITED	
			OTTAWA ONTARIO	
		ALUM	BRACKET-MOUNTING. FILTER.	
		MATERIAL	WEIGHT PER PC.	
		TYPE & TEMPER	W.H. DAVISON	
			DRAWN	ELEC. DES. APP. MECH. DES. APP.
		HEAT TREAT. SPEC.		
		ETCH & IRIDITE		
		FINISH & SPEC. NO.		
			CHECKED	FINAL APPROVAL
				MS10458

ISSUE	ITEM	CHANGED FROM	DATE	CN. NO.	DRAFTS	CHECKER	ENG. APP.
TOLERANCES			SCALE 1:1				
ALL OTHERS	DEC. DIM. ± FRAC. DIM. ± 1/64 ANGULAR DIM. ±		DIMENSIONS IN INCHES UNLESS OTHERWISE SPECIFIED DRILL, PUNCH, COMMERCIAL STOCK SIZES AND MANUFACTURERS TOLERANCES ARE NOT INCLUDED.				

IF IT IS FOUND DESIRABLE TO CHANGE ANY TOLERANCE OR OTHER DETAIL SPECIFIED ON THIS DRAWING NOTIFY THE PURCHASER PROMPTLY.

MS10459

MAXIMUM ALLOWABLE TOLERANCES HAVE BEEN DETERMINED AND DEVIATIONS WILL BE CAUSE FOR REJECTION. REMOVE ALL BURRS AND SHARP EDGES

USED ON

MODEL

PROJECT NO.

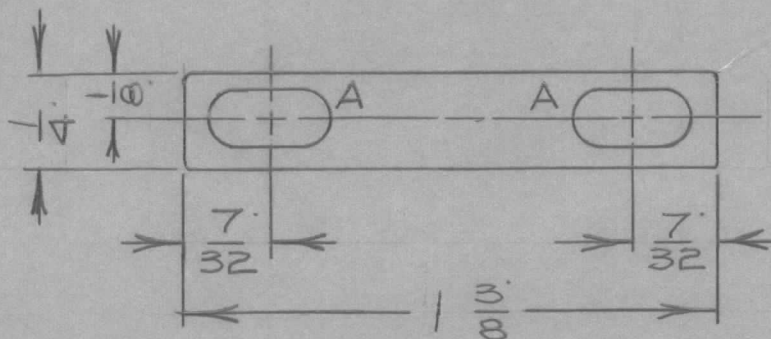
ASS'Y. NO.

DATE

CATU-1K CE5008

JUNE 8/60

HOLE A = 5/32 X 5/16 SLOT.



NOTICE TO PERSONS RECEIVING THIS DRAWING

THE TECHNICAL MATERIEL CORPORATION claims proprietary right in the material disclosed hereon. This drawing is issued in confidence for engineering information only and may not be reproduced or used to manufacture anything shown hereon without permission from THE TECHNICAL MATERIEL CORPORATION to the user. This drawing is loaned for mutual assistance and is subject to recall at any time.

Property of:

THE TECHNICAL MATERIEL CORPORATION
MAMARONECK, NEW YORK

REQ.	ITEM	PART NO.	DESCRIPTION	SYMBOL
		3/64TK.	TMC (Canada) LIMITED OTTAWA ONTARIO	
		STOCK SIZE		
		COPPER.	CAPACITOR LINK	
		MATERIAL		WEIGHT PER PC.
			J.P.C.	R. W. Thomas
			DRAWN	ELEC. DES. APP. MECH. DES. APP.
			Checked	Final Approval
			HEAT TREAT. SPEC.	
			SILVER PLATED.	
			FINISH & SPEC. NO.	
				MS10459

ISSUE	ITEM	CHANGED FROM	DATE	CN. NO.	DRAFTS	CHECKER	ENG. APP.
TOLERANCES			SCALE 2:1				
ALL OTHERS	DEC. DIM. ±		DIMENSIONS IN INCHES UNLESS OTHERWISE SPECIFIED				
	FRAC. DIM. ±		DRILL, PUNCH, COMMERCIAL STOCK SIZES AND MANUFACTURERS TOLERANCES ARE NOT INCLUDED.				
		ANGULAR DIM. ±					

IF IT IS FOUND DESIRABLE TO CHANGE ANY TOLERANCE OR OTHER DETAIL SPECIFIED ON THIS DRAWING NOTIFY THE PURCHASER PROMPTLY.

MS10460

MAXIMUM ALLOWABLE TOLERANCES HAVE BEEN DETERMINED AND DEVIATIONS WILL BE CAUSE FOR REJECTION. REMOVE ALL BURRS AND SHARP EDGES

USED ON

MODEL

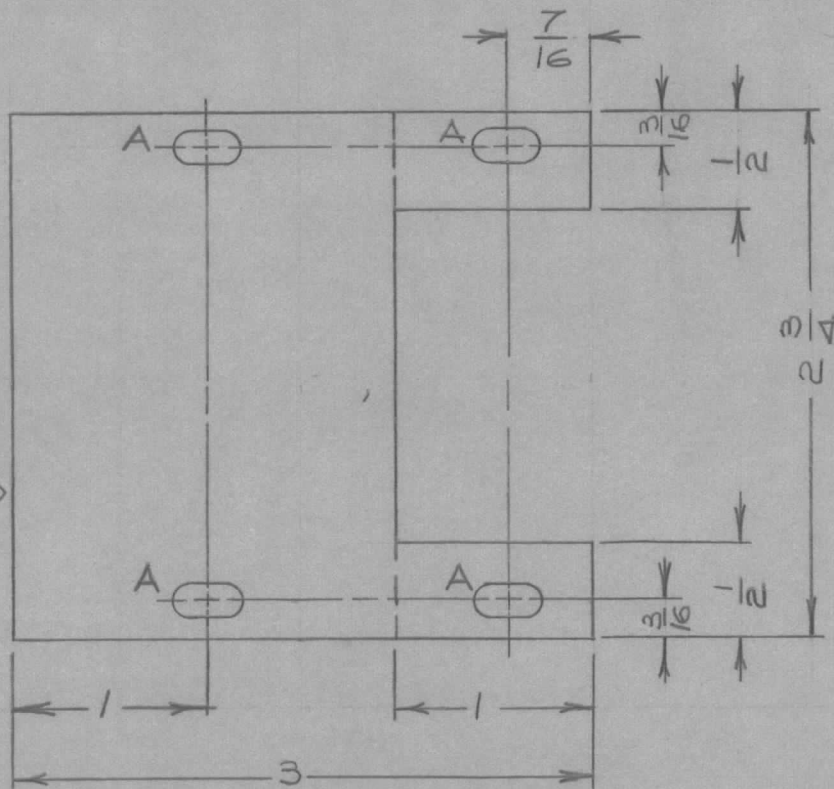
PROJECT NO.

ASS'Y. NO.

DATE

VCR. MOD. CAN. - ICE 5092

6/22/60



NOTE: BEND UP 90° ON ALL DOTTED LINES.

HOLE A = 1/64 X 1/32 SLOT.

REQ.	ITEM	PART NO.	DESCRIPTION	SYMBOL
		.064 TK.	TMC (Canada) LIMITED OTTAWA ONTARIO	
		STOCK SIZE		
		ALUM.	CAPACITOR BKT.	
		MATERIAL		
		WEIGHT PER PC.		
		TYPE & TEMPER	JPC	RW James
			DRAWN	ELEC. DES. APP. MECH. DES. APP.
			HEAT TREAT. SPEC.	FINAL APPROVAL
		ETCH & IRIDITE	CHECKED	MS10460
		FINISH & SPEC. NO.		

ISSUE	ITEM	CHANGED FROM	DATE	CN. NO.	DRAFTS	CHECKER	ENG. APP.
TOLERANCES			SCALE 1:1				
ALL OTHERS	DEC. DIM. ±		DIMENSIONS IN INCHES UNLESS OTHERWISE SPECIFIED				
	FRAC. DIM. ± 1/64						
ANGULAR DIM. ±		DRILL, PUNCH, COMMERCIAL STOCK SIZES AND MANUFACTURERS TOLERANCES ARE NOT INCLUDED.					

IF IT IS FOUND DESIRABLE TO CHANGE ANY TOLERANCE OR OTHER DETAIL SPECIFIED ON THIS DRAWING NOTIFY THE PURCHASER PROMPTLY.

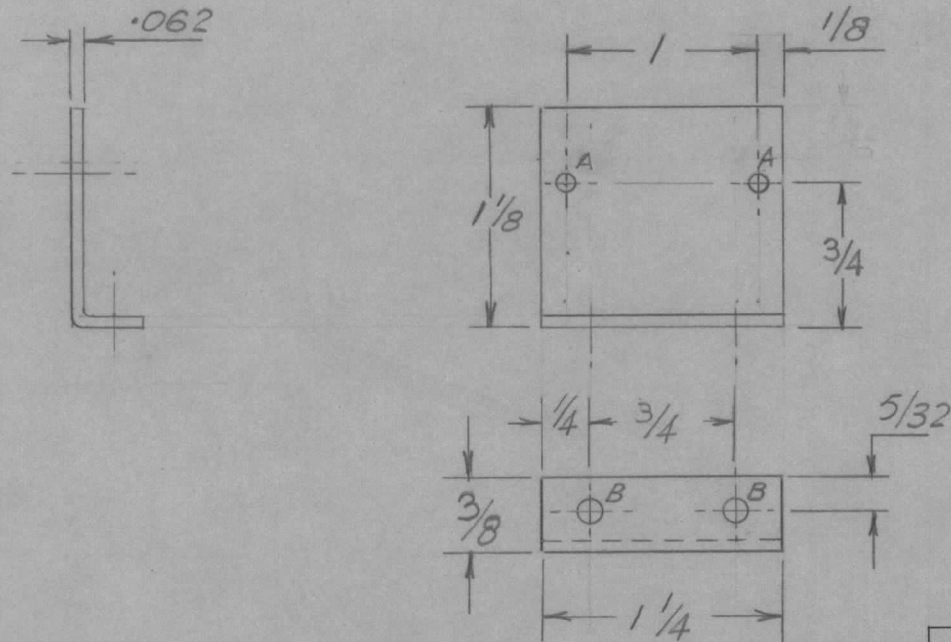
MS-10471 A

MAXIMUM ALLOWABLE TOLERANCES HAVE BEEN DETERMINED AND DEVIATIONS WILL BE CAUSE FOR REJECTION. REMOVE ALL BURRS AND SHARP EDGES

USED ON

MODEL	PROJECT NO.	ASS'Y. NO.	DATE
DA-101	CE-5107		11 AUG '60

HOLE SIZES	
A	N°42 DRILL
B	1/8 DIA.



NOTICE TO PERSONS RECEIVING THIS DRAWING

THE TECHNICAL MATERIEL CORPORATION claims proprietary right in the material disclosed hereon. This drawing is issued in confidence for engineering information only and may not be reproduced or used to manufacture anything shown hereon without permission from THE TECHNICAL MATERIEL CORPORATION to the user. This drawing is loaned for mutual assistance and is subject to recall at any time.

Property of:

THE TECHNICAL MATERIEL CORPORATION
MAMARONECK, NEW YORK

REQ.	ITEM	PART NO.	DESCRIPTION	SYMBOL
	.062		TMC (Canada) LIMITED OTTAWA ONTARIO	
	STOCK SIZE			
	ALUM. ALLOY		BRACKET-MOUNTING POTENTIOMETER	
	MATERIAL	WEIGHT PER PC.		
			WH DAVISON	M. W.
			DRAWN	ELEC. DES. APP. MECH. DES. APP.
			CHECKED	FINAL APPROVAL
			HEAT TREAT. SPEC.	
		S101 S401		MS-10471
		FINISH & SPEC. NO.		A

A		DA101 WAS LMC-10	4/11 1960		JPC	LHS	MKS
ISSUE	ITEM	CHANGED FROM	DATE	CN. NO.	DRAFTS	CHECKER	ENG. APP.
TOLERANCES		SCALE 1:1					
ALL OTHERS	DEC. DIM. ±		DIMENSIONS IN INCHES UNLESS OTHERWISE SPECIFIED				
	FRAC. DIM. ± 1/64		DRILL, PUNCH, COMMERCIAL STOCK SIZES AND MANUFACTURERS TOLERANCES ARE NOT INCLUDED.				
		ANGULAR DIM. ±					

IF IT IS FOUND DESIRABLE TO CHANGE ANY TOLERANCE OR OTHER DETAIL SPECIFIED ON THIS DRAWING NOTIFY THE PURCHASER PROMPTLY.

MS10472C

MAXIMUM ALLOWABLE TOLERANCES HAVE BEEN DETERMINED AND DEVIATIONS WILL BE CAUSE FOR REJECTION. REMOVE ALL BURRS AND SHARP EDGES

USED ON

MODEL

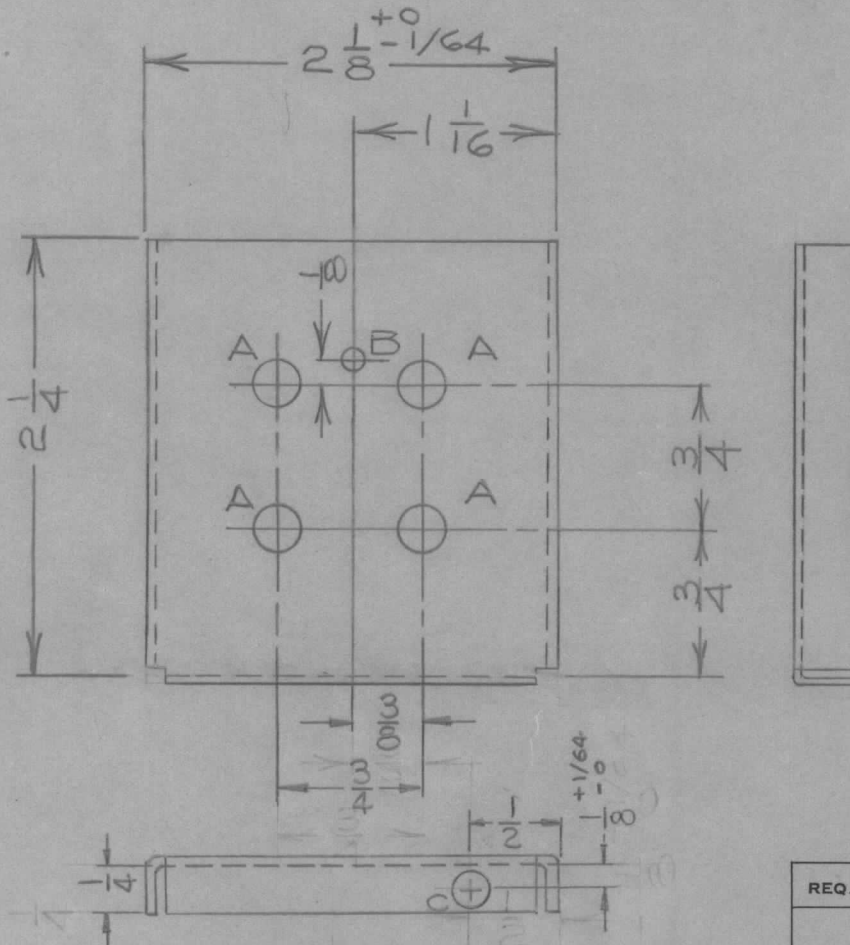
PROJECT NO.

ASS'Y. NO.

DATE

DA101 .CE5107

8/11/60



HOLE A - 9/32 DIA.
HOLE B - 5/32 DIA.
HOLE C - 3/16 DIA.

C	1	2 Lips Added On Pictorial	4-2-62	6578	JE	<i>[Signature]</i>	<i>[Signature]</i>
B		.021 WAS .031. 5/32 WAS 1/8	NOV 28/60		JPC	<i>[Signature]</i>	<i>[Signature]</i>
A		DA101 WAS LMC-10	4/11 1960		JPC	<i>[Signature]</i>	<i>[Signature]</i>
ISSUE	ITEM	CHANGED FROM	DATE	CN. NO.	DRAFTS	CHECKER	ENG. APP.

REQ.	ITEM	PART NO.	DESCRIPTION	SYMBOL
		.021 TK. SH.	TMC (Canada) LIMITED OTTAWA ONTARIO	
		STOCK SIZE		
		COPPER	BRACKET, MOUNTING	
		MATERIAL	FOR FILTER FX10011.	
		WEIGHT PER PC.		
		TYPE & TEMPER	JPC	<i>[Signature]</i>
			DRAWN	ELEC. DES. APP. MECH. DES. APP.
			<i>[Signature]</i>	<i>[Signature]</i>
		HEAT TREAT. SPEC.	CHECKED	FINAL APPROVAL
		FINISH & SPEC. NO.		

TOLERANCES			SCALE 1:1				
ALL OTHERS	DEC. DIM. ±		DIMENSIONS IN INCHES				
	FRAC. DIM. ± 1/64		UNLESS OTHERWISE SPECIFIED				
	ANGULAR DIM. ±		DRILL, PUNCH, COMMERCIAL STOCK SIZES AND MANUFACTURERS TOLERANCES ARE NOT INCLUDED.				

MS10472 C

IF IT IS FOUND DESIRABLE TO CHANGE ANY TOLERANCE OR OTHER DETAIL SPECIFIED ON THIS DRAWING NOTIFY THE PURCHASER PROMPTLY.

MS10484

MAXIMUM ALLOWABLE TOLERANCES HAVE BEEN DETERMINED AND DEVIATIONS WILL BE CAUSE FOR REJECTION. REMOVE ALL BURRS AND SHARP EDGES

USED ON

MODEL

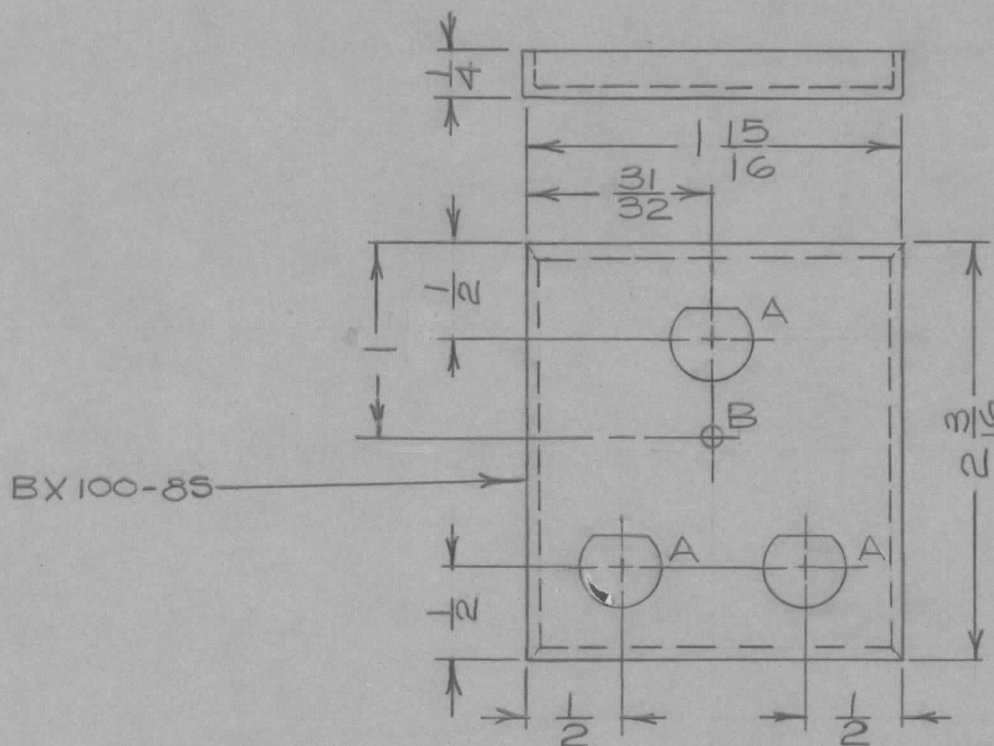
PROJECT NO.

ASS'Y. NO.

DATE

MSR

10/7/60



HOLE A = 7/16 DIA. D-HOLE.
HOLE B = 1/8 DIA.

NOTE:
EDGES TO SOLDERED &
SANDED.

REQ.	ITEM	PART NO.	DESCRIPTION	SYMBOL
			TMC (Canada) LIMITED OTTAWA ONTARIO	
		STOCK SIZE	LID, TRANSFORMER	
		MATERIAL	CAN, MACHINING	
		WEIGHT PER PC.	JPC	
		TYPE & TEMPER	DRAWN	ELEC. DES. APP. MECH. DES. APP.
		HEAT TREAT. SPEC.	CHECKED	FINAL APPROVAL
		FINISH & SPEC. NO.	TMC GREY	MS10484

ISSUE	ITEM	CHANGED FROM	DATE	CN. NO.	DRAFTS	CHECKER	ENG. APP.
TOLERANCES		SCALE 1:1					
ALL OTHERS		DEC. DIM. ±		DIMENSIONS IN INCHES UNLESS OTHERWISE SPECIFIED			
		FRAC. DIM. ± 1/64		DRILL, PUNCH, COMMERCIAL STOCK SIZES AND MANUFACTURERS TOLERANCES ARE NOT INCLUDED.			
		ANGULAR DIM. ±					

IF IT IS FOUND DESIRABLE TO CHANGE ANY TOLERANCE OR OTHER DETAIL SPECIFIED ON THIS DRAWING NOTIFY THE PURCHASER PROMPTLY.

MS10485C

MAXIMUM ALLOWABLE TOLERANCES HAVE BEEN DETERMINED AND DEVIATIONS WILL BE CAUSE FOR REJECTION. REMOVE ALL BURRS AND SHARP EDGES

USED ON

MODEL

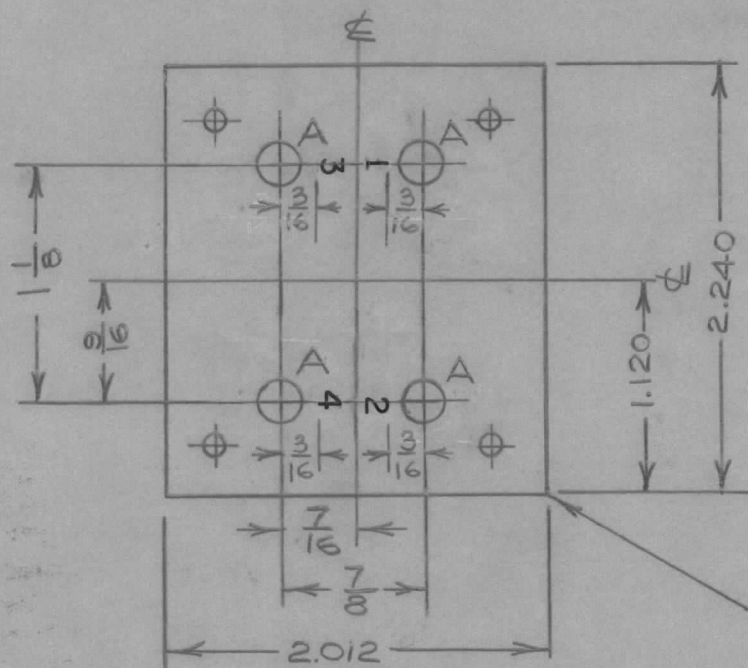
PROJECT NO.

ASS'Y. NO.

DATE

AMC 6-2/3

21/1/60



HOLE A - 11/64 DIA.

REF: BX100-85

NOTE: STAMPING TO BE 1/8" HIGH.

REQ.	ITEM	PART NO.	DESCRIPTION	SYMBOL
			TMC (Canada) LIMITED OTTAWA ONTARIO	
		STOCK SIZE		
			MACHINING, BASE FILTER	
		MATERIAL	FX 10002	
		WEIGHT PER PC.		
		TYPE & TEMPER	JPC	M.K.
			DRAWN	ELEC. DES. APP. MECH. DES. APP.
			CHECKED	FINAL APPROVAL
		HEAT TREAT. SPEC.		
		FINISH & SPEC. NO.		
			MS10485	C

ISSUE	ITEM	CHANGED FROM	DATE	CN. NO.	DRAFTS	CHECKER	ENG. APP.
C		STAMPING RELOCATED	MAY 29 1961		JPC	J.C. M.K.	
B		STAMPING ADDED	DEC 13/60		JPC	M.V.	
A		7/8 WAS 3/4 7/16 WAS 3/8	DEC 13/60		JPC	M.V.	

TOLERANCES		SCALE
ALL OTHERS	DEC. DIM. ± FRAC. DIM. ± ANGULAR DIM. ±	DIMENSIONS IN INCHES UNLESS OTHERWISE SPECIFIED DRILL, PUNCH, COMMERCIAL STOCK SIZES AND MANUFACTURERS TOLERANCES ARE NOT INCLUDED.

IF IT IS FOUND DESIRABLE TO CHANGE ANY TOLERANCE OR OTHER DETAIL SPECIFIED ON THIS DRAWING NOTIFY THE PURCHASER PROMPTLY.

MS10487

MAXIMUM ALLOWABLE TOLERANCES HAVE BEEN DETERMINED AND DEVIATIONS WILL BE CAUSE FOR REJECTION. REMOVE ALL BURRS AND SHARP EDGES

USED ON

MODEL

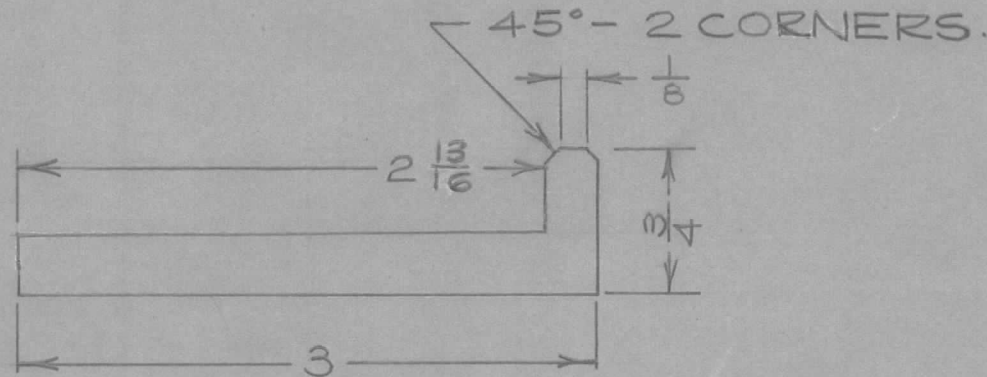
PROJECT NO.

ASS'Y. NO.

DATE

TRO74
TR155

10/11/60



NOTICE TO PERSONS RECEIVING THIS DRAWING

THE TECHNICAL MATERIEL CORPORATION claims proprietary right in the material disclosed hereon. This drawing is issued in confidence for engineering information only and may not be reproduced or used to manufacture anything shown hereon without permission from THE TECHNICAL MATERIEL CORPORATION to the user. This drawing is loaned for mutual assistance and is subject to recall at any time.

Property of:

THE TECHNICAL MATERIEL CORPORATION
MAMARONECK, NEW YORK

NOTE: REMOVE ALL SHARP EDGES.

REQ.	ITEM	PART NO.	DESCRIPTION	SYMBOL
		.0001TK ±10%	TMC (Canada) LIMITED OTTAWA ONTARIO	
		STOCK SIZE		
		BRASS	SHIELD,	
		MATERIAL	ELECTROSTATIC	
		WEIGHT PER PC.	JPC	
		TYPE & TEMPER	DRAWN	ELEC. DES. APP. MECH. DES. APP.
		HEAT TREAT. SPEC.	CHECKED	FINAL APPROVAL
		FINISH & SPEC. NO.		MS10487

ISSUE	ITEM	CHANGED FROM	DATE	CN. NO.	DRAFTS	CHECKER	ENG. APP.
TOLERANCES			SCALE 1:1				
ALL OTHERS	DEC. DIM. ± FRAC. DIM. ± ANGULAR DIM. ±		DIMENSIONS IN INCHES UNLESS OTHERWISE SPECIFIED DRILL, PUNCH, COMMERCIAL STOCK SIZES AND MANUFACTURERS TOLERANCES ARE NOT INCLUDED.				

IF IT IS FOUND DESIRABLE TO CHANGE ANY TOLERANCE OR OTHER DETAIL SPECIFIED ON THIS DRAWING NOTIFY THE PURCHASER PROMPTLY.

MS10488

MAXIMUM ALLOWABLE TOLERANCES HAVE BEEN DETERMINED AND DEVIATIONS WILL BE CAUSE FOR REJECTION. REMOVE ALL BURRS AND SHARP EDGES

USED ON

MODEL

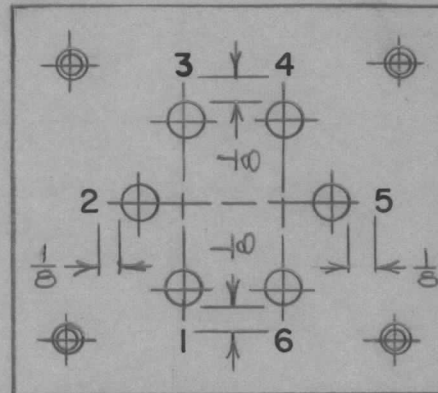
PROJECT NO.

ASS'Y. NO.

DATE

AMC 6-5

23/11/60



NOTE: STAMPING IS TO BE 1/8" HIGH.

REF - MS 10290

NOTICE TO PERSONS RECEIVING THIS DRAWING

THE TECHNICAL MATERIEL CORPORATION claims proprietary right in the material disclosed hereon. This drawing is issued in confidence for engineering information only and may not be reproduced or used to manufacture anything shown hereon without permission from THE TECHNICAL MATERIEL CORPORATION to the user. This drawing is loaned for mutual assistance and is subject to recall at any time.

Property of:

THE TECHNICAL MATERIEL CORPORATION
MAMARONECK, NEW YORK

REQ.	ITEM	PART NO.	DESCRIPTION	SYMBOL
			TMC (Canada) LIMITED OTTAWA ONTARIO	
STOCK SIZE			METAL STAMPING, BASE TRANSFORMER TRO73.	
MATERIAL WEIGHT PER PC.				
TYPE & TEMPER			JPC	
HEAT TREAT. SPEC.			DRAWN <i>[Signature]</i> ELEC. DES. APP. <i>[Signature]</i> MECH. DES. APP. <i>[Signature]</i>	
FINISH & SPEC. NO.			CHECKED <i>[Signature]</i> FINAL APPROVAL	
			MS10488	

ISSUE	ITEM	CHANGED FROM	DATE	CN. NO.	DRAFTS	CHECKER	ENG. APP.
TOLERANCES			SCALE				
ALL OTHERS	DEC. DIM. ±		DIMENSIONS IN INCHES UNLESS OTHERWISE SPECIFIED				
	FRAC. DIM. ±						
	ANGULAR DIM. ±						
			DRILL, PUNCH, COMMERCIAL STOCK SIZES AND MANUFACTURERS TOLERANCES ARE NOT INCLUDED.				

IF IT IS FOUND DESIRABLE TO CHANGE ANY TOLERANCE OR OTHER DETAIL SPECIFIED ON THIS DRAWING NOTIFY THE PURCHASER PROMPTLY.

MS10490

MAXIMUM ALLOWABLE TOLERANCES HAVE BEEN DETERMINED AND DEVIATIONS WILL BE CAUSE FOR REJECTION. REMOVE ALL BURRS AND SHARP EDGES

USED ON

MODEL

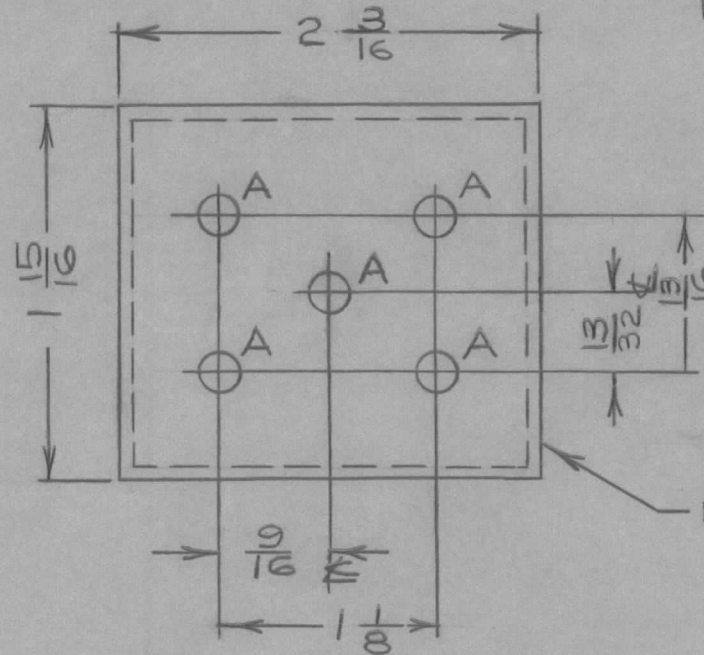
PROJECT NO.

ASS'Y. NO.

DATE

TR155

2/12/60.



HOLE A - 13/64 DIA.

REF: BX100-8

NOTICE TO PERSONS RECEIVING THIS DRAWING

THE TECHNICAL MATERIEL CORPORATION claims proprietary right in the material disclosed hereon. This drawing is issued in confidence for engineering information only and may not be reproduced or used to manufacture anything shown hereon without permission from THE TECHNICAL MATERIEL CORPORATION to the user. This drawing is loaned for mutual assistance and is subject to recall at any time.

Property of:

THE TECHNICAL MATERIEL CORPORATION
MAMARONECK, NEW YORK

REQ.	ITEM	PART NO.	DESCRIPTION	SYMBOL
			TMC (Canada) LIMITED OTTAWA ONTARIO	
		STOCK SIZE	MACHINING, XFMR TR155	
		MATERIAL	WEIGHT PER PC.	
			BASE.	
		TYPE & TEMPER	J.P.C.	<i>u. Kr.</i>
			DRAWN	ELEC. DES. APP. MECH. DES. APP.
			CHECKED	FINAL APPROVAL
		HEAT TREAT. SPEC.		
		FINISH & SPEC. NO.		
				MS10490

ISSUE	ITEM	CHANGED FROM	DATE	CN. NO.	DRAFTS	CHECKER	ENG. APP.
TOLERANCES			SCALE 1:1				
ALL OTHERS		DEC. DIM. ± FRAC. DIM. ± ANGULAR DIM. ±	DIMENSIONS IN INCHES UNLESS OTHERWISE SPECIFIED DRILL, PUNCH, COMMERCIAL STOCK SIZES AND MANUFACTURERS TOLERANCES ARE NOT INCLUDED.				

IF IT IS FOUND DESIRABLE TO CHANGE ANY TOLERANCE OR OTHER DETAIL SPECIFIED ON THIS DRAWING NOTIFY THE PURCHASER PROMPTLY.

MS10494 A

MAXIMUM ALLOWABLE TOLERANCES HAVE BEEN DETERMINED AND DEVIATIONS WILL BE CAUSE FOR REJECTION. REMOVE ALL BURRS AND SHARP EDGES

USED ON

MODEL

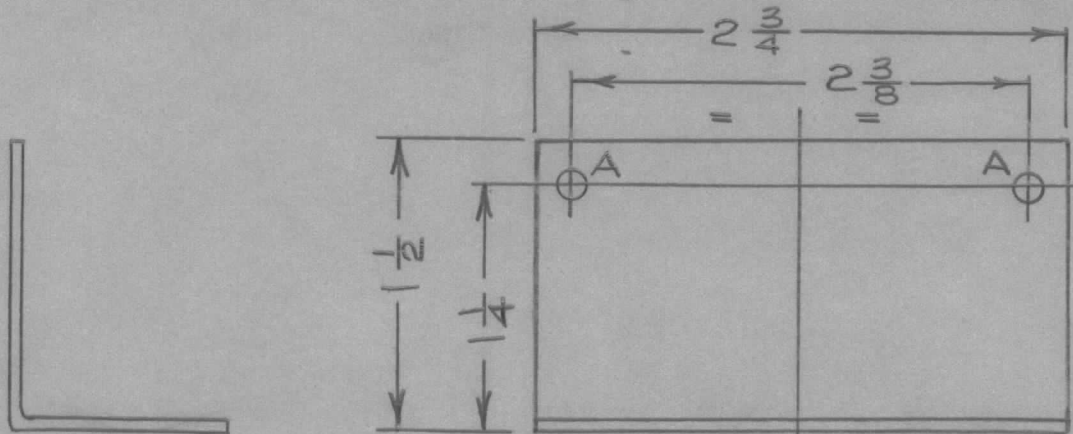
PROJECT NO.

ASS'Y. NO.

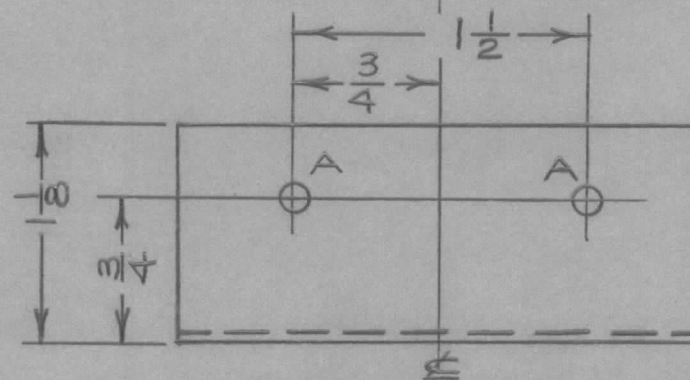
DATE

PSP-350

7/12/60



A - 1/16 DIA.



NOTICE TO PERSONS RECEIVING THIS DRAWING

THE TECHNICAL MATERIEL CORPORATION claims proprietary right in the material disclosed hereon. This drawing is issued in confidence for engineering information only and may not be reproduced or used to manufacture anything shown hereon without permission from THE TECHNICAL MATERIEL CORPORATION to the user. This drawing is loaned for mutual assistance and is subject to recall at any time.

Property of:

THE TECHNICAL MATERIEL CORPORATION
MAMARONECK, NEW YORK

REQ.	ITEM	PART NO.	DESCRIPTION	SYMBOL			
		.064 TK.	TMC (Canada) LIMITED OTTAWA ONTARIO				
		STOCK SIZE					
		ALUM.	BRACKET, CAPACITOR MTG.				
		MATERIAL					
		WEIGHT PER PC.					
A	MS10494A WAS MS1282	DEC 7/60	JPC	KH			
ISSUE	ITEM	CHANGED FROM	DATE	CN. NO.	DRAFTS	CHECKER	ENG. APP.
TOLERANCES			SCALE 1:1				
ALL OTHERS	DEC. DIM. ±		DIMENSIONS IN INCHES UNLESS OTHERWISE SPECIFIED				
	FRAC. DIM. ± 1/64		DRILL, PUNCH, COMMERCIAL STOCK SIZES AND MANUFACTURERS TOLERANCES ARE NOT INCLUDED.				
	ANGULAR DIM. ±						
		5052-H32		HEAT TREAT. SPEC.			
		S101 CAUSTIC DIP		FINISH & SPEC. NO.			
		S404 LACQUER					
				JPC			
		DRAWN		ELEC. DES. APP.		MECH. DES. APP.	
		CHECKED		FINAL APPROVAL			
				MS10494 A			

IF IT IS FOUND DESIRABLE TO CHANGE ANY TOLERANCE OR OTHER DETAIL SPECIFIED ON THIS DRAWING NOTIFY THE PURCHASER PROMPTLY.

MS10497 A

MAXIMUM ALLOWABLE TOLERANCES HAVE BEEN DETERMINED AND DEVIATIONS WILL BE CAUSE FOR REJECTION. REMOVE ALL BURRS AND SHARP EDGES

USED ON

MODEL

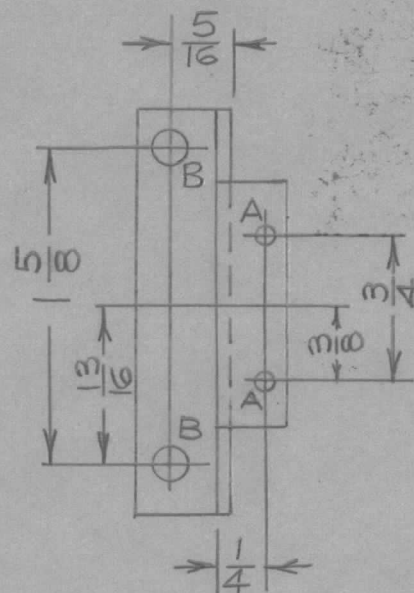
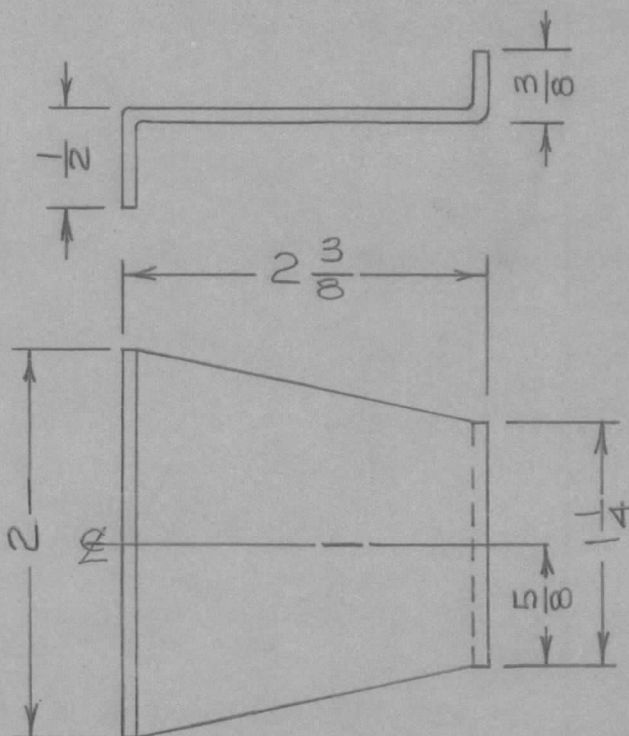
PROJECT NO.

ASS'Y. NO.

DATE

PSP-350

7/12/60



A-1/8 DIA.
B-13/64 DIA.

REQ.	ITEM	PART NO.	DESCRIPTION	SYMBOL
		064 TK.	TMC (Canada) LIMITED OTTAWA ONTARIO	
		STOCK SIZE		
		ALUM.	BRACKET CONNECTOR	
		MATERIAL		
		5052-H32	MTG.	
		TYPE & TEMPER	J.P.C.	KH
			DRAWN	ELEC. DES. APP. MECH. DES. APP.
			CHECKED	FINAL APPROVAL
		HEAT TREAT. SPEC.	MS10497 A	
		SIO1CAUSTIC DIP S404 LACQUER		
		FINISH & SPEC. NO.		

A	MS10497A WAS MS1229A	DEC 7/60	JPC	KH
ISSUE	ITEM	CHANGED FROM	DATE	CN. NO. DRAFTS CHECKER ENG. APP.

TOLERANCES		SCALE
ALL OTHERS	DEC. DIM. ± FRAC. DIM. ± ANGULAR DIM. ±	DIMENSIONS IN INCHES UNLESS OTHERWISE SPECIFIED DRILL, PUNCH, COMMERCIAL STOCK SIZES AND MANUFACTURERS TOLERANCES ARE NOT INCLUDED.

IF IT IS FOUND DESIRABLE TO CHANGE ANY TOLERANCE OR OTHER DETAIL SPECIFIED ON THIS DRAWING NOTIFY THE PURCHASER PROMPTLY.

MS10498A

MAXIMUM ALLOWABLE TOLERANCES HAVE BEEN DETERMINED AND DEVIATIONS WILL BE CAUSE FOR REJECTION. REMOVE ALL BURRS AND SHARP EDGES

USED ON

MODEL

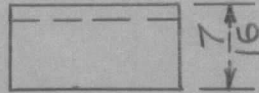
PROJECT NO.

ASS'Y. NO.

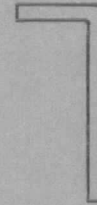
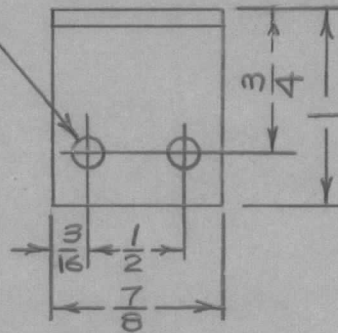
DATE

PSP-350

8/12/60



$\frac{11}{64}$ (171) DIA.
2 REQ.



NOTICE TO PERSONS RECEIVING THIS DRAWING

THE TECHNICAL MATERIEL CORPORATION claims proprietary right in the material disclosed hereon. This drawing is issued in confidence for engineering information only and may not be reproduced or used to manufacture anything shown hereon without permission from THE TECHNICAL MATERIEL CORPORATION to the user. This drawing is loaned for mutual assistance and is subject to recall at any time.

Property of:

THE TECHNICAL MATERIEL CORPORATION
MAMARONECK, NEW YORK

REQ.	ITEM	PART NO.	DESCRIPTION	SYMBOL
		.081 TK.	TMC (Canada) LIMITED OTTAWA ONTARIO	
		STOCK SIZE		
		ALUM.	BRACKET, TOP COVER	
		MATERIAL		
		5052 - H32		
		TYPE & TEMPER	JPC	KH
			DRAWN	ELEC. DES. APP. MECH. DES. APP.
			CHECKED	FINAL APPROVAL
		HEAT TREAT. SPEC.		
		S101 CAUSTIC DIP S404 LACQUER		MS10498 A
		FINISH & SPEC. NO.		

ISSUE	ITEM	CHANGED FROM	DATE	CN. NO.	DRAFTS	CHECKER	ENG. APP.
A		MS10498A WAS MS1226	DEC 8/60		JPC		KH

TOLERANCES		SCALE
ALL OTHERS	DEC. DIM. ± FRAC. DIM. ± ANGULAR DIM. ±	1:1

DIMENSIONS IN INCHES UNLESS OTHERWISE SPECIFIED
DRILL, PUNCH, COMMERCIAL STOCK SIZES AND MANUFACTURERS TOLERANCES ARE NOT INCLUDED.

IF IT IS FOUND DESIRABLE TO CHANGE ANY TOLERANCE OR OTHER DETAIL SPECIFIED ON THIS DRAWING NOTIFY THE PURCHASER PROMPTLY.

MS10499 B

MAXIMUM ALLOWABLE TOLERANCES HAVE BEEN DETERMINED AND DEVIATIONS WILL BE CAUSE FOR REJECTION. REMOVE ALL BURRS AND SHARP EDGES

REQ
REV
UNIT

USED ON

MODEL

PROJECT NO.

ASS'Y. NO.

DATE

PSP-350

7/12/60

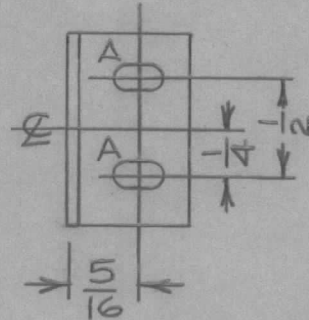
2 PSP-350A

NOTICE TO PERSONS RECEIVING THIS DRAWING

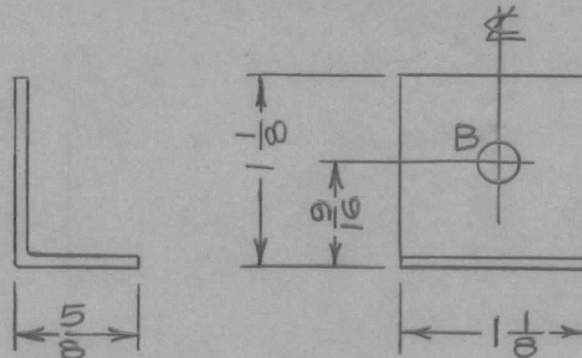
THE TECHNICAL MATERIEL CORPORATION claims proprietary right in the material disclosed hereon. This drawing is issued in confidence for engineering information only and may not be reproduced or used to manufacture anything shown hereon without permission from THE TECHNICAL MATERIEL CORPORATION to the user. This drawing is loaned for mutual assistance and is subject to recall at any time.

Property of:

THE TECHNICAL MATERIEL CORPORATION
MAMARONECK, NEW YORK



A - $\frac{11}{64} \times \frac{11}{32}$ SLOT.
B - $\frac{7}{32}$ (.218) D.



REQ.	ITEM	PART NO.	DESCRIPTION	SYMBOL
		.064 TK.	TMC (Canada) LIMITED OTTAWA ONTARIO	
		STOCK SIZE		
		ALUM.	BRACKET, RESISTOR	
		MATERIAL	WEIGHT PER PC.	
		5052 H32	MOUNTING	
		TYPE & TEMPER	JPC	KH
		HEAT TREAT. SPEC.	DRAWN	ELEC. DES. APP. MECH. DES. APP.
		FINISH & SPEC. NO.	CHECKED	FINAL APPROVAL
		5404 YEL IRIDITE		MS10499 B

ISSUE	ITEM	CHANGED FROM	DATE	CN. NO.	DRAFTS	CHECKER	ENG. APP.
B	2	PSP-350A - ADDED	11/6/63	10350	KA	MA	KA
A	1	FINISH REVISED & UPDATED	DEC 7/60			JPC	
		MS10499A WAS MS1227C					

TOLERANCES		SCALE :
ALL OTHERS	DEC. DIM. ± FRAC. DIM. ± ANGULAR DIM. ±	DIMENSIONS IN INCHES UNLESS OTHERWISE SPECIFIED DRILL, PUNCH, COMMERCIAL STOCK SIZES AND MANUFACTURERS TOLERANCES ARE NOT INCLUDED.