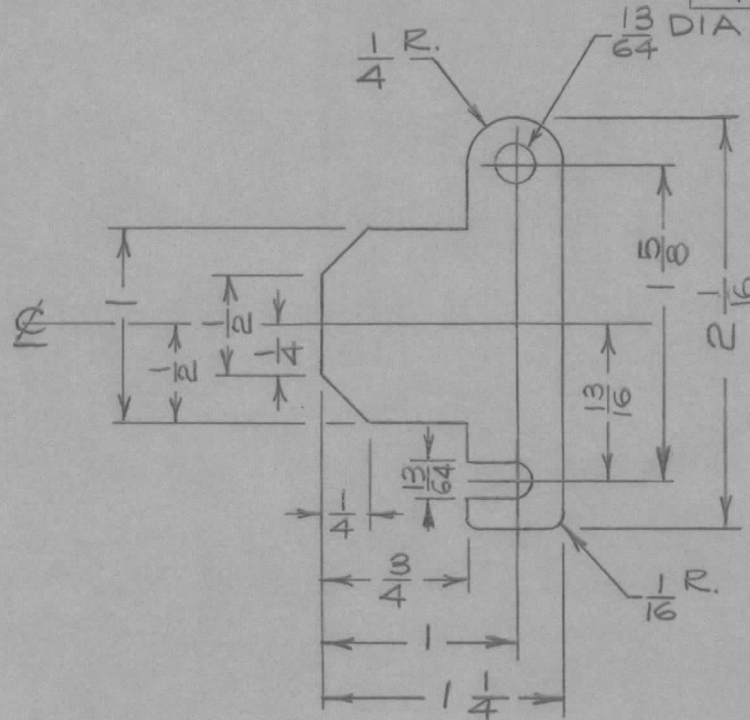


IF IT IS FOUND DESIRABLE TO CHANGE ANY TOLERANCE OR OTHER DETAIL SPECIFIED ON THIS DRAWING NOTIFY THE PURCHASER PROMPTLY.

MS10495 D

MAXIMUM ALLOWABLE TOLERANCES HAVE BEEN DETERMINED AND DEVIATIONS WILL BE CAUSE FOR REJECTION. REMOVE ALL BURRS AND SHARP EDGES

REQD PER UNIT	USED ON			
	MODEL	PROJECT NO.	ASS'Y. NO.	DATE
1	PSP-350			7/12/60
1	PSP-350A			



ISSUE	ITEM	CHANGED FROM	DATE	CN. NO.	DRAFTS	CHECKER	ENG. APP.
D	1	UPDATED & CLARIFIED DRAWING.	11/8/63	10349	HD	mmk	JPC
C	1	2 1/16 DIM WAS 2 1/8	10-12-62	7431	GH	JPC	JPC
B	1	SPEC. ADDED	FEB 23/61			JPC	JPC
A	1	MS10495A WAS MS1231	DEC 7/60			JPC	JPC

REQ.	ITEM	PART NO.	DESCRIPTION	SYMBOL
		.081 TK	TMC (Canada) LIMITED OTTAWA ONTARIO	
		STOCK SIZE	PLATE, CONNECTOR	
		ALUM.	LOCKING	
		MATERIAL	JPC	
		WEIGHT PER PC.	5052 - H32	
		TYPE & TEMPER	JPC	
		HEAT TREAT. SPEC.	DRAWN	
		FINISH & SPEC. NO.	ELEC. DES. APP.	
			MECH. DES. APP.	
			CHECKED	
			FINAL APPROVAL	
			MS10495 D	

TOLERANCES		SCALE
ALL OTHERS	DEC. DIM. ± FRAC. DIM. ± ANGULAR DIM. ±	DIMENSIONS IN INCHES UNLESS OTHERWISE SPECIFIED DRILL, PUNCH, COMMERCIAL STOCK SIZES AND MANUFACTURERS TOLERANCES ARE NOT INCLUDED.