

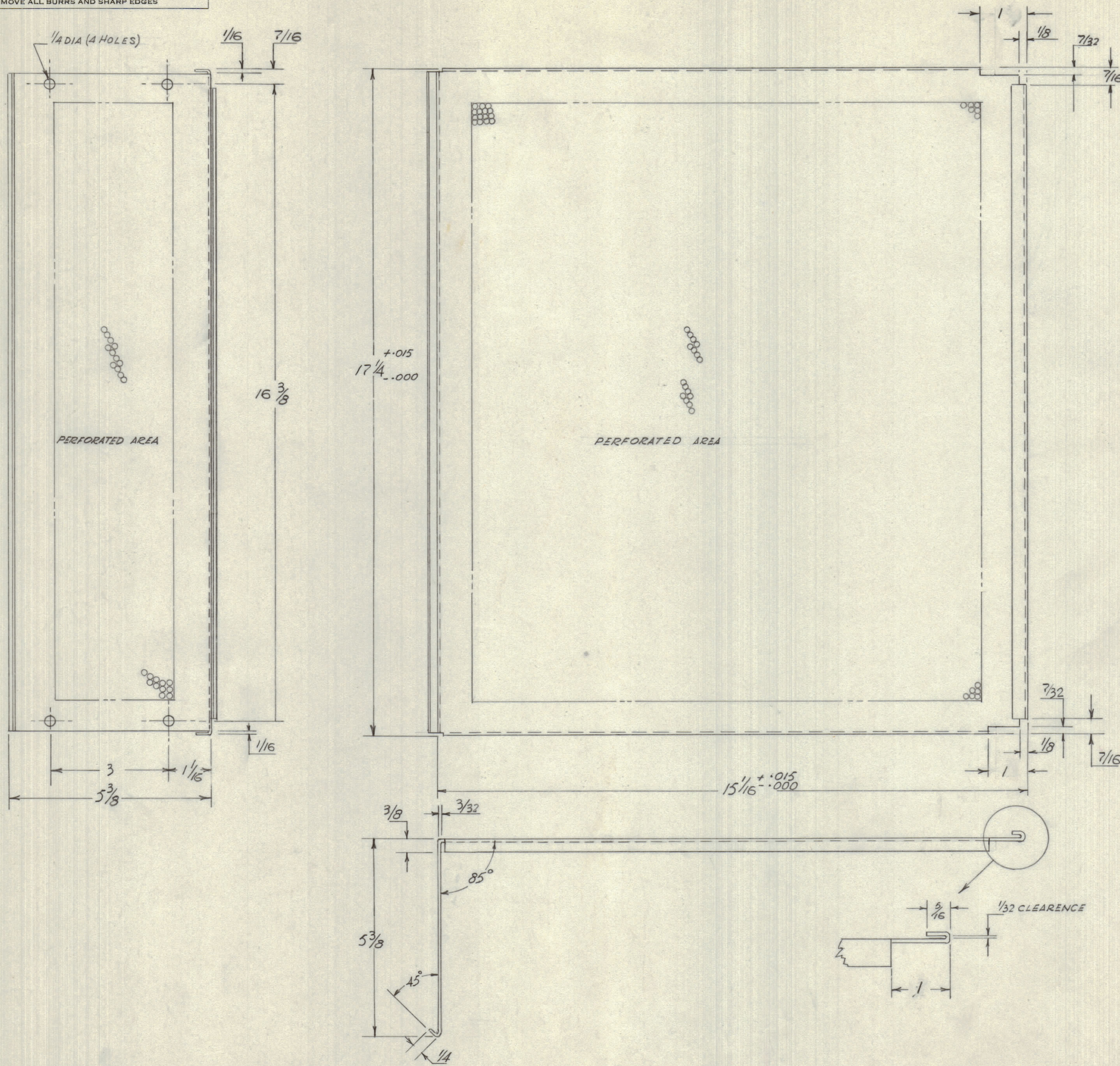
IF IT IS FOUND DESIRABLE TO CHANGE ANY TOLERANCE OR OTHER DETAIL SPECIFIED ON THIS DRAWING NOTIFY THE PURCHASER PROMPTLY.

MAXIMUM ALLOWABLE TOLERANCES HAVE BEEN DETERMINED AND DEVIATIONS WILL BE CAUSE FOR REJECTION. REMOVE ALL BURRS AND SHARP EDGES

NOTICE TO PERSONS RECEIVING THIS DRAWING

THE TECHNICAL MATERIEL CORPORATION claims proprietary right in the material disclosed hereon. This drawing is issued in confidence for engineering information only and may not be reproduced or used to manufacture anything shown hereon without permission from THE TECHNICAL MATERIEL CORPORATION to the user. This drawing is loaned for mutual assistance and is subject to recall at any time.

Property of:
THE TECHNICAL MATERIEL CORPORATION
MAMARONECK, NEW YORK



NOTE
PERFORATION BORDERS APPROX. 7/8"
(SEE REF)

MS-10492
A

REF: MS10502A BLANK SIZE & PERFORATION

REQ.	ITEM	PART NO.	DESCRIPTION	SYMBOL
		.051 TK.	TMC (Canada) LIMITED	
		STOCK SIZE	OTTAWA ONTARIO	
		ALUM ALLOY	COVER TOP	
		MATERIAL	PSP-350	
		5052 H32		
		TYPE & TEMPER	WHD AVISON	KH
		HEAT TREAT. SPEC.	DRAWN	ELEC. DES. APP. MECH. DES. APP.
		S101 & S401	CHECKED	FINAL APPROVAL
		FINISH & SPEC. NO.		MS-10492 A

ISSUE	ITEM	CHANGED FROM	DATE	CN. NO.	DRAFTS	CHECKER	ENG. APP.
A	1	1" WAS 3/4 MS-10492 WAS MS-1221	6 DEC 1960		WHD		KH

TOLERANCES SCALE: HALF

ALL OTHERS: DEC. DIM. ± .015
FRAC. DIM. ± 1/64
ANGULAR DIM. ±

DRILL, PUNCH, COMMERCIAL STOCK SIZES AND MANUFACTURERS TOLERANCES ARE NOT INCLUDED.

MODEL	PROJECT NO.	ASS'Y. NO.	DATE
PSP-350	PAL-350		6 DEC 1960

USED ON