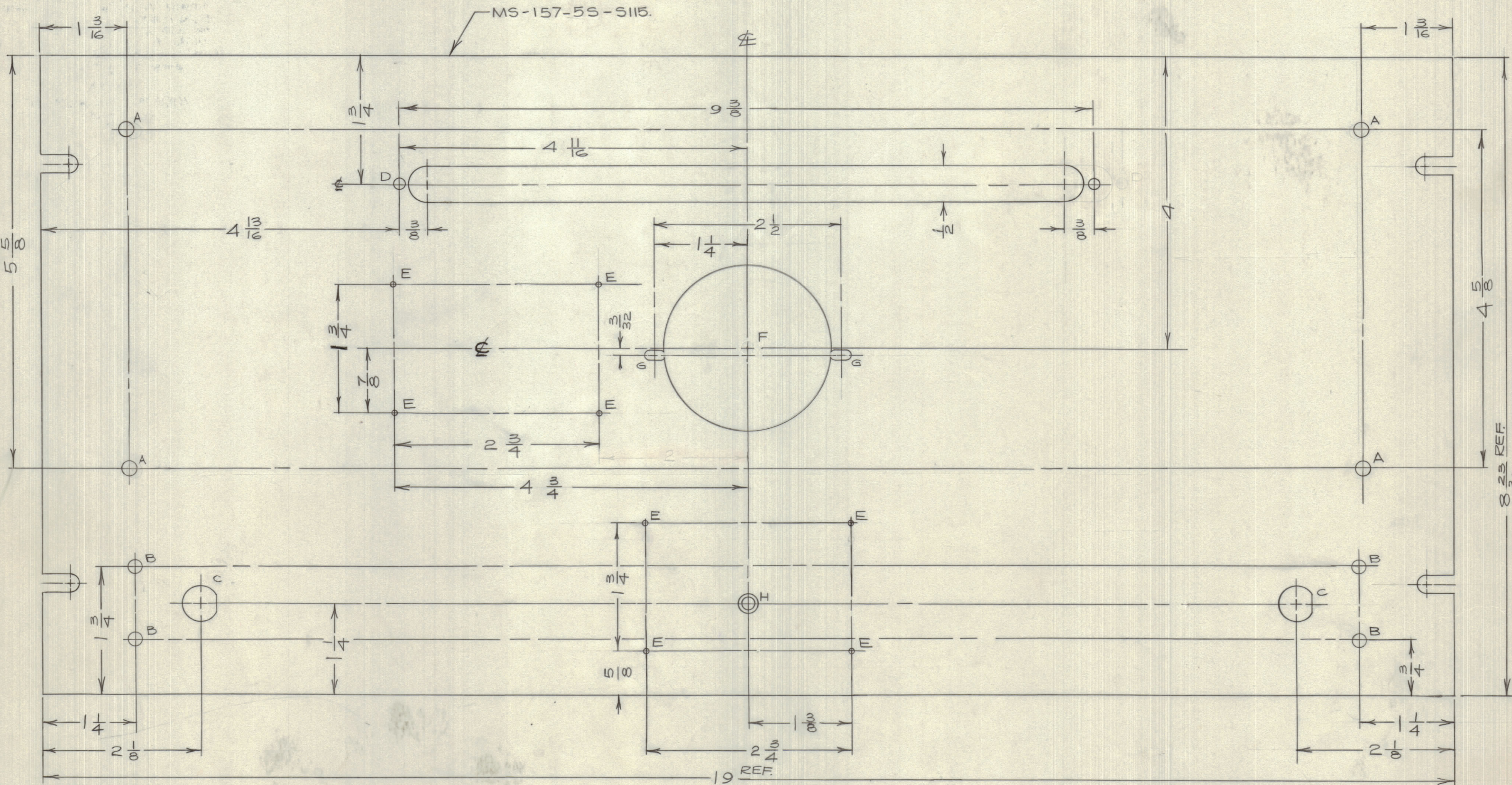


IF IT IS FOUND DESIRABLE TO CHANGE ANY TOLERANCE OR OTHER DETAIL SPECIFIED ON THIS DRAWING NOTIFY THE PURCHASER PROMPTLY.

MAXIMUM ALLOWABLE TOLERANCES HAVE BEEN DETERMINED AND DEVIATIONS WILL BE CAUSE FOR REJECTION. REMOVE ALL BURRS AND SHARP EDGES



MS10481

8 23/32 REF.

19 REF.

**NOTICE TO PERSONS RECEIVING THIS DRAWING**

THE TECHNICAL MATERIEL CORPORATION claims proprietary right in the material disclosed hereon. This drawing is issued in confidence for engineering information only and may not be reproduced or used to manufacture anything shown hereon without permission from THE TECHNICAL MATERIEL CORPORATION to the user. This drawing is loaned for mutual assistance and is subject to recall at any time.

Property of:

THE TECHNICAL MATERIEL CORPORATION  
MAMARONECK, NEW YORK

- HOLE A - 13/64 D.
- HOLE B - 3/16 D.
- HOLE C - 1/2 "D."
- HOLE D - 5/32
- HOLE E - #47 DRILL (.0785) D.
- HOLE F - 2 - 1/4 D.
- HOLE G - 9/64 X 9/32 SLOT.
- HOLE H - 8-32 DRILL # CSK.

ISSUE	ITEM	CHANGED FROM	DATE	CN. NO.	DRAFTS	CHECKER	ENG. APP.
TOLERANCES		SCALE: 1:1					
ALL OTHERS	DEC. DIM. ±	DRILL, PUNCH, COMMERCIAL STOCK					
	FRAC. DIM. ±	SIZES AND MANUFACTURERS					
	ANGULAR DIM. ±	TOLERANCES ARE NOT INCLUDED.					

CD CR	CE 5082		23/9/60
CD CL			
MODEL	PROJECT No.	ASS'Y. No.	DATE
USED ON			

REQ.	ITEM	PART No.	DESCRIPTION	SYMBOL
STOCK SIZE			TMC (Canada) LIMITED	
			OTTAWA ONTARIO	
MATERIAL			FRONT PANEL	
WEIGHT PER PC.			CDCS-1	
TYPE & TEMPER			JPC	
DRAWN			ELEC. DES. APP. MECH. DES. APP.	
CHECKED			FINAL APPROVAL	
HEAT TREAT. SPEC.			ETCH, IRIDITE & TMC GREY.	
FINISH & SPEC. No.			MS10481	