

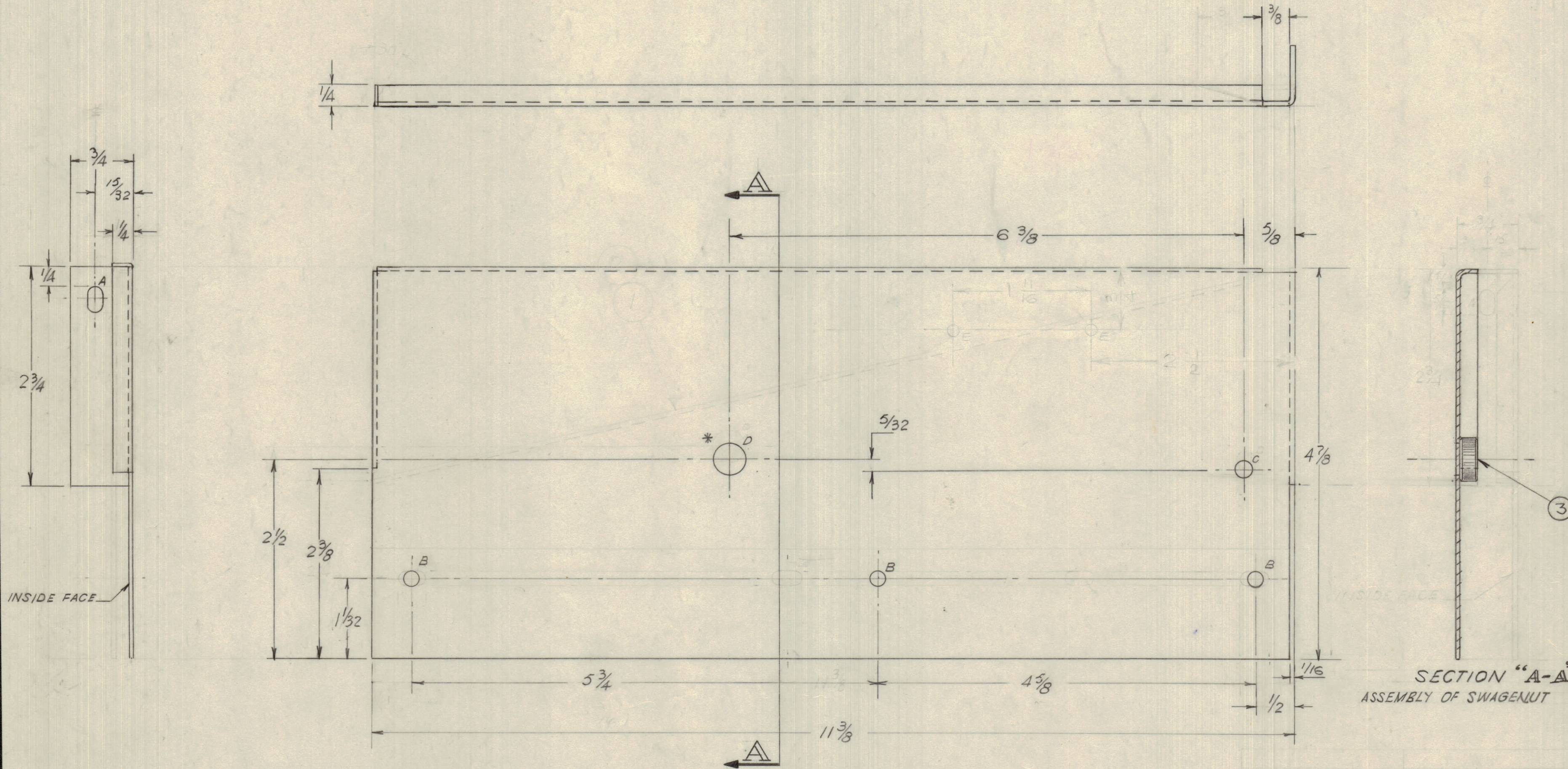
IF IT IS FOUND DESIRABLE TO CHANGE ANY TOLERANCE OR OTHER DETAIL SPECIFIED ON THIS DRAWING NOTIFY THE PURCHASER PROMPTLY.

MAXIMUM ALLOWABLE TOLERANCES HAVE BEEN DETERMINED AND DEVIATIONS WILL BE CAUSE FOR REJECTION. REMOVE ALL BURRS AND SHARP EDGES

NOTICE TO PERSONS RECEIVING THIS DRAWING

THE TECHNICAL MATERIEL CORPORATION claims proprietary right in the material disclosed hereon. This drawing is issued in confidence for engineering information only and may not be reproduced or used to manufacture anything shown hereon without permission from THE TECHNICAL MATERIEL CORPORATION to the user. This drawing is loaned for mutual assistance and is subject to recall at any time.

Property of:
THE TECHNICAL MATERIEL CORPORATION
MAMARONECK, NEW YORK



C MS10473

C	3	FINISH W/SLIT # S404 TYPE 8 TEMPER ADD., REQ ADD. 2" E-HOLES DELE.	9.1.64	12262	JAB	WP	MM
B	2	E HOLES ADDED SLOTS WERE 3/16 X 5/16	DEC 12/60		JPC		M.K.
A	1	BRACKET REDESIGNED BOM ITEM 3 ADDED	22 SEPT 1960		WHD	Lenk	M.K.

HOLE SIZES	REQ
A 13/64 X 13/32 SLOT	1
B 3/16 DIA	3
C 7/32 DIA.	1
D .416 ± .003 DIA	1
E 1/16 DIA	

NOTE:
 • LH DRAWN
 RH BENT OPPOSITE
 * • SWAGENUT TO BE MOUNTED FROM INSIDE
 • SWAGENUT TO BE MOUNTED AFTER BRACKET HAS BEEN ETCHED & IRIDITED
 • CIRCLES W/ST. DKT. ONLY.

2	3	NT-129-524-4	SWAGENUT	
1	2	MS-10473L	BRACKET SIDE LH	
1	1	MS-10473R	BRACKET SIDE RH	
REQ.	ITEM	PART NO.	DESCRIPTION	SYMBOL
		.064 TK.		
		ALUM. ALLOY	TMC (Canada) LIMITED OTTAWA ONTARIO	
		5052-H32	BRACKET-SIDE	
		WHD AVISON		
		DRAWN	ELEC. DES. APP.	MECH. DES. APP.
		HEAT TREAT. SPEC.		
		S404 YEL IRIDITE		
		FINISH & SPEC. NO.		

DA-101	CE-5107	15 AUG 1960	
MODEL	PROJECT NO.	ASS'Y. No.	DATE