

IF IT IS FOUND DESIRABLE TO CHANGE ANY TOLERANCE OR OTHER DETAIL SPECIFIED ON THIS DRAWING NOTIFY THE PURCHASER PROMPTLY.

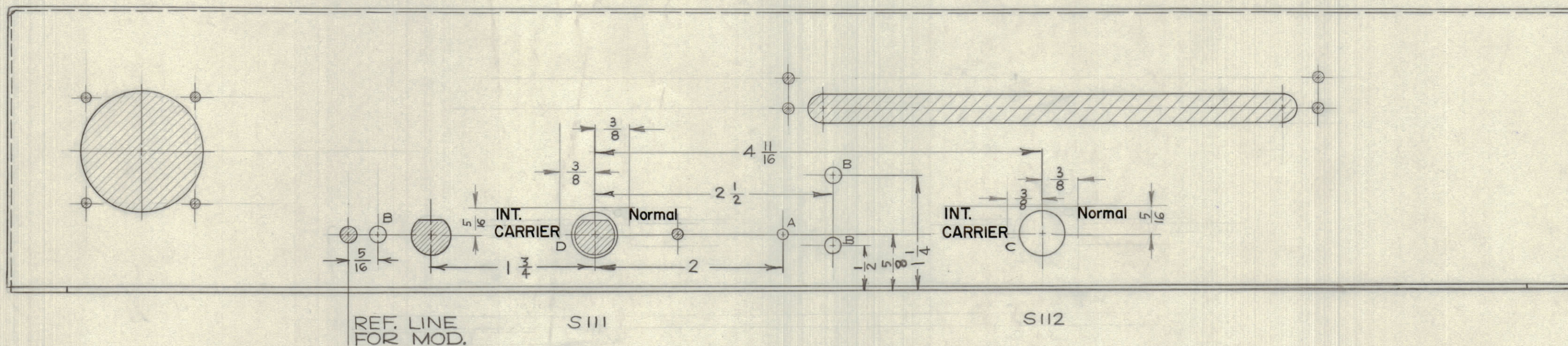
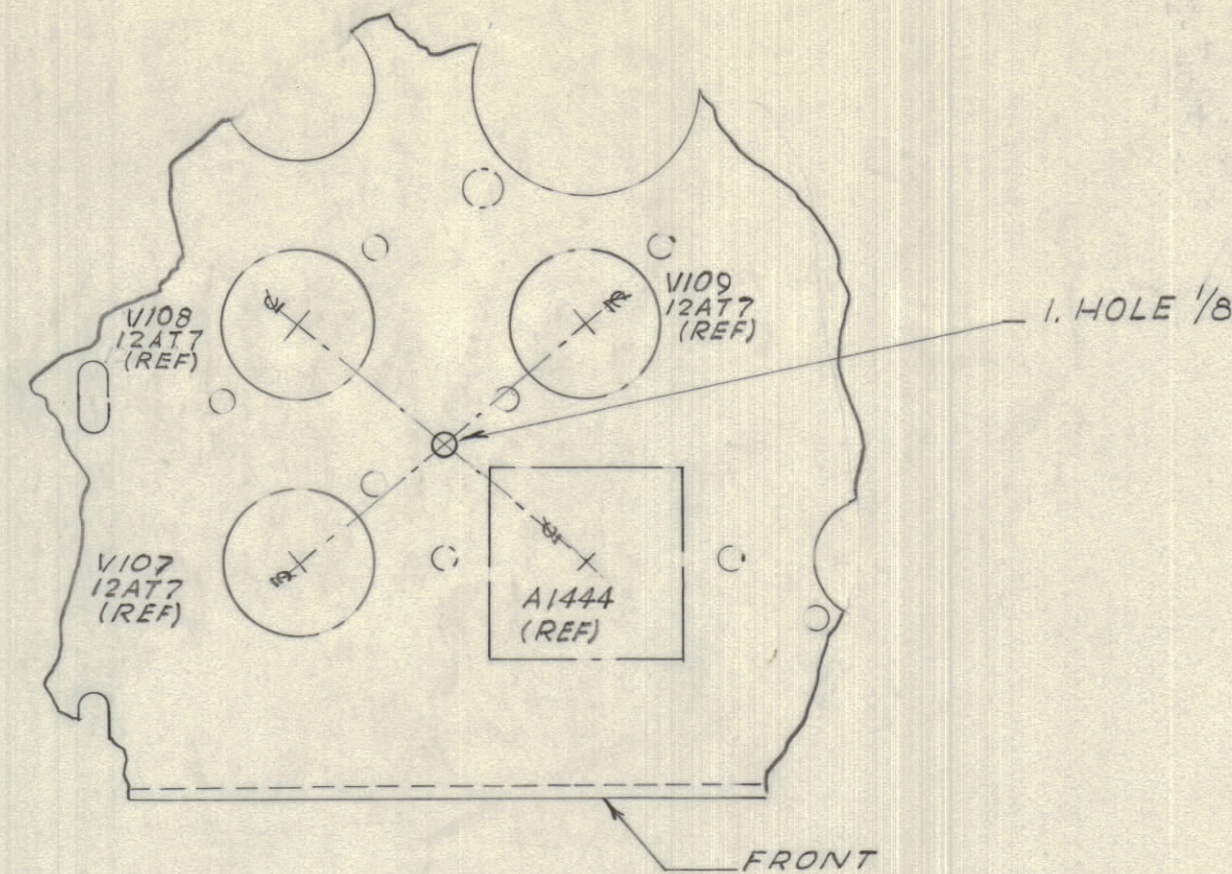
MAXIMUM ALLOWABLE TOLERANCES HAVE BEEN DETERMINED AND DEVIATIONS WILL BE CAUSE FOR REJECTION. REMOVE ALL BURRS AND SHARP EDGES

NOTICE TO PERSONS RECEIVING THIS DRAWING

THE TECHNICAL MATERIEL CORPORATION claims proprietary right in the material disclosed hereon. This drawing is issued in confidence for engineering information only and may not be reproduced or used to manufacture anything shown hereon without permission from THE TECHNICAL MATERIEL CORPORATION to the user. This drawing is loaned for mutual assistance and is subject to recall at any time.

Property of:

THE TECHNICAL MATERIEL CORPORATION
MAMARONECK, NEW YORK



HOLES TO BE DRILLED

- HOLE A 1/8 DIA
- HOLE B 5/32 DIA
- HOLE C 1/2 DIA
- HOLE D 1/2 DIA (WAS 7/16" DIA HOLE)

NOTE

1. HOLES WITHOUT SECTION LINES ARE ADDED.
2. STAMPING IS BLACK & 1/8 HIGH.

MS-10456 A

A	SCRAP VIEW ADDED	25-5-60	WHD		
ISSUE	ITEM	CHANGED FROM	DATE	CN. NO.	DRAFTS CHECKER ENG. APP.
TOLERANCES		SCALE: 1:1			
ALL OTHERS	DEC. DIM. ± FRAC. DIM. ± ANGULAR DIM. ±	DRILL, PUNCH, COMMERCIAL STOCK SIZES AND MANUFACTURERS TOLERANCES ARE NOT INCLUDED.			

SBE-2 (CAN 1) CE 5075

MAY 12/60

MODEL	PROJECT No.	ASS'Y. No.	DATE
USED ON			

REQ.	ITEM	PART No.	DESCRIPTION	SYMBOL
			TMC (Canada) LIMITED OTTAWA ONTARIO	
			CHASSIS MODIFICATION FOR SBE-2 (CAN-1)	
		STOCK SIZE		
		MATERIAL	WEIGHT PER PC.	
		TYPE & TEMPER		
		HEAT TREAT. SPEC.		
		FINISH & SPEC. No.		
		DRAWN	ELEC. DES. APP.	MECH. DES. APP.
		CHECKED	FINAL APPROVAL	
		MS-10456 A		