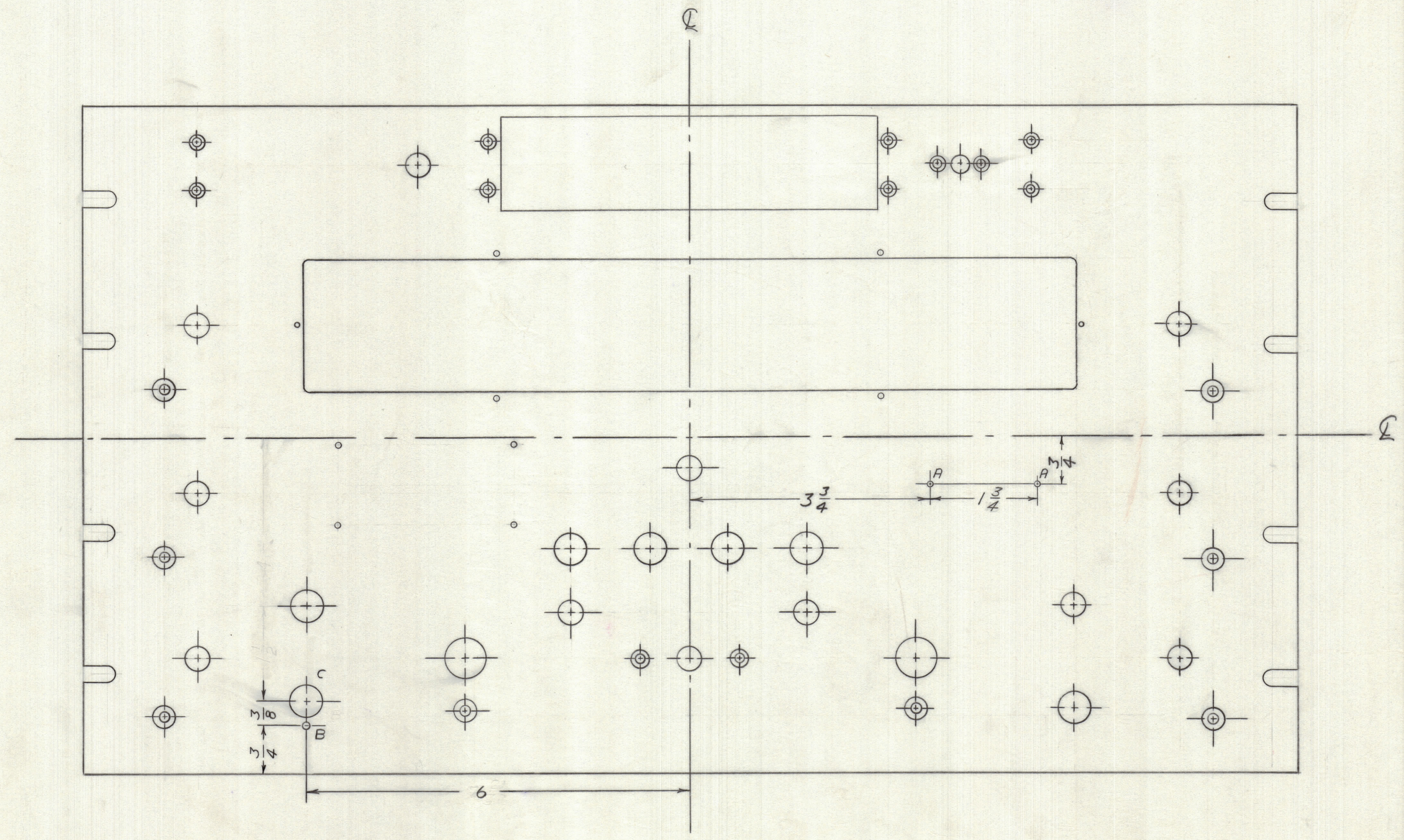


IF IT IS FOUND DESIRABLE TO CHANGE ANY TOLERANCE OR OTHER DETAIL SPECIFIED ON THIS DRAWING NOTIFY THE PURCHASER PROMPTLY.		DIMENSIONS IN INCHES UNLESS OTHERWISE SPECIFIED					
MAXIMUM ALLOWABLE TOLERANCES HAVE BEEN DETERMINED AND DEVIATIONS WILL BE CAUSE FOR REJECTION. REMOVE ALL BURRS AND SHARP EDGES.							
ISSUE	ITEM	CHANGED FROM	DATE	CH. NO.	DRAFTS	CHECKER	ENG. APP.
A		REDRAWN TO SHOW ALL FRONT PANEL HOLES FOR NP-100B6 ADDED	10/2/65	RB	RD		

REV.	ITEM	PART NO.	DESCRIPTION	SYMBOL
------	------	----------	-------------	--------



**HOLES**  
HOLE A - NO. 49 (.073) D - 2 REQ.  
HOLE B - NO. 31 (.120) D - 1 REQ.  
HOLE C - 1/2 (.500) D - 1 REQ.

TOLERANCES		SCALE
ALL OTHERS	DEC DIM ± FRAC DIM ± ANGULAR DIM ±	DRILL, PUNCH, COMMERCIAL STOCK SIZES AND MANUFACTURERS TOLERANCES ARE NOT INCLUDED.

GPR 90	PROJECT NO.	ASS'Y. NO.	DATE
GPR 90 RX	MOD CANIB		7/8/63
GPR 90 RXD			
MODEL	PROJECT NO.	ASS'Y. NO.	DATE

STOCK SIZE		TMC (Canada) LIMITED OTTAWA ONTARIO	
MATERIAL		FRONT PANEL (MOD.)	
TYPE & TEMPER	R BARE	DRAWN	MECH. DES. APP.
HEAT TREAT. SPEC.		CHECKED	FINAL APPROVAL
FINISH & SPEC. NO.		MS-10441 A	