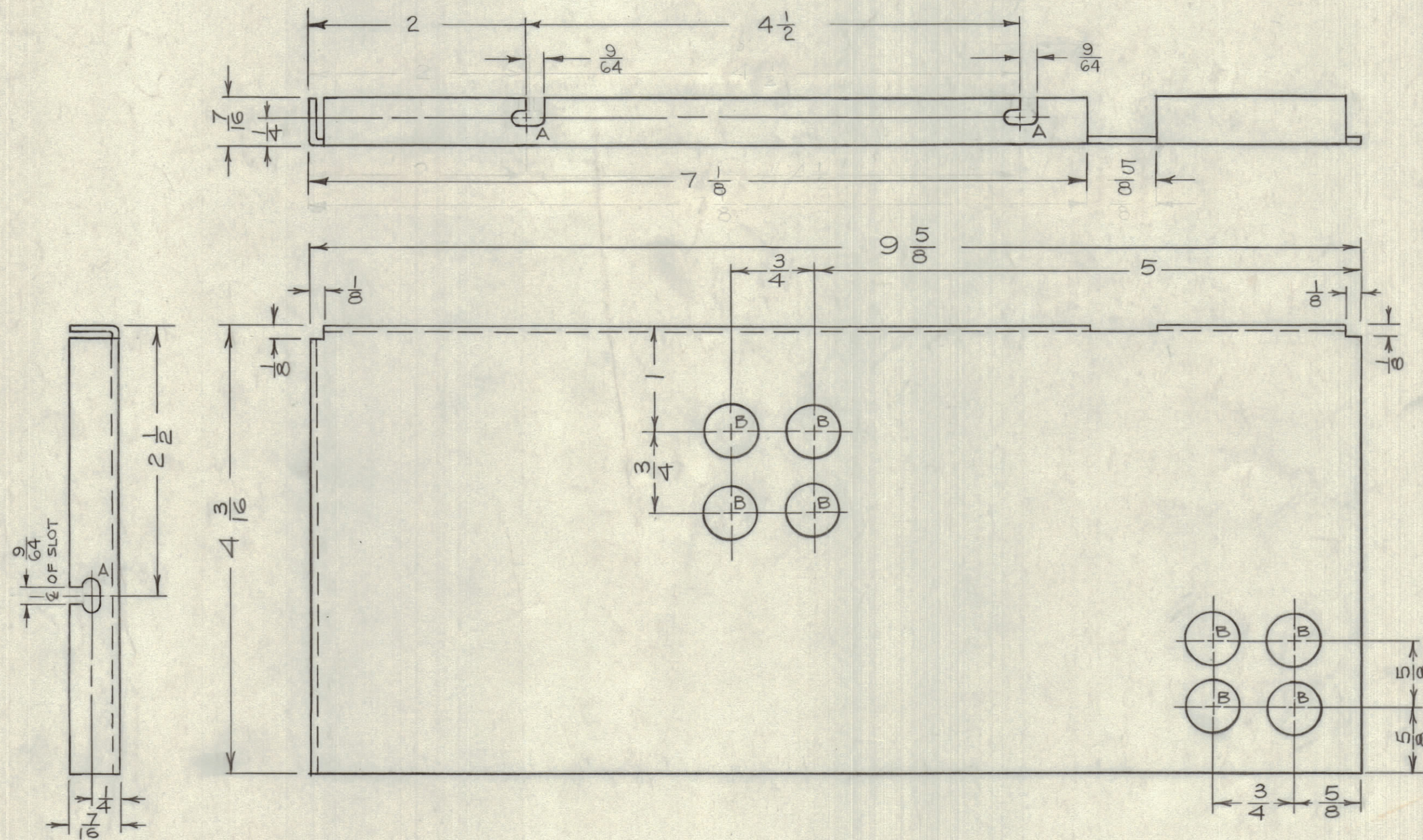


IF IT IS FOUND DESIRABLE TO CHANGE ANY TOLERANCE OR OTHER DETAIL SPECIFIED ON THIS DRAWING NOTIFY THE PURCHASER PROMPTLY.

MAXIMUM ALLOWABLE TOLERANCES HAVE BEEN DETERMINED AND DEVIATIONS WILL BE CAUSE FOR REJECTION. REMOVE ALL BURRS AND SHARP EDGES



A -  $\frac{9}{32} \times \frac{9}{64}$  SLOT.  
B -  $\frac{1}{2}$  (.500) DIA.

MS10426 B

ISSUE	ITEM	CHANGED FROM	DATE	CN. NO.	DRAFTS	CHECKER	ENG. APP.
B	1	ADDED $\frac{9}{64}$ SLOT TO "A" SLOTS	3/15/68	B515	JPC	<i>[Signature]</i>	<i>[Signature]</i>
A		MS10426AWAS MS1269	8/11/60		JPC	<i>[Signature]</i>	<i>[Signature]</i>

TOLERANCES: SCALE: 1:1

ALL OTHERS: DEC. DIM. ±  
FRAC. DIM. ±  
ANGULAR DIM. ±

DRILL, PUNCH, COMMERCIAL STOCK SIZES AND MANUFACTURERS TOLERANCES ARE NOT INCLUDED.

RFA-1				8/11/60			
MODEL	PROJECT NO.	ASS'Y. NO.	DATE	MODEL	PROJECT NO.	ASS'Y. NO.	DATE
USED ON							

REQ.	ITEM	PART NO.	DESCRIPTION	SYMBOL
		.051 TK.	TMC (Canada) LIMITED	
		STOCK SIZE	OTTAWA ONTARIO	
		ALUM.	COVER, DRIVER	
		MATERIAL	CHASSIS - RFA-1.	
		5052 H 32	JPC	
		WEIGHT PER PC.	DRAWN	
		TYPE & TEMPER	ELEC. DES. APP.	
			MECH. DES. APP.	
			CHECKED	
		HEAT TREAT. SPEC.	FINAL APPROVAL	
		S101 CAUSTIC DIP		
		S404 LACQUER		
		FINISH & SPEC. NO.		

MS10426 B