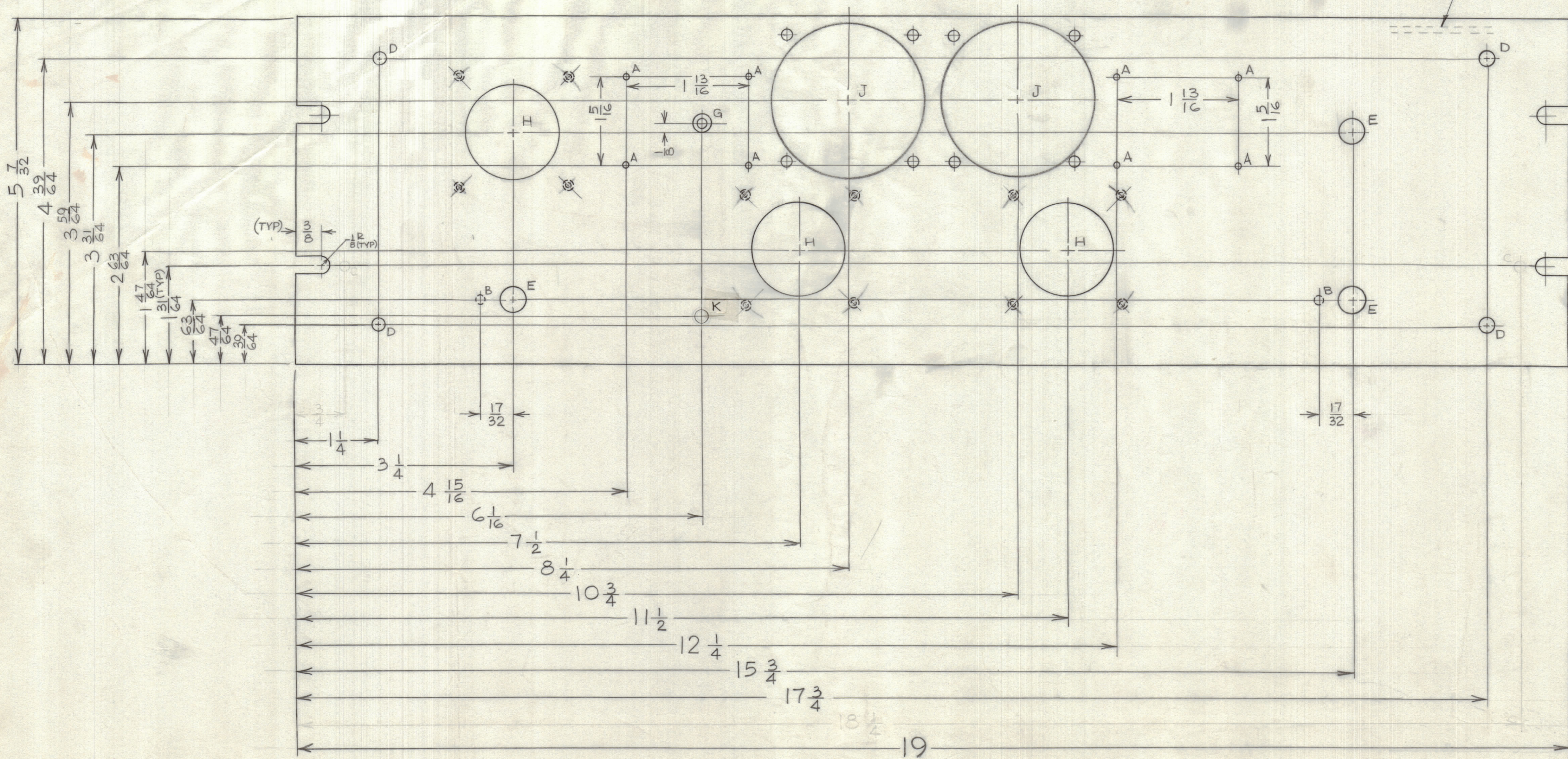


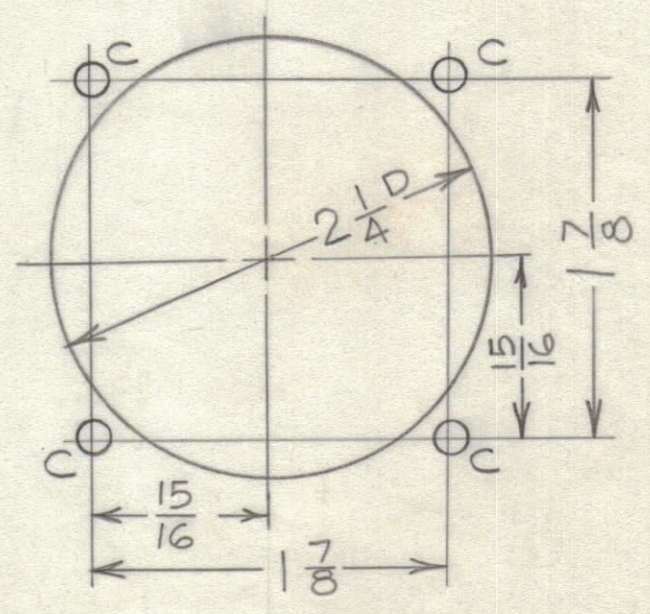
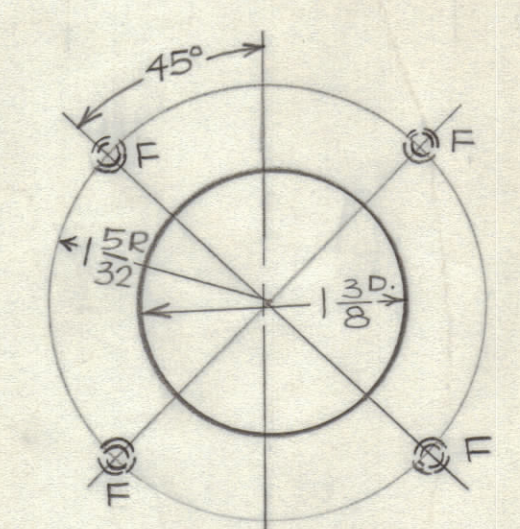
IF IT IS FOUND DESIRABLE TO CHANGE ANY TOLERANCE OR OTHER DETAIL SPECIFIED ON THIS DRAWING NOTIFY THE PURCHASER PROMPTLY.		DIMENSIONS IN INCHES UNLESS OTHERWISE SPECIFIED					
MAXIMUM ALLOWABLE TOLERANCES HAVE BEEN DETERMINED AND DEVIATIONS WILL BE CAUSE FOR REJECTION. REMOVE ALL BURRS AND SHARP EDGES.							
ISSUE	ITEM	CHANGED FROM	DATE	CK. NO.	DRAFTS	CHECKER	ENG. APP.
D	Redrawn & Revised		25/12/62		JPC		
E	CSK PICT & CHART, 2 HOLES & 1/8" HOLE DELETED. 1/4" HOLE ADDED.		10/12/62				

REG	ITEM	PART NO.	DESCRIPTION	SYMBOL
LEGEND				
HOLE	DIMENSIONS		REQ	
A	.0785 DIA.		8	
B	.1406 DIA. X 1/8" Deep From Rear		2	
C	.1562 DIA.		8	
D	.2031 DIA.		4	
E	.3906 DIA.		3	
F	6-32 Drill # Tap 1/8" Deep From Rear		12	
G	.169 DIA - CSK 82° X .337 DIA		1	
H	SEE DETAIL		3	
J	SEE DETAIL		2	
K	.187 DIA		1	

METAL STAMP TMC PART NO. MS-10396-E
1/8" HIGH GOTHIC
ON REAR OF PANEL



HOLE	TYPE	X	Y	REQ
G	G-SINK FOR 8-32-169	.337	1	1



- NOTES**
- FINISH - S404-YELLOW IRIDITE
 - S114 - ZINC CHROMATE PRIMER
 - S115 - TMC SMOOTH GREY ENAMEL
 - OR PRIME & PAINT TO CUSTOMER SPEC.
- MACHINING-**
- 1 - LATERAL BOW OF PANEL MUST BE KEPT TO .031 TOL.
 - 2 - MILL ALL EDGES.
 - 3 - PANEL MUST BE FREE OF ALL MACHINING MARKS, GOUGES & SCRATCHES. IF NECESSARY SAND FRONT OF PANEL WITH NO. 120 GRIT SANDPAPER.

NOTICE TO PERSONS RECEIVING THIS DRAWING

THE TECHNICAL MATERIEL CORPORATION claims proprietary right in the material disclosed hereon. This drawing is issued in confidence for engineering information only and may not be reproduced or used to manufacture anything shown hereon without permission from THE TECHNICAL MATERIEL CORPORATION to the user. This drawing is loaned for mutual assistance and is subject to recall at any time.

Property of:
THE TECHNICAL MATERIEL CORPORATION
MAMARONECK, NEW YORK

REF: LD-10089

3/16" THICK		TMC (Canada) LIMITED OTTAWA ONTARIO	
ALUMINUM	FRONT PANEL		
24 ST3	JPC		
TYPE & TEMPER	DRAWN	ELEC. DES. APP.	MECH. DES. APP.
HEAT TREAT. SPEC.	CHECKED	FINAL APPROVAL	
SEE NOTE		MS-10396 E	

RFA-1	PAL-350	DEC. 19, 1962
MODEL	PROJECT NO.	DATE

TOLERANCES		SCALE: DO NOT SCALE
ALL	DEC. DIM ± .005	DRILL, PUNCH, COMMERCIAL STOCK
OTHERS	FRACTIONAL DIM ± 1/64	SIZES AND MANUFACTURERS
	ANGULAR DIM ± 1/2°	TOLERANCES ARE NOT INCLUDED.