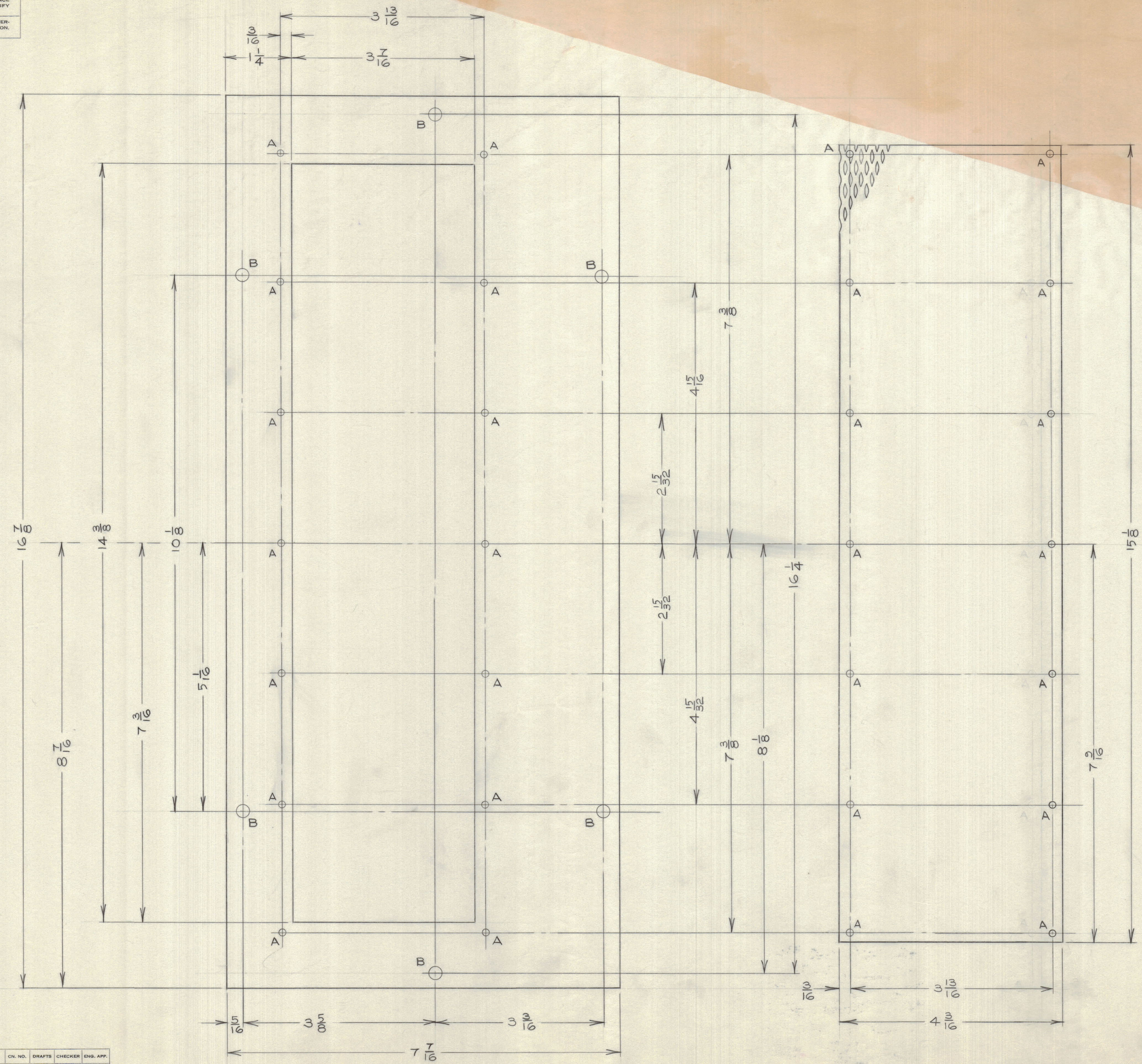


IF IT IS FOUND DESIRABLE TO CHANGE ANY TOLERANCE OR OTHER DETAIL SPECIFIED ON THIS DRAWING NOTIFY THE PURCHASER PROMPTLY.
 MAXIMUM ALLOWABLE TOLERANCES HAVE BEEN DETERMINED AND DEVIATIONS WILL BE CAUSE FOR REJECTION. REMOVE ALL BURRS AND SHARP EDGES

NOTICE TO PERSONS RECEIVING THIS DRAWING
 THE TECHNICAL MATERIEL CORPORATION claims proprietary right in the material disclosed herein. This drawing is issued in confidence for engineering information only and may not be reproduced or used to manufacture anything shown herein without permission from THE TECHNICAL MATERIEL CORPORATION to the user. This drawing is loaned for mutual assistance and is subject to recall at any time.
 Property of:
 THE TECHNICAL MATERIEL CORPORATION
 MAMARONECK, NEW YORK



HOLE A - 1/8 DIA.
 HOLE B - 1/4 DIA.

- NOTES:**
- ITEM 1 FROM 14 GA ALUMINUM SHEET
 ITEM 2 FROM EXPANDED ALUMINUM SHEET .031 THK
 - ITEMS 1 & 2 ETCH & IRIDITE
 - ATTACH ITEM 2 TO ITEM 1 WITH ITEMS 3, 4, & 5

REQ. ITEM	PART No.	DESCRIPTION	SYMBOL
14	5	LWS04MRN WASHER	
14	4	NTH0440BNG NUT	
14	3	SCBS0440BN4 SCREW	
1	2	SCREEN	
1	1	BOTTOM COVER	
SEE NOTE 1		TMC (Canada) LIMITED OTTAWA ONTARIO	
SEE NOTE 1		DUST COVER TST-2	
MATERIAL		WEIGHT PER PC.	
TYPE & TEMPER		DCM	
DRAWN		ELEC. DES. APP.	
HEAT TREAT. SPEC.		MECH. DES. APP.	
CHECKED		FINAL APPROVAL	
SEE NOTE 2		MS10387	
FINISH & SPEC. No.			

ISSUE	ITEM	CHANGED FROM	DATE	EN. NO.	DRAFTS	CHECKER	ENG. APP.
TOLERANCES							
ALL OTHERS				DEC. DIM. ± 1/64			
FRAC. DIM. ± 1/64				ANGULAR DIM. ±			
SCALE: 1:1							
DRILL, PUNCH, COMMERCIAL STOCK SIZES AND MANUFACTURERS TOLERANCES ARE NOT INCLUDED.							

TST-2
 DEC 18/59
 MODEL PROJECT No. ASS'Y. No. DATE
 USED ON

MS10387