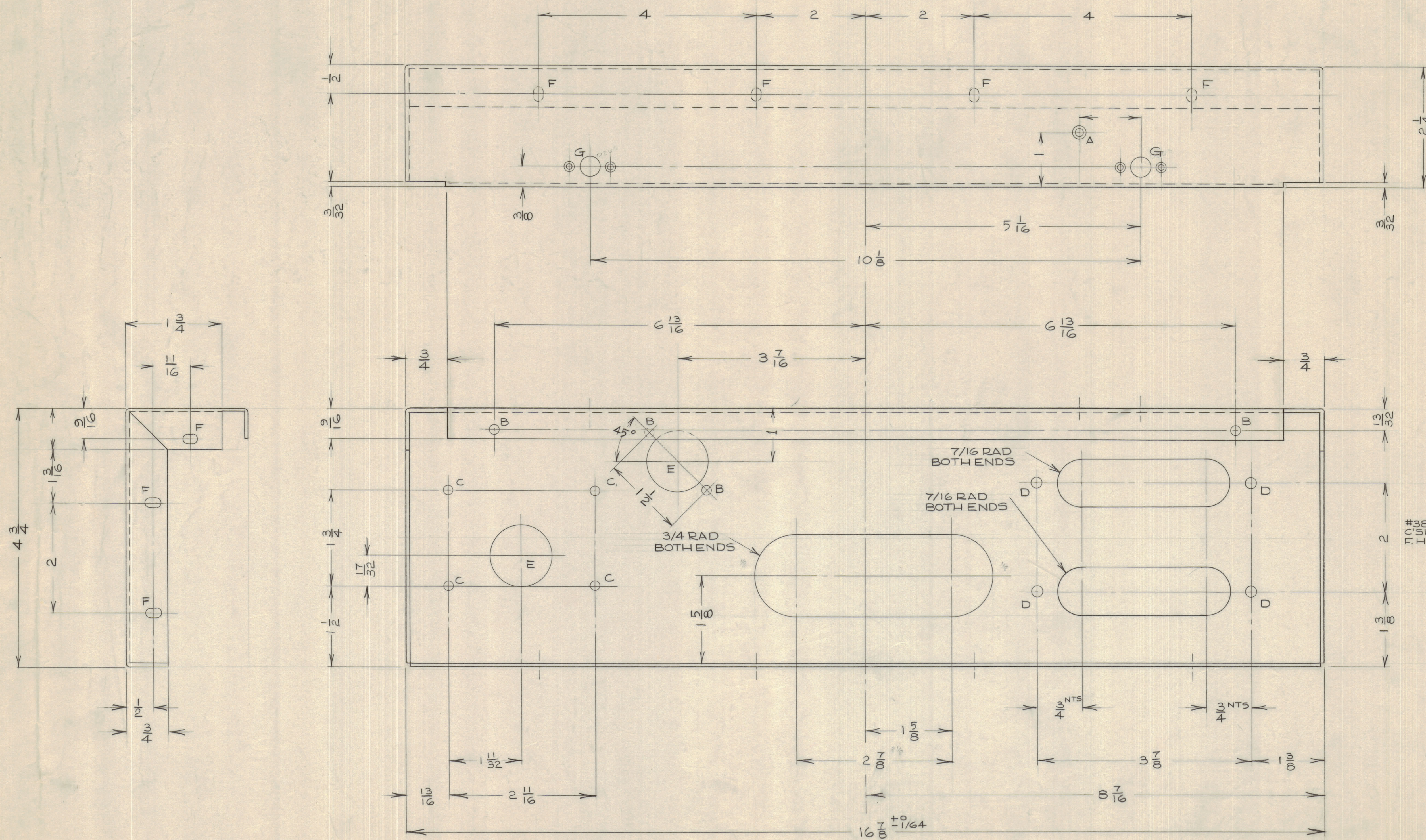


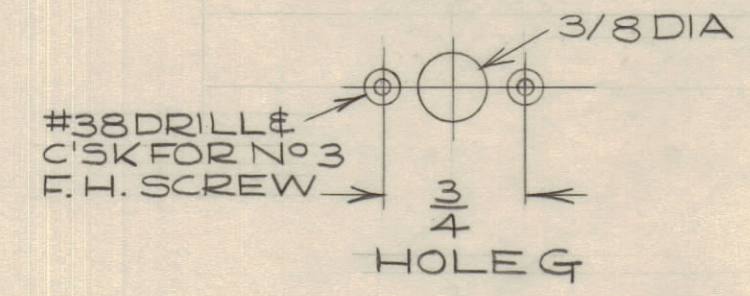
IF IT IS FOUND DESIRABLE TO CHANGE ANY TOLERANCE OR OTHER DETAIL SPECIFIED ON THIS DRAWING NOTIFY THE PURCHASER PROMPTLY.

MAXIMUM ALLOWABLE TOLERANCES HAVE BEEN DETERMINED AND DEVIATIONS WILL BE CAUSE FOR REJECTION. REMOVE ALL BURRS AND SHARP EDGES.

MS10386



HOLE A - 9/64 DIA # C'SK FOR #6 F.H. SCREW
HOLE B - 11/64 DIA
HOLE C - 13/64 DIA
HOLE D - 7/32 DIA
HOLE E - 1-1/8 DIA
HOLE F - 11/64 X 11/32 SLOT (10 REQ'D)



ISSUE	ITEM	CHANGED FROM	DATE	CN. NO.	DRAFTS	CHECKER	ENG. APP.
TOLERANCES							
ALL	DEC. DIM. ±	1/64	DRILL, PUNCH, COMMERCIAL STOCK				
OTHERS	FRAC. DIM. ±	1/64	SIZES AND MANUFACTURERS				
	ANGULAR DIM. ±	0° 15'	TOLERANCES ARE NOT INCLUDED.				

TST-2
PROJECT NO. _____ ASS'Y. No. _____ DATE DEC 17/59
USED ON _____

REQ. ITEM	PART NO.	DESCRIPTION	SYMBOL
14 GA SH.		TMC (Canada) LIMITED	
STOCK SIZE		OTTAWA ONTARIO	
ALUMINUM		BARRIER	
MATERIAL	WEIGHT PER PC.	TST-2	
TYPE & TEMPER	DCM		
HEAT TREAT. SPEC.			
ETCH & IRIDITE			
FINISH & SPEC. NO.			