

IF IT IS FOUND DESIRABLE TO CHANGE ANY TOLERANCE OR OTHER DETAIL SPECIFIED ON THIS DRAWING NOTIFY THE PURCHASER PROMPTLY.

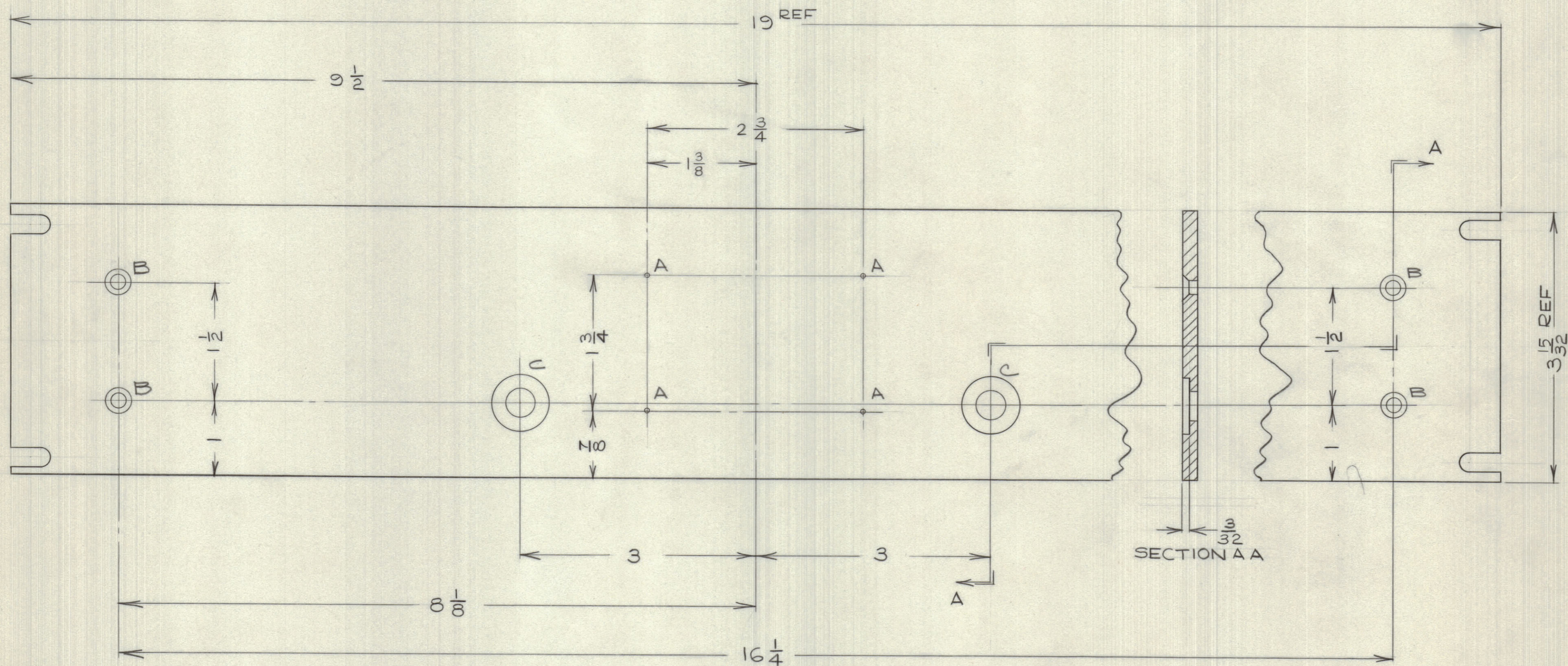
MAXIMUM ALLOWABLE TOLERANCES HAVE BEEN DETERMINED AND DEVIATIONS WILL BE CAUSE FOR REJECTION. REMOVE ALL BURRS AND SHARP EDGES

NOTICE TO PERSONS RECEIVING THIS DRAWING

THE TECHNICAL MATERIEL CORPORATION claims proprietary right in the material disclosed herein. This drawing is issued in confidence for engineering information only and may not be reproduced or used to manufacture anything shown herein without permission from THE TECHNICAL MATERIEL CORPORATION to the user. This drawing is loaned for mutual assistance and is subject to recall at any time.

Property of:

THE TECHNICAL MATERIEL CORPORATION  
MAMARONECK, NEW YORK



HOLE A - No 47 DRILL (.0785 DIA)  
 HOLE B - No 19 DRILL (.166 DIA) & C'SK FOR #8 F.H. SCREW  
 HOLE C - 3/8 DIA DRILL THRU, C'BORE 23/32 X 3/32 DEEP FROM FRONT.

ISSUE	ITEM	CHANGED FROM	DATE	CN. NO.	DRAFTS	CHECKER	ENG. APP.
TOLERANCES		SCALE: 1:1					
ALL OTHERS	DEC. DIM. ± 1/64	DRILL, PUNCH, COMMERCIAL STOCK SIZES AND MANUFACTURERS TOLERANCES ARE NOT INCLUDED.					

TTF-2  
 MODEL PROJECT No. ASS'Y. No. DATE NOV 5/59  
 USED ON

REQ. ITEM	PART No.	DESCRIPTION	SYMBOL
MS-157-25	STOCK SIZE	TMC (Canada) LIMITED OTTAWA ONTARIO	
ALUMINUM	WEIGHT PER PC.	FRONT PANEL	
		TTF-2	
	TYPE & TEMPER	DCM	
	HEAT TREAT. SPEC.	DRAWN ELEC. DES. APP. MECH. DES. APP.	
	FINISH & SPEC. No.	CHECKED FINAL APPROVAL	

MS10375