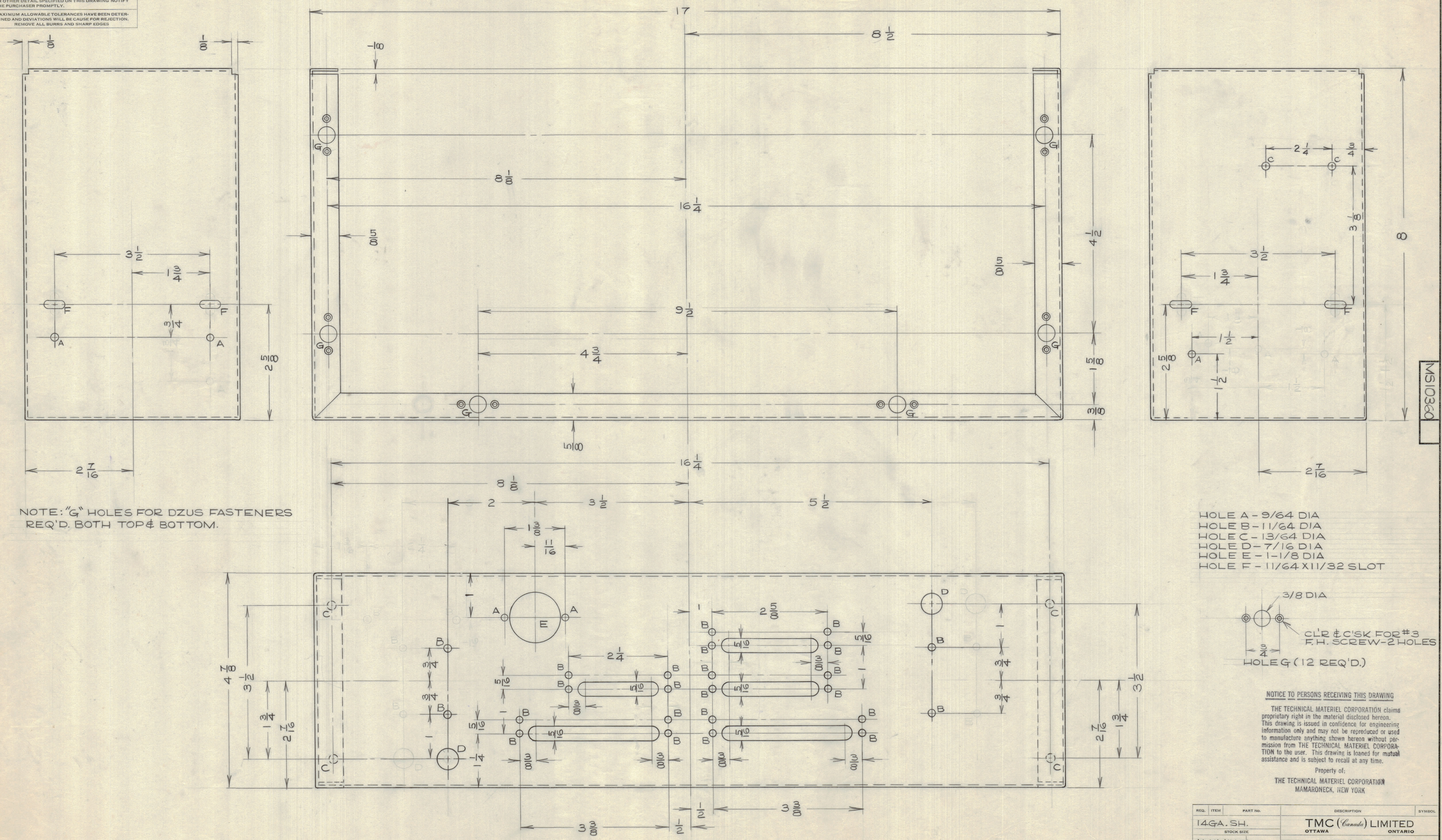
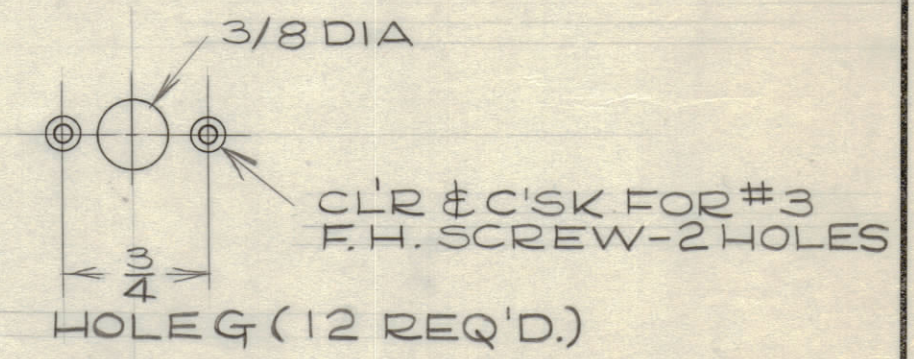


IF IT IS FOUND DESIRABLE TO CHANGE ANY TOLERANCE OR OTHER DETAIL SPECIFIED ON THIS DRAWING NOTIFY THE PURCHASER PROMPTLY.
 MAXIMUM ALLOWABLE TOLERANCES HAVE BEEN DETERMINED AND DEVIATIONS WILL BE CAUSE FOR REJECTION. REMOVE ALL BURRS AND SHARP EDGES.



NOTE: "G" HOLES FOR DZUS FASTENERS REQ'D. BOTH TOP & BOTTOM.

HOLE A - 9/64 DIA
 HOLE B - 11/64 DIA
 HOLE C - 13/64 DIA
 HOLE D - 7/16 DIA
 HOLE E - 1-1/8 DIA
 HOLE F - 11/64 X 11/32 SLOT



NOTICE TO PERSONS RECEIVING THIS DRAWING
 THE TECHNICAL MATERIEL CORPORATION claims proprietary right in the material disclosed hereon. This drawing is issued in confidence for engineering information only and may not be reproduced or used to manufacture anything shown hereon without permission from THE TECHNICAL MATERIEL CORPORATION to the user. This drawing is loaned for mutual assistance and is subject to recall at any time.
 Property of:
 THE TECHNICAL MATERIEL CORPORATION
 MAMARONECK, NEW YORK

ISSUE	ITEM	CHANGED FROM	DATE	CH. NO.	DRAFTS	CHECKER	ENG. APP.
TOLERANCES							SCALE: FULL
ALL OTHERS	DEC. DIM. ±	1/64	DRILL, PUNCH, COMMERCIAL STOCK SIZES AND MANUFACTURERS TOLERANCES ARE NOT INCLUDED.				

CTCU-1 CE5004-A SEPT 9/59
 MODEL PROJECT NO. ASS'Y. NO. DATE

REQ. ITEM	PART NO.	DESCRIPTION	SYMBOL
14GA. SH.		TMC (Canada) LIMITED	
STOCK SIZE		OTTAWA ONTARIO	
ALUMINUM		CHASSIS	
MATERIAL	WEIGHT PER PC.	TRANSMITTER CONTROL	
TYPE & TEMPER		DCM	R. W. Thomas
		DRAWN	ELEC. DES. APP.
			MECH. DES. APP.
HEAT TREAT. SPEC.			
		CHECKED	FIN. APPROVAL
ETCH & IRIDITE			
FINISH & SPEC. NO.			MS10360