

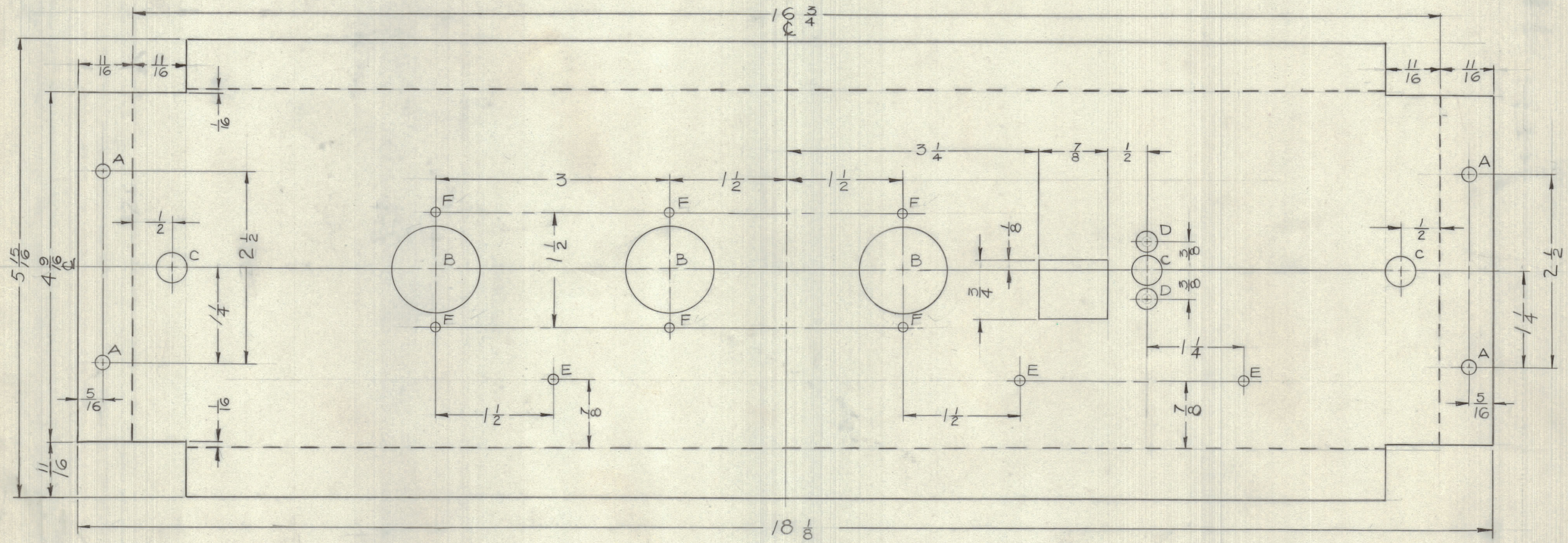
IF IT IS FOUND DESIRABLE TO CHANGE ANY TOLERANCE OR OTHER DETAIL SPECIFIED ON THIS DRAWING NOTIFY THE PURCHASER PROMPTLY.

MAXIMUM ALLOWABLE TOLERANCES HAVE BEEN DETERMINED AND DEVIATIONS WILL BE CAUSE FOR REJECTION. REMOVE ALL BURRS AND SHARP EDGES

NOTICE TO PERSONS RECEIVING THIS DRAWING

THE TECHNICAL MATERIEL CORPORATION claims proprietary right in the material disclosed hereon. This drawing is issued in confidence for engineering information only and may not be reproduced or used to manufacture anything shown hereon without permission from THE TECHNICAL MATERIEL CORPORATION to the user. This drawing is loaned for mutual assistance and is subject to recall at any time.

Property of:
THE TECHNICAL MATERIEL CORPORATION
MAMARONECK, NEW YORK



NOTE: BEND DOWN ON DOTTED LINES.

HOLE A = 3/16 DIA.
HOLE B = 1-1/8 DIA.
HOLE C = 3/8 DIA.
HOLE D = 1/4 DIA.
HOLE E = 1/8 DIA.
HOLE F = 9/16 DIA.

MS10349

ISSUE	ITEM	CHANGED FROM	DATE	CN. NO.	DRAFTS	CHECKER	ENG. APP.
TOLERANCES							
ALL OTHERS			DEC. DIM. ± 1/64		FRAC. DIM. ± 1/64		
SCALE: 1:1			DRILL, PUNCH, COMMERCIAL STOCK SIZES AND MANUFACTURERS TOLERANCES ARE NOT INCLUDED.				

P-5002		AUG. 18/59	
MODEL	PROJECT No.	ASS'Y. No.	DATE
USED ON			

REQ.	ITEM	PART No.	DESCRIPTION	SYMBOL
		14 GA.	TMC (Canada) LIMITED	
		STOCK SIZE	OTTAWA ONTARIO	
		ALUM.	BARRIER CTRP-2	
		MATERIAL	WEIGHT PER PC.	
		TYPE & TEMPER	JPC	
		HEAT TREAT. SPEC.	DRM	
		FINISH & SPEC. No.	ETCH & IRIDITE	
			MS10349	