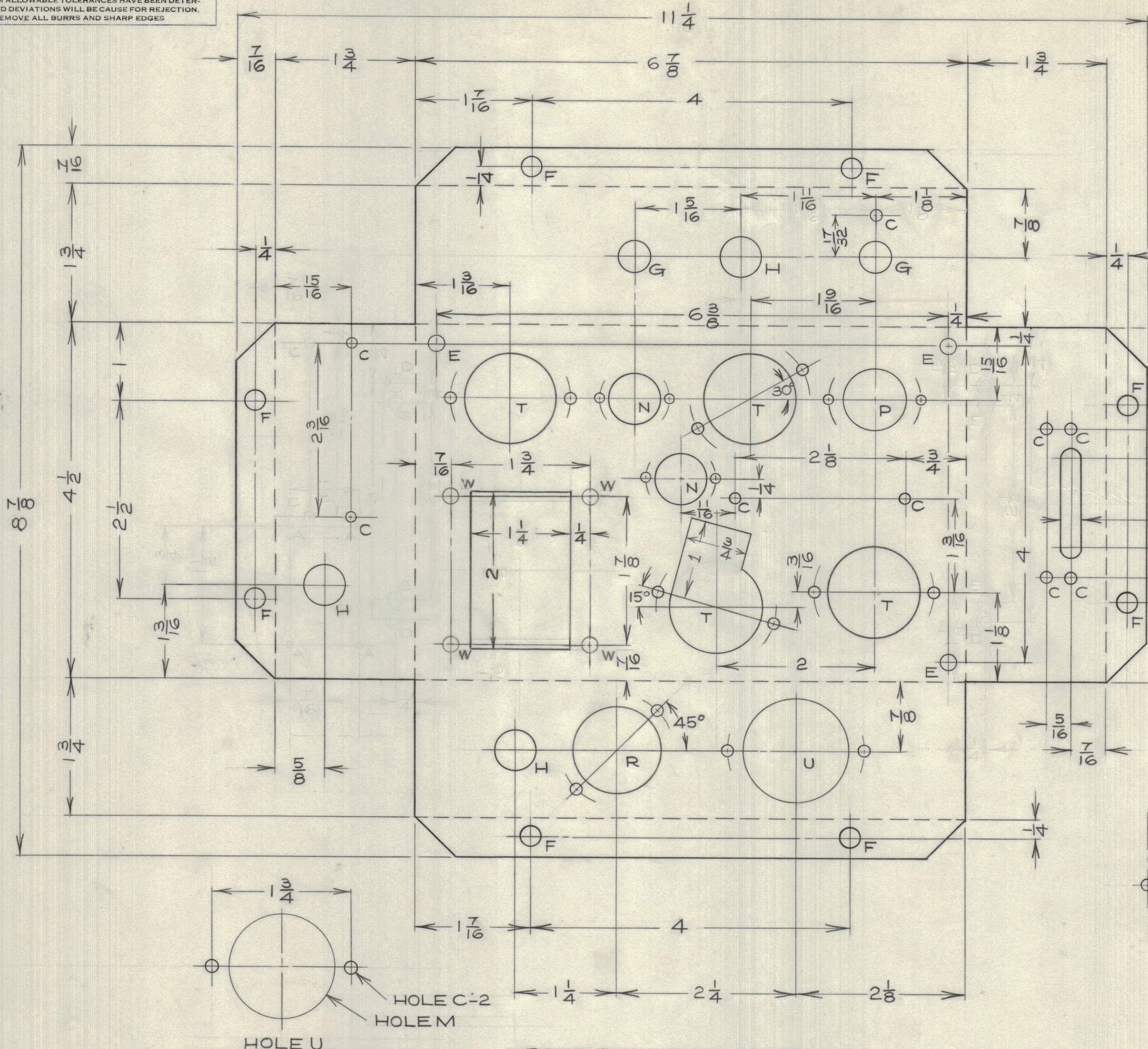
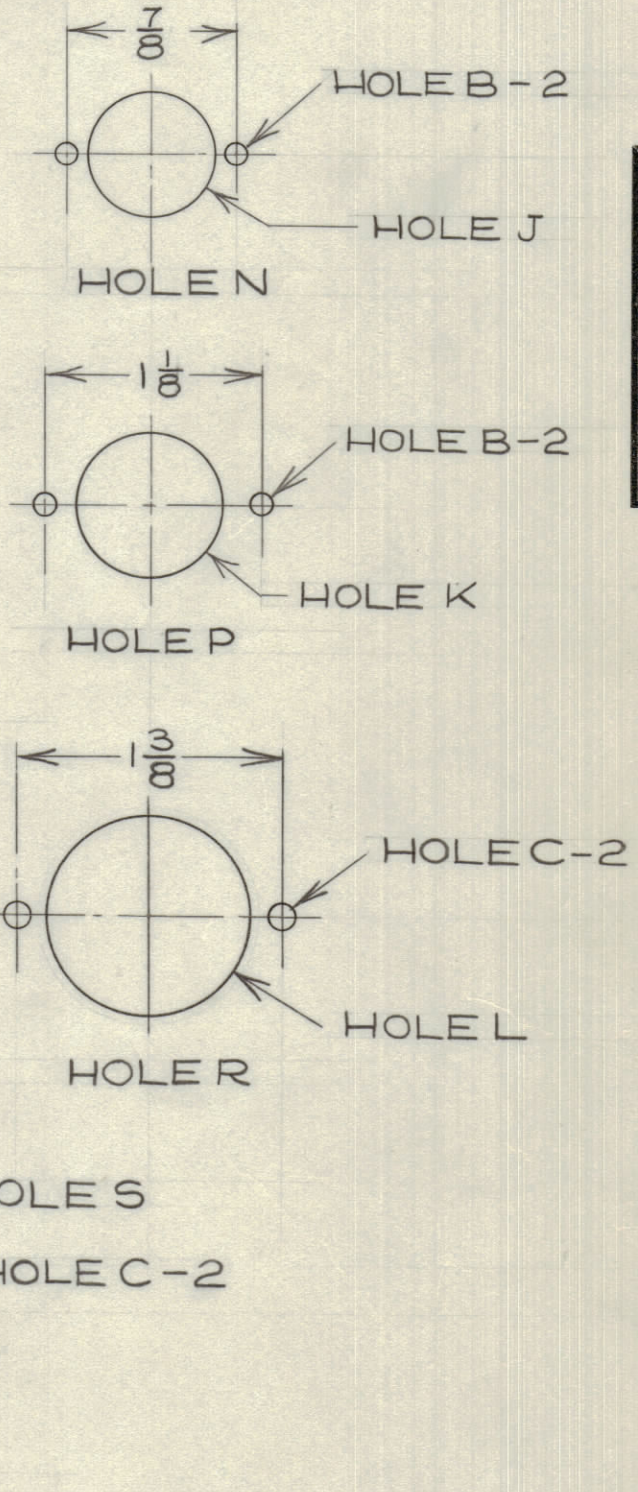


IF IT IS FOUND DESIRABLE TO CHANGE ANY TOLERANCE OR OTHER DETAIL SPECIFIED ON THIS DRAWING NOTIFY THE PURCHASER PROMPTLY.

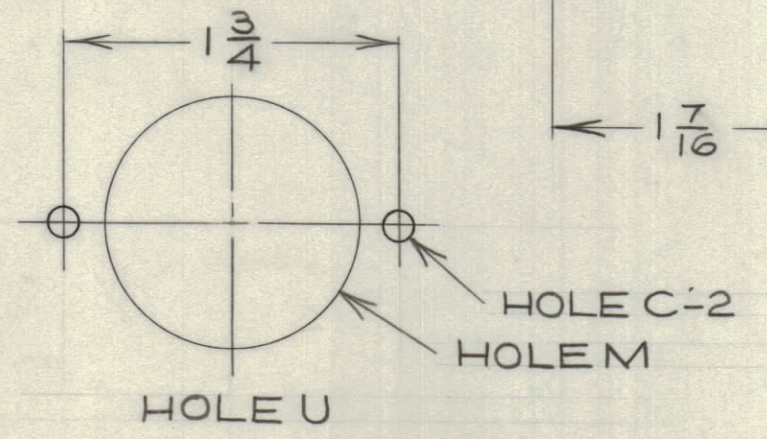
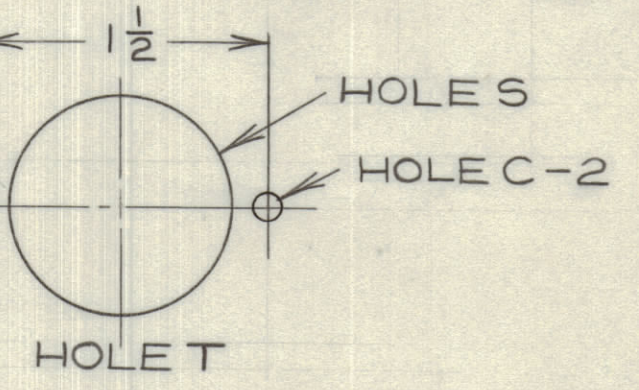
MAXIMUM ALLOWABLE TOLERANCES HAVE BEEN DETERMINED AND DEVIATIONS WILL BE CAUSE FOR REJECTION. REMOVE ALL BURRS AND SHARP EDGES



- HOLE A - #49 DRILL (NOT USED)
- HOLE B - 1/8 DIA
- HOLE C - 9/64 DIA
- HOLE D - 9/64 DIA - C'SK FOR #6 F.H. SCREW (NOT USED)
- HOLE E - 11/64 DIA
- HOLE F - 1/4 DIA
- HOLE G - 3/8 DIA
- HOLE H - 1/2 DIA
- HOLE J - 5/8 DIA
- HOLE K - 3/4 DIA
- HOLE L - 1-1/16 DIA
- HOLE M - 1-5/16 DIA
- HOLE S - 1-1/8 DIA
- HOLE W 3/16 DIA



MS10330 A



BEND DOWN ON ALL BENDLINES

NOTE: FINISH - SIDES SMOOTH GREY ENAMEL
INTERNATIONAL N2 1-110

A	-HOLE W WAS 1/164	JULY 31/59	JPC		
	-TRANSFORMER CUTOUT WAS 1-1/4 X 1-3/4				
ISSUE	ITEM	CHANGED FROM	DATE	CN. NO.	DRAFTS
					CHECKER
					ENG. APP.
TOLERANCES			SCALE: 1:1		
ALL OTHERS			DRILL, PUNCH, COMMERCIAL STOCK SIZES AND MANUFACTURERS TOLERANCES ARE NOT INCLUDED.		

MODEL	PROJECT No.	ASS'Y. No.	DATE
SCU-2			JUNE 9/59

REQ. ITEM	PART No.	DESCRIPTION	SYMBOL
14 GA (.064) TK		TMC (Canada) LIMITED	
ALUM		OTTAWA ONTARIO	
055-T		CHASSIS	
DCM			
DRAWN		ELEC. DES. APP.	MECH. DES. APP.
CHECKED		FINAL APPROVAL	
		MS10330 A	