

IF IT IS FOUND DESIRABLE TO CHANGE ANY TOLERANCE OR OTHER DETAIL SPECIFIED ON THIS DRAWING NOTIFY THE PURCHASER PROMPTLY.

MS10325

MAXIMUM ALLOWABLE TOLERANCES HAVE BEEN DETERMINED AND DEVIATIONS WILL BE CAUSE FOR REJECTION. REMOVE ALL BURRS AND SHARP EDGES

USED ON

MODEL

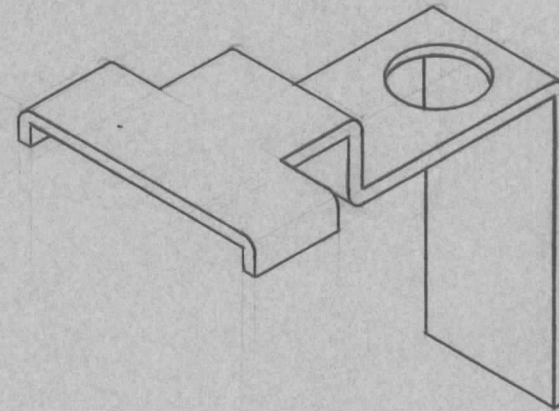
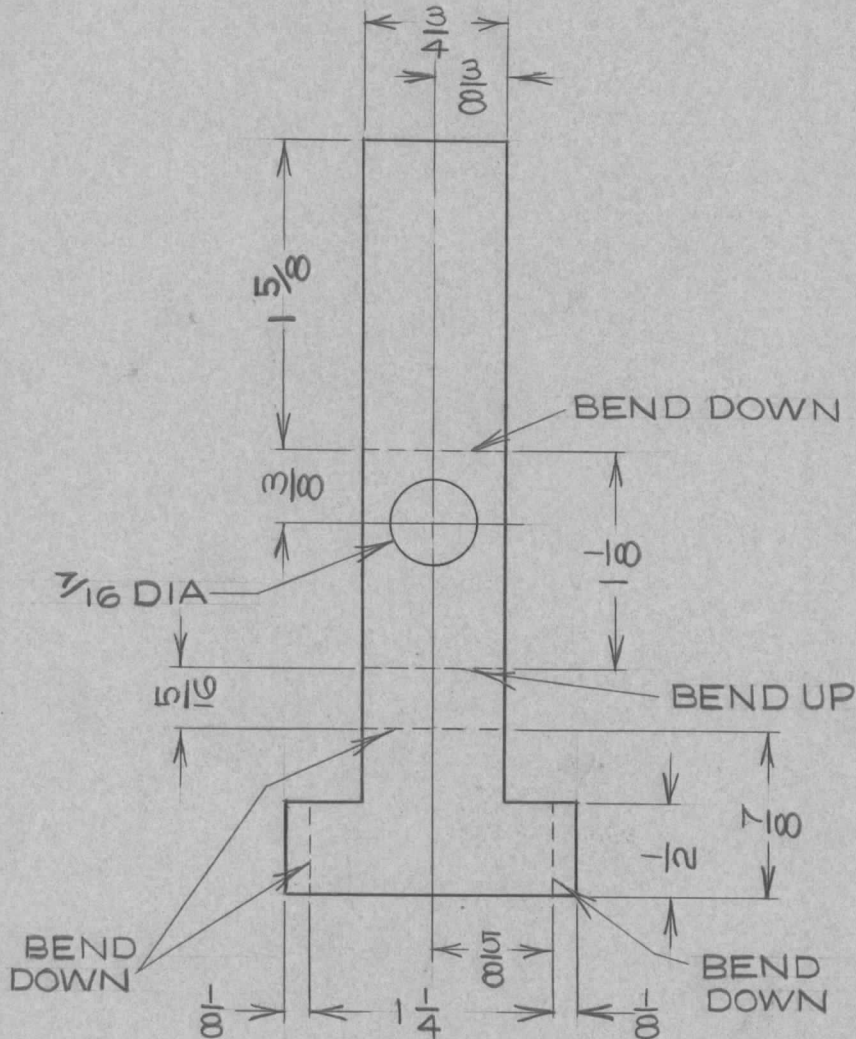
PROJECT NO.

ASS'Y. NO.

DATE

GPT-750

APR 29
1959



| REQ. | ITEM | PART NO. | DESCRIPTION | SYMBOL |
|------|--------------------|----------------|----------------------|---------------------------------|
| | 14GA | | TMC (Canada) LIMITED | |
| | STOCK SIZE | | OTTAWA | ONTARIO |
| | ALUM | | BRACKET, RELAY | |
| | MATERIAL | WEIGHT PER PC. | | |
| | TYPE & TEMPER | | DCM | |
| | | | DRAWN | ELEC. DES. APP. MECH. DES. APP. |
| | HEAT TREAT. SPEC. | | CHECKED | FINAL APPROVAL |
| | ETCH & IRIDITE | | | MS10325 |
| | FINISH & SPEC. NO. | | | |

ISSUE ITEM CHANGED FROM DATE CN. NO. DRAFTS CHECKER ENG. APP.

TOLERANCES

SCALE 1 : 1

ALL OTHERS DEC. DIM. \pm
FRAC. DIM. \pm
ANGULAR DIM. \pm

DRILL, PUNCH, COMMERCIAL STOCK SIZES AND MANUFACTURERS TOLERANCES ARE NOT INCLUDED.