

IF IT IS FOUND DESIRABLE TO CHANGE ANY TOLERANCE OR OTHER DETAIL SPECIFIED ON THIS DRAWING NOTIFY THE PURCHASER PROMPTLY.

MS10323

MAXIMUM ALLOWABLE TOLERANCES HAVE BEEN DETERMINED AND DEVIATIONS WILL BE CAUSE FOR REJECTION. REMOVE ALL BURRS AND SHARP EDGES

USED ON

MODEL

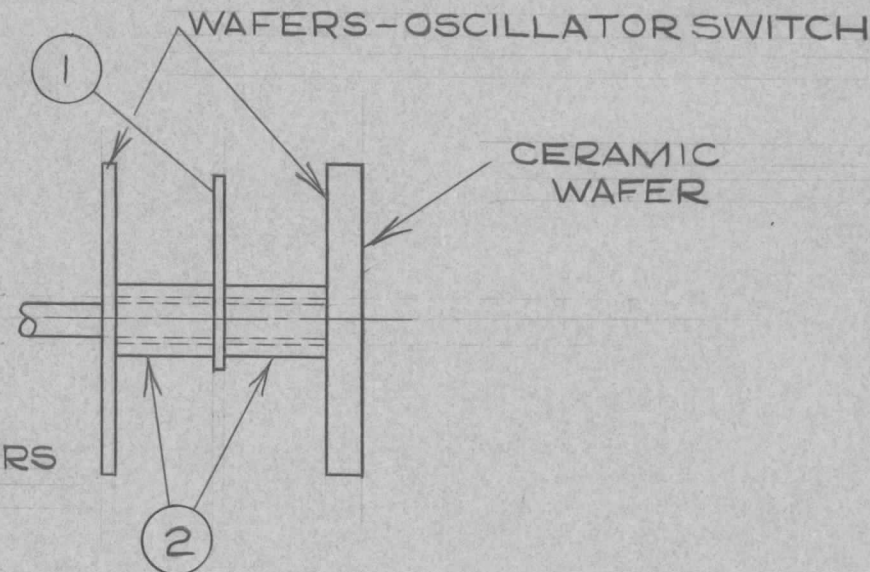
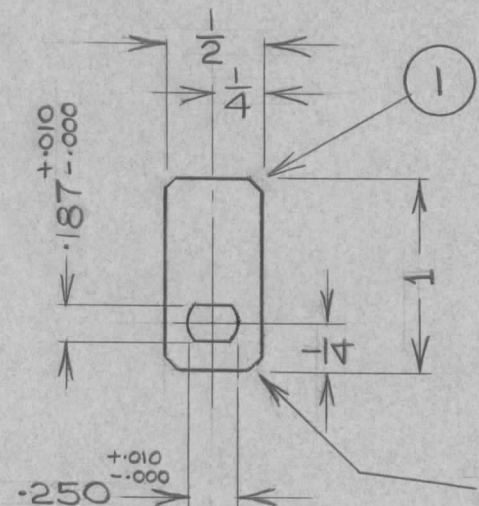
PROJECT NO.

ASS'Y. NO.

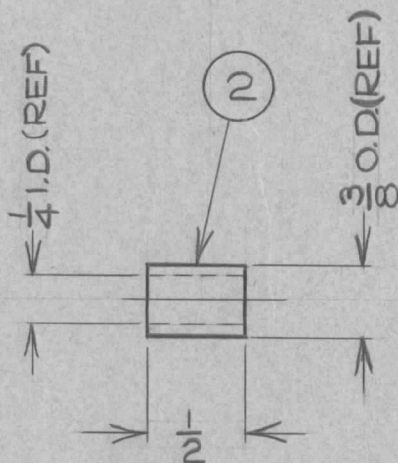
DATE

GPT 750 CE 667

APR 30/59



CHAMFER CORNERS
1/16 X 45°



2	2		SPACER	
1	1		STOP	
REQ.	ITEM	PART NO.	DESCRIPTION	SYMBOL
IT1-14 GA. IT2-3/8 O.D X 1/4 ID TUBING			TMC (Canada) LIMITED OTTAWA ONTARIO	
STOCK SIZE				
IT1-ALUM IT2-BAKELITE			OSCILLATOR SWITCH STOP	
MATERIAL			DETAILS	
WEIGHT PER PC.				
TYPE & TEMPER			DCM	<i>M. Kr.</i>
			DRAWN	ELEC. DES. APP. MECH. DES. APP.
HEAT TREAT. SPEC.			1 <i>mc</i>	
IT1-ETCH & IRIDITE IT2-NIL			CHECKED	FINAL APPROVAL
FINISH & SPEC. NO.			MS10323	

ISSUE ITEM CHANGED FROM DATE CN. NO. DRAFTS CHECKER ENG. APP.

TOLERANCES

SCALE 1:1

ALL OTHERS

DEC. DIM. ±
FRAC. DIM. ± 1/64
ANGULAR DIM. ±

DRILL, PUNCH, COMMERCIAL STOCK SIZES AND MANUFACTURERS TOLERANCES ARE NOT INCLUDED.