

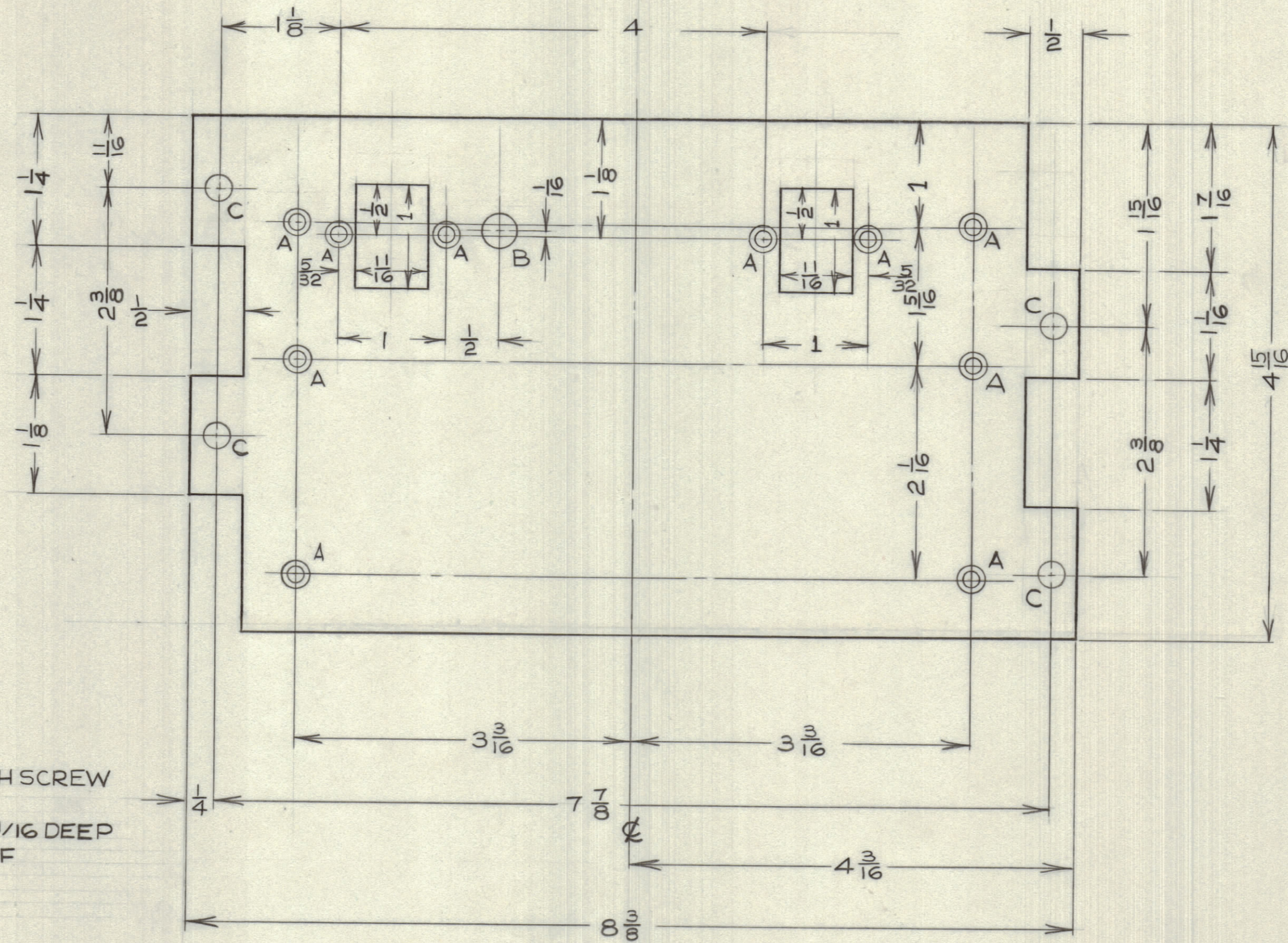
IF IT IS FOUND DESIRABLE TO CHANGE ANY TOLERANCE OR OTHER DETAIL SPECIFIED ON THIS DRAWING NOTIFY THE PURCHASER PROMPTLY.

MAXIMUM ALLOWABLE TOLERANCES HAVE BEEN DETERMINED AND DEVIATIONS WILL BE CAUSE FOR REJECTION. REMOVE ALL BURRS AND SHARP EDGES

NOTICE TO PERSONS RECEIVING THIS DRAWING

THE TECHNICAL MATERIEL CORPORATION claims proprietary right in the material disclosed hereon. This drawing is issued in confidence for engineering information only and may not be reproduced or used to manufacture anything shown hereon without permission from THE TECHNICAL MATERIEL CORPORATION to the user. This drawing is loaned for mutual assistance and is subject to recall at any time.

Property of:
THE TECHNICAL MATERIEL CORPORATION
MAMARONECK, NEW YORK



HOLE A - 9/64 DIA - C'SK FOR 6-32 FH SCREW
HOLE B - 5/16 DIA
HOLE C - 1/4 DIA (C'BORE 5/16 DIA X 1/16 DEEP FOR DZUS FASTENER IF NECESSARY)

MS10305

ISSUE	ITEM	CHANGED FROM	DATE	CN. NO.	DRAFTS	CHECKER	ENG. APP.
TOLERANCES		SCALE: 1:1					
ALL OTHERS	DEC. DIM. ± FRAC. DIM. ± 1/64 ANGULAR DIM. ±	DRILL, PUNCH, COMMERCIAL STOCK SIZES AND MANUFACTURERS TOLERANCES ARE NOT INCLUDED.					

TIS II A10250 MAR 16/59

MODEL	PROJECT No.	ASS'Y. No.	DATE
-------	-------------	------------	------

REQ.	ITEM	PART No.	DESCRIPTION	SYMBOL
	1/8 TK SH.		TMC (Canada) LIMITED	
	STOCK SIZE		OTTAWA ONTARIO	
	ALUMINUM		MTG PLATE	
	MATERIAL	WEIGHT PER PC.	TTU II	
	TYPE & TEMPER		DCM	
	HEAT TREAT. SPEC.		DRAWN	
	FINISH & SPEC. No.		CHECKED	
			FINAL APPROVAL	
				MS10305