

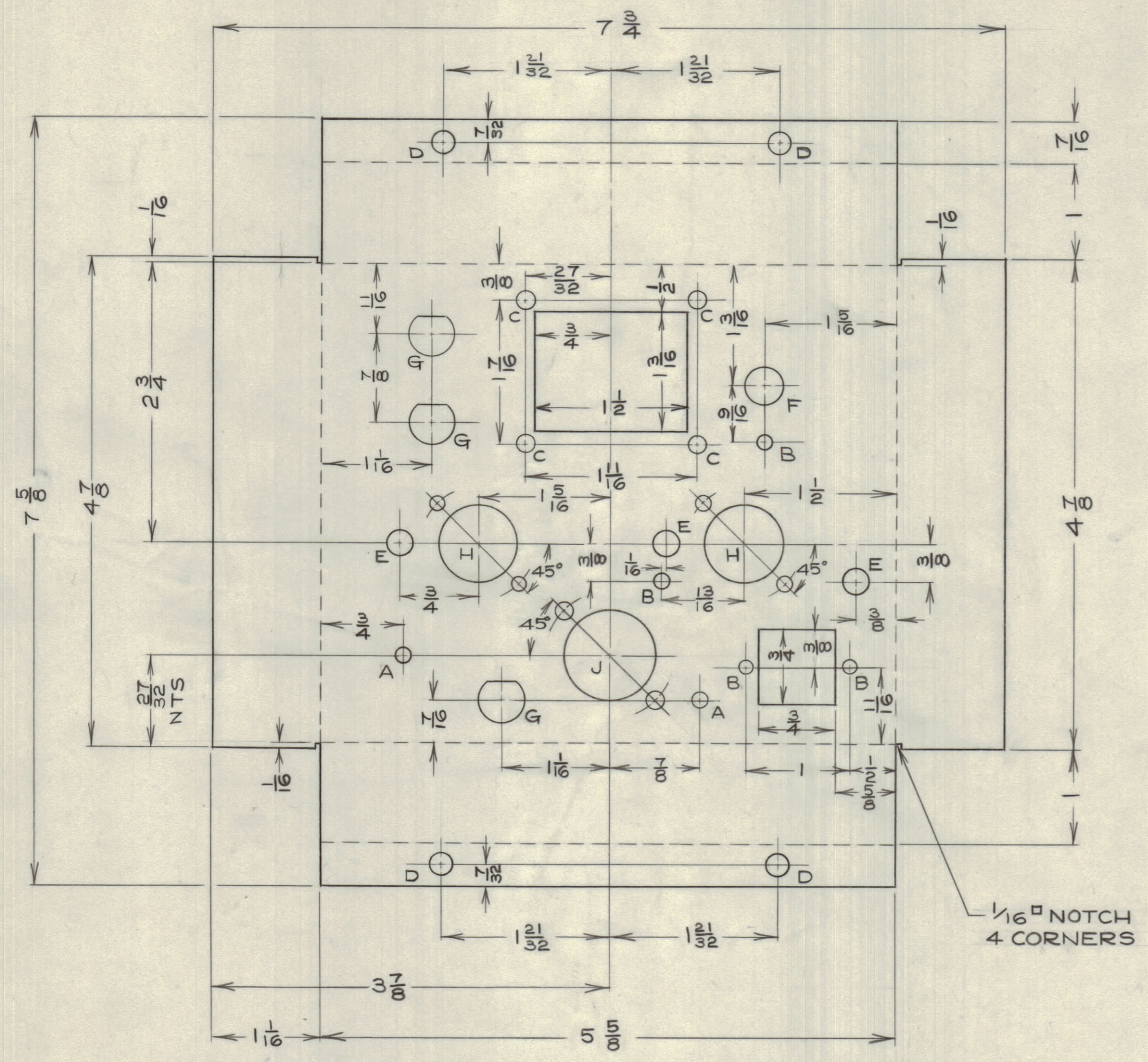
IF IT IS FOUND DESIRABLE TO CHANGE ANY TOLERANCE OR OTHER DETAIL SPECIFIED ON THIS DRAWING NOTIFY THE PURCHASER PROMPTLY.

MAXIMUM ALLOWABLE TOLERANCES HAVE BEEN DETERMINED AND DEVIATIONS WILL BE CAUSE FOR REJECTION. REMOVE ALL BURRS AND SHARP EDGES

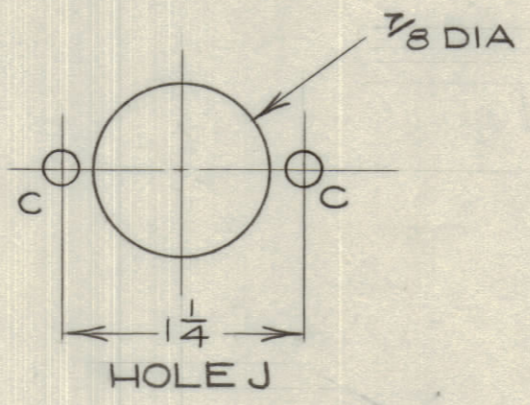
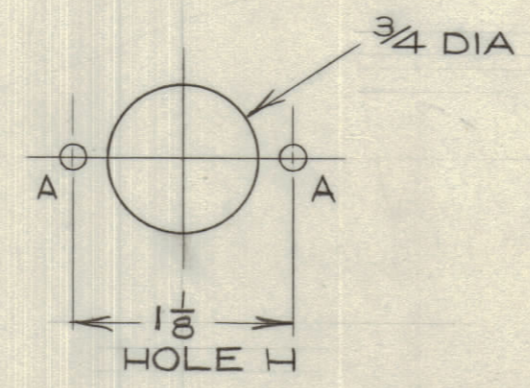
NOTICE TO PERSONS RECEIVING THIS DRAWING

THE TECHNICAL MATERIEL CORPORATION claims proprietary right in the material disclosed hereon. This drawing is issued in confidence for engineering information only and may not be re-produced or used to manufacture anything shown hereon without permission from THE TECHNICAL MATERIEL CORPORATION to the user. This drawing is loaned for mutual assistance and is subject to recall at any time.

Property of:
THE TECHNICAL MATERIEL CORPORATION
MAMARONECK, NEW YORK



- HOLE A - 1/8 DIA
- HOLE B - 9/64 DIA
- HOLE C - 1/16 DIA
- HOLE D - 7/32 DIA
- HOLE E - 1/4 DIA
- HOLE F - 3/8 DIA
- HOLE G - 7/16" DIA HOLE



1/16" NOTCH
4 CORNERS

BEND UP ON ALL BENDLINES

MS10300

ISSUE	ITEM	CHANGED FROM	DATE	CN. NO.	DRAFTS	CHECKER	ENG. APP.
TOLERANCES							
SCALE: 1 : 1				DRILL, PUNCH, COMMERCIAL STOCK SIZES AND MANUFACTURERS TOLERANCES ARE NOT INCLUDED.			
ALL OTHERS	DEC. DIM. ± 1/64		ANGULAR DIM. ±				

AMC6-5 CE646 MAR 3/59

MODEL PROJECT No. ASS'Y. No. DATE

USED ON

REQ.	ITEM	PART No.	DESCRIPTION	SYMBOL
1	1		CHASSIS	
7 3/4 X 7 5/8			TMC (Canada) LIMITED	
STOCK SIZE			OTTAWA ONTARIO	
14GA ALUM			CHASSIS - FRONT END	
MATERIAL			WEIGHT PER PC.	
TYPE & TEMPER			DCM	
DRAWN			ELEC. DES. APP. <i>A. Kramer</i>	
HEAT TREAT. SPEC.			MECH. DES. APP. <i>TMC</i>	
CHECKED			FINAL APPROVAL	
ETCH + IRIDITE			FINISH & SPEC. No.	
				MS10300

IF IT IS FOUND DESIRABLE TO CHANGE ANY TOLERANCE OR OTHER DETAIL SPECIFIED ON THIS DRAWING NOTIFY THE PURCHASER PROMPTLY.					DIMENSIONS IN INCHES UNLESS OTHERWISE SPECIFIED		
MAXIMUM ALLOWABLE TOLERANCES HAVE BEEN DETERMINED AND DEVIATIONS WILL BE CAUSE FOR REJECTION. REMOVE ALL BURRS AND SHARP EDGES.							
ISSUE	ITEM	CHANGED FROM	DATE	CR. NO.	DRAFTER	CHECKER	ENG. APP.
A	1	REDRAWN HOLE D WAS 7/32 DIA.	DEC 3/62		JPC	JG	
B	2	D HOLE WAS 7/32 DIA DRILL & CSK ON G,H,J HOLES SEE DET ADD. STOCK SIZE WAS .64 SQ. INS. MAT. WAS 6064 AL SHEET TYPE & TEMPER WAS 375S-H32 S101-ETCH DELE. P.F. FINISH 3/32 DIM DELETED	5/25/64	11407	A.M.	W	

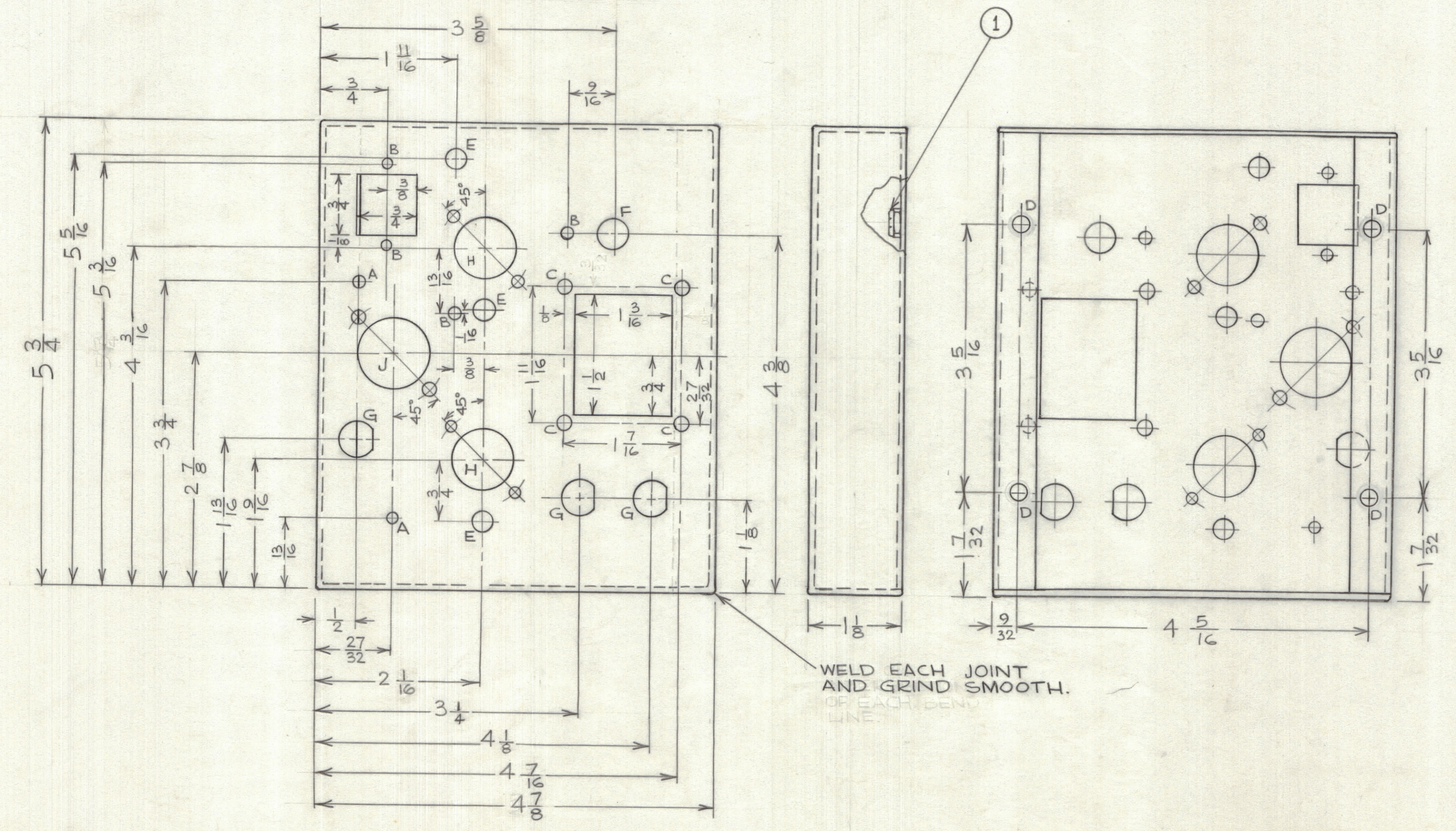
NOTICE TO PERSONS RECEIVING THIS DRAWING

THE TECHNICAL MATERIEL CORPORATION claims proprietary right in the material disclosed hereon. This drawing is issued in confidence for engineering information only and may not be reproduced or used to manufacture anything shown hereon without permission from THE TECHNICAL MATERIEL CORPORATION to the user. This drawing is loaned for mutual assistance and is subject to recall at any time.

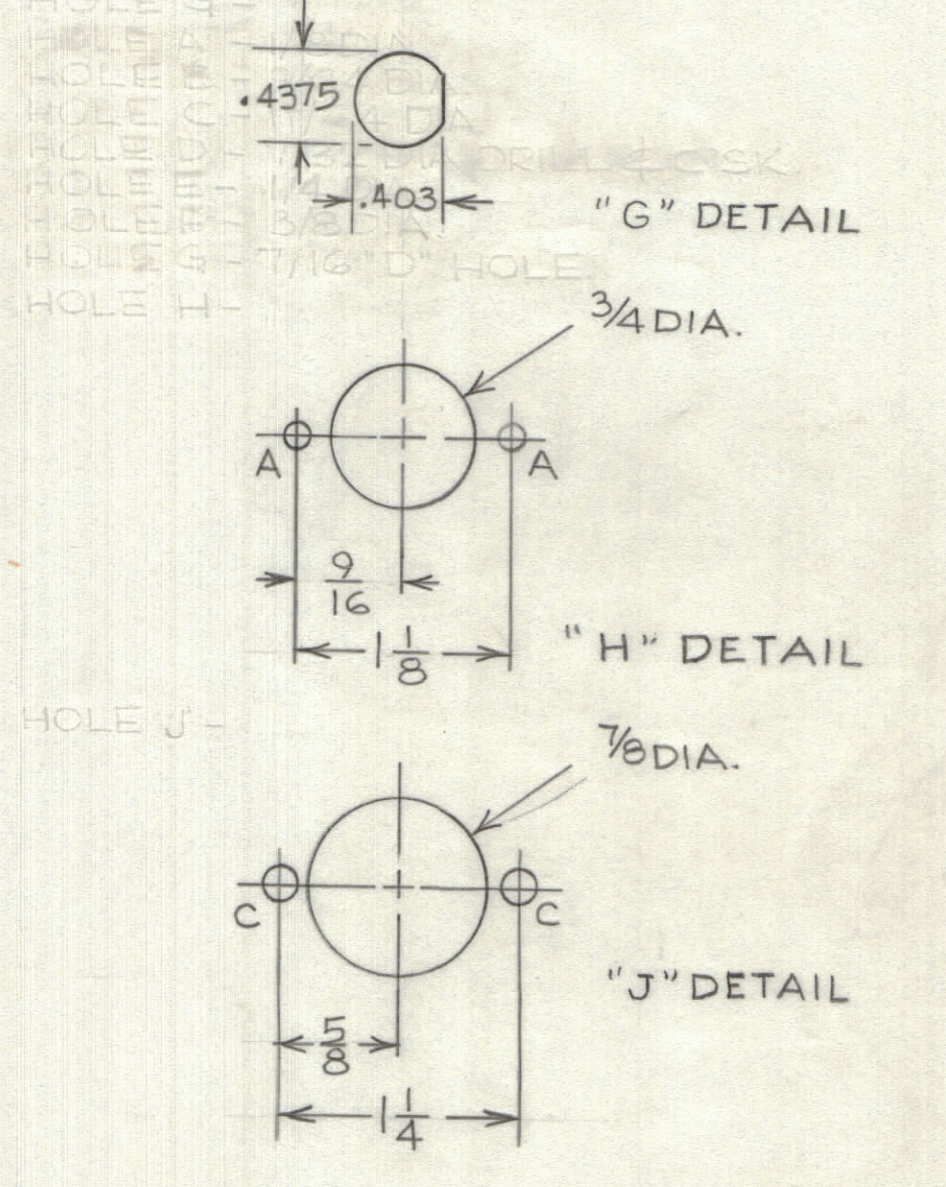
Property of:
THE TECHNICAL MATERIEL CORPORATION
MAMARONECK, NEW YORK

REQ.	ITEM	PART NO.	DESCRIPTION	SYMBOL
4	1	SM-III-D306	NUT, CLINCH	

HOLE	DESCRIPTION	REQ.
A	1/8 DIA.	6
B	9/64 DIA.	4
C	11/64 DIA.	6
D	7/32 DIA.	4
E	1/4 DIA.	3
F	3/8 DIA.	1
G	SEE DETAIL	3
H	SEE DETAIL	2
J	SEE DETAIL	1



HOLE A - 1/8 DIA.
HOLE B - 9/64 DIA.
HOLE C - 11/64 DIA.
HOLE D - 7/32 DIA. DRILL & CSK. (FOR MTG. SM-III-D306).
HOLE E - 1/4 DIA.
HOLE F - 3/8 DIA.



REF: (4)LD-10052

TOLERANCES	SCALE: N.T.S.
ALL DEC DIM. ± 1/64	DRILL, PUNCH, COMMERCIAL STOCK SIZES AND MANUFACTURER'S TOLERANCES ARE NOT INCLUDED.
OTHERS ANGULAR DIM. ±	

AMC 6-5	PROJECT NO.	ASSY. NO.	DATE	HEAT TREAT. SPEC.	FINISH & SPEC. NO.
			DEC. 4, 1962	S404 IRIDITE	
USED ON					

STOCK SIZE		TMC (Canada) LIMITED	
ALUMINUM		OTTAWA ONTARIO	
MATERIAL		CHASSIS - FRONT END	
5052-H32		JPC	
TYPE & TEMPER		DRAWN	
		ELEC. DES. APP. [Signature]	
		MECH. DES. APP. [Signature]	
		CHECKED [Signature]	
		FINAL APPROVAL [Signature]	
		MS-10300 B	