

IF IT IS FOUND DESIRABLE TO CHANGE ANY TOLERANCE OR OTHER DETAIL SPECIFIED ON THIS DRAWING NOTIFY THE PURCHASER PROMPTLY.

MS10298

MAXIMUM ALLOWABLE TOLERANCES HAVE BEEN DETERMINED AND DEVIATIONS WILL BE CAUSE FOR REJECTION. REMOVE ALL BURRS AND SHARP EDGES

USED ON

MODEL

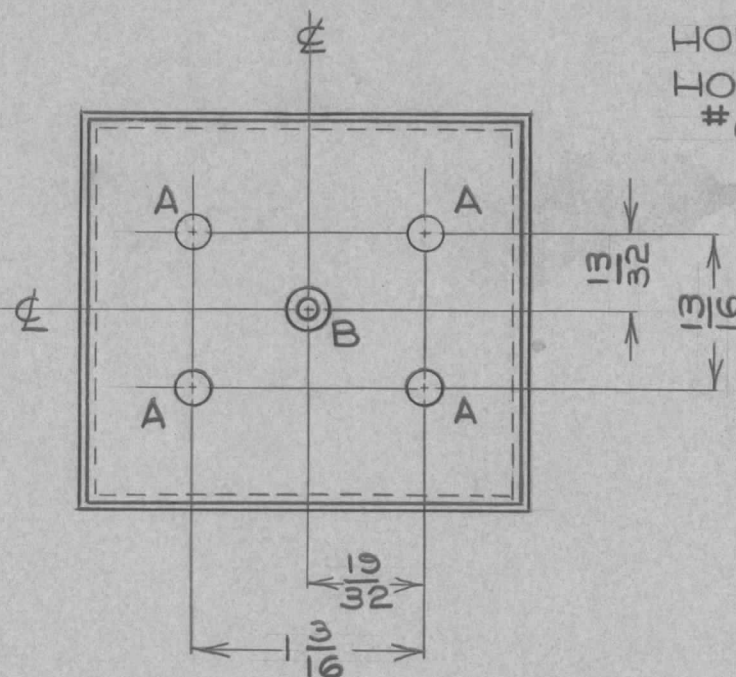
PROJECT NO.

ASS'Y. NO.

DATE

AMC6-5 CE646

FEB 24/52



HOLE A - 1/64 DIA - 4 REQ'D
HOLE B - 9/64 DIA, C'SK FOR #6 F.H. SCREW - 1 REQ'D

VIEW OF BASE OF CAN BX100-8S
MODIFIED TO TAKE 4 TERMINALS
TE101-1 PLUS 6-32 FH SCREW

REF	ITEM	PART NO.	DESCRIPTION	SYMBOL
1		BX100-8S	CASE & COVERS	
			TMC (Canada) LIMITED OTTAWA ONTARIO	
STOCK SIZE			MOD. TO CAN BX100-8S FOR FILTER-AMC 6-5	
MATERIAL		WEIGHT PER PC.	DCM	
TYPE & TEMPER			M. Krauer	
HEAT TREAT. SPEC.			DRAWN ELEC. DES. APP. MECH. DES. APP.	
FINISH & SPEC. NO.			M. Krauer / SAC	
			CHECKED FINAL APPROVAL	
			MS10298	

ISSUE	ITEM	CHANGED FROM	DATE	CN. NO.	DRAFTS	CHECKER	ENG. APP.

TOLERANCES

SCALE NTS

ALL OTHERS

DEC. DIM. ±
FRAC. DIM. ±
ANGULAR DIM. ±

DRILL, PUNCH, COMMERCIAL STOCK SIZES AND MANUFACTURERS TOLERANCES ARE NOT INCLUDED.