

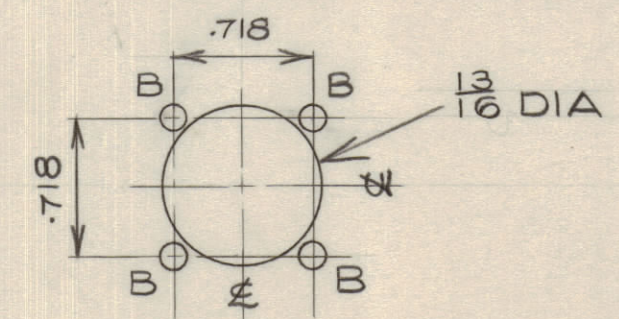
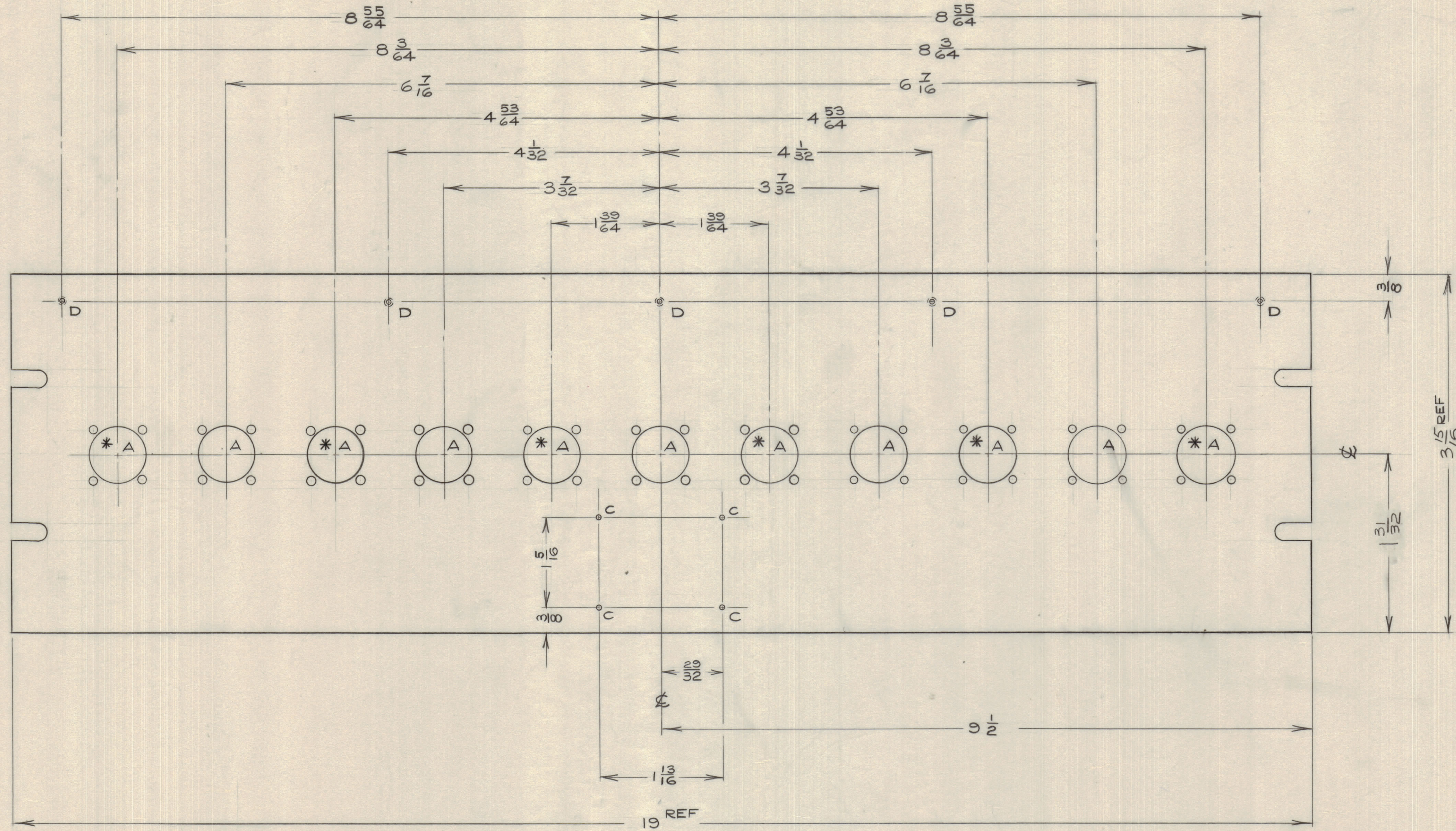
IF IT IS FOUND DESIRABLE TO CHANGE ANY TOLERANCE OR OTHER DETAIL SPECIFIED ON THIS DRAWING NOTIFY THE PURCHASER PROMPTLY.

MAXIMUM ALLOWABLE TOLERANCES HAVE BEEN DETERMINED AND DEVIATIONS WILL BE CAUSE FOR REJECTION. REMOVE ALL BURRS AND SHARP EDGES.

NOTICE TO PERSONS RECEIVING THIS DRAWING

THE TECHNICAL MATERIEL CORPORATION claims proprietary right in the material disclosed herein. This drawing is issued in confidence for engineering information only and may not be reproduced or used to manufacture anything shown herein without permission from THE TECHNICAL MATERIEL CORPORATION to the user. This drawing is loaned for mutual assistance and is subject to recall at any time.

Property of:
THE TECHNICAL MATERIEL CORPORATION
MAMARONECK, NEW YORK



HOLE A - 11 REQ'D FOR ITEM 2
6 REQ'D FOR ITEM 1

HOLE B - #33 DRILL
HOLE C - #50 DRILL
HOLE D - DRILL & TAP 4-40

NOTE:
FOR ITEM 1 DRILL HOLE "A" ONLY
WHERE MARKED WITH ASTERISK (*)

MS10296

ISSUE	ITEM	CHANGED FROM	DATE	CN. NO.	DRAFTS	CHECKER	ENG. APP.
TOLERANCES							
SCALE: 1:1							
ALL OTHERS		DEC. DIM. ± .005 FRAC. DIM. ± 1/64 ANGULAR DIM. ±		DRILL, PUNCH, COMMERCIAL STOCK SIZES AND MANUFACTURERS TOLERANCES ARE NOT INCLUDED.			

MODEL	PROJECT NO.	ASS'Y. NO.	DATE
USED ON			

2	MS-157-3S	PANEL - 11 CONNECTOR
1	MS-157-3S	PANEL - 6 CONNECTOR
REQ. ITEM	PART NO.	DESCRIPTION
STOCK SIZE		
MATERIAL		
TYPE & TEMPER		
HEAT TREAT. SPEC.		
FINISH & SPEC. NO.		
<p style="text-align: center;">TMC (Canada) LIMITED OTTAWA ONTARIO</p> <p style="text-align: center;">FRONT PANEL-MACHINING MODEL QDP, SERIES 4</p> <p>DCM DRAWN: [Signature] ELEC. DES. APP. [Signature] MECH. DES. APP. [Signature] CHECKED: [Signature] FINAL APPROVAL [Signature]</p>		
MS10296		