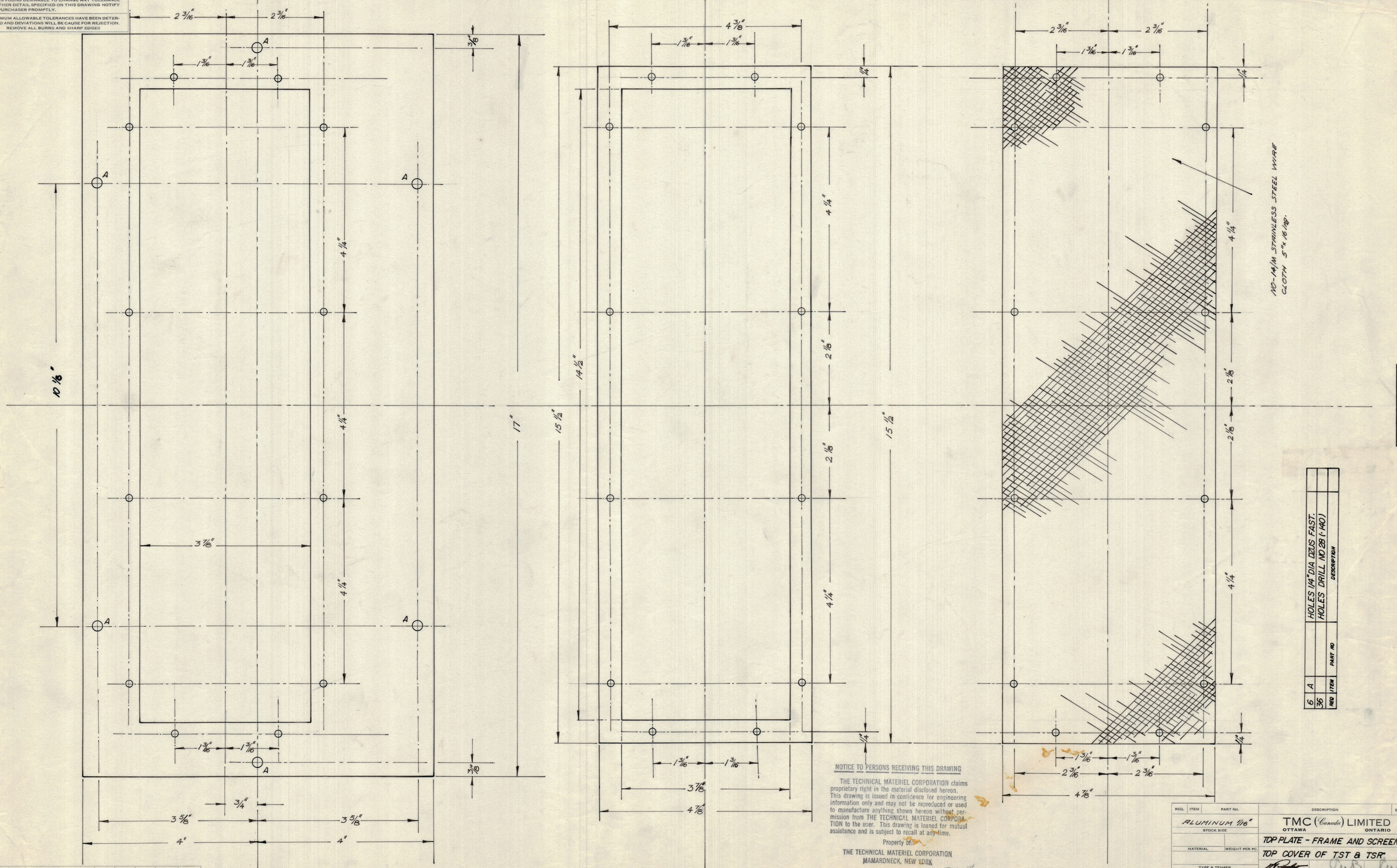


IF IT IS FOUND DESIRABLE TO CHANGE ANY TOLERANCE OR OTHER DETAIL SPECIFIED ON THIS DRAWING NOTIFY THE PURCHASER PROMPTLY.
 MAXIMUM ALLOWABLE TOLERANCES HAVE BEEN DETERMINED AND DEVIATIONS WILL BE CAUSE FOR REJECTION. REMOVE ALL BURRS AND SHARP EDGES



MS-10 267

REQ	ITEM	PART NO	DESCRIPTION
6	A		HOLES 1/4" DIA DRUS FAST.
36			HOLES DRILL NO 28 (140)

NOTICE TO PERSONS RECEIVING THIS DRAWING
 THE TECHNICAL MATERIEL CORPORATION claims proprietary right in the material disclosed hereon. This drawing is issued in confidence for engineering information only and may not be reproduced or used to manufacture anything shown hereon without permission from THE TECHNICAL MATERIEL CORPORATION to the user. This drawing is loaned for mutual assistance and is subject to recall at any time.
 Property of:
 THE TECHNICAL MATERIEL CORPORATION
 MAMARONECK, NEW YORK

REQ. ITEM	PART NO.	DESCRIPTION	SYMBOL
ALUMINUM 1/16"		TMC (Canada) LIMITED OTTAWA ONTARIO	
STOCK SIZE		TOP PLATE - FRAME AND SCREEN	
MATERIAL	WEIGHT PER PC	TOP COVER OF TST & TSR	
TYPE & TEMPER		DRAWN: <i>MSM</i> ELEC. DES. APP. <i>MSM</i> MECH. DES. APP. <i>MSM</i>	
HEAT TREAT. SPEC.		CHECKED: <i>MSM</i> FINAL APPROVAL: <i>MSM</i>	
FINISH & SPEC. NO.		MS-10 267	

ISSUE	ITEM	CHANGED FROM	DATE	CN. NO.	DRAFTS	CHECKER	ENG. APP.
TOLERANCES							
SCALE:							
ALL OTHERS	DEC. DIM. ±	DRILL, PUNCH, COMMERCIAL STOCK					
	FRAC. DIM. ±	SIZES AND MANUFACTURERS					
	ANGULAR DIM. ±	TOLERANCES ARE NOT INCLUDED.					