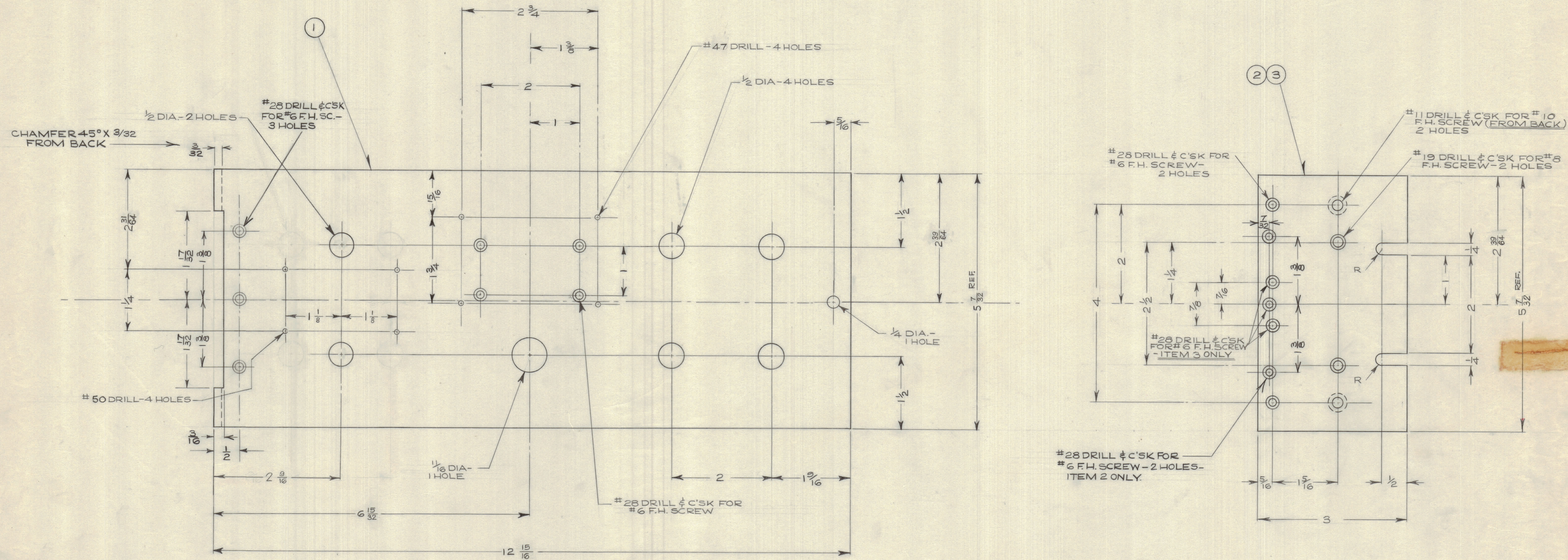


IF IT IS FOUND DESIRABLE TO CHANGE ANY TOLERANCE OR OTHER DETAIL SPECIFIED ON THIS DRAWING NOTIFY THE PURCHASER PROMPTLY.
 MAXIMUM ALLOWABLE TOLERANCES HAVE BEEN DETERMINED AND DEVIATIONS WILL BE CAUSE FOR REJECTION. REMOVE ALL BURRS AND SHARP EDGES

NOTICE TO PERSONS RECEIVING THIS DRAWING

THE TECHNICAL MATERIEL CORPORATION claims proprietary right in the material disclosed hereon. This drawing is issued in confidence for engineering information only and may not be reproduced or used to manufacture anything shown hereon without permission from THE TECHNICAL MATERIEL CORPORATION to the user. This drawing is loaned for mutual assistance and is subject to recall at any time.

Property of:
 THE TECHNICAL MATERIEL CORPORATION
 MAMARONECK, NEW YORK



A	6 $\frac{15}{16}$ WAS 6 $\frac{27}{64}$	MAR. 21/60	MK				
	# 47 DRILL HOLE WAS # 50 DRILL HOLE						
	2 $\frac{39}{64}$ WAS 2 $\frac{18}{32}$						
	5 $\frac{7}{16}$ REF WAS 5 $\frac{3}{8}$						
	2 $\frac{31}{64}$ WAS 2 $\frac{3}{32}$						
	12 $\frac{15}{16}$ WAS 12 $\frac{37}{32}$						
	2 HOLES $\frac{1}{2}$ DIA ADDED 4 HOLES $\frac{1}{2}$ DIA OMITTED						
ISSUE	ITEM	CHANGED FROM	DATE	CN. NO.	DRAFTS	CHECKER	ENG. APP.
TOLERANCES		SCALE: 1:1		DRILL, PUNCH, COMMERCIAL STOCK SIZES AND MANUFACTURERS TOLERANCES ARE NOT INCLUDED.			
ALL OTHERS	DEC. DIM. \pm	FRAC. DIM. \pm	ANGULAR DIM. \pm				

REQ. ITEM	PART NO.	DESCRIPTION	SYMBOL
1 3		R.H. SECTION	
1 2		L.H. SECTION	
1 1		CENTRE SECTION	
7 5 $\frac{32}{32}$ X $\frac{3}{16}$ TK.		TMC (Canada) LIMITED OTTAWA ONTARIO	
13" ALUM. PANEL		MACHINING DETAILS	
FRONT PANEL TST-1 & TSP-1		DCM OCT 22 58	
HEAT TREAT. SPEC.		DRAWN: DCM ELEC. DES. APP. [Signature] MECH. DES. APP. [Signature]	
FINISH & SPEC. No.		CHECKED: [Signature] FINAL APPROVAL: [Signature]	
MODEL		PROJECT No.	ASS'Y. No.
USED ON		DATE	
MS10238 A			

A MS10238