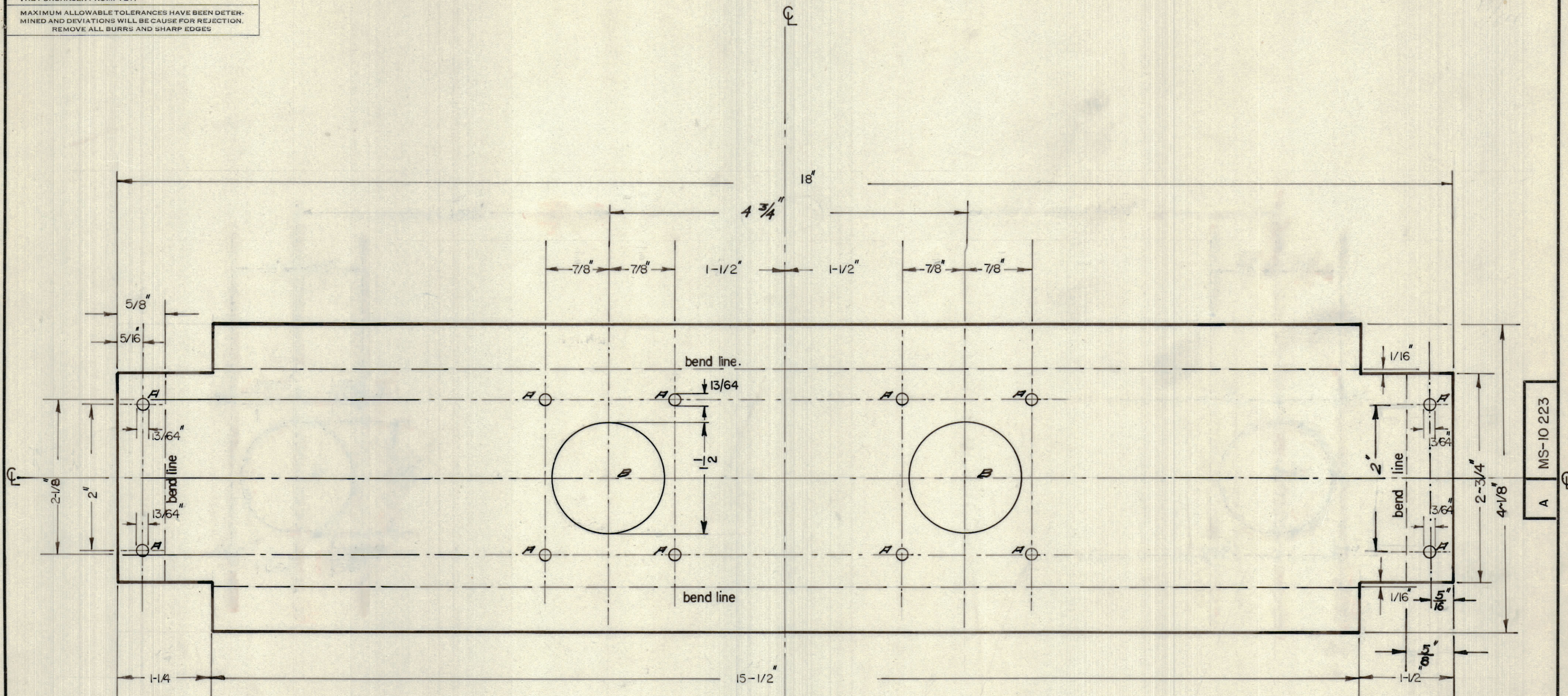


IF IT IS FOUND DESIRABLE TO CHANGE ANY TOLERANCE OR OTHER DETAIL SPECIFIED ON THIS DRAWING NOTIFY THE PURCHASER PROMPTLY.

MAXIMUM ALLOWABLE TOLERANCES HAVE BEEN DETERMINED AND DEVIATIONS WILL BE CAUSE FOR REJECTION. REMOVE ALL BURRS AND SHARP EDGES



NOTE: BEND UP ON DOTTED LINES AT 90°

NOTICE TO PERSONS RECEIVING THIS DRAWING

THE TECHNICAL MATERIEL CORPORATION claims proprietary right in the material disclosed hereon. This drawing is issued in confidence for engineering information only and may not be reproduced or used to manufacture anything shown hereon without permission from THE TECHNICAL MATERIEL CORPORATION to the user. This drawing is loaned for mutual assistance and is subject to recall at any time.

Property of:

THE TECHNICAL MATERIEL CORPORATION
MAMARONECK, NEW YORK

| | | | | | |
|------------|---|---|------|---------|--------------------------|
| A | 2 B-HOLES OMITTED 8 A-HOLES OMITTED | 2/3/60 | MK | | |
| ISSUE | ITEM | CHANGED FROM | DATE | CN. NO. | DRAFTS CHECKER ENG. APP. |
| TOLERANCES | | SCALE: | | | |
| ALL OTHERS | DEC. DIM. ± FRAC. DIM. ± ANGULAR DIM. ± | DRILL, PUNCH, COMMERCIAL STOCK SIZES AND MANUFACTURERS TOLERANCES ARE NOT INCLUDED. | | | |

TTF - 2

| | | | |
|-------|-------------|------------|------------|
| MODEL | PROJECT No. | ASS'Y. No. | DATE |
| | | | Oct. 1. 58 |

| | | |
|------------------------|----------------|------------------------------|
| 12 | A | HOLES 13/64" DIA |
| 2 | B | " 1 1/2" " |
| REQ. ITEM | PART No. | DESCRIPTION |
| 18 x 4 1/8" x 16 GAUGE | | TMC (Canada) LIMITED |
| STOCK SIZE | | OTTAWA ONTARIO |
| ALUM. | | BARRIER FOR CHASSIS OF TTF-2 |
| MATERIAL | WEIGHT PER PC. | TONE TRANSMIT FILTER |
| TYPE & TEMPER | | DRN [Signature] |
| HEAT TREAT. SPEC. | | ELEC. DES. APP. [Signature] |
| | | MECH. DES. APP. [Signature] |
| | | CHECKED [Signature] |
| | | FINAL APPROVAL |
| | | MS-10 223 |
| | | A |