

IF IT IS FOUND DESIRABLE TO CHANGE ANY TOLERANCE OR OTHER DETAIL SPECIFIED ON THIS DRAWING NOTIFY THE PURCHASER PROMPTLY.

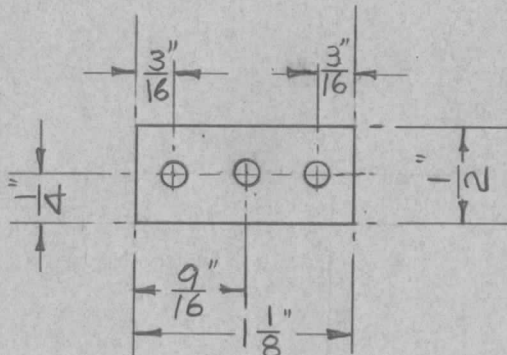
MS-10102

MAXIMUM ALLOWABLE TOLERANCES HAVE BEEN DETERMINED AND DEVIATIONS WILL BE CAUSE FOR REJECTION. REMOVE ALL BURRS AND SHARP EDGES

USED ON

MODEL	PROJECT NO.	ASS'Y. NO.	DATE
-------	-------------	------------	------

A-10049 31/10/55



3 HOLES DRILL & TAP FOR 6-32

REQ.	ITEM	PART NO.	DESCRIPTION	SYMBOL
		1/8" SHEET	TMC (Canada) LIMITED OTTAWA ONTARIO	
		STOCK SIZE		
		ALUMINUM	STUD (BOTTOM COVER)	
		MATERIAL	LF/MF BEACON C/O DUMMY LOAD	
		WEIGHT PER PC.		
		TYPE & TEMPER	Z. Champ.	
		HEAT TREAT. SPEC.	DRAWN	ELEC. DES. APP. MECH. DES. APP.
		FINISH & SPEC. NO.	CHECKED	FINAL APPROVAL
				MS-10102

ISSUE	ITEM	CHANGED FROM	DATE	CN. NO.	DRAFTS	CHECKER	ENG. APP.
-------	------	--------------	------	---------	--------	---------	-----------

TOLERANCES

SCALE

ALL OTHERS

DEC. DIM. ±  
FRAC. DIM. ±  
ANGULAR DIM. ±

DRILL, PUNCH, COMMERCIAL STOCK SIZES AND MANUFACTURERS TOLERANCES ARE NOT INCLUDED.

IF IT IS FOUND DESIRABLE TO CHANGE ANY TOLERANCE OR OTHER DETAIL SPECIFIED ON THIS DRAWING NOTIFY THE PURCHASER PROMPTLY.

MS-10103

MAXIMUM ALLOWABLE TOLERANCES HAVE BEEN DETERMINED AND DEVIATIONS WILL BE CAUSE FOR REJECTION. REMOVE ALL BURRS AND SHARP EDGES

USED ON

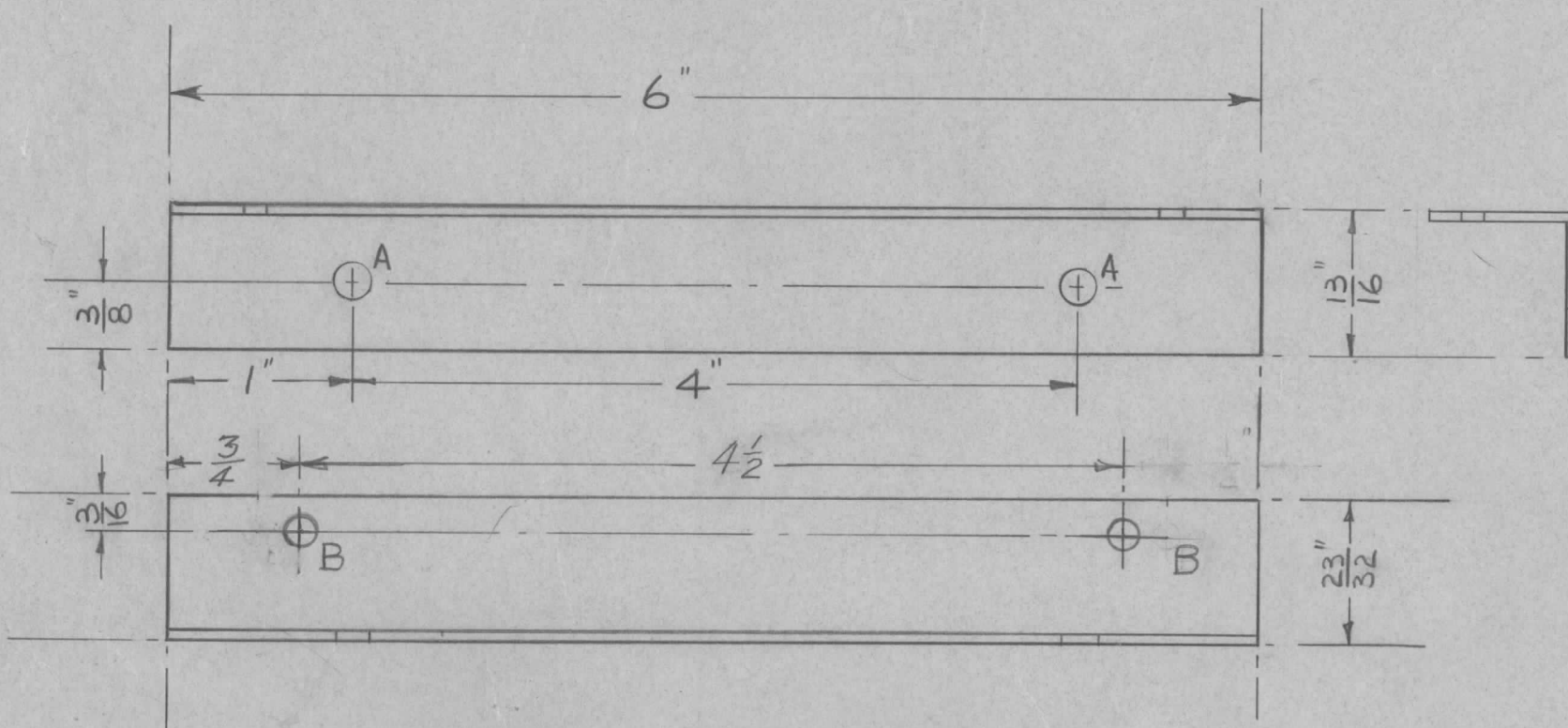
MODEL

PROJECT NO.

ASS'Y. NO.

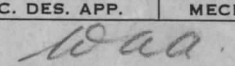
DATE

A-10048 29/8/55



A  $\frac{3}{16}$  PUNCH 2 HOLES  
 B  $\frac{3}{64}$  PUNCH 2 HOLES

TWO REQUIRED

REQ.	ITEM	PART NO.	DESCRIPTION	SYMBOL
		.064 SHEET	TMC (Canada) LIMITED OTTAWA ONTARIO	
		STOCK SIZE		
		ALUMINUM	BRACKET	
		MATERIAL	LF/MF BEACON 90 DUMMY LOAD	
		WEIGHT PER PC.		
		575 $\frac{1}{4}$ HARD	E. Cheng	
		TYPE & TEMPER		
			DRAWN	ELEC. DES. APP.
				
			CHECKED	FINAL APPROVAL
		HEAT TREAT. SPEC.		
		TMC-5101 & 5107		
		FINISH & SPEC. NO.	MS-10103	

ISSUE	ITEM	CHANGED FROM	DATE	CN. NO.	DRAFTS	CHECKER	ENG. APP.
TOLERANCES			SCALE				
ALL OTHERS	DEC. DIM. $\pm$	FRAC. DIM. $\pm \frac{1}{64}$	DRILL, PUNCH, COMMERCIAL STOCK SIZES AND MANUFACTURERS TOLERANCES ARE NOT INCLUDED.				
	ANGULAR DIM. $\pm$						

IF IT IS FOUND DESIRABLE TO CHANGE ANY TOLERANCE OR OTHER DETAIL SPECIFIED ON THIS DRAWING NOTIFY THE PURCHASER PROMPTLY.

MS-10107

MAXIMUM ALLOWABLE TOLERANCES HAVE BEEN DETERMINED AND DEVIATIONS WILL BE CAUSE FOR REJECTION. REMOVE ALL BURRS AND SHARP EDGES

USED ON

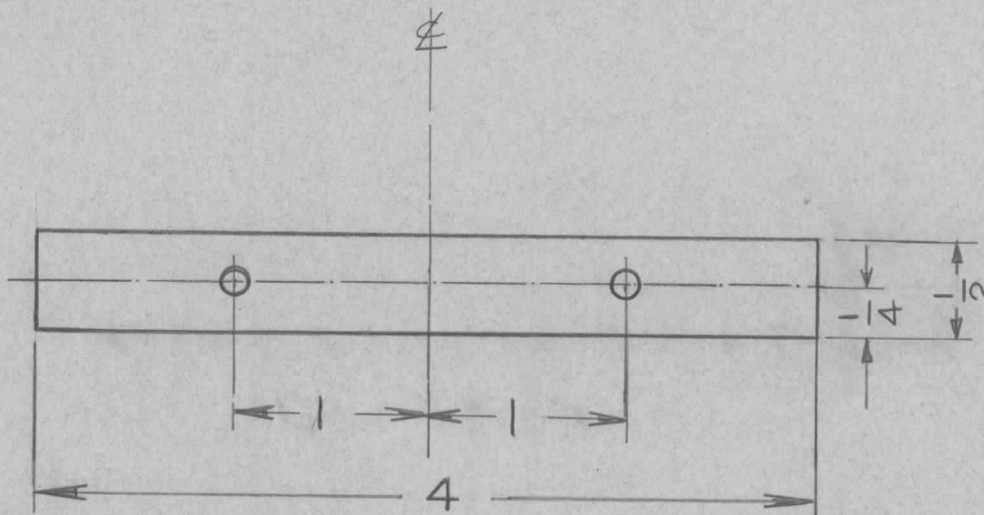
MODEL

PROJECT NO.

ASS'Y. NO.

DATE

A-10049 8-11-55  
A-10050



NOTICE TO PERSONS RECEIVING THIS DRAWING

THE TECHNICAL MATERIEL CORPORATION claims proprietary right in the material disclosed hereon. This drawing is issued in confidence for engineering information only and may not be reproduced or used to manufacture anything shown hereon without permission from THE TECHNICAL MATERIEL CORPORATION to the user. This drawing is loaned for mutual assistance and is subject to recall at any time.

Property of:

THE TECHNICAL MATERIEL CORPORATION  
MAMARONECK, NEW YORK

4 REQUIRED PER UNIT  
TOP & BOTTOM COVERS

REQ.	ITEM	PART NO.	DESCRIPTION	SYMBOL
		0.064	TMC (Canada) LIMITED OTTAWA ONTARIO	
		STOCK SIZE		
		ALUMINUM	STRIP - SCREEN VENT FRAME	
		MATERIAL	WEIGHT PER PC.	
		57S - 1/4 HARD	LF/MF BEACON C/O DUMMY LOAD	
		TYPE & TEMPER	E.W.B.G.	
			DRAWN	ELEC. DES. APP. MECH. DES. APP.
				<i>wag</i>
		HEAT TREAT. SPEC.	CHECKED	FINAL APPROVAL
		TMC. 5101 - 5107		MS-10107
		FINISH & SPEC. NO.		

ISSUE	ITEM	CHANGED FROM	DATE	CN. NO.	DRAFTS	CHECKER	ENG. APP.
TOLERANCES			SCALE FULL				
ALL OTHERS	DEC. DIM. ± 1/64	FRAC. DIM. ± 1/64	DRILL, PUNCH, COMMERCIAL STOCK SIZES AND MANUFACTURERS TOLERANCES ARE NOT INCLUDED.				
	ANGULAR DIM. ±						



IF IT IS FOUND DESIRABLE TO CHANGE ANY TOLERANCE OR OTHER DETAIL SPECIFIED ON THIS DRAWING NOTIFY THE PURCHASER PROMPTLY.

MS-10125

MAXIMUM ALLOWABLE TOLERANCES HAVE BEEN DETERMINED AND DEVIATIONS WILL BE CAUSE FOR REJECTION. REMOVE ALL BURRS AND SHARP EDGES

USED ON

MODEL

PROJECT NO.

ASS'Y. NO.

DATE

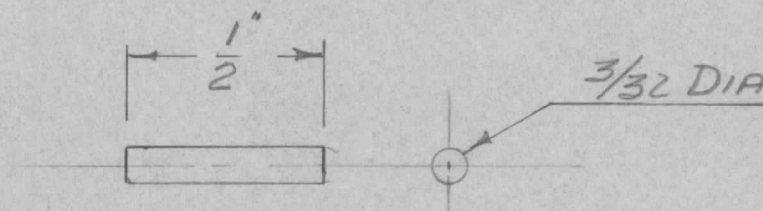
A-10067 3-11-55

NOTICE TO PERSONS RECEIVING THIS DRAWING

THE TECHNICAL MATERIEL CORPORATION claims proprietary right in the material disclosed hereon. This drawing is issued in confidence for engineering information only and may not be reproduced or used to manufacture anything shown hereon without permission from THE TECHNICAL MATERIEL CORPORATION to the user. This drawing is loaned for mutual assistance and is subject to recall at any time.

Property of:

THE TECHNICAL MATERIEL CORPORATION  
MAMARONECK, NEW YORK



REQ.	ITEM	PART NO.	DESCRIPTION	SYMBOL
		$\frac{1}{2} \times \frac{3}{32}$ DIA.	TMC (Canada) LIMITED OTTAWA ONTARIO	
		STOCK SIZE		
		DRILL ROD	HINGE PIN	
		MATERIAL	TEMPER. R.F. SWITCHING UNIT	
		WEIGHT PER PC.		
		TYPE & TEMPER		
		HEAT TREAT. SPEC.		
		FINISH & SPEC. NO.		

ISSUE	ITEM	CHANGED FROM	DATE	CN. NO.	DRAFTS	CHECKER	ENG. APP.
TOLERANCES			SCALE $1" = \frac{1}{2}"$				
ALL OTHERS	DEC. DIM. $\pm \frac{1}{64}$ FRAC. DIM. $\pm \frac{1}{64}$ ANGULAR DIM. $\pm$		DRILL, PUNCH, COMMERCIAL STOCK SIZES AND MANUFACTURERS TOLERANCES ARE NOT INCLUDED.				

DRAWN: L. MABION  
ELEC. DES. APP.: *Waa*  
MECH. DES. APP.: *Waa*  
CHECKED: \_\_\_\_\_  
FINAL APPROVAL: \_\_\_\_\_  
MS-10125



IF IT IS FOUND DESIRABLE TO CHANGE ANY TOLERANCE OR OTHER DETAIL SPECIFIED ON THIS DRAWING NOTIFY THE PURCHASER PROMPTLY.

MS-10126

MAXIMUM ALLOWABLE TOLERANCES HAVE BEEN DETERMINED AND DEVIATIONS WILL BE CAUSE FOR REJECTION. REMOVE ALL BURRS AND SHARP EDGES

USED ON

MODEL

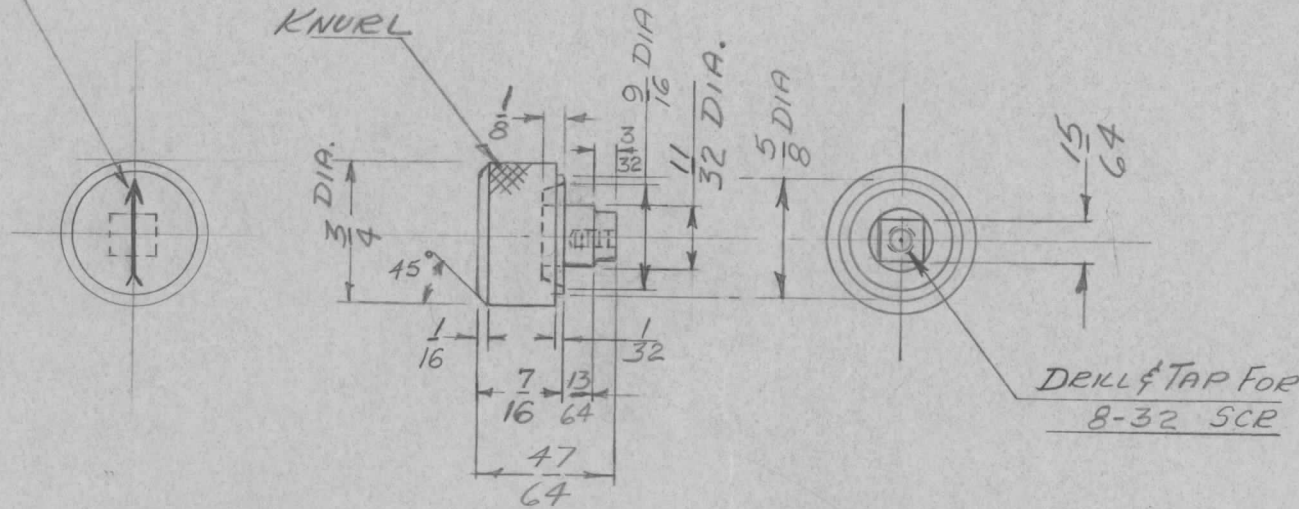
PROJECT NO.

ASS'Y. NO.

DATE

A-10047 3-11-55

ARROW TO BE ENGRAVED  
ON FACE OF BUTTON



REQ.	ITEM	PART NO.	DESCRIPTION	SYMBOL
		3/4 DIA. x 3/4	TMC (Canada) LIMITED OTTAWA ONTARIO	
		STOCK SIZE		
		BRASS	BUTTON FOR DOOR LATCH	
		MATERIAL	TEMP. R.F. SWITCHING UNIT.	
		WEIGHT PER PC.		
		TYPE & TEMPER	L. MARION	
			DRAWN	ELEC. DES. APP.
				MECH. DES. APP.
		HEAT TREAT. SPEC.	<i>Waa</i>	
		DULL NICKEL	CHECKED	FINAL APPROVAL
		FINISH & SPEC. NO.	MS-10126	

ISSUE	ITEM	CHANGED FROM	DATE	CN. NO.	DRAFTS	CHECKER	ENG. APP.

TOLERANCES

SCALE FULL SIZE

ALL OTHERS  
DEC. DIM. ± 1/64  
FRAC. DIM. ± 1/64  
ANGULAR DIM. ±

DRILL, PUNCH, COMMERCIAL STOCK  
SIZES AND MANUFACTURERS  
TOLERANCES ARE NOT INCLUDED.

IF IT IS FOUND DESIRABLE TO CHANGE ANY TOLERANCE OR OTHER DETAIL SPECIFIED ON THIS DRAWING NOTIFY THE PURCHASER PROMPTLY.

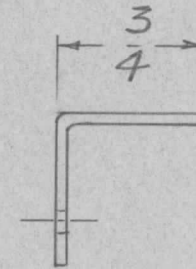
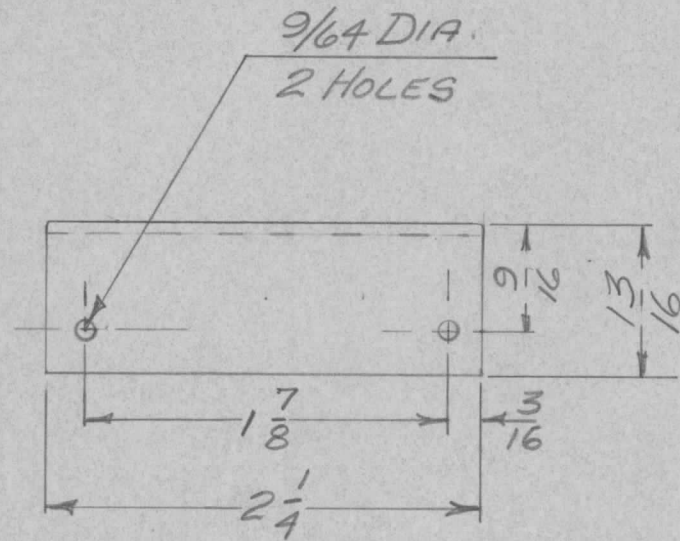
MS-10127

MAXIMUM ALLOWABLE TOLERANCES HAVE BEEN DETERMINED AND DEVIATIONS WILL BE CAUSE FOR REJECTION. REMOVE ALL BURRS AND SHARP EDGES

USED ON

MODEL	PROJECT NO.	ASS'Y. NO.	DATE
-------	-------------	------------	------

A-10046A 3-11-55



2 REQ'D PER UNIT

REQ.	ITEM	PART NO.	DESCRIPTION	SYMBOL
		064 SHEET	TMC (Canada) LIMITED OTTAWA ONTARIO	
		STOCK SIZE		
		031 ALUMINUM	SHIELD	
		57 S 1/4 HARD	TEMP. R.F. SWITCHING UNIT	
		TYPE & TEMPER	L. MARION	
		HEAT TREAT. SPEC.	DRAWN	ELEC. DES. APP. MECH. DES. APP.
		FINISH & SPEC. NO.	CHECKED	FINAL APPROVAL
				MS-10127

ISSUE	ITEM	CHANGED FROM	DATE	CN. NO.	DRAFTS	CHECKER	ENG. APP.
TOLERANCES			SCALE FULL SIZE				
ALL OTHERS	DEC. DIM. ±	FRAC. DIM. ± 1/64	DRILL, PUNCH, COMMERCIAL STOCK SIZES AND MANUFACTURERS TOLERANCES ARE NOT INCLUDED.				
	ANGULAR DIM. ±						

IF IT IS FOUND DESIRABLE TO CHANGE ANY TOLERANCE OR OTHER DETAIL SPECIFIED ON THIS DRAWING NOTIFY THE PURCHASER PROMPTLY.

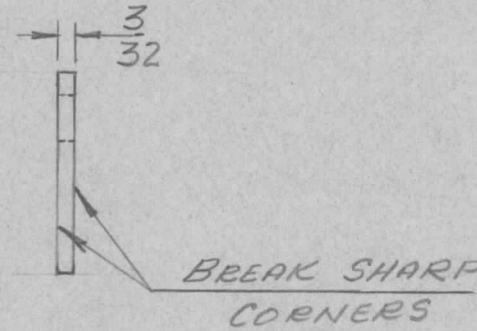
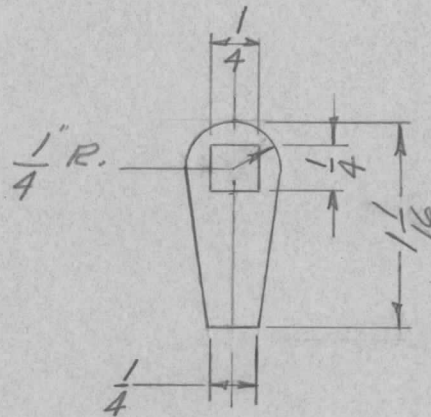
MS-10128

MAXIMUM ALLOWABLE TOLERANCES HAVE BEEN DETERMINED AND DEVIATIONS WILL BE CAUSE FOR REJECTION. REMOVE ALL BURRS AND SHARP EDGES

USED ON

MODEL	PROJECT NO.	ASS'Y. NO.	DATE
-------	-------------	------------	------

A-10047 3-11-55



NOTICE TO PERSONS RECEIVING THIS DRAWING

THE TECHNICAL MATERIEL CORPORATION claims proprietary right in the material disclosed hereon. This drawing is issued in confidence for engineering information only and may not be reproduced or used to manufacture anything shown hereon without permission from THE TECHNICAL MATERIEL CORPORATION to the user. This drawing is loaned for mutual assistance and is subject to recall at any time.

Property of:

THE TECHNICAL MATERIEL CORPORATION  
MAMARONECK, NEW YORK

REQ.	ITEM	PART NO.	DESCRIPTION	SYMBOL
			<b>TMC (Canada) LIMITED</b> OTTAWA ONTARIO	
STOCK SIZE				
3/32 ALUMINUM			KEEPER FOR DOOR LATCH	
MATERIAL		WEIGHT PER PC.	TEMP. R.F. SWITCHING UNIT	
57 S 1/2 HARD			L. MARION	
TYPE & TEMPER			DRAWN	ELEC. DES. APP. MECH. DES. APP.
			<i>Waa</i>	
HEAT TREAT. SPEC.			CHECKED	FINAL APPROVAL
TMC 5101 & 3107			<b>MS-10128</b>	
FINISH & SPEC. NO.				

ISSUE	ITEM	CHANGED FROM	DATE	CN. NO.	DRAFTS	CHECKER	ENG. APP.
TOLERANCES			SCALE FULL SIZE				
ALL OTHERS	DEC. DIM. ±	FRAC. DIM. ±	DRILL, PUNCH, COMMERCIAL STOCK SIZES AND MANUFACTURERS TOLERANCES ARE NOT INCLUDED.				
	ANGULAR DIM. ±						



IF IT IS FOUND DESIRABLE TO CHANGE ANY TOLERANCE OR OTHER DETAIL SPECIFIED ON THIS DRAWING NOTIFY THE PURCHASER PROMPTLY.

MS-10129

MAXIMUM ALLOWABLE TOLERANCES HAVE BEEN DETERMINED AND DEVIATIONS WILL BE CAUSE FOR REJECTION. REMOVE ALL BURRS AND SHARP EDGES

USED ON

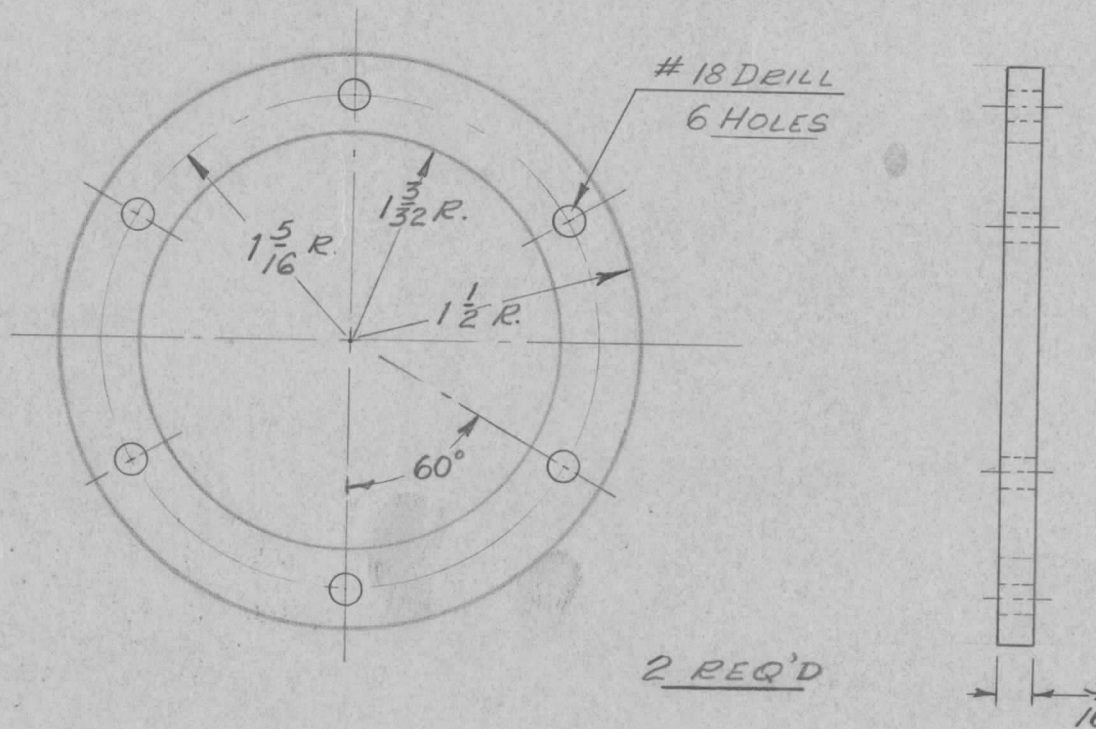
MODEL

PROJECT NO.

ASS'Y. NO.

DATE

A-10063 3-11-55



REQ.	ITEM	PART NO.	DESCRIPTION	SYMBOL
			<b>TMC (Canada) LIMITED</b> OTTAWA ONTARIO	
		STOCK SIZE		
		ALUMINUM	BASE PLATE - R.F. RELAY	
		MATERIAL	TRMTR. R.F. SWITCHING UNIT	
		65 ST		
		TYPE & TEMPER	L. MARION	
			DRAWN	ELEC. DES. APP. MECH. DES. APP.
		HEAT TREAT. SPEC.	<i>Waa</i>	
		TMC. 5101 & 5107	CHECKED	FINAL APPROVAL
		FINISH & SPEC. NO.	MS-10129	

ISSUE	ITEM	CHANGED FROM	DATE	CN. NO.	DRAFTS	CHECKER	ENG. APP.

TOLERANCES

SCALE

ALL OTHERS  
DEC. DIM.  $\pm$   
FRAC. DIM.  $\pm \frac{1}{64}$   
ANGULAR DIM.  $\pm$

DRILL, PUNCH, COMMERCIAL STOCK SIZES AND MANUFACTURERS TOLERANCES ARE NOT INCLUDED.



IF IT IS FOUND DESIRABLE TO CHANGE ANY TOLERANCE OR OTHER DETAIL SPECIFIED ON THIS DRAWING NOTIFY THE PURCHASER PROMPTLY.

MAXIMUM ALLOWABLE TOLERANCES HAVE BEEN DETERMINED AND DEVIATIONS WILL BE CAUSE FOR REJECTION. REMOVE ALL BURRS AND SHARP EDGES

MS-10131

USED ON

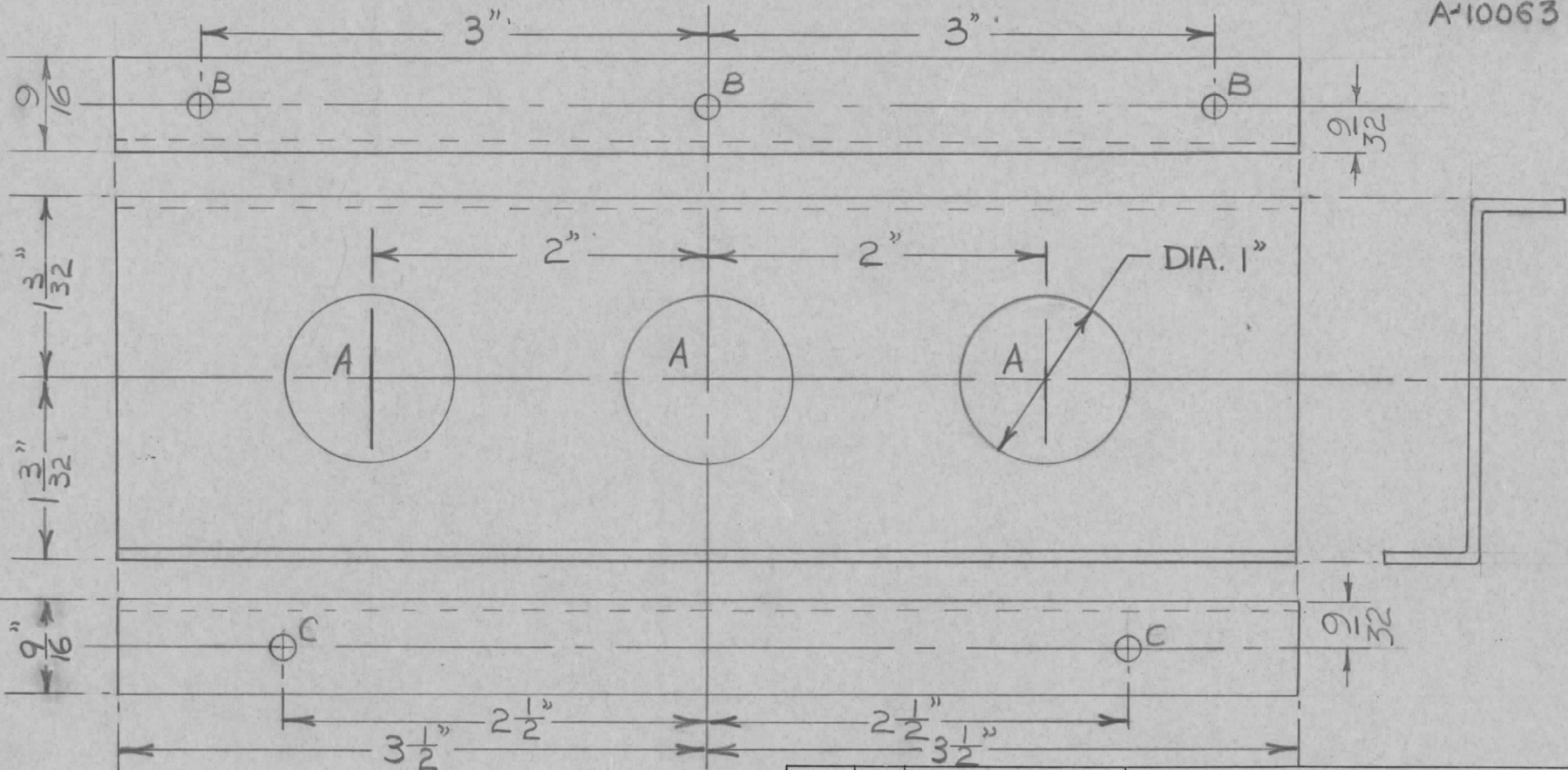
MODEL

PROJECT NO.

ASS'Y. NO.

DATE

A-10063 2/8/55



B - 9/64 DIA. 3 HOLES  
C - 1/4 DIA. 2 HOLES

REQ.	ITEM	PART NO.	DESCRIPTION	SYMBOL
			<b>TMC (Canada) LIMITED</b>	
			OTTAWA ONTARIO	
			BRACKET (PILOT LIGHTS)	
			TRMTR-RF SWITCHING UNIT	
			<i>E. Cheng</i>	
			DRAWN	ELEC. DES. APP. MECH. DES. APP.
			CHECKED	<i>Waa</i> FINAL APPROVAL
			HEAT TREAT. SPEC.	
			TMC. 5101 & 5107	MS-10131
			FINISH & SPEC. NO.	

ISSUE ITEM CHANGED FROM DATE CN. NO. DRAFTS CHECKER ENG. APP.

TOLERANCES

SCALE

ALL OTHERS

DEC. DIM.  $\pm$   
FRAC. DIM.  $\pm \frac{1}{64}$   
ANGULAR DIM.  $\pm$

DRILL, PUNCH, COMMERCIAL STOCK SIZES AND MANUFACTURERS TOLERANCES ARE NOT INCLUDED.



IF IT IS FOUND DESIRABLE TO CHANGE ANY TOLERANCE OR OTHER DETAIL SPECIFIED ON THIS DRAWING NOTIFY THE PURCHASER PROMPTLY.

MAXIMUM ALLOWABLE TOLERANCES HAVE BEEN DETERMINED AND DEVIATIONS WILL BE CAUSE FOR REJECTION.  
REMOVE ALL BURRS AND SHARP EDGES

MS-10132

USED ON

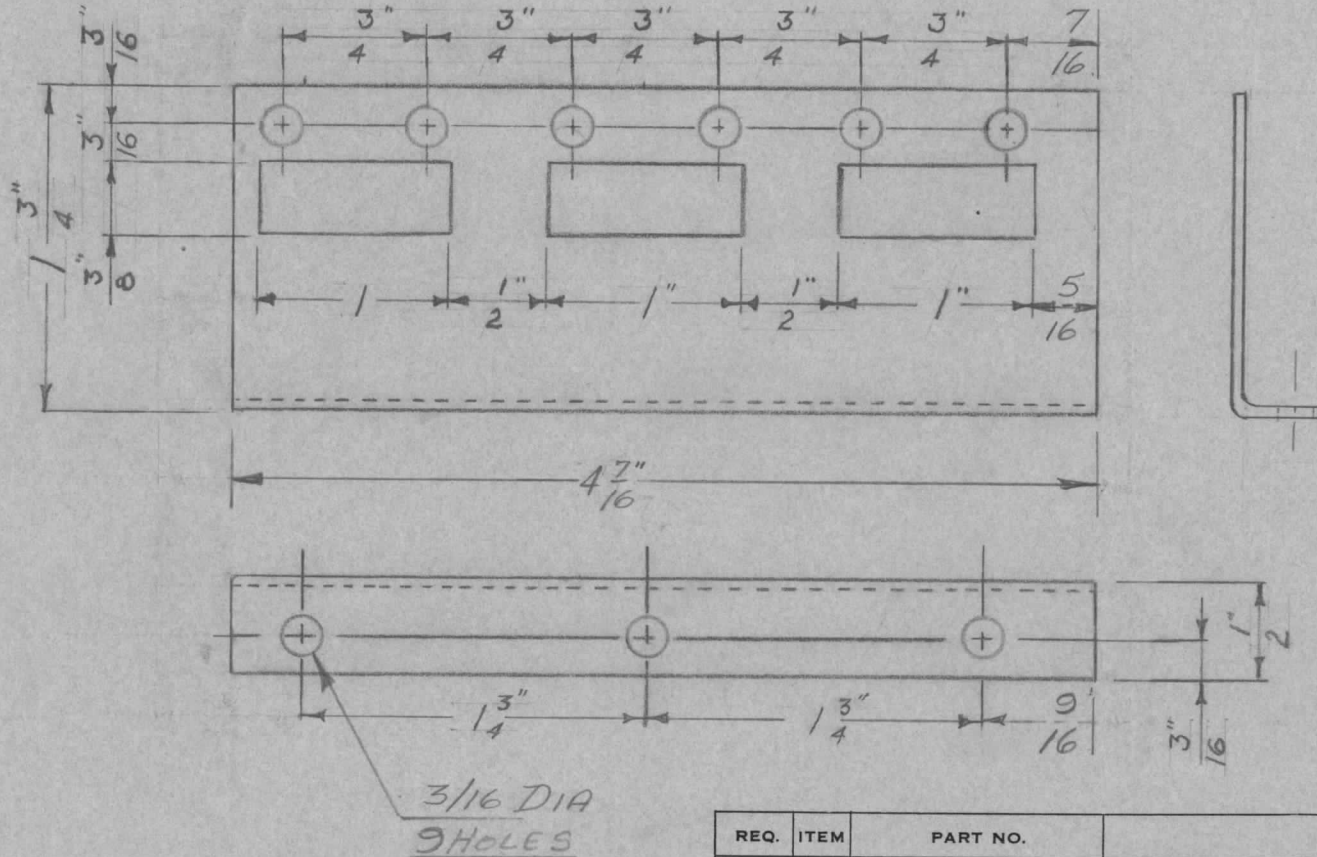
MODEL

PROJECT NO.

ASS'Y. NO.

DATE

A-10065 3-11-55



REQ.	ITEM	PART NO.	DESCRIPTION	SYMBOL
			<b>TMC</b> (Canada) <b>LIMITED</b>	
			<b>OTTAWA ONTARIO</b>	
STOCK SIZE			<b>BRACKET RELAY</b>	
MATERIAL			<b>TRMTR: RF-SWITCHING UNIT</b>	
WEIGHT PER PC.			<b>M.A.C.</b>	
TYPE & TEMPER				
HEAT TREAT. SPEC.				
FINISH & SPEC. NO.			<b>MS-10132</b>	

ISSUE	ITEM	CHANGED FROM	DATE	CN. NO.	DRAFTS	CHECKER	ENG. APP.
TOLERANCES		SCALE			DRILL, PUNCH, COMMERCIAL STOCK SIZES AND MANUFACTURERS TOLERANCES ARE NOT INCLUDED.		
ALL OTHERS	DEC. DIM. $\pm \frac{1}{64}$						
	FRAC. DIM. $\pm \frac{1}{64}$						
	ANGULAR DIM. $\pm$						

IF IT IS FOUND DESIRABLE TO CHANGE ANY TOLERANCE OR OTHER DETAIL SPECIFIED ON THIS DRAWING NOTIFY THE PURCHASER PROMPTLY.

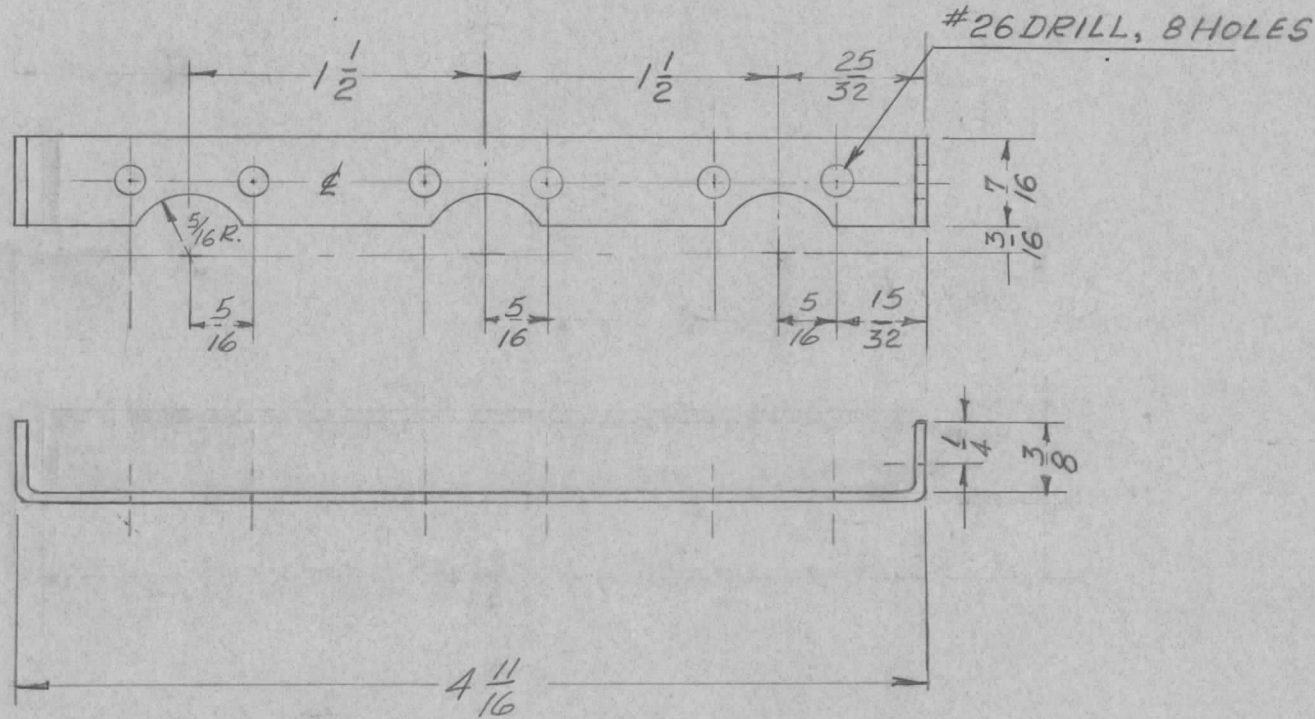
MAXIMUM ALLOWABLE TOLERANCES HAVE BEEN DETERMINED AND DEVIATIONS WILL BE CAUSE FOR REJECTION. REMOVE ALL BURRS AND SHARP EDGES

MS-10133

USED ON

MODEL	PROJECT NO.	ASS'Y. NO.	DATE
-------	-------------	------------	------

A-10065 3-II-55



REQ.	ITEM	PART NO.	DESCRIPTION	SYMBOL
			<b>TMC (Canada) LIMITED</b> OTTAWA ONTARIO	
STOCK SIZE			<i>BRACKET (RELAY SUPPORT)</i>	
.064 ALUMINUM				
MATERIAL		WEIGHT PER PC.	<i>TRMTR. RF SWITCHING UNIT</i>	
57 S 1/4 HARD				
TYPE & TEMPER			<i>L. MARION</i>	
HEAT TREAT. SPEC.			<i>Waa</i>	
FINISH & SPEC. NO.			<i>MS-10133</i>	

ISSUE	ITEM	CHANGED FROM	DATE	CN. NO.	DRAFTS	CHECKER	ENG. APP.
TOLERANCES			SCALE				
ALL OTHERS			DRILL, PUNCH, COMMERCIAL STOCK SIZES AND MANUFACTURERS TOLERANCES ARE NOT INCLUDED.				

IF IT IS FOUND DESIRABLE TO CHANGE ANY TOLERANCE OR OTHER DETAIL SPECIFIED ON THIS DRAWING NOTIFY THE PURCHASER PROMPTLY.

MS-10134

MAXIMUM ALLOWABLE TOLERANCES HAVE BEEN DETERMINED AND DEVIATIONS WILL BE CAUSE FOR REJECTION. REMOVE ALL BURRS AND SHARP EDGES

USED ON

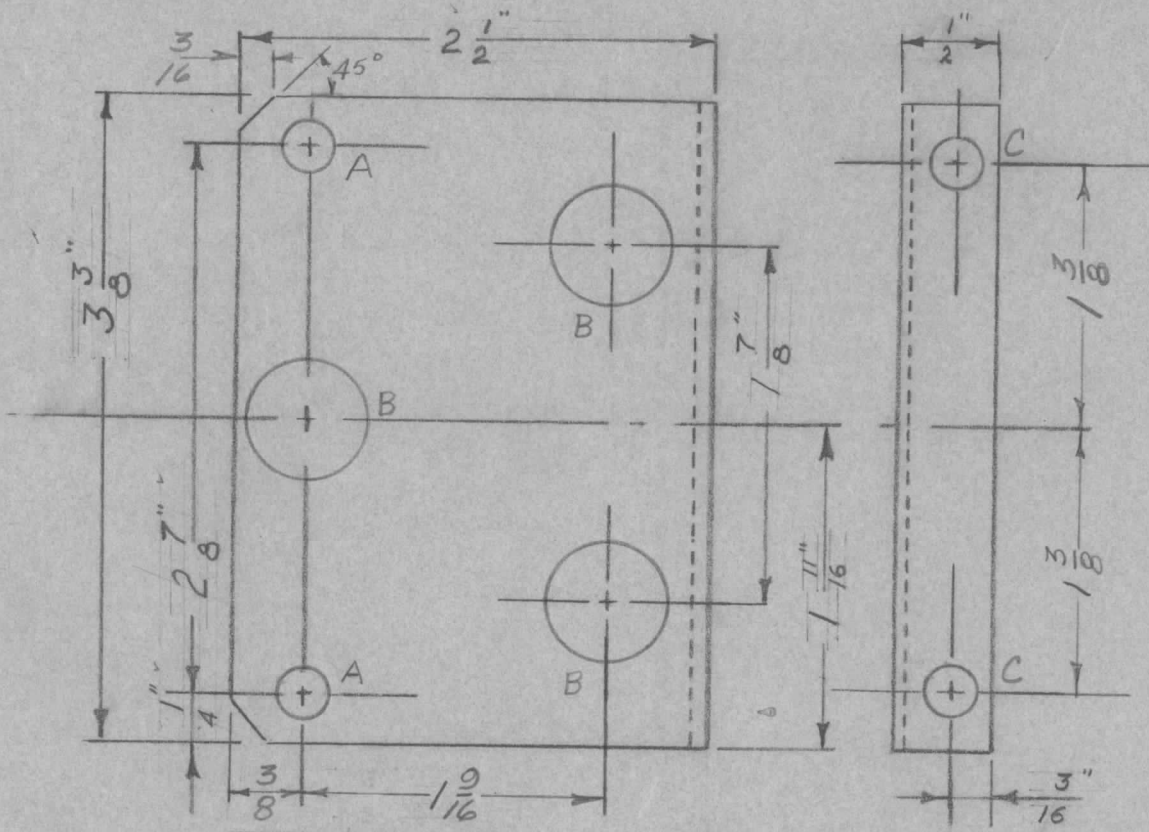
MODEL

PROJECT NO.

ASS'Y. NO.

DATE

A-10066 3-11-55



A-2 HOLES  $\frac{3}{16}$  DIA.  
 B-3 HOLES  $\frac{5}{8}$  DIA.  
 C-2 HOLES  $\frac{9}{16}$  DIA.

REQ.	ITEM	PART NO.	DESCRIPTION	SYMBOL
			<b>TMC (Canada) LIMITED</b> OTTAWA ONTARIO	
STOCK SIZE			<i>BRACKET (SELECTOR MTG.)</i>	
MATERIAL		WEIGHT PER PC.	<i>TRMTR. RF- SWITCHING UNIT</i>	
<i>.064 ALUMINUM</i>				
TYPE & TEMPER			<i>M.A.C.</i>	
<i>57S 1/2 HARD</i>				
HEAT TREAT. SPEC.			<i>Waa</i>	
<i>TMC-5101 &amp; 5107</i>			FINAL APPROVAL	
FINISH & SPEC. NO.			<b>MS-10134</b>	

ISSUE	ITEM	CHANGED FROM	DATE	CN. NO.	DRAFTS	CHECKER	ENG. APP.
TOLERANCES							
ALL OTHERS		DEC. DIM. $\pm \frac{1}{64}$		FRAC. DIM. $\pm \frac{1}{64}$		ANGULAR DIM. $\pm$	
SCALE				DRILL, PUNCH, COMMERCIAL STOCK SIZES AND MANUFACTURERS TOLERANCES ARE NOT INCLUDED.			



IF IT IS FOUND DESIRABLE TO CHANGE ANY TOLERANCE OR OTHER DETAIL SPECIFIED ON THIS DRAWING NOTIFY THE PURCHASER PROMPTLY.

MS-10135

MAXIMUM ALLOWABLE TOLERANCES HAVE BEEN DETERMINED AND DEVIATIONS WILL BE CAUSE FOR REJECTION.  
REMOVE ALL BURRS AND SHARP EDGES

USED ON

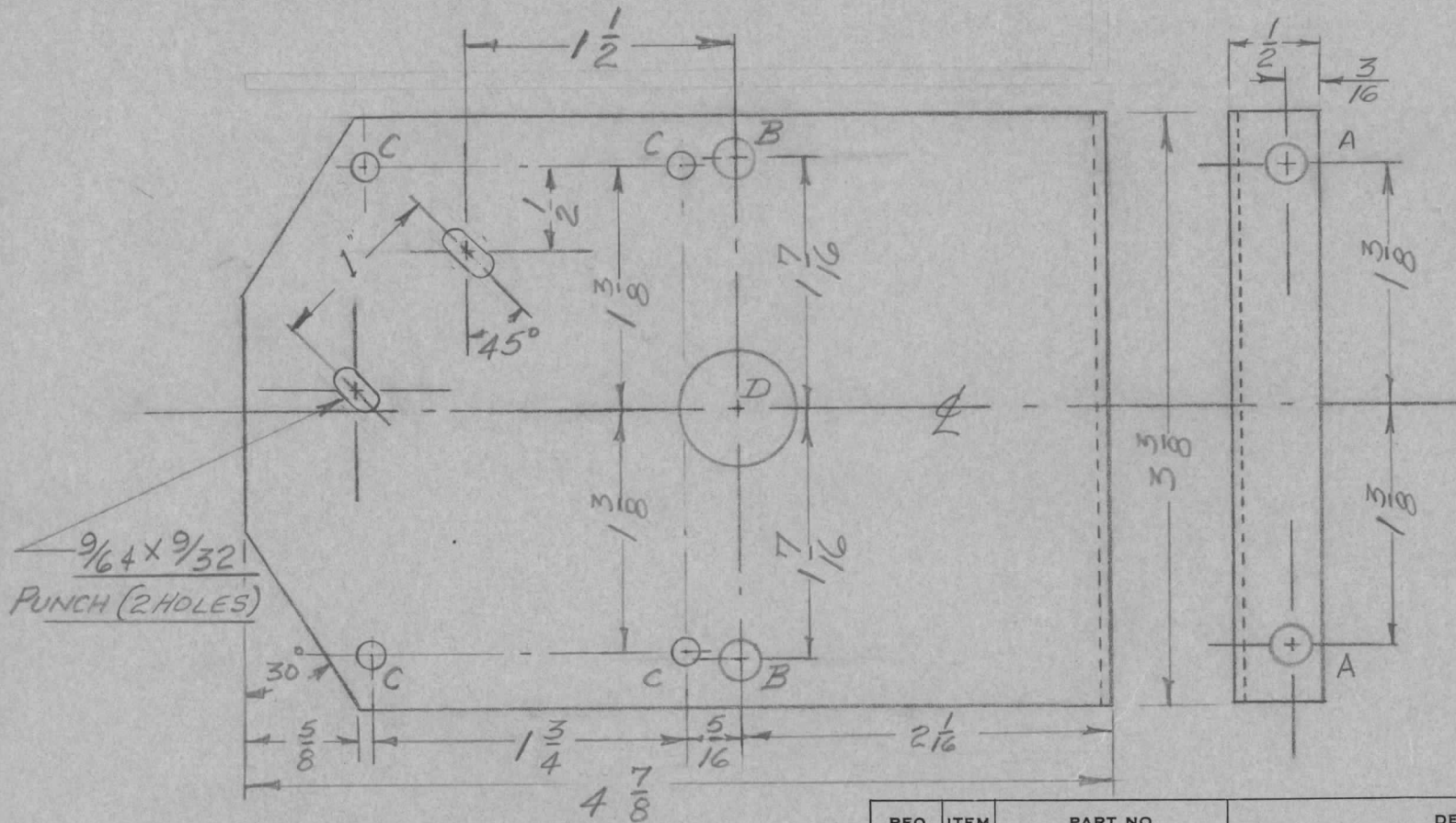
MODEL

PROJECT NO.

ASS'Y. NO.

DATE

A-10066 2-11-55



A - 2 HOLES  $\frac{9}{64}$  DIA.  
B - 2 HOLES  $\frac{3}{16}$  DIA.  
C - 4 HOLES  $\frac{1}{8}$  DIA.  
D - 1 HOLE  $\frac{5}{8}$  DIA.

REQ.	ITEM	PART NO.	DESCRIPTION	SYMBOL
			<b>TMC (Canada) LIMITED</b> OTTAWA ONTARIO	
			BRACKET SELECTOR MOUNTING	
			TRMTR.-RF-SWITCHING UNIT	
			M.A.C.	
			DRAWN	ELEC. DES. APP. MECH. DES. APP.
				Final Approval
			HEAT TREAT. SPEC.	
			FINISH & SPEC. NO.	

ISSUE	ITEM	CHANGED FROM	DATE	CN. NO.	DRAFTS	CHECKER	ENG. APP.
TOLERANCES			SCALE				
ALL OTHERS	DEC. DIM. $\pm$	FRAC. DIM. $\pm$	DRILL, PUNCH, COMMERCIAL STOCK SIZES AND MANUFACTURERS TOLERANCES ARE NOT INCLUDED.				

MS-10135

IF IT IS FOUND DESIRABLE TO CHANGE ANY TOLERANCE OR OTHER DETAIL SPECIFIED ON THIS DRAWING NOTIFY THE PURCHASER PROMPTLY.

MS-10136

MAXIMUM ALLOWABLE TOLERANCES HAVE BEEN DETERMINED AND DEVIATIONS WILL BE CAUSE FOR REJECTION. REMOVE ALL BURRS AND SHARP EDGES

USED ON

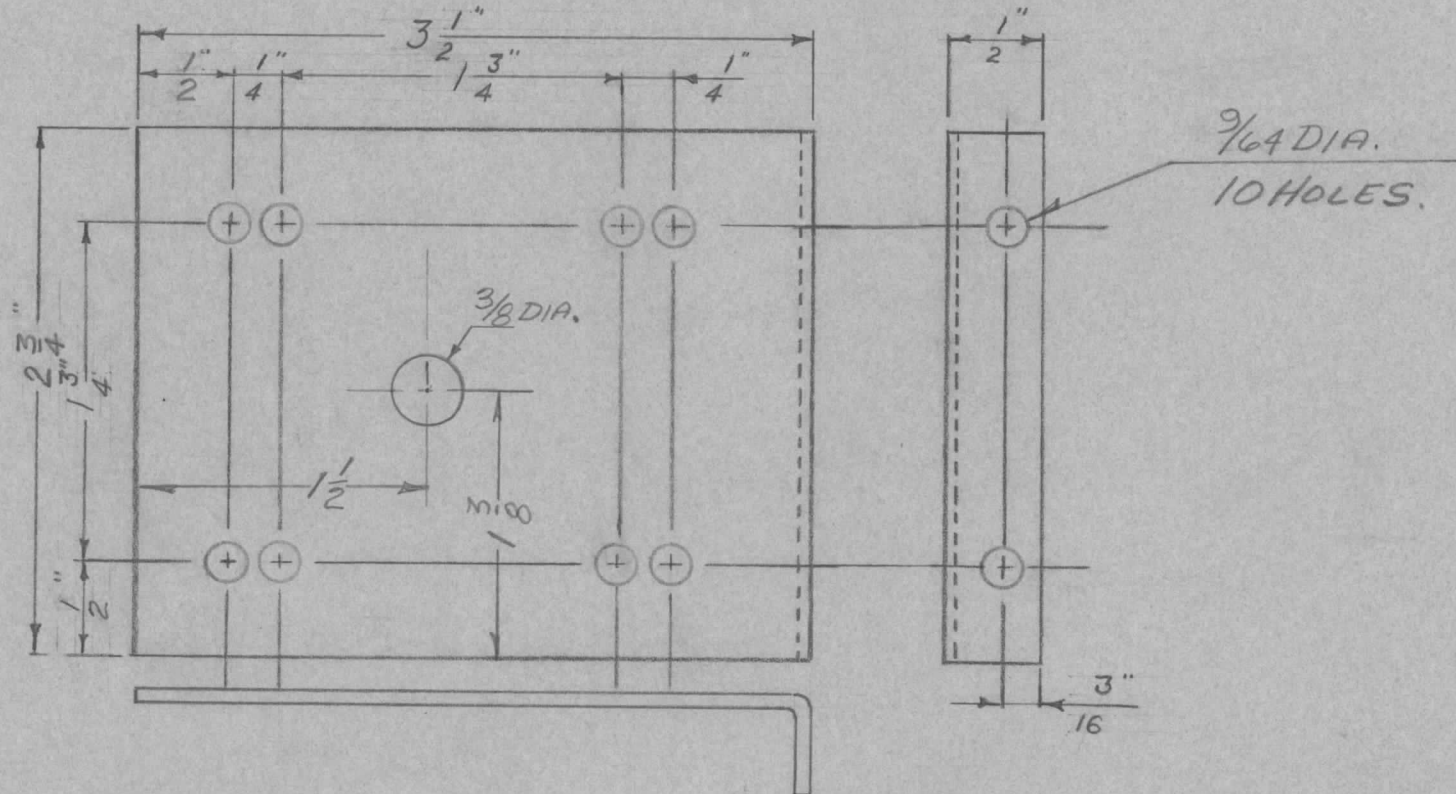
MODEL

PROJECT NO.

ASS'Y. NO.

DATE

A-10068 3-11-55



REQ.	ITEM	PART NO.	DESCRIPTION	SYMBOL
			<b>TMC (Canada) LIMITED</b> OTTAWA ONTARIO	
			BRACKET (RX101)	
			TRMTR.F. SWITCHING UNIT	
			M.A.C.	
			DRAWN	ELEC. DES. APP. MECH. DES. APP.
			CHECKED	FINAL APPROVAL
			HEAT TREAT. SPEC.	
			TMC. 3101 & 3107	
			FINISH & SPEC. NO.	
				MS-10136

ISSUE ITEM CHANGED FROM DATE CN. NO. DRAFTS CHECKER ENG. APP.

TOLERANCES

SCALE

DRILL, PUNCH, COMMERCIAL STOCK SIZES AND MANUFACTURERS TOLERANCES ARE NOT INCLUDED.

ALL OTHERS

DEC. DIM.  $\pm$   
FRAC. DIM.  $\pm \frac{1}{64}$   
ANGULAR DIM.  $\pm$

IF IT IS FOUND DESIRABLE TO CHANGE ANY TOLERANCE OR OTHER DETAIL SPECIFIED ON THIS DRAWING NOTIFY THE PURCHASER PROMPTLY.

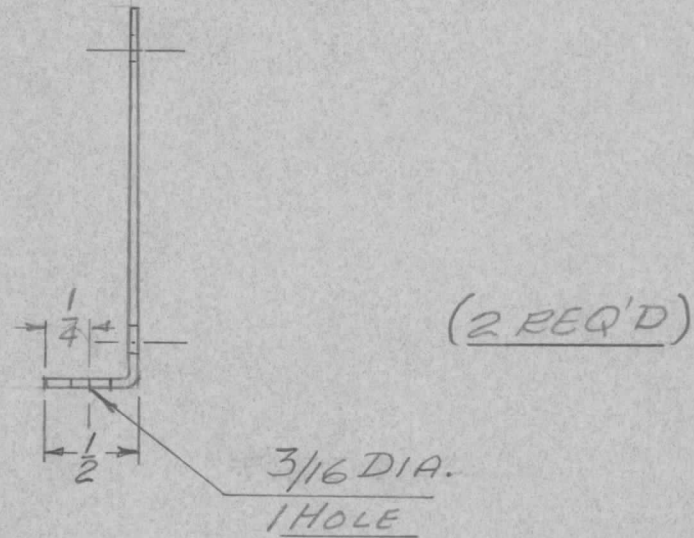
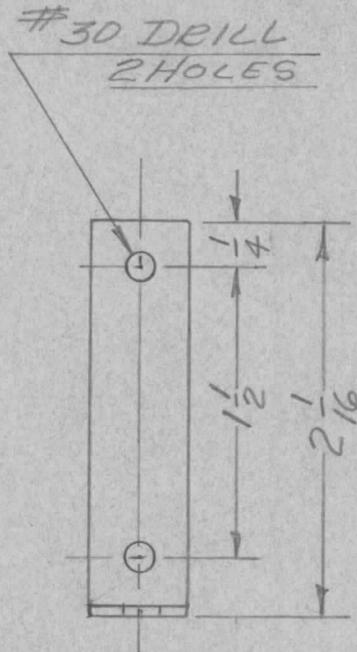
MS-10137

MAXIMUM ALLOWABLE TOLERANCES HAVE BEEN DETERMINED AND DEVIATIONS WILL BE CAUSE FOR REJECTION. REMOVE ALL BURRS AND SHARP EDGES

USED ON

MODEL	PROJECT NO.	ASS'Y. NO.	DATE
-------	-------------	------------	------

A-10045 2-11-55



REQ.	ITEM	PART NO.	DESCRIPTION	SYMBOL
			<b>TMC (Canada) LIMITED</b>	
STOCK SIZE			OTTAWA	ONTARIO
.064 ALUMINUM			BRACKET (RESISTOR MTG PANEL)	
MATERIAL		WEIGHT PER PC.	TEMPER. P.F SWITCHING UNIT	
57 S. 1/4 HARD			L. MARION	
TYPE & TEMPER			DRAWN	ELEC. DES. APP. MECH. DES. APP.
HEAT TREAT. SPEC.			FINAL APPROVAL	
TMC 5101 & 5-107			MS-10137	
FINISH & SPEC. NO.				

ISSUE	ITEM	CHANGED FROM	DATE	CN. NO.	DRAFTS	CHECKER	ENG. APP.
TOLERANCES		SCALE FULL SIZE					
ALL OTHERS	DEC. DIM. ± 1/64	DRILL, PUNCH, COMMERCIAL STOCK SIZES AND MANUFACTURERS TOLERANCES ARE NOT INCLUDED.					
	FRAC. DIM. ± 1/64						
	ANGULAR DIM. ±						



IF IT IS FOUND DESIRABLE TO CHANGE ANY TOLERANCE OR OTHER DETAIL SPECIFIED ON THIS DRAWING NOTIFY THE PURCHASER PROMPTLY.

# STANDARD DRAWING

MS-10138

MAXIMUM ALLOWABLE TOLERANCES HAVE BEEN DETERMINED AND DEVIATIONS WILL BE CAUSE FOR REJECTION. REMOVE ALL BURRS AND SHARP EDGES

USED ON

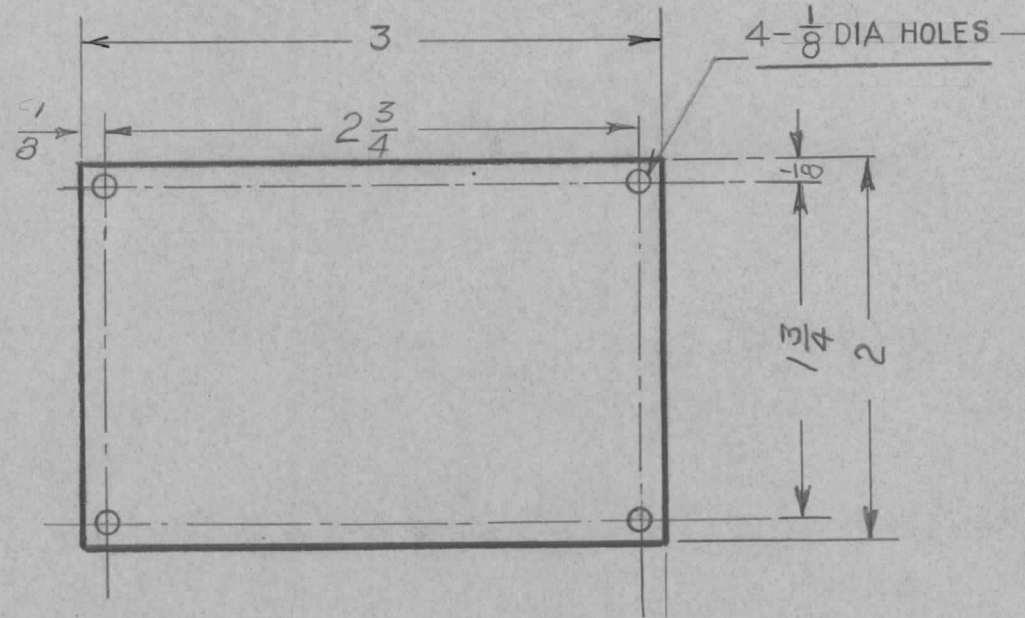
MODEL

PROJECT NO.

ASS'Y. NO.

DATE

RF SWITCH A-10066 2-11-55  
A-10048



FOR ENGRAVING - SEE LD-10013

REQ.	ITEM	PART NO.	DESCRIPTION	SYMBOL
		0-064	<b>TMC (Canada) LIMITED</b>	
		STOCK SIZE	OTTAWA ONTARIO	
		ALUMINUM	INDICATOR PLATE	
		MATERIAL	TRANS. RF SW. INDIC. UNIT	
		57S 1/4 HARD	EW.BG.	
		TYPE & TEMPER		
			DRAWN	ELEC. DES. APP. MECH. DES. APP.
			CHECKED	FINAL APPROVAL
		HEAT TREAT. SPEC.		
		TMC SPECS. S101 & S107		MS-10138
		FINISH & SPEC. NO.		

ISSUE	ITEM	CHANGED FROM	DATE	CN. NO.	DRAFTS	CHECKER	ENG. APP.

TOLERANCES

SCALE

ALL OTHERS

DEC. DIM.  $\pm$   
FRAC. DIM.  $\pm \frac{1}{64}$   
ANGULAR DIM.  $\pm$

DRILL, PUNCH, COMMERCIAL STOCK SIZES AND MANUFACTURERS TOLERANCES ARE NOT INCLUDED.

IF IT IS FOUND DESIRABLE TO CHANGE ANY TOLERANCE OR OTHER DETAIL SPECIFIED ON THIS DRAWING NOTIFY THE PURCHASER PROMPTLY.

MS-10139

MAXIMUM ALLOWABLE TOLERANCES HAVE BEEN DETERMINED AND DEVIATIONS WILL BE CAUSE FOR REJECTION. REMOVE ALL BURRS AND SHARP EDGES

USED ON

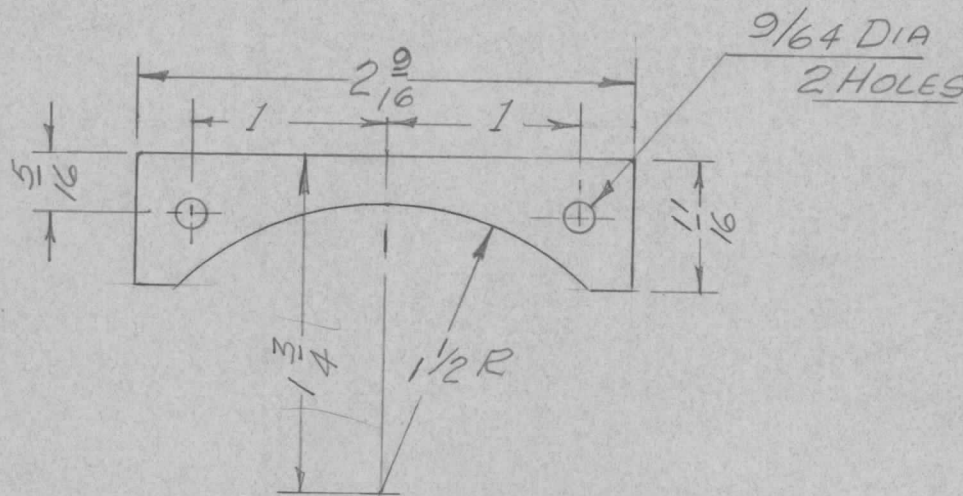
MODEL

PROJECT NO.

ASS'Y. NO.

DATE

A-10067 3-11-55



REQ.	ITEM	PART NO.	DESCRIPTION	SYMBOL
		064	TMC (Canada) LIMITED	
		STOCK SIZE	OTTAWA ONTARIO	
		DEL ALUMINUM	DOOR STOP FOR FRONT PANEL	
		MATERIAL	TRMTR P.F. SWITCHING UNIT	
		575 1/2 HARD	L. MARION	
		TYPE & TEMPER	DRAWN	ELEC. DES. APP. MECH. DES. APP.
		HEAT TREAT. SPEC.	CHECKED	FINAL APPROVAL
		TMC-SPEC-S115		MS-10139
		FINISH & SPEC. NO.		

ISSUE	ITEM	CHANGED FROM	DATE	CN. NO.	DRAFTS	CHECKER	ENG. APP.

TOLERANCES

SCALE

ALL OTHERS  
 DEC. DIM.  $\pm \frac{1}{64}$   
 FRAC. DIM.  $\pm \frac{1}{64}$   
 ANGULAR DIM.  $\pm$

DRILL, PUNCH, COMMERCIAL STOCK  
 SIZES AND MANUFACTURERS  
 TOLERANCES ARE NOT INCLUDED.

IF IT IS FOUND DESIRABLE TO CHANGE ANY TOLERANCE OR OTHER DETAIL SPECIFIED ON THIS DRAWING NOTIFY THE PURCHASER PROMPTLY.

MAXIMUM ALLOWABLE TOLERANCES HAVE BEEN DETERMINED AND DEVIATIONS WILL BE CAUSE FOR REJECTION. REMOVE ALL BURRS AND SHARP EDGES

MS-10140

USED ON

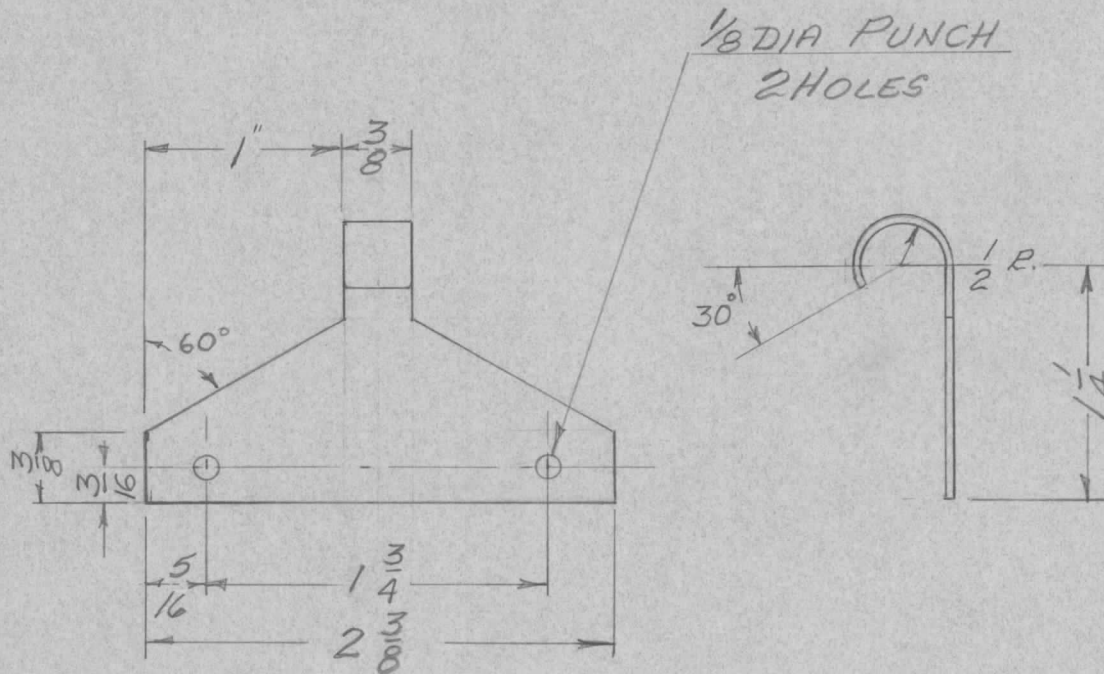
MODEL

PROJECT NO.

ASS'Y. NO.

DATE

A-10067 30/12/55



REQ.	ITEM	PART NO.	DESCRIPTION	SYMBOL
		064	TMC (Canada) LIMITED	
		STOCK SIZE	OTTAWA	ONTARIO
		ALUMINUM	CLIP - BULB EXTRACTOR	
		MATERIAL	TEMPR. PF. SWITCHING UNIT	
		575 1/4 HARD	L. MARION	
		TYPE & TEMPER	DRAWN	ELEC. DES. APP. MECH. DES. APP.
			HEAT TREAT. SPEC.	
			CHECKED	FINAL APPROVAL
			TMC-5101 & S107	
			FINISH & SPEC. NO.	

ISSUE	ITEM	CHANGED FROM	DATE	CN. NO.	DRAFTS	CHECKER	ENG. APP.

TOLERANCES

SCALE FULL SIZE

ALL OTHERS  
DEC. DIM. ±  
FRAC. DIM. ±  
ANGULAR DIM. ±

DRILL, PUNCH, COMMERCIAL STOCK SIZES AND MANUFACTURERS TOLERANCES ARE NOT INCLUDED.

wa  
MS-10140



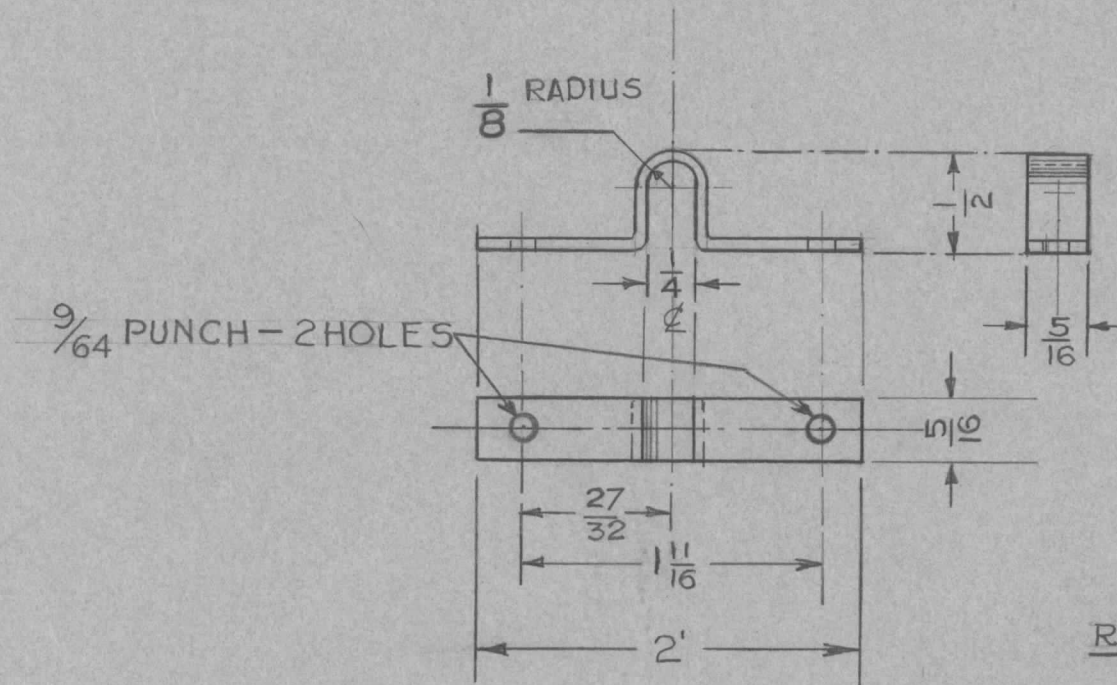
IF IT IS FOUND DESIRABLE TO CHANGE ANY TOLERANCE OR OTHER DETAIL SPECIFIED ON THIS DRAWING NOTIFY THE PURCHASER PROMPTLY.

MAXIMUM ALLOWABLE TOLERANCES HAVE BEEN DETERMINED AND DEVIATIONS WILL BE CAUSE FOR REJECTION. REMOVE ALL BURRS AND SHARP EDGES

MS-10150

USED ON

MODEL	PROJECT NO.	ASS'Y. NO.	DATE
AMC6-2/200B			27-2-56



REQ'D - ONE PER SET

REQ.	ITEM	PART NO.	DESCRIPTION	SYMBOL
			<b>TMC (Canada) LIMITED</b>	
			OTTAWA ONTARIO	
		ALUM, 062	BRACKET - INPUT CABLE	
			AMC6 - 2/200B	
			E.W.B.G.	
			DRAWN	ELEC. DES. APP. MECH. DES. APP.
			CHECKED	FINAL APPROVAL
		TMC-SPECS-S101 & S107		MS-10150

ISSUE	ITEM	CHANGED FROM	DATE	CN. NO.	DRAFTS	CHECKER	ENG. APP.
TOLERANCES			SCALE				
ALL OTHERS	DEC. DIM. $\pm$	FRAC. DIM. $\pm \frac{1}{64}$	DRILL, PUNCH, COMMERCIAL STOCK SIZES AND MANUFACTURERS TOLERANCES ARE NOT INCLUDED.				
	ANGULAR DIM. $\pm$						

IF IT IS FOUND DESIRABLE TO CHANGE ANY TOLERANCE OR OTHER DETAIL SPECIFIED ON THIS DRAWING NOTIFY THE PURCHASER PROMPTLY.

MAXIMUM ALLOWABLE TOLERANCES HAVE BEEN DETERMINED AND DEVIATIONS WILL BE CAUSE FOR REJECTION. REMOVE ALL BURRS AND SHARP EDGES

MS-10151

USED ON

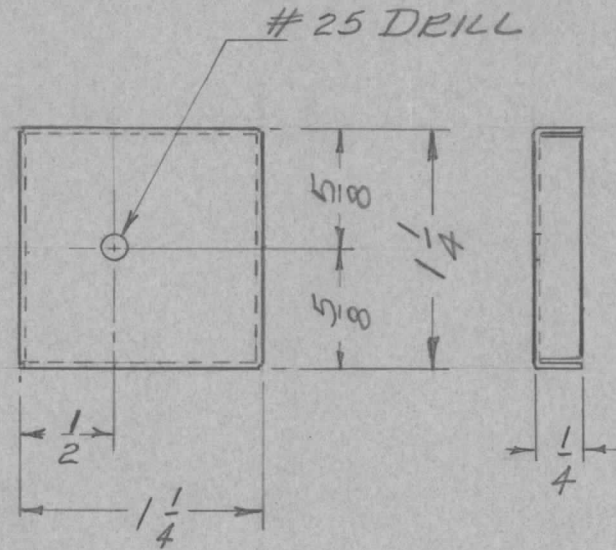
MODEL

PROJECT NO.

ASS'Y. NO.

DATE

A-10091 3/28/56



NOTICE TO PERSONS RECEIVING THIS DRAWING

THE TECHNICAL MATERIEL CORPORATION claims proprietary right in the material disclosed hereon. This drawing is issued in confidence for engineering information only and may not be reproduced or used to manufacture anything shown hereon without permission from THE TECHNICAL MATERIEL CORPORATION to the user. This drawing is loaned for mutual assistance and is subject to recall at any time.

Property of:

THE TECHNICAL MATERIEL CORPORATION  
MAMARONECK, NEW YORK

REQ.	ITEM	PART NO.	DESCRIPTION	SYMBOL
		.019 - .025	TMC (Canada) LIMITED OTTAWA ONTARIO	
		STOCK SIZE		
		STEEL	TERMINAL LID FOR TRD 70	
		MATERIAL	WEIGHT PER PC.	
		TYPE & TEMPER	L. MARION	
			DRAWN	ELEC. DES. APP. MECH. DES. APP.
		HEAT TREAT. SPEC.	CHECKED	FINAL APPROVAL
		ELECTRO TINNED		MS-10151
		FINISH & SPEC. NO.		

ISSUE	ITEM	CHANGED FROM	DATE	CN. NO.	DRAFTS	CHECKER	ENG. APP.
TOLERANCES			SCALE FULL SIZE				
ALL OTHERS	DEC. DIM. ±	FRAC. DIM. ± 1/64	DRILL, PUNCH, COMMERCIAL STOCK SIZES AND MANUFACTURERS TOLERANCES ARE NOT INCLUDED.				
	ANGULAR DIM. ±						

IF IT IS FOUND DESIRABLE TO CHANGE ANY TOLERANCE OR OTHER DETAIL SPECIFIED ON THIS DRAWING NOTIFY THE PURCHASER PROMPTLY.

MAXIMUM ALLOWABLE TOLERANCES HAVE BEEN DETERMINED AND DEVIATIONS WILL BE CAUSE FOR REJECTION. REMOVE ALL BURRS AND SHARP EDGES

MS-10153

USED ON

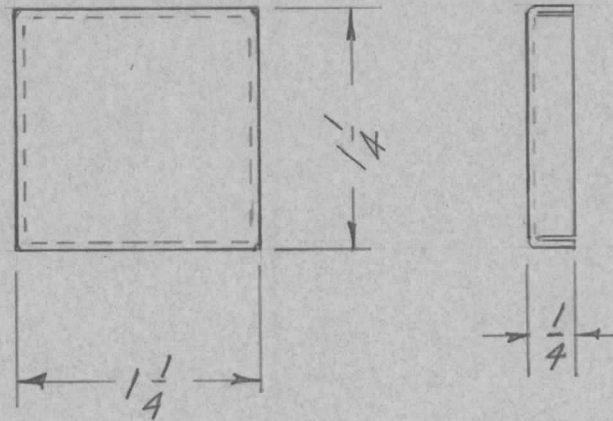
MODEL

PROJECT NO.

ASS'Y. NO.

DATE

A-10073 3/28/56



NOTICE TO PERSONS RECEIVING THIS DRAWING

THE TECHNICAL MATERIEL CORPORATION claims proprietary right in the material disclosed hereon. This drawing is issued in confidence for engineering information only and may not be reproduced or used to manufacture anything shown hereon without permission from THE TECHNICAL MATERIEL CORPORATION to the user. This drawing is loaned for mutual assistance and is subject to recall at any time.

Property of:

THE TECHNICAL MATERIEL CORPORATION  
MAMARONECK, NEW YORK

REQ.	ITEM	PART NO.	DESCRIPTION	SYMBOL
		.019 - .025	TMC (Canada) LIMITED OTTAWA ONTARIO	
		STOCK SIZE		
		STEEL	TRANSFORMER COVER TRO70	
		MATERIAL		
		WEIGHT PER PC.		
		TYPE & TEMPER	L MARION	
			DRAWN	ELEC. DES. APP. <i>[Signature]</i> MECH. DES. APP.
		HEAT TREAT. SPEC.	CHECKED	FINAL APPROVAL
		ELECTRO TINNED		MS-10153
		FINISH & SPEC. NO.		

ISSUE	ITEM	CHANGED FROM	DATE	CN. NO.	DRAFTS	CHECKER	ENG. APP.
TOLERANCES			SCALE FULL SIZE				
ALL OTHERS	DEC. DIM. ±	FRAC. DIM. ± 1/64	DRILL, PUNCH, COMMERCIAL STOCK SIZES AND MANUFACTURERS TOLERANCES ARE NOT INCLUDED.				
	ANGULAR DIM. ±						



IF IT IS FOUND DESIRABLE TO CHANGE ANY TOLERANCE OR OTHER DETAIL SPECIFIED ON THIS DRAWING NOTIFY THE PURCHASER PROMPTLY.

MS-10159

MAXIMUM ALLOWABLE TOLERANCES HAVE BEEN DETERMINED AND DEVIATIONS WILL BE CAUSE FOR REJECTION. REMOVE ALL BURRS AND SHARP EDGES

USED ON

MODEL

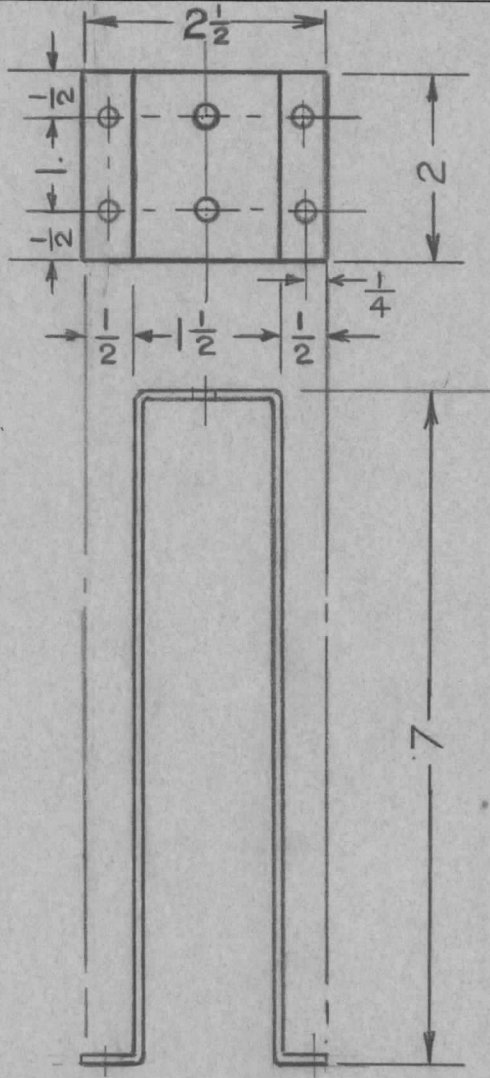
PROJECT NO.

ASS'Y. NO.

DATE

8548

MAY 2.56



6 HOLES TO CLEAR 6-32 MS.

NOTICE TO PERSONS RECEIVING THIS DRAWING

THE TECHNICAL MATERIEL CORPORATION claims proprietary right in the material disclosed hereon. This drawing is issued in confidence for engineering information only and may not be reproduced or used to manufacture anything shown hereon without permission from THE TECHNICAL MATERIEL CORPORATION to the user. This drawing is loaned for mutual assistance and is subject to recall at any time.

Property of:

THE TECHNICAL MATERIEL CORPORATION  
MAMARONECK, NEW YORK

REQ.	ITEM	PART NO.	DESCRIPTION	SYMBOL
		•064 SHEET	TMC (Canada) LIMITED OTTAWA ONTARIO	
		STOCK SIZE		
		ALUMINUM	BRACKET-DUCT SUPPORT	
		MATERIAL	WEIGHT PER PC.	
		ALCAN 57S-1/4 HARD		
		TYPE & TEMPER	EW B.G.	<i>Ad</i>
			DRAWN	ELEC. DES. APP. MECH. DES. APP.
				<i>Waa</i>
		HEAT TREAT. SPEC.	CHECKED	FINAL APPROVAL
		TMC- S101 & S107		MS-10159
		FINISH & SPEC. NO.		

ISSUE	ITEM	CHANGED FROM	DATE	CN. NO.	DRAFTS	CHECKER	ENG. APP.
TOLERANCES		SCALE		HALF SIZE			
ALL OTHERS	DEC. DIM. ±	FRAC. DIM. ±	ANGULAR DIM. ±	DRILL, PUNCH, COMMERCIAL STOCK SIZES AND MANUFACTURERS TOLERANCES ARE NOT INCLUDED.			

IF IT IS FOUND DESIRABLE TO CHANGE ANY TOLERANCE OR OTHER DETAIL SPECIFIED ON THIS DRAWING NOTIFY THE PURCHASER PROMPTLY.

MAXIMUM ALLOWABLE TOLERANCES HAVE BEEN DETERMINED AND DEVIATIONS WILL BE CAUSE FOR REJECTION. REMOVE ALL BURRS AND SHARP EDGES

MS-10166

USED ON

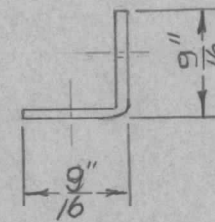
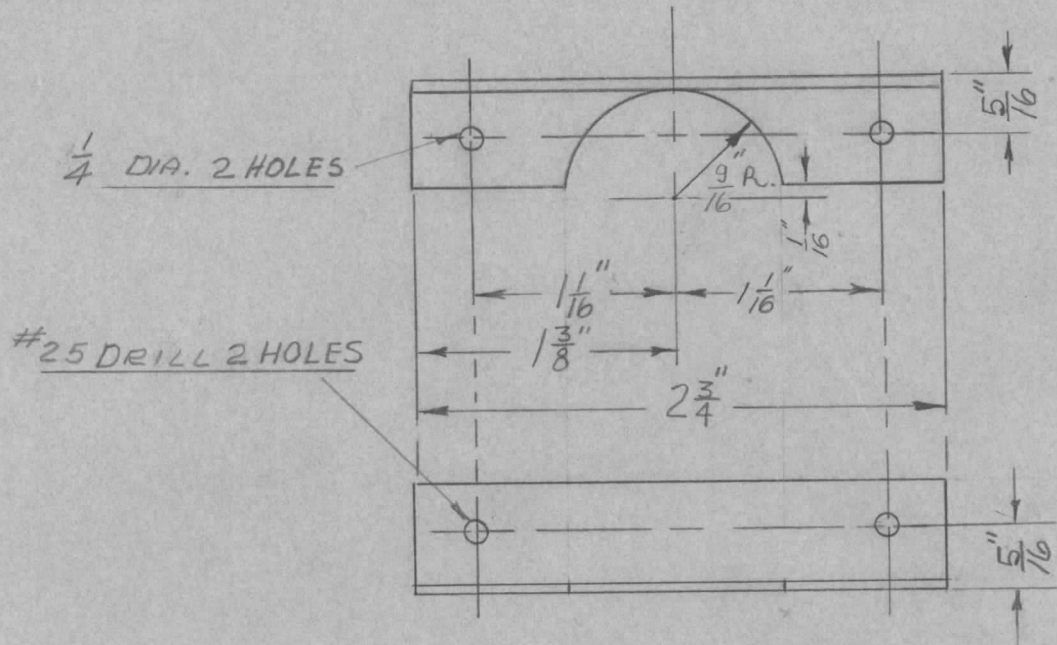
MODEL	PROJECT NO.	ASS'Y. NO.	DATE
EQ-1	8548	A10165	2/4/57.

NOTICE TO PERSONS RECEIVING THIS DRAWING

THE TECHNICAL MATERIEL CORPORATION claims proprietary right in the material disclosed hereon. This drawing is issued in confidence for engineering information only and may not be reproduced or used to manufacture anything shown hereon without permission from THE TECHNICAL MATERIEL CORPORATION to the user. This drawing is loaned for mutual assistance and is subject to recall at any time.

Property of:

THE TECHNICAL MATERIEL CORPORATION  
MAMARONECK, NEW YORK



2 REQ'D PER UNIT

FOR VANCOUVER SITE

REQ.	ITEM	PART NO.	DESCRIPTION	SYMBOL
		$\frac{1}{16} \times 1 \times 2 \frac{3}{4}$	TMC (Canada) LIMITED OTTAWA ONTARIO	
		STOCK SIZE		
		ALUMINIUM	COVER SUPPORT FOR	
		MATERIAL	LINE EQUALIZER	
		65ST 1/4 HARD	G SIM	
		TYPE & TEMPER	DRAWN	ELEC. DES. APP.
			L. MARION	M. J. [Signature]
		HEAT TREAT. SPEC.	CHECKED	FINAL APPROVAL
		AS 15		MS-10166
		FINISH & SPEC. NO.		

ISSUE	ITEM	CHANGED FROM	DATE	CN. NO.	DRAFTS	CHECKER	ENG. APP.
TOLERANCES			SCALE FULL SIZE				
ALL OTHERS	DEC. DIM. $\pm$ FRAC. DIM. $\pm$ ANGULAR DIM. $\pm$	DRILL, PUNCH, COMMERCIAL STOCK SIZES AND MANUFACTURERS TOLERANCES ARE NOT INCLUDED.					

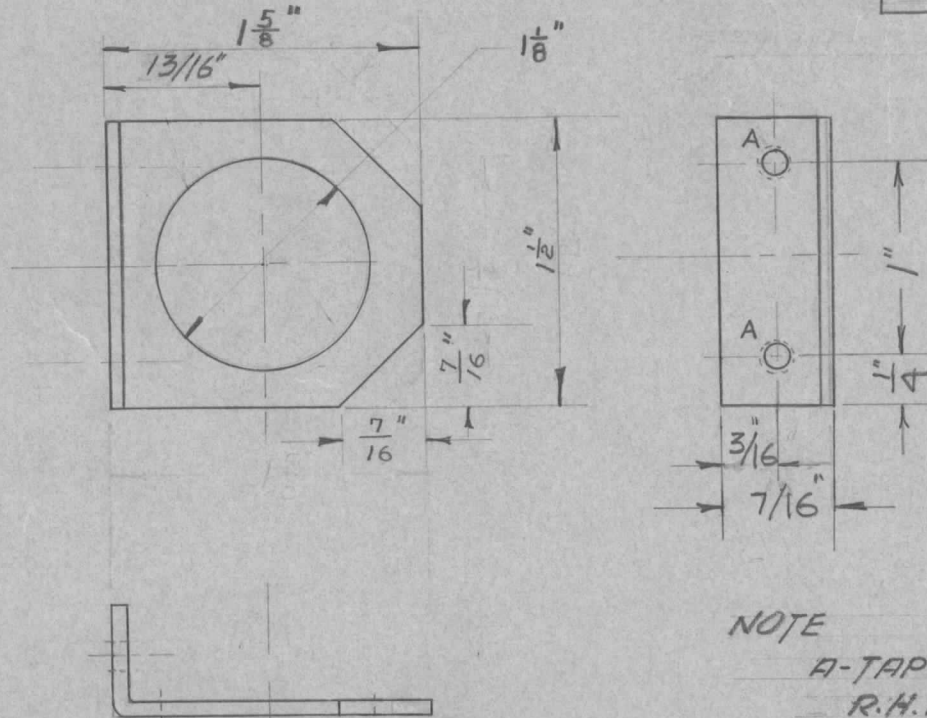
IF IT IS FOUND DESIRABLE TO CHANGE ANY TOLERANCE OR OTHER DETAIL SPECIFIED ON THIS DRAWING NOTIFY THE PURCHASER PROMPTLY.

M510182

MAXIMUM ALLOWABLE TOLERANCES HAVE BEEN DETERMINED AND DEVIATIONS WILL BE CAUSE FOR REJECTION. REMOVE ALL BURRS AND SHARP EDGES

USED ON

MODEL	PROJECT NO.	ASS'Y. NO.	DATE
B.A.F.-1	CE-8503	A-10103-A	30-7-57



NOTE

A-TAP DRILL #36 FOR 1/8-32-NC-2A  
R.H. MACH. SCREW 1/4" LG

8

REQ.	ITEM	PART NO.	DESCRIPTION	SYMBOL
			<b>TMC (Canada) LIMITED</b> OTTAWA ONTARIO	
		STOCK SIZE		
		1/16 ALUMINUM	BRACKET FOR CONDENSER	
		MATERIAL	WEIGHT PER PC.	
			C4	
		TYPE & TEMPER	<i>m. Johnson</i>	
		NATURAL	DRAWN	ELEC. DES. APP. MECH. DES. APP.
		HEAT TREAT. SPEC.	<i>M. Furko</i>	
		DEGREASED, ETCHED & LACQUERED	CHECKED	FINAL APPROVAL
		FINISH & SPEC. NO.		MS-10182

ISSUE	ITEM	CHANGED FROM	DATE	CN. NO.	DRAFTS	CHECKER	ENG. APP.

TOLERANCES

SCALE *FULL SIZE*

ALL OTHERS  
DEC. DIM. ±  
FRAC. DIM. ±  
ANGULAR DIM. ±

DRILL, PUNCH, COMMERCIAL STOCK SIZES AND MANUFACTURERS TOLERANCES ARE NOT INCLUDED.